

USH 41: USH 10 TO STH 114 (WINNEBAGO COUNTY) NIGHTTIME 2 LANE CLOSURE NO DIVERSION ROUTE (MAX QUEUE METHOD)	OCTOBER
	Analyzed for 2009 Construction Season

SUMMARY OF TRAFFIC MODEL OUTPUT

MON-THUR SOUTHBOUND DIRECTION

TIME OF DAY	FLOWS AND CAPACITY IN VEH/HR						AVERAGE SPEEDS IN MPH				
	MAIN ROUTE		SITE CAPA CITY	FLOW		AV.DEL PER VEH (MINS)	AVERAGE QUEUE (VEH)	MAIN ROUTE		SITE	
	DEMAND FLOW	PCT HEAVY		MAIN ROUTE	'DIVER TED'			WITHOUT WORK ZONE	WITH WORK ZONE		
MID-1 AM	295	0.0	1500	295	0	0.51	0	70.2	58.9	44.3	
1-2 AM	204	0.0	1500	204	0	0.50	0	70.2	59.1	44.6	
2-3 AM	215	0.0	1500	215	0	0.50	0	70.2	59.1	44.6	
3-4 AM	286	0.0	1500	286	0	0.51	0	70.2	58.9	44.3	
4-5 AM	557	0.0	1500	557	0	0.54	0	70.0	58.2	43.3	
5-6 AM	1358	0.0	OFF	1358	0	0.00	0	69.1	69.1	69.1	
6-7 AM	2747	0.0	OFF	2747	0	0.00	0	67.3	67.3	67.3	
7-8 AM	4058	0.0	OFF	4058	0	0.00	0	63.2	63.2	63.2	
8-9 AM	2983	0.0	OFF	2983	0	0.00	0	67.0	67.0	67.0	
9-10 AM	2424	0.0	OFF	2424	0	0.00	0	67.8	67.8	67.8	
10-11 AM	2336	0.0	OFF	2336	0	0.00	0	67.8	67.8	67.8	
11AM-NOON	2448	0.0	OFF	2448	0	0.00	0	67.7	67.7	67.7	
NOON-1PM	2489	0.0	OFF	2489	0	0.00	0	67.6	67.6	67.6	
1-2 PM	2707	0.0	OFF	2707	0	0.00	0	67.4	67.4	67.4	
2-3 PM	3111	0.0	OFF	3111	0	0.00	0	66.9	66.9	66.9	
3-4 PM	3366	0.0	OFF	3366	0	0.00	0	66.6	66.6	66.6	
4-5 PM	3951	0.0	OFF	3951	0	0.00	0	63.8	63.8	63.8	
5-6 PM	3595	0.0	OFF	3595	0	0.00	0	66.3	66.3	66.3	
6-7 PM	2203	0.0	OFF	2203	0	0.00	0	68.0	68.0	68.0	
7-8 PM	1560	0.0	1499	1560	0	3.07	53	68.8	32.2	30.8	
8-9 PM	1456	0.0	1500	1456	0	2.86	47	68.9	33.5	31.1	
9-10 PM	1235	0.0	1500	1235	0	0.77	0	69.2	53.8	37.4	
10-11 PM	881	0.0	1500	881	0	0.57	0	69.6	57.3	42.1	
11PM-MID	513	0.0	1500	513	0	0.53	0	70.1	58.3	43.5	

"OFF" INDICATES NO ROAD WORK (ALL LANES OPEN TO TRAFFIC)

----- SITE BREAKDOWN DELAYS -----	
BREAKDOWN DURATION (MINS)	0
RANGE OF QUEUE DELAY - MIN (VEH-H) MAX	0.0
AV BREAKDOWNS PER DAY	0.00
AV QUEUE DELAY/DAY (VEH-H)	0.0
AV TOTAL DELAY/DAY (VEH-H)	0.0

----- SITE ACCIDENT DELAYS -----	
BREAKDOWN DURATION (MINS)	0
RANGE OF QUEUE DELAY - MIN (VEH-H) MAX	0
AV BREAKDOWNS PER DAY	0
AV QUEUE DELAY/DAY (VEH-H)	0
AV TOTAL DELAY/DAY (VEH-H)	0

AVERAGE ACCIDENT NUMBERS (PIA/DAY)	
MAIN ROUTE WITHOUT WORKS	0.0232
MAIN ROUTE WITH WORKS	0.0227
'DIVERSION'	0.0000
<small>PIA: Personal Injury Accidents</small>	
IMPACTS ON ROAD USERS	
ROAD USER COSTS PER DAY	\$2,512
CONGESTED HOURS PER DAY*	0

*Delays Exceeding User-Specified Maximum

**USH 41: USH 10 TO STH 114 (WINNEBAGO COUNTY)
NIGHTTIME 2 LANE CLOSURE
NO DIVERSION ROUTE (MAX QUEUE METHOD)**

OCTOBER

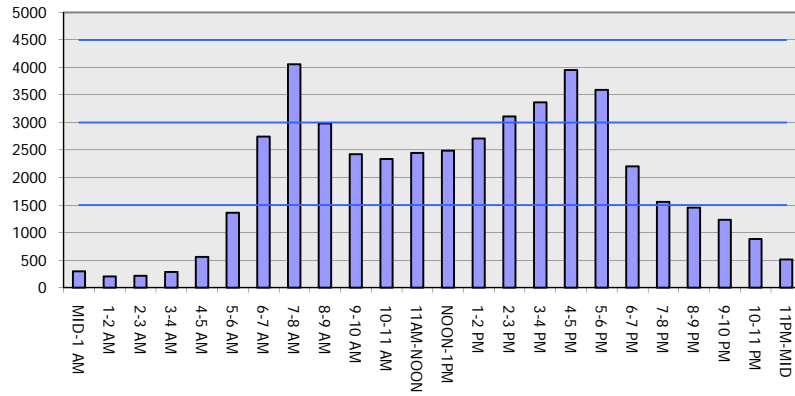
Analyzed for 2009
Construction Season

GRAPHICAL REPRESENTATION OF TRAFFIC MODEL INPUT AND OUTPUT

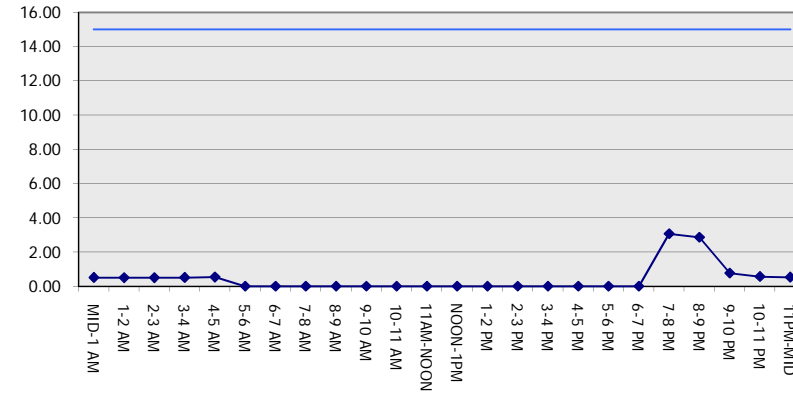
MON-THUR

SOUTHBOUND DIRECTION

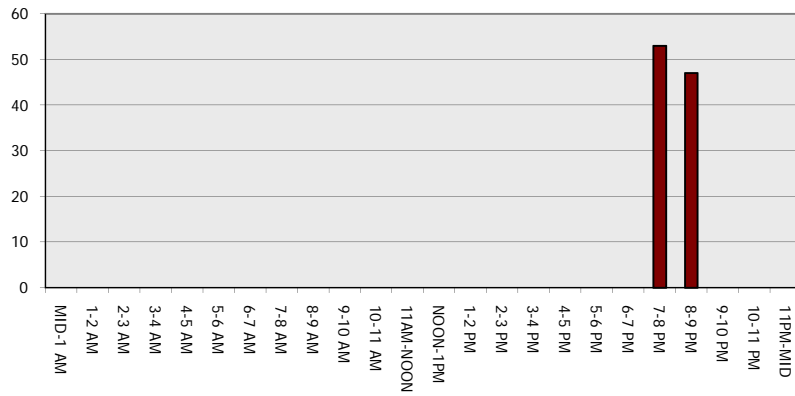
Main Route - Traffic Demand (Vehicles Per Hour)



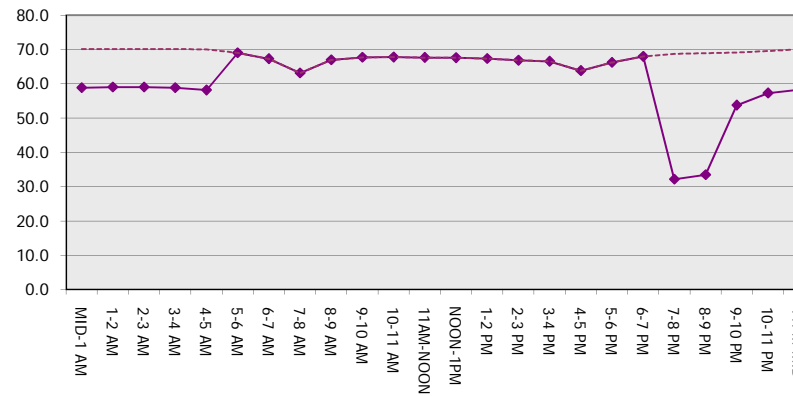
Main Route Average Delay Per Vehicle (Minutes)



Main Route - Average Queue Length (Vehicles)



Main Route - Average Speed (MPH)



USH 41: USH 10 TO STH 114 (WINNEBAGO COUNTY) NIGHTTIME 2 LANE CLOSURE NO DIVERSION ROUTE (MAX QUEUE METHOD)	OCTOBER
	Analyzed for 2009 Construction Season

SUMMARY OF TRAFFIC MODEL OUTPUT

MON-THUR NORTHBOUND DIRECTION

TIME OF DAY	FLOWS AND CAPACITY IN VEH/HR							AVERAGE SPEEDS IN MPH		
	MAIN ROUTE		SITE CAPA CITY	FLOW		AV.DEL PER VEH (MINS)	AVERAGE QUEUE (VEH)	MAIN ROUTE		SITE
	DEMAND FLOW	PCT HEAVY		MAIN ROUTE	'DIVER TED'			WITHOUT WORK ZONE	WITH WORK ZONE	
MID-1 AM	295	0.0	1500	295	0	0.51	0	70.2	58.9	44.3
1-2 AM	215	0.0	1500	215	0	0.50	0	70.2	59.1	44.6
2-3 AM	189	0.0	1500	189	0	0.50	0	70.2	59.1	44.7
3-4 AM	223	0.0	1500	223	0	0.50	0	70.2	59.1	44.6
4-5 AM	434	0.0	1500	434	0	0.53	0	70.2	58.6	43.8
5-6 AM	1285	0.0	OFF	1285	0	0.00	0	69.1	69.1	69.1
6-7 AM	2385	0.0	OFF	2385	0	0.00	0	67.8	67.8	67.8
7-8 AM	4095	0.0	OFF	4095	0	0.00	0	62.9	62.9	62.9
8-9 AM	2812	0.0	OFF	2812	0	0.00	0	67.3	67.3	67.3
9-10 AM	2513	0.0	OFF	2513	0	0.00	0	67.6	67.6	67.6
10-11 AM	2492	0.0	OFF	2492	0	0.00	0	67.6	67.6	67.6
11AM-NOON	2632	0.0	OFF	2632	0	0.00	0	67.4	67.4	67.4
NOON-1PM	2619	0.0	OFF	2619	0	0.00	0	67.5	67.5	67.5
1-2 PM	2688	0.0	OFF	2688	0	0.00	0	67.4	67.4	67.4
2-3 PM	3101	0.0	OFF	3101	0	0.00	0	66.9	66.9	66.9
3-4 PM	3821	0.0	OFF	3821	0	0.00	0	64.8	64.8	64.8
4-5 PM	4279	0.0	OFF	4279	0	0.00	0	61.6	61.6	61.6
5-6 PM	3870	0.0	OFF	3870	0	0.00	0	64.4	64.4	64.4
6-7 PM	2457	0.0	OFF	2457	0	0.00	0	67.7	67.7	67.7
7-8 PM	1529	0.0	1499	1529	0	2.95	49	68.8	32.9	31.1
8-9 PM	1328	0.0	1500	1328	0	1.00	3	69.1	50.4	34.7
9-10 PM	1071	0.0	1500	1071	0	0.59	0	69.4	56.8	41.4
10-11 PM	760	0.0	1500	760	0	0.56	0	69.8	57.6	42.5
11PM-MID	554	0.0	1500	554	0	0.54	0	70.0	58.2	43.3

"OFF" INDICATES NO ROAD WORK (ALL LANES OPEN TO TRAFFIC)

----- SITE BREAKDOWN DELAYS -----	
BREAKDOWN DURATION (MINS)	0
RANGE OF QUEUE DELAY - MIN (VEH-H) MAX	0.0
AV BREAKDOWNS PER DAY	0.00
AV QUEUE DELAY/DAY (VEH-H)	0.0
AV TOTAL DELAY/DAY (VEH-H)	0.0

----- SITE ACCIDENT DELAYS -----	
BREAKDOWN DURATION (MINS)	0
RANGE OF QUEUE DELAY - MIN (VEH-H) MAX	0
AV BREAKDOWNS PER DAY	0
AV QUEUE DELAY/DAY (VEH-H)	0
AV TOTAL DELAY/DAY (VEH-H)	0

AVERAGE ACCIDENT NUMBERS (PIA/DAY)	
MAIN ROUTE WITHOUT WORKS	0.0235
MAIN ROUTE WITH WORKS	0.0231
'DIVERSION'	0.0000

PIA: Personal Injury Accidents

ECONOMIC IMPACT ON ROAD USERS	
ROAD USER COSTS PER DAY	\$1,726
CONGESTED HOURS PER DAY*	0

*Delays Exceeding User-Specified Maximum

**USH 41: USH 10 TO STH 114 (WINNEBAGO COUNTY)
NIGHTTIME 2 LANE CLOSURE
NO DIVERSION ROUTE (MAX QUEUE METHOD)**

OCTOBER

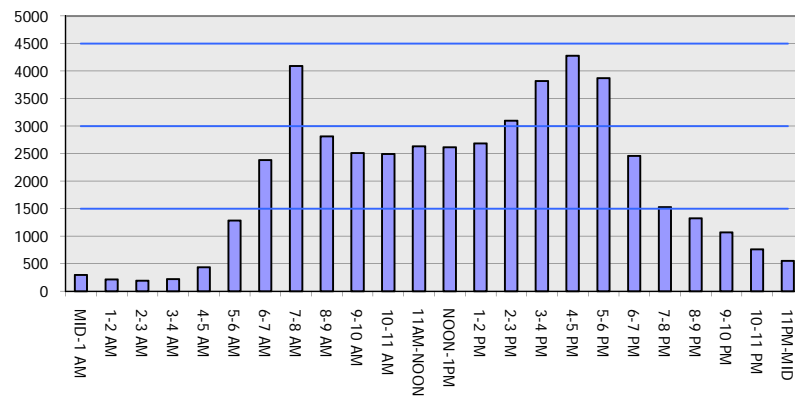
Analyzed for 2009
Construction Season

GRAPHICAL REPRESENTATION OF TRAFFIC MODEL INPUT AND OUTPUT

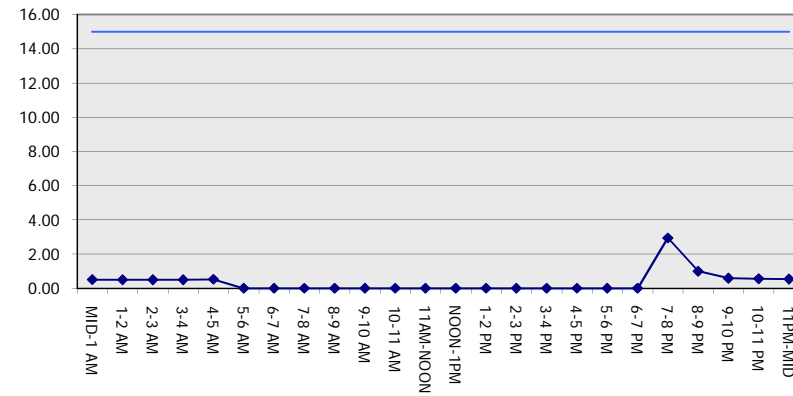
MON-THUR

NORTHBOUND DIRECTION

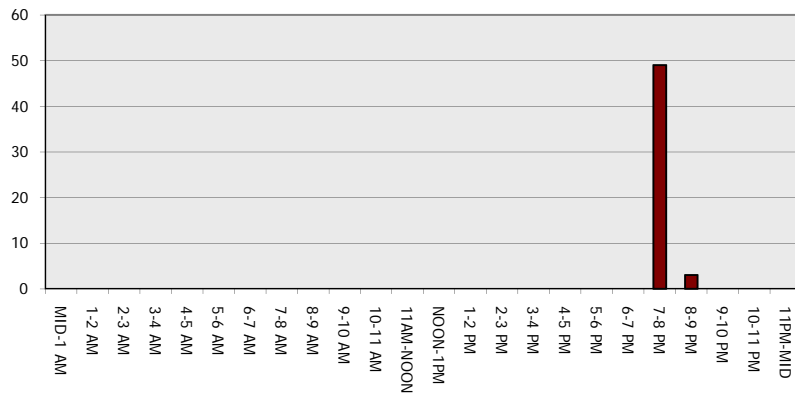
Main Route - Traffic Demand (Vehicles Per Hour)



Main Route Average Delay Per Vehicle (Minutes)



Main Route - Average Queue Length (Vehicles)



Main Route - Average Speed (MPH)

