

<b>USH 41: USH 10 TO STH 114 (WINNEBAGO COUNTY)                  NIGHTTIME 2 LANE CLOSURE                  NO DIVERSION ROUTE (MAX QUEUE METHOD)</b>	<b>OCTOBER</b>
	Analyzed for 2009 Construction Season

**SUMMARY OF TRAFFIC MODEL OUTPUT**

FRIDAY      SOUTHBOUND DIRECTION

TIME OF DAY	FLOWS AND CAPACITY IN VEH/HR						AVERAGE SPEEDS IN MPH				
	MAIN ROUTE		SITE CAPA CITY	FLOW		AV.DEL PER VEH (MINS)	AVERAGE QUEUE (VEH)	MAIN ROUTE		SITE	
	DEMAND FLOW	PCT HEAVY		MAIN ROUTE	'DIVER TED'			WITHOUT WORK ZONE	WITH WORK ZONE		
MID-1 AM	335	0.0	1500	335	0	0.51	0	70.2	58.8	44.2	
1-2 AM	234	0.0	1500	234	0	0.50	0	70.2	59.0	44.5	
2-3 AM	289	0.0	1500	289	0	0.51	0	70.2	58.9	44.3	
3-4 AM	305	0.0	1500	305	0	0.51	0	70.2	58.9	44.3	
4-5 AM	515	0.0	1500	515	0	0.53	0	70.1	58.3	43.5	
5-6 AM	1240	0.0	OFF	1240	0	0.00	0	69.2	69.2	69.2	
6-7 AM	2466	0.0	OFF	2466	0	0.00	0	67.7	67.7	67.7	
7-8 AM	3653	0.0	OFF	3653	0	0.00	0	65.9	65.9	65.9	
8-9 AM	2943	0.0	OFF	2943	0	0.00	0	67.1	67.1	67.1	
9-10 AM	2448	0.0	OFF	2448	0	0.00	0	67.7	67.7	67.7	
10-11 AM	2669	0.0	OFF	2669	0	0.00	0	67.4	67.4	67.4	
11AM-NOON	2874	0.0	OFF	2874	0	0.00	0	67.2	67.2	67.2	
NOON-1PM	3207	0.0	OFF	3207	0	0.00	0	66.8	66.8	66.8	
1-2 PM	3489	0.0	OFF	3489	0	0.00	0	66.4	66.4	66.4	
2-3 PM	3770	0.0	OFF	3770	0	0.00	0	65.1	65.1	65.1	
3-4 PM	4128	0.0	OFF	4128	0	0.00	0	62.7	62.7	62.7	
4-5 PM	4472	0.0	OFF	4472	0	0.00	0	60.3	60.3	60.3	
5-6 PM	4086	0.0	OFF	4086	0	0.00	0	63.0	63.0	63.0	
6-7 PM	2812	0.0	OFF	2812	0	0.00	0	67.3	67.3	67.3	
7-8 PM	1971	0.0	1499	1927	44	9.83+	263	68.3	14.8	30.8	
8-9 PM	1707	0.0	1500	1478	229	16.27+	397	68.6	9.8	30.8	
9-10 PM	1537	0.0	1499	1483	54	16.30+	398	68.8	9.8	30.8	
10-11 PM	1204	0.0	1499	1204	0	10.27	264	69.2	14.3	32.5	
11PM-MID	772	0.0	1500	772	0	0.73	7	69.8	54.7	42.5	

"OFF" INDICATES NO ROAD WORK (ALL LANES OPEN TO TRAFFIC)

+ INDICATES QUEUEING EXCEEDS USER-SPECIFIED MAXIMUM LIMIT

*----- SITE BREAKDOWN DELAYS -----*	
BREAKDOWN DURATION (MINS)	0
RANGE OF QUEUE DELAY - MIN (VEH-H) MAX	0.0
AV BREAKDOWNS PER DAY	0.00
AV QUEUE DELAY/DAY (VEH-H)	0.0
AV TOTAL DELAY/DAY (VEH-H)	0.0

*----- SITE ACCIDENT DELAYS -----*	
BREAKDOWN DURATION (MINS)	0
RANGE OF QUEUE DELAY - MIN (VEH-H) MAX	0
AV BREAKDOWNS PER DAY	0
AV QUEUE DELAY/DAY (VEH-H)	0
AV TOTAL DELAY/DAY (VEH-H)	0

AVERAGE ACCIDENT NUMBERS (PIA/DAY)	
MAIN ROUTE WITHOUT WORKS	0.0262
MAIN ROUTE WITH WORKS	0.0255
'DIVERSION'	0.0004
PIA: Personal Injury Accidents	
IMPACTS ON ROAD USERS	
ROAD USER COSTS PER DAY	\$20,820
CONGESTED HOURS PER DAY*	3

\*Delays Exceeding User-Specified Maximum

**USH 41: USH 10 TO STH 114 (WINNEBAGO COUNTY)  
 NIGHTTIME 2 LANE CLOSURE  
 NO DIVERSION ROUTE (MAX QUEUE METHOD)**

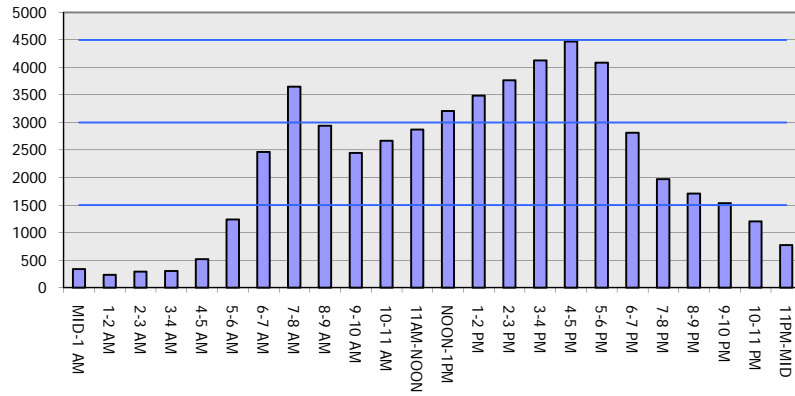
**OCTOBER**

Analyzed for 2009  
 Construction Season

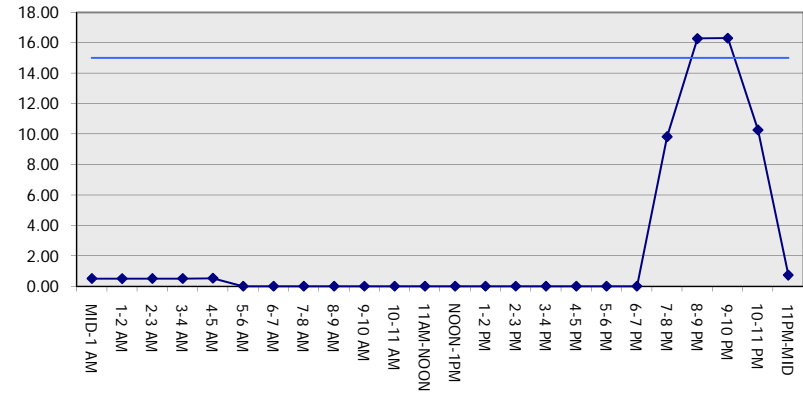
**GRAPHICAL REPRESENTATION OF TRAFFIC MODEL INPUT AND OUTPUT**

**FRIDAY SOUTHBOUND DIRECTION**

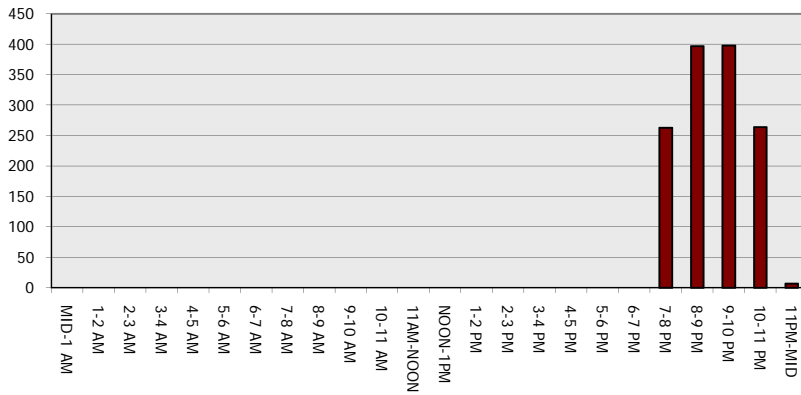
**Main Route - Traffic Demand (Vehicles Per Hour)**



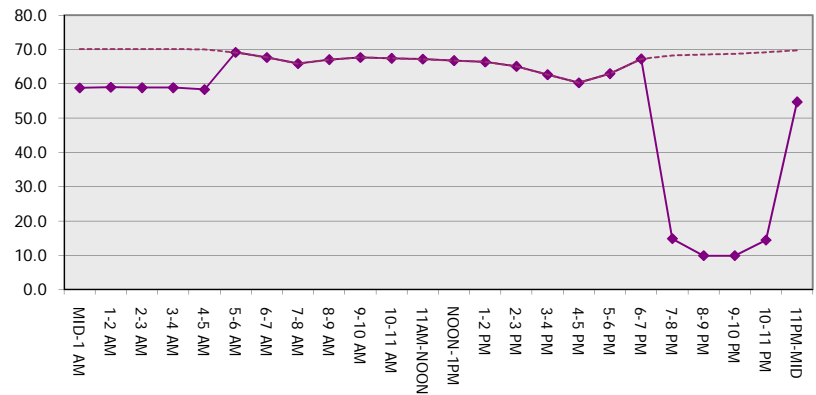
**Main Route Average Delay Per Vehicle (Minutes)**



**Main Route - Average Queue Length (Vehicles)**



**Main Route - Average Speed (MPH)**



<b>USH 41: USH 10 TO STH 114 (WINNEBAGO COUNTY)                  NIGHTTIME 2 LANE CLOSURE                  NO DIVERSION ROUTE (MAX QUEUE METHOD)</b>	<b>OCTOBER</b>
	Analyzed for 2009 Construction Season

**SUMMARY OF TRAFFIC MODEL OUTPUT**

FRIDAY NORTHBOUND DIRECTION

TIME OF DAY	FLOWS AND CAPACITY IN VEH/HR							AVERAGE SPEEDS IN MPH		
	MAIN ROUTE		SITE CAPA CITY	FLOW		AV.DEL PER VEH (MINS)	AVERAGE QUEUE (VEH)	MAIN ROUTE		SITE
	DEMAND FLOW	PCT HEAVY		MAIN ROUTE	'DIVER TED'			WITHOUT WORK ZONE	WITH WORK ZONE	
MID-1 AM	371	0.0	1500	371	0	0.52	0	70.2	58.7	44.0
1-2 AM	291	0.0	1500	291	0	0.51	0	70.2	58.9	44.3
2-3 AM	260	0.0	1500	260	0	0.50	0	70.2	58.9	44.5
3-4 AM	259	0.0	1500	259	0	0.50	0	70.2	58.9	44.5
4-5 AM	458	0.0	1500	458	0	0.53	0	70.2	58.5	43.7
5-6 AM	1152	0.0	OFF	1152	0	0.00	0	69.3	69.3	69.3
6-7 AM	2206	0.0	OFF	2206	0	0.00	0	68.0	68.0	68.0
7-8 AM	3765	0.0	OFF	3765	0	0.00	0	65.1	65.1	65.1
8-9 AM	2763	0.0	OFF	2763	0	0.00	0	67.3	67.3	67.3
9-10 AM	2712	0.0	OFF	2712	0	0.00	0	67.4	67.4	67.4
10-11 AM	3013	0.0	OFF	3013	0	0.00	0	67.0	67.0	67.0
11AM-NOON	3376	0.0	OFF	3376	0	0.00	0	66.5	66.5	66.5
NOON-1PM	3435	0.0	OFF	3435	0	0.00	0	66.4	66.4	66.4
1-2 PM	3672	0.0	OFF	3672	0	0.00	0	65.8	65.8	65.8
2-3 PM	4006	0.0	OFF	4006	0	0.00	0	63.5	63.5	63.5
3-4 PM	4665	0.0	OFF	4665	0	0.00	0	59.0	59.0	59.0
4-5 PM	4930	0.0	OFF	4930	0	0.00	0	57.2	57.2	57.2
5-6 PM	4731	0.0	OFF	4731	0	0.00	0	58.6	58.6	58.6
6-7 PM	3555	0.0	OFF	3555	0	0.00	0	66.3	66.3	66.3
7-8 PM	2453	0.0	1499	1785	668	13.29+	331	67.7	11.6	34.9
8-9 PM	1719	0.0	1499	1584	135	15.37+	376	68.6	10.3	30.8
9-10 PM	1492	0.0	1499	1492	0	15.83+	385	68.9	10.1	30.8
10-11 PM	1057	0.0	1499	1057	0	4.63	168	69.4	25.5	36.4
11PM-MID	778	0.0	1500	778	0	0.56	0	69.7	57.6	42.5

"OFF" INDICATES NO ROAD WORK (ALL LANES OPEN TO TRAFFIC)

+ INDICATES QUEUEING EXCEEDS USER-SPECIFIED MAXIMUM LIMIT

*----- SITE BREAKDOWN DELAYS -----*	
BREAKDOWN DURATION (MINS)	0
RANGE OF QUEUE DELAY - MIN (VEH-H) MAX	0.0
AV BREAKDOWNS PER DAY	0.00
AV QUEUE DELAY/DAY (VEH-H)	0.0
AV TOTAL DELAY/DAY (VEH-H)	0.0

*----- SITE ACCIDENT DELAYS -----*	
BREAKDOWN DURATION (MINS)	0
RANGE OF QUEUE DELAY - MIN (VEH-H) MAX	0
AV BREAKDOWNS PER DAY	0
AV QUEUE DELAY/DAY (VEH-H)	0
AV TOTAL DELAY/DAY (VEH-H)	0

AVERAGE ACCIDENT NUMBERS (PIA/DAY)	
MAIN ROUTE WITHOUT WORKS	0.0282
MAIN ROUTE WITH WORKS	0.0272
'DIVERSION'	0.0009

PIA: Personal Injury Accidents

ECONOMIC IMPACT ON ROAD USERS	
ROAD USER COSTS PER DAY	\$21,503
CONGESTED HOURS PER DAY*	3

\*Delays Exceeding User-Specified Maximum

**USH 41: USH 10 TO STH 114 (WINNEBAGO COUNTY)  
 NIGHTTIME 2 LANE CLOSURE  
 NO DIVERSION ROUTE (MAX QUEUE METHOD)**

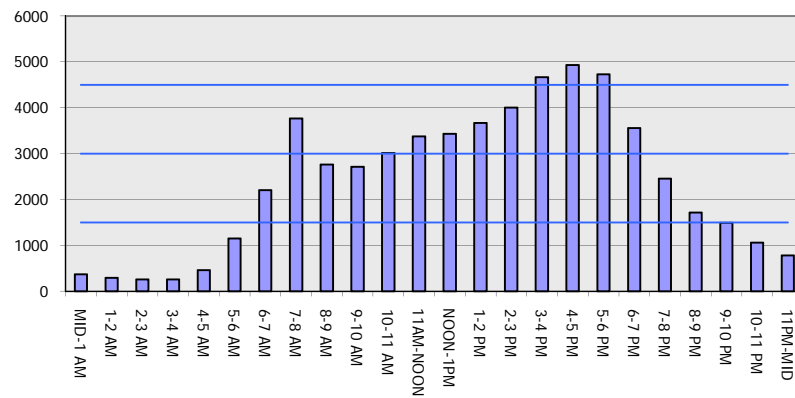
**OCTOBER**

Analyzed for 2009  
 Construction Season

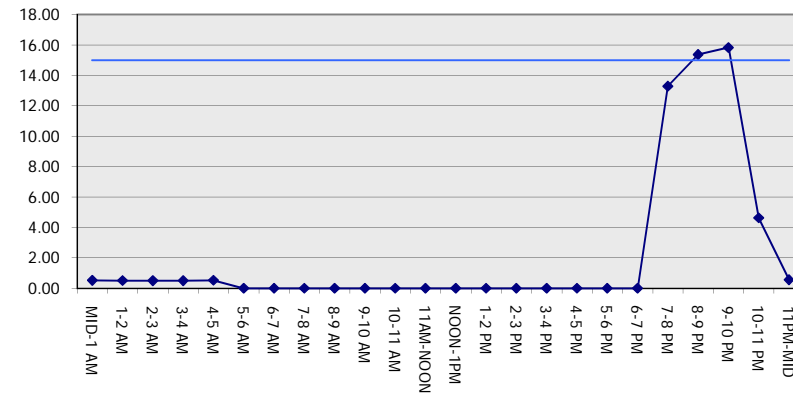
**GRAPHICAL REPRESENTATION OF TRAFFIC MODEL INPUT AND OUTPUT**

**FRIDAY NORTHBOUND DIRECTION**

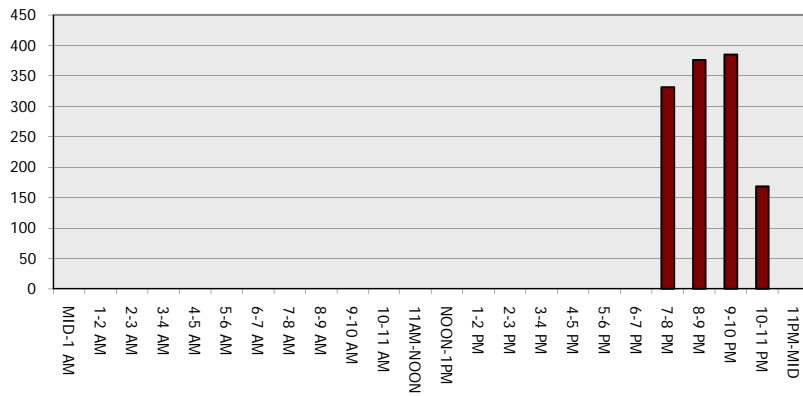
**Main Route - Traffic Demand (Vehicles Per Hour)**



**Main Route Average Delay Per Vehicle (Minutes)**



**Main Route - Average Queue Length (Vehicles)**



**Main Route - Average Speed (MPH)**

