

USH 41: USH 10 TO STH 114 (WINNEBAGO COUNTY) NIGHTTIME CLOSURE NO DIVERSION ROUTE (MAX QUEUE METHOD)	OCTOBER
	Analyzed for 2009 Construction Season

SUMMARY OF TRAFFIC MODEL OUTPUT

FRIDAY SOUTHBOUND DIRECTION

TIME OF DAY	FLOWS AND CAPACITY IN VEH/HR						AVERAGE SPEEDS IN MPH			
	MAIN ROUTE		SITE CAPA CITY	FLOW		AV.DEL PER VEH (MINS)	AVERAGE QUEUE (VEH)	MAIN ROUTE		SITE
	DEMAND FLOW	PCT HEAVY		MAIN ROUTE	'DIVER TED'			WITHOUT WORK ZONE	WITH WORK ZONE	
MID-1 AM	335	0.0	3000	335	0	0.36	0	70.2	61.8	49.7
1-2 AM	234	0.0	3000	234	0	0.36	0	70.2	61.8	49.7
2-3 AM	289	0.0	3000	289	0	0.36	0	70.2	61.8	49.7
3-4 AM	305	0.0	3000	305	0	0.36	0	70.2	61.8	49.7
4-5 AM	515	0.0	3000	515	0	0.36	0	70.1	61.7	49.7
5-6 AM	1240	0.0	OFF	1240	0	0.00	0	69.2	69.2	69.2
6-7 AM	2466	0.0	OFF	2466	0	0.00	0	67.7	67.7	67.7
7-8 AM	3653	0.0	OFF	3653	0	0.00	0	65.9	65.9	65.9
8-9 AM	2943	0.0	OFF	2943	0	0.00	0	67.1	67.1	67.1
9-10 AM	2448	0.0	OFF	2448	0	0.00	0	67.7	67.7	67.7
10-11 AM	2669	0.0	OFF	2669	0	0.00	0	67.4	67.4	67.4
11AM-NOON	2874	0.0	OFF	2874	0	0.00	0	67.2	67.2	67.2
NOON-1PM	3207	0.0	OFF	3207	0	0.00	0	66.8	66.8	66.8
1-2 PM	3489	0.0	OFF	3489	0	0.00	0	66.4	66.4	66.4
2-3 PM	3770	0.0	OFF	3770	0	0.00	0	65.1	65.1	65.1
3-4 PM	4128	0.0	OFF	4128	0	0.00	0	62.7	62.7	62.7
4-5 PM	4472	0.0	OFF	4472	0	0.00	0	60.3	60.3	60.3
5-6 PM	4086	0.0	OFF	4086	0	0.00	0	63.0	63.0	63.0
6-7 PM	2812	0.0	OFF	2812	0	0.00	0	67.3	67.3	67.3
7-8 PM	1971	0.0	3000	1971	0	0.34	0	68.3	60.8	49.7
8-9 PM	1707	0.0	3000	1707	0	0.34	0	68.6	61.0	49.7
9-10 PM	1537	0.0	3000	1537	0	0.34	0	68.8	61.1	49.7
10-11 PM	1204	0.0	3000	1204	0	0.35	0	69.2	61.3	49.7
11PM-MID	772	0.0	3000	772	0	0.35	0	69.8	61.6	49.7

"OFF" INDICATES NO ROAD WORK (ALL LANES OPEN TO TRAFFIC)

----- SITE BREAKDOWN DELAYS -----	
BREAKDOWN DURATION (MINS)	0
RANGE OF QUEUE DELAY - MIN (VEH-H) MAX	0.0
AV BREAKDOWNS PER DAY	0.00
AV QUEUE DELAY/DAY (VEH-H)	0.0
AV TOTAL DELAY/DAY (VEH-H)	0.0

----- SITE ACCIDENT DELAYS -----	
BREAKDOWN DURATION (MINS)	0
RANGE OF QUEUE DELAY - MIN (VEH-H) MAX	0
AV BREAKDOWNS PER DAY	0
AV QUEUE DELAY/DAY (VEH-H)	0
AV TOTAL DELAY/DAY (VEH-H)	0

AVERAGE ACCIDENT NUMBERS (PIA/DAY)	
MAIN ROUTE WITHOUT WORKS	0.0262
MAIN ROUTE WITH WORKS	0.0256
'DIVERSION'	0.0000
PIA: Personal Injury Accidents	
IMPACTS ON ROAD USERS	
ROAD USER COSTS PER DAY	\$631
CONGESTED HOURS PER DAY*	0

*Delays Exceeding User-Specified Maximum

**USH 41: USH 10 TO STH 114 (WINNEBAGO COUNTY)
NIGHTTIME CLOSURE
NO DIVERSION ROUTE (MAX QUEUE METHOD)**

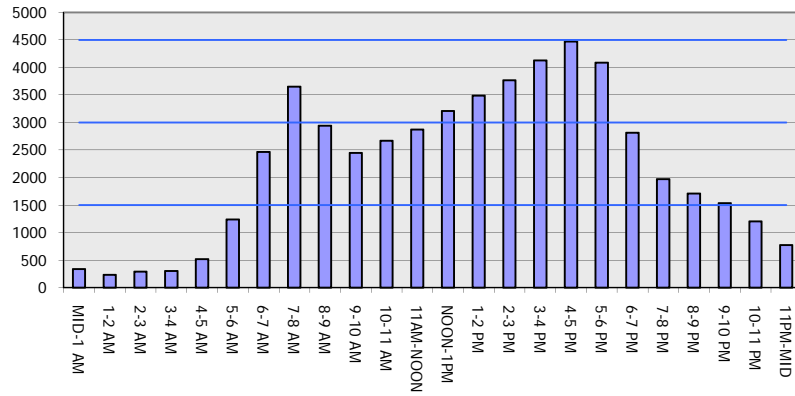
OCTOBER

Analyzed for 2009
Construction Season

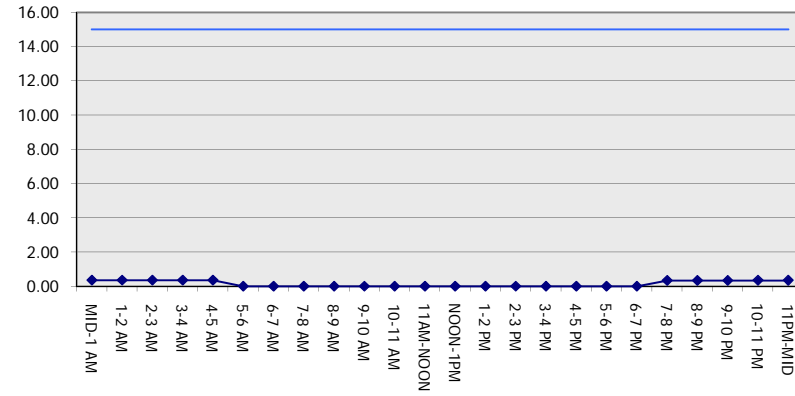
GRAPHICAL REPRESENTATION OF TRAFFIC MODEL INPUT AND OUTPUT

FRIDAY SOUTHBOUND DIRECTION

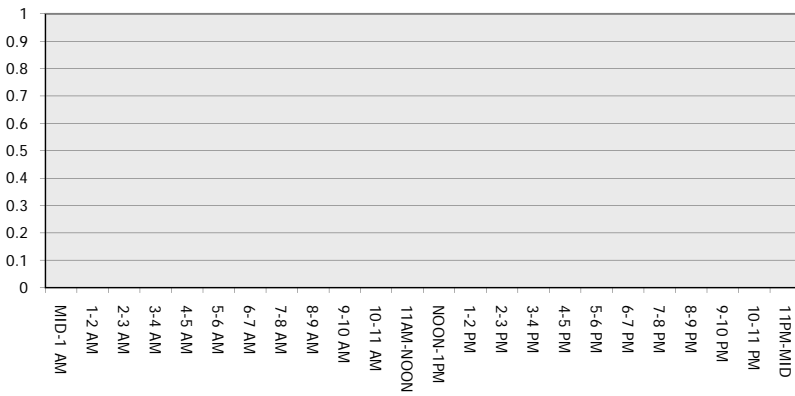
Main Route - Traffic Demand (Vehicles Per Hour)



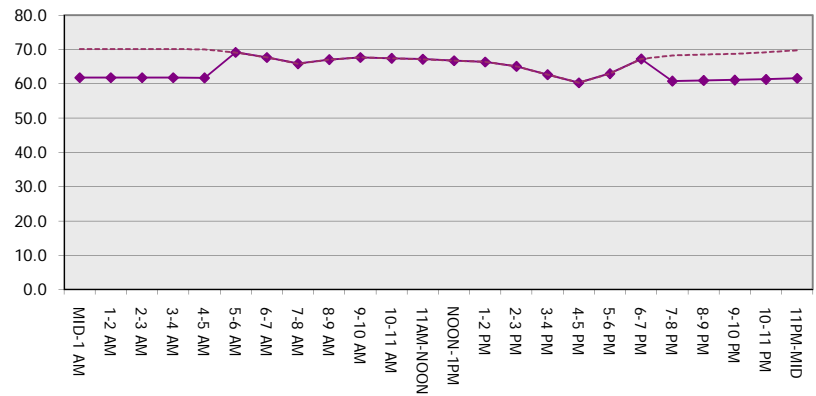
Main Route Average Delay Per Vehicle (Minutes)



Main Route - Average Queue Length (Vehicles)



Main Route - Average Speed (MPH)



USH 41: USH 10 TO STH 114 (WINNEBAGO COUNTY) NIGHTTIME CLOSURE NO DIVERSION ROUTE (MAX QUEUE METHOD)	OCTOBER
	Analyzed for 2009 Construction Season

SUMMARY OF TRAFFIC MODEL OUTPUT

FRIDAY NORTHBOUND DIRECTION

TIME OF DAY	FLOWS AND CAPACITY IN VEH/HR						AVERAGE SPEEDS IN MPH			
	MAIN ROUTE		SITE CAPA CITY	FLOW		AV.DEL PER VEH (MINS)	AVERAGE QUEUE (VEH)	MAIN ROUTE		SITE
	DEMAND FLOW	PCT HEAVY		MAIN ROUTE	'DIVER TED'			WITHOUT WORK ZONE	WITH WORK ZONE	
MID-1 AM	371	0.0	3000	371	0	0.36	0	70.2	61.8	49.7
1-2 AM	291	0.0	3000	291	0	0.36	0	70.2	61.8	49.7
2-3 AM	260	0.0	3000	260	0	0.36	0	70.2	61.8	49.7
3-4 AM	259	0.0	3000	259	0	0.36	0	70.2	61.8	49.7
4-5 AM	458	0.0	3000	458	0	0.36	0	70.2	61.8	49.7
5-6 AM	1152	0.0	OFF	1152	0	0.00	0	69.3	69.3	69.3
6-7 AM	2206	0.0	OFF	2206	0	0.00	0	68.0	68.0	68.0
7-8 AM	3765	0.0	OFF	3765	0	0.00	0	65.1	65.1	65.1
8-9 AM	2763	0.0	OFF	2763	0	0.00	0	67.3	67.3	67.3
9-10 AM	2712	0.0	OFF	2712	0	0.00	0	67.4	67.4	67.4
10-11 AM	3013	0.0	OFF	3013	0	0.00	0	67.0	67.0	67.0
11AM-NOON	3376	0.0	OFF	3376	0	0.00	0	66.5	66.5	66.5
NOON-1PM	3435	0.0	OFF	3435	0	0.00	0	66.4	66.4	66.4
1-2 PM	3672	0.0	OFF	3672	0	0.00	0	65.8	65.8	65.8
2-3 PM	4006	0.0	OFF	4006	0	0.00	0	63.5	63.5	63.5
3-4 PM	4665	0.0	OFF	4665	0	0.00	0	59.0	59.0	59.0
4-5 PM	4930	0.0	OFF	4930	0	0.00	0	57.2	57.2	57.2
5-6 PM	4731	0.0	OFF	4731	0	0.00	0	58.6	58.6	58.6
6-7 PM	3555	0.0	OFF	3555	0	0.00	0	66.3	66.3	66.3
7-8 PM	2453	0.0	3000	2453	0	0.37	0	67.7	59.6	47.9
8-9 PM	1719	0.0	3000	1719	0	0.34	0	68.6	61.0	49.7
9-10 PM	1492	0.0	3000	1492	0	0.34	0	68.9	61.1	49.7
10-11 PM	1057	0.0	3000	1057	0	0.35	0	69.4	61.4	49.7
11PM-MID	778	0.0	3000	778	0	0.35	0	69.7	61.6	49.7

"OFF" INDICATES NO ROAD WORK (ALL LANES OPEN TO TRAFFIC)

----- SITE BREAKDOWN DELAYS -----	
BREAKDOWN DURATION (MINS)	0
RANGE OF QUEUE DELAY - MIN (VEH-H) MAX	0.0
AV BREAKDOWNS PER DAY	0.00
AV QUEUE DELAY/DAY (VEH-H)	0.0
AV TOTAL DELAY/DAY (VEH-H)	0.0

----- SITE ACCIDENT DELAYS -----	
BREAKDOWN DURATION (MINS)	0
RANGE OF QUEUE DELAY - MIN (VEH-H) MAX	0
AV BREAKDOWNS PER DAY	0
AV QUEUE DELAY/DAY (VEH-H)	0
AV TOTAL DELAY/DAY (VEH-H)	0

AVERAGE ACCIDENT NUMBERS (PIA/DAY)	
MAIN ROUTE WITHOUT WORKS	0.0282
MAIN ROUTE WITH WORKS	0.0276
'DIVERSION'	0.0000

PIA: Personal Injury Accidents

ECONOMIC IMPACT ON ROAD USERS	
ROAD USER COSTS PER DAY	\$664
CONGESTED HOURS PER DAY*	0

*Delays Exceeding User-Specified Maximum

**USH 41: USH 10 TO STH 114 (WINNEBAGO COUNTY)
NIGHTTIME CLOSURE
NO DIVERSION ROUTE (MAX QUEUE METHOD)**

OCTOBER

Analyzed for 2009
Construction Season

**GRAPHICAL REPRESENTATION OF TRAFFIC MODEL INPUT AND OUTPUT
FRIDAY NORTHBOUND DIRECTION**

