

USH 41: USH 10 TO STH 114 (WINNEBAGO COUNTY) NIGHTTIME 2 LANE CLOSURE NO DIVERSION ROUTE (MAX QUEUE METHOD)	AUGUST
	Analyzed for 2009 Construction Season

SUMMARY OF TRAFFIC MODEL OUTPUT

MON-THUR SOUTHBOUND DIRECTION

TIME OF DAY	FLOWS AND CAPACITY IN VEH/HR						AVERAGE SPEEDS IN MPH				
	MAIN ROUTE		SITE CAPA CITY	FLOW		AV.DEL PER VEH (MINS)	AVERAGE QUEUE (VEH)	MAIN ROUTE		SITE	
	DEMAND FLOW	PCT HEAVY		MAIN ROUTE	'DIVER TED'			WITHOUT WORK ZONE	WITH WORK ZONE		
MID-1 AM	336	0.0	1500	336	0	0.51	0	70.2	58.8	44.2	
1-2 AM	242	0.0	1500	242	0	0.50	0	70.2	59.0	44.5	
2-3 AM	242	0.0	1500	242	0	0.50	0	70.2	59.0	44.5	
3-4 AM	315	0.0	1500	315	0	0.51	0	70.2	58.8	44.2	
4-5 AM	595	0.0	1500	595	0	0.54	0	70.0	58.1	43.2	
5-6 AM	1395	0.0	OFF	1395	0	0.00	0	69.0	69.0	69.0	
6-7 AM	2698	0.0	OFF	2698	0	0.00	0	67.4	67.4	67.4	
7-8 AM	3663	0.0	OFF	3663	0	0.00	0	65.8	65.8	65.8	
8-9 AM	2890	0.0	OFF	2890	0	0.00	0	67.1	67.1	67.1	
9-10 AM	2513	0.0	OFF	2513	0	0.00	0	67.6	67.6	67.6	
10-11 AM	2500	0.0	OFF	2500	0	0.00	0	67.6	67.6	67.6	
11AM-NOON	2583	0.0	OFF	2583	0	0.00	0	67.5	67.5	67.5	
NOON-1PM	2711	0.0	OFF	2711	0	0.00	0	67.4	67.4	67.4	
1-2 PM	2991	0.0	OFF	2991	0	0.00	0	67.0	67.0	67.0	
2-3 PM	3278	0.0	OFF	3278	0	0.00	0	66.6	66.6	66.6	
3-4 PM	3491	0.0	OFF	3491	0	0.00	0	66.4	66.4	66.4	
4-5 PM	4010	0.0	OFF	4010	0	0.00	0	63.5	63.5	63.5	
5-6 PM	3734	0.0	OFF	3734	0	0.00	0	65.3	65.3	65.3	
6-7 PM	2366	0.0	OFF	2366	0	0.00	0	67.8	67.8	67.8	
7-8 PM	1705	0.0	1499	1705	0	5.53	127	68.6	22.5	30.8	
8-9 PM	1550	0.0	1499	1550	0	10.30	241	68.8	14.3	30.8	
9-10 PM	1333	0.0	1499	1333	0	7.91	187	69.1	17.6	31.3	
10-11 PM	1054	0.0	1500	1054	0	0.89	10	69.4	52.1	40.7	
11PM-MID	704	0.0	1500	704	0	0.55	0	69.9	57.8	42.7	

"OFF" INDICATES NO ROAD WORK (ALL LANES OPEN TO TRAFFIC)

----- SITE BREAKDOWN DELAYS -----	
BREAKDOWN DURATION (MINS)	0
RANGE OF QUEUE DELAY - MIN (VEH-H) MAX	0.0
AV BREAKDOWNS PER DAY	0.00
AV QUEUE DELAY/DAY (VEH-H)	0.0
AV TOTAL DELAY/DAY (VEH-H)	0.0

----- SITE ACCIDENT DELAYS -----	
BREAKDOWN DURATION (MINS)	0
RANGE OF QUEUE DELAY - MIN (VEH-H) MAX	0
AV BREAKDOWNS PER DAY	0
AV QUEUE DELAY/DAY (VEH-H)	0
AV TOTAL DELAY/DAY (VEH-H)	0

AVERAGE ACCIDENT NUMBERS (PIA/DAY)	
MAIN ROUTE WITHOUT WORKS	0.0241
MAIN ROUTE WITH WORKS	0.0236
'DIVERSION'	0.0000
<small>PIA: Personal Injury Accidents</small>	
IMPACTS ON ROAD USERS	
ROAD USER COSTS PER DAY	\$9,049
CONGESTED HOURS PER DAY*	0

*Delays Exceeding User-Specified Maximum

**USH 41: USH 10 TO STH 114 (WINNEBAGO COUNTY)
 NIGHTTIME 2 LANE CLOSURE
 NO DIVERSION ROUTE (MAX QUEUE METHOD)**

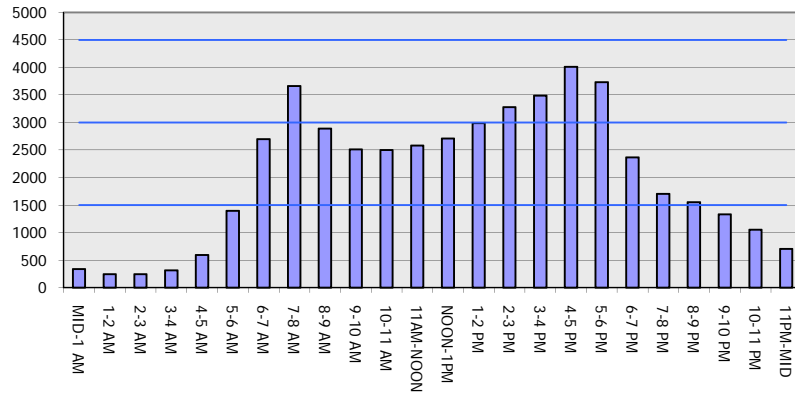
AUGUST

Analyzed for 2009
 Construction Season

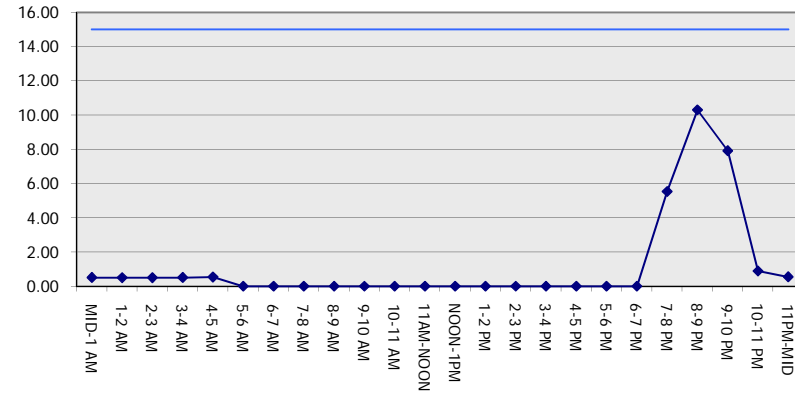
GRAPHICAL REPRESENTATION OF TRAFFIC MODEL INPUT AND OUTPUT

MON-THUR SOUTHBOUND DIRECTION

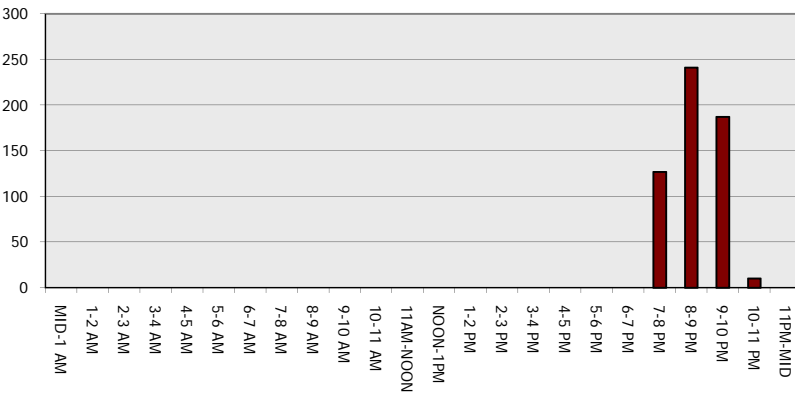
Main Route - Traffic Demand (Vehicles Per Hour)



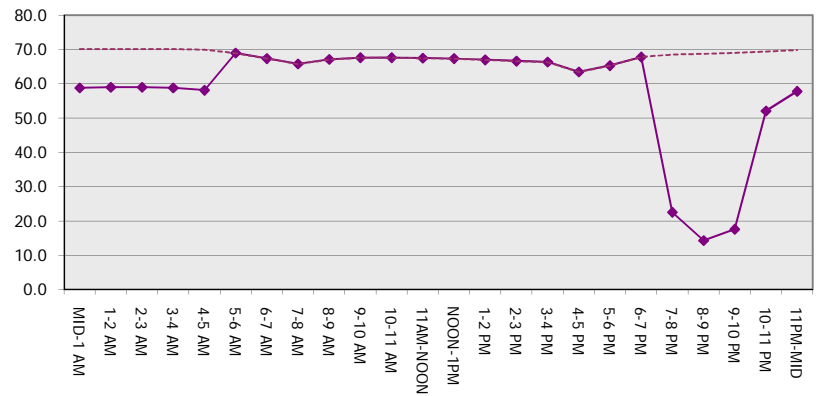
Main Route Average Delay Per Vehicle (Minutes)



Main Route - Average Queue Length (Vehicles)



Main Route - Average Speed (MPH)



USH 41: USH 10 TO STH 114 (WINNEBAGO COUNTY) NIGHTTIME 2 LANE CLOSURE NO DIVERSION ROUTE (MAX QUEUE METHOD)	AUGUST
	Analyzed for 2009 Construction Season

SUMMARY OF TRAFFIC MODEL OUTPUT

MON-THUR NORTHBOUND DIRECTION

TIME OF DAY	FLOWS AND CAPACITY IN VEH/HR						AVERAGE SPEEDS IN MPH			
	MAIN ROUTE		SITE CAPA CITY	FLOW		AV.DEL PER VEH (MINS)	AVERAGE QUEUE (VEH)	MAIN ROUTE		SITE
	DEMAND FLOW	PCT HEAVY		MAIN ROUTE	'DIVER TED'			WITHOUT WORK ZONE	WITH WORK ZONE	
MID-1 AM	354	0.0	1500	354	0	0.52	0	70.2	58.7	44.1
1-2 AM	260	0.0	1500	260	0	0.50	0	70.2	59.1	44.6
2-3 AM	224	0.0	1500	224	0	0.50	0	70.2	59.0	44.5
3-4 AM	248	0.0	1500	248	0	0.50	0	70.2	59.0	44.5
4-5 AM	478	0.0	1500	478	0	0.53	0	70.1	58.4	43.6
5-6 AM	1338	0.0	OFF	1338	0	0.00	0	69.1	69.1	69.1
6-7 AM	2410	0.0	OFF	2410	0	0.00	0	67.8	67.8	67.8
7-8 AM	3754	0.0	OFF	3754	0	0.00	0	65.2	65.2	65.2
8-9 AM	2771	0.0	OFF	2771	0	0.00	0	67.3	67.3	67.3
9-10 AM	2559	0.0	OFF	2559	0	0.00	0	67.6	67.6	67.6
10-11 AM	2698	0.0	OFF	2698	0	0.00	0	67.4	67.4	67.4
11AM-NOON	2807	0.0	OFF	2807	0	0.00	0	67.3	67.3	67.3
NOON-1PM	2780	0.0	OFF	2780	0	0.00	0	67.3	67.3	67.3
1-2 PM	2892	0.0	OFF	2892	0	0.00	0	67.1	67.1	67.1
2-3 PM	3246	0.0	OFF	3246	0	0.00	0	66.7	66.7	66.7
3-4 PM	3793	0.0	OFF	3793	0	0.00	0	65.0	65.0	65.0
4-5 PM	4275	0.0	OFF	4275	0	0.00	0	61.7	61.7	61.7
5-6 PM	3963	0.0	OFF	3963	0	0.00	0	63.8	63.8	63.8
6-7 PM	2580	0.0	OFF	2580	0	0.00	0	67.5	67.5	67.5
7-8 PM	1742	0.0	1499	1742	0	6.49	155	68.6	20.2	30.8
8-9 PM	1467	0.0	1499	1467	0	10.32	241	68.9	14.3	30.8
9-10 PM	1210	0.0	1499	1210	0	3.06	89	69.2	32.4	35.3
10-11 PM	927	0.0	1500	927	0	0.58	0	69.6	57.2	41.9
11PM-MID	679	0.0	1500	679	0	0.55	0	69.9	57.9	42.8

"OFF" INDICATES NO ROAD WORK (ALL LANES OPEN TO TRAFFIC)

----- SITE BREAKDOWN DELAYS -----	
BREAKDOWN DURATION (MINS)	0
RANGE OF QUEUE DELAY - MIN (VEH-H) MAX	0.0
AV BREAKDOWNS PER DAY	0.00
AV QUEUE DELAY/DAY (VEH-H)	0.0
AV TOTAL DELAY/DAY (VEH-H)	0.0

----- SITE ACCIDENT DELAYS -----	
BREAKDOWN DURATION (MINS)	0
RANGE OF QUEUE DELAY - MIN (VEH-H) MAX	0
AV BREAKDOWNS PER DAY	0
AV QUEUE DELAY/DAY (VEH-H)	0
AV TOTAL DELAY/DAY (VEH-H)	0

AVERAGE ACCIDENT NUMBERS (PIA/DAY)	
MAIN ROUTE WITHOUT WORKS	0.0244
MAIN ROUTE WITH WORKS	0.0239
'DIVERSION'	0.0000

PIA: Personal Injury Accidents

ECONOMIC IMPACT ON ROAD USERS	
ROAD USER COSTS PER DAY	\$7,556
CONGESTED HOURS PER DAY*	0

*Delays Exceeding User-Specified Maximum

**USH 41: USH 10 TO STH 114 (WINNEBAGO COUNTY)
NIGHTTIME 2 LANE CLOSURE
NO DIVERSION ROUTE (MAX QUEUE METHOD)**

AUGUST
Analyzed for 2009
Construction Season

GRAPHICAL REPRESENTATION OF TRAFFIC MODEL INPUT AND OUTPUT
MON-THUR NORTHBOUND DIRECTION

