

USH 41: USH 10 TO STH 114 (WINNEBAGO COUNTY) NIGHTTIME CLOSURE NO DIVERSION ROUTE (MAX QUEUE METHOD)	AUGUST
	Analyzed for 2009 Construction Season

SUMMARY OF TRAFFIC MODEL OUTPUT

FRIDAY SOUTHBOUND DIRECTION

TIME OF DAY	FLOWS AND CAPACITY IN VEH/HR						AVERAGE SPEEDS IN MPH			
	MAIN ROUTE		SITE CAPA CITY	FLOW		AV.DEL PER VEH (MINS)	AVERAGE QUEUE (VEH)	MAIN ROUTE		SITE
	DEMAND FLOW	PCT HEAVY		MAIN ROUTE	'DIVER TED'			WITHOUT WORK ZONE	WITH WORK ZONE	
MID-1 AM	513	0.0	3000	513	0	0.36	0	70.1	61.7	49.7
1-2 AM	293	0.0	3000	293	0	0.36	0	70.2	61.8	49.7
2-3 AM	291	0.0	3000	291	0	0.36	0	70.2	61.8	49.7
3-4 AM	336	0.0	3000	336	0	0.36	0	70.2	61.8	49.7
4-5 AM	553	0.0	3000	553	0	0.36	0	70.0	61.7	49.7
5-6 AM	1221	0.0	OFF	1221	0	0.00	0	69.2	69.2	69.2
6-7 AM	2407	0.0	OFF	2407	0	0.00	0	67.8	67.8	67.8
7-8 AM	3254	0.0	OFF	3254	0	0.00	0	66.7	66.7	66.7
8-9 AM	2788	0.0	OFF	2788	0	0.00	0	67.3	67.3	67.3
9-10 AM	2674	0.0	OFF	2674	0	0.00	0	67.4	67.4	67.4
10-11 AM	2857	0.0	OFF	2857	0	0.00	0	67.2	67.2	67.2
11AM-NOON	3059	0.0	OFF	3059	0	0.00	0	66.9	66.9	66.9
NOON-1PM	3269	0.0	OFF	3269	0	0.00	0	66.7	66.7	66.7
1-2 PM	3549	0.0	OFF	3549	0	0.00	0	66.3	66.3	66.3
2-3 PM	3893	0.0	OFF	3893	0	0.00	0	64.3	64.3	64.3
3-4 PM	4012	0.0	OFF	4012	0	0.00	0	63.5	63.5	63.5
4-5 PM	4231	0.0	OFF	4231	0	0.00	0	62.0	62.0	62.0
5-6 PM	3618	0.0	OFF	3618	0	0.00	0	66.1	66.1	66.1
6-7 PM	2504	0.0	OFF	2504	0	0.00	0	67.6	67.6	67.6
7-8 PM	1816	0.0	3000	1816	0	0.34	0	68.5	60.9	49.7
8-9 PM	1539	0.0	3000	1539	0	0.34	0	68.8	61.1	49.7
9-10 PM	1475	0.0	3000	1475	0	0.34	0	68.9	61.1	49.7
10-11 PM	1222	0.0	3000	1222	0	0.35	0	69.2	61.3	49.7
11PM-MID	737	0.0	3000	737	0	0.35	0	69.8	61.6	49.7

"OFF" INDICATES NO ROAD WORK (ALL LANES OPEN TO TRAFFIC)

----- SITE BREAKDOWN DELAYS -----	
BREAKDOWN DURATION (MINS)	0
RANGE OF QUEUE DELAY - MIN (VEH-H) MAX	0.0
AV BREAKDOWNS PER DAY	0.00
AV QUEUE DELAY/DAY (VEH-H)	0.0
AV TOTAL DELAY/DAY (VEH-H)	0.0

----- SITE ACCIDENT DELAYS -----	
BREAKDOWN DURATION (MINS)	0
RANGE OF QUEUE DELAY - MIN (VEH-H) MAX	0
AV BREAKDOWNS PER DAY	0
AV QUEUE DELAY/DAY (VEH-H)	0
AV TOTAL DELAY/DAY (VEH-H)	0

AVERAGE ACCIDENT NUMBERS (PIA/DAY)	
MAIN ROUTE WITHOUT WORKS	0.0257
MAIN ROUTE WITH WORKS	0.0251
'DIVERSION'	0.0000
<small>PIA: Personal Injury Accidents</small>	
IMPACTS ON ROAD USERS	
ROAD USER COSTS PER DAY	\$631
CONGESTED HOURS PER DAY*	0

*Delays Exceeding User-Specified Maximum

**USH 41: USH 10 TO STH 114 (WINNEBAGO COUNTY)
NIGHTTIME CLOSURE
NO DIVERSION ROUTE (MAX QUEUE METHOD)**

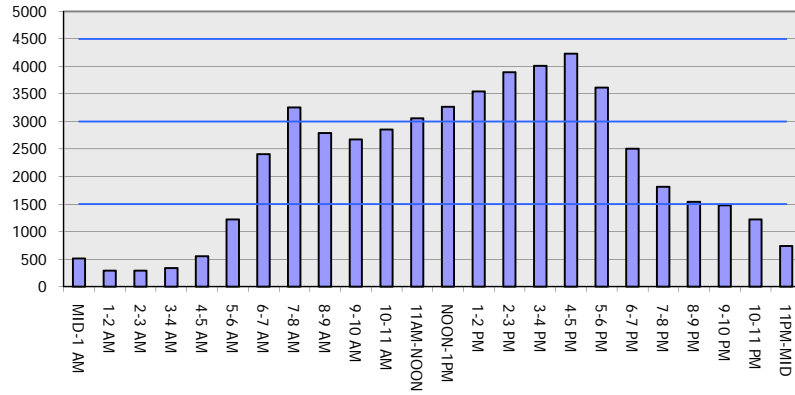
AUGUST

Analyzed for 2009
Construction Season

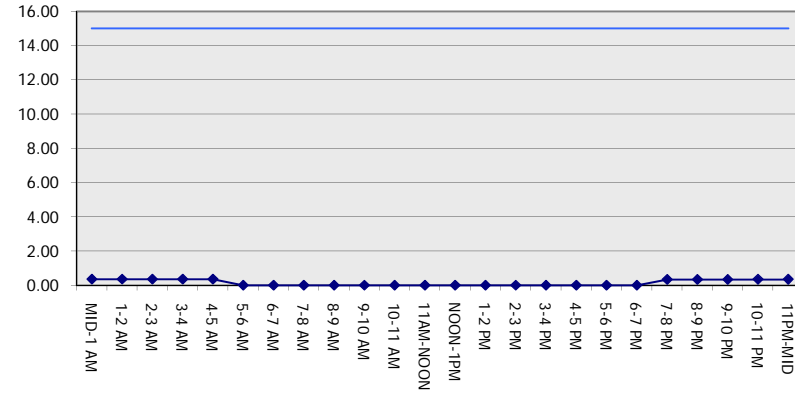
GRAPHICAL REPRESENTATION OF TRAFFIC MODEL INPUT AND OUTPUT

FRIDAY SOUTHBOUND DIRECTION

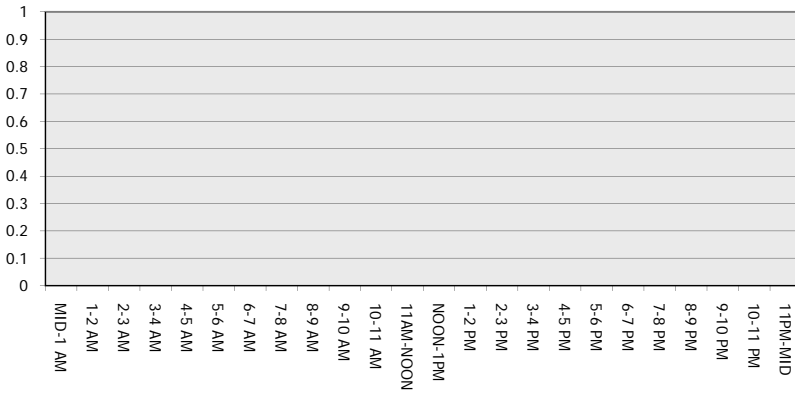
Main Route - Traffic Demand (Vehicles Per Hour)



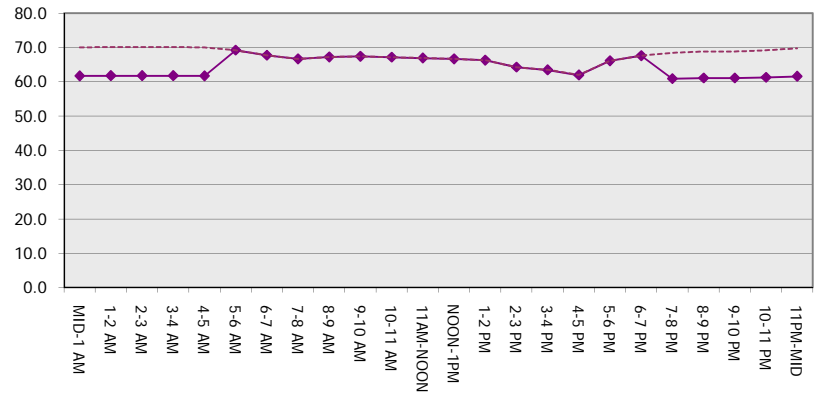
Main Route Average Delay Per Vehicle (Minutes)



Main Route - Average Queue Length (Vehicles)



Main Route - Average Speed (MPH)



USH 41: USH 10 TO STH 114 (WINNEBAGO COUNTY) NIGHTTIME CLOSURE NO DIVERSION ROUTE (MAX QUEUE METHOD)	AUGUST
	Analyzed for 2009 Construction Season

SUMMARY OF TRAFFIC MODEL OUTPUT

FRIDAY NORTHBOUND DIRECTION

TIME OF DAY	FLOWS AND CAPACITY IN VEH/HR							AVERAGE SPEEDS IN MPH		
	MAIN ROUTE		SITE CAPA CITY	FLOW		AV.DEL PER VEH (MINS)	AVERAGE QUEUE (VEH)	MAIN ROUTE		SITE
	DEMAND FLOW	PCT HEAVY		MAIN ROUTE	'DIVER TED'			WITHOUT WORK ZONE	WITH WORK ZONE	
MID-1 AM	447	0.0	3000	447	0	0.36	0	70.2	61.8	49.7
1-2 AM	301	0.0	3000	301	0	0.36	0	70.2	61.8	49.7
2-3 AM	283	0.0	3000	283	0	0.36	0	70.2	61.8	49.7
3-4 AM	272	0.0	3000	272	0	0.36	0	70.2	61.8	49.7
4-5 AM	488	0.0	3000	488	0	0.36	0	70.1	61.8	49.7
5-6 AM	1236	0.0	OFF	1236	0	0.00	0	69.2	69.2	69.2
6-7 AM	2219	0.0	OFF	2219	0	0.00	0	68.0	68.0	68.0
7-8 AM	3393	0.0	OFF	3393	0	0.00	0	66.5	66.5	66.5
8-9 AM	2720	0.0	OFF	2720	0	0.00	0	67.4	67.4	67.4
9-10 AM	2747	0.0	OFF	2747	0	0.00	0	67.3	67.3	67.3
10-11 AM	3048	0.0	OFF	3048	0	0.00	0	66.9	66.9	66.9
11AM-NOON	3278	0.0	OFF	3278	0	0.00	0	66.6	66.6	66.6
NOON-1PM	3444	0.0	OFF	3444	0	0.00	0	66.4	66.4	66.4
1-2 PM	3596	0.0	OFF	3596	0	0.00	0	66.3	66.3	66.3
2-3 PM	3997	0.0	OFF	3997	0	0.00	0	63.5	63.5	63.5
3-4 PM	4353	0.0	OFF	4353	0	0.00	0	61.1	61.1	61.1
4-5 PM	4648	0.0	OFF	4648	0	0.00	0	59.1	59.1	59.1
5-6 PM	4437	0.0	OFF	4437	0	0.00	0	60.5	60.5	60.5
6-7 PM	3541	0.0	OFF	3541	0	0.00	0	66.3	66.3	66.3
7-8 PM	2747	0.0	3000	2747	0	0.56	0	67.3	55.9	41.5
8-9 PM	2055	0.0	3000	2055	0	0.33	0	68.2	60.7	49.7
9-10 PM	1692	0.0	3000	1692	0	0.34	0	68.6	61.0	49.7
10-11 PM	1281	0.0	3000	1281	0	0.35	0	69.1	61.2	49.7
11PM-MID	1017	0.0	3000	1017	0	0.35	0	69.5	61.4	49.7

"OFF" INDICATES NO ROAD WORK (ALL LANES OPEN TO TRAFFIC)

----- SITE BREAKDOWN DELAYS -----	
BREAKDOWN DURATION (MINS)	0
RANGE OF QUEUE DELAY - MIN (VEH-H) MAX	0.0
AV BREAKDOWNS PER DAY	0.00
AV QUEUE DELAY/DAY (VEH-H)	0.0
AV TOTAL DELAY/DAY (VEH-H)	0.0

----- SITE ACCIDENT DELAYS -----	
BREAKDOWN DURATION (MINS)	0
RANGE OF QUEUE DELAY - MIN (VEH-H) MAX	0
AV BREAKDOWNS PER DAY	0
AV QUEUE DELAY/DAY (VEH-H)	0
AV TOTAL DELAY/DAY (VEH-H)	0

AVERAGE ACCIDENT NUMBERS (PIA/DAY)	
MAIN ROUTE WITHOUT WORKS	0.0282
MAIN ROUTE WITH WORKS	0.0275
'DIVERSION'	0.0000

PIA: Personal Injury Accidents

ECONOMIC IMPACT ON ROAD USERS	
ROAD USER COSTS PER DAY	\$880
CONGESTED HOURS PER DAY*	0

*Delays Exceeding User-Specified Maximum

**USH 41: USH 10 TO STH 114 (WINNEBAGO COUNTY)
NIGHTTIME CLOSURE
NO DIVERSION ROUTE (MAX QUEUE METHOD)**

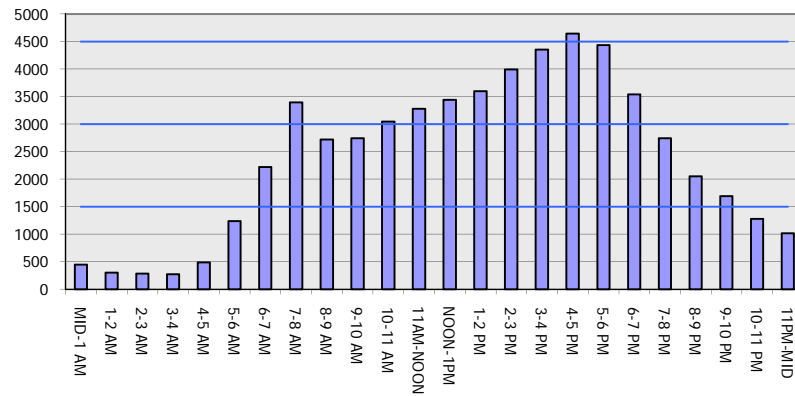
AUGUST

Analyzed for 2009
Construction Season

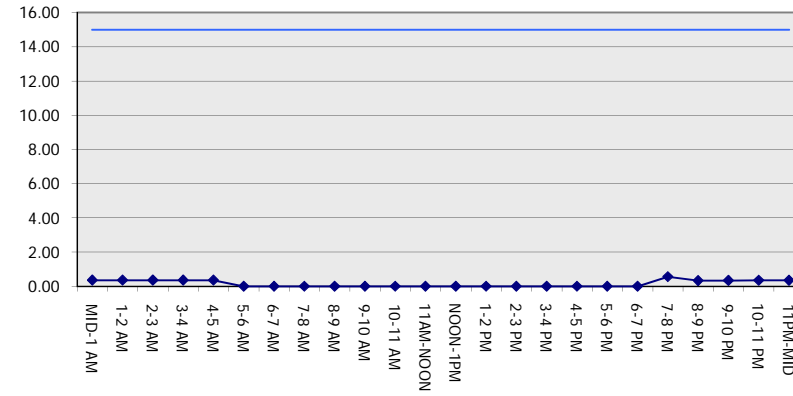
GRAPHICAL REPRESENTATION OF TRAFFIC MODEL INPUT AND OUTPUT

FRIDAY NORTHBOUND DIRECTION

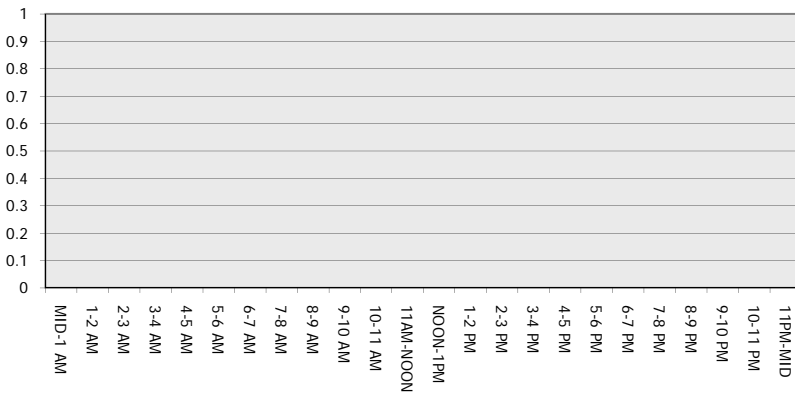
Main Route - Traffic Demand (Vehicles Per Hour)



Main Route Average Delay Per Vehicle (Minutes)



Main Route - Average Queue Length (Vehicles)



Main Route - Average Speed (MPH)

