

<b>USH 41: STH 76 TO USH 45 (WINNEBAGO COUNTY)</b> <b>NIGHTTIME CLOSURE</b> <b>NO DIVERSION ROUTE (MAX QUEUE METHOD)</b>	<b>OCTOBER</b>
	Analyzed for 2009 Construction Season

**SUMMARY OF TRAFFIC MODEL OUTPUT**

MON-THUR                  SOUTHBOUND DIRECTION

TIME OF DAY	FLOWS AND CAPACITY IN VEH/HR						AVERAGE SPEEDS IN MPH			
	MAIN ROUTE		SITE CAPA CITY	FLOW		AV.DEL PER VEH (MINS)	AVERAGE QUEUE (VEH)	MAIN ROUTE		SITE
	DEMAND FLOW	PCT HEAVY		MAIN ROUTE	'DIVER TED'			WITHOUT WORK ZONE	WITH WORK ZONE	
MID-1 AM	256	0.0	1500	256	0	0.45	0	65.9	56.9	44.5
1-2 AM	180	0.0	1500	180	0	0.44	0	66.1	57.1	44.8
2-3 AM	134	0.0	1500	134	0	0.44	0	66.1	57.3	45.0
3-4 AM	180	0.0	1500	180	0	0.44	0	66.1	57.1	44.8
4-5 AM	358	0.0	1500	358	0	0.46	0	65.7	56.6	44.0
5-6 AM	889	0.0	OFF	889	0	0.00	0	64.7	64.7	64.7
6-7 AM	1763	0.0	OFF	1763	0	0.00	0	63.1	63.1	63.1
7-8 AM	2500	0.0	OFF	2500	0	0.00	0	60.9	60.9	60.9
8-9 AM	1815	0.0	OFF	1815	0	0.00	0	63.0	63.0	63.0
9-10 AM	1521	0.0	OFF	1521	0	0.00	0	63.5	63.5	63.5
10-11 AM	1501	0.0	OFF	1501	0	0.00	0	63.6	63.6	63.6
11AM-NOON	1553	0.0	OFF	1553	0	0.00	0	63.5	63.5	63.5
NOON-1PM	1579	0.0	OFF	1579	0	0.00	0	63.5	63.5	63.5
1-2 PM	1686	0.0	OFF	1686	0	0.00	0	63.2	63.2	63.2
2-3 PM	1931	0.0	OFF	1931	0	0.00	0	62.8	62.8	62.8
3-4 PM	2128	0.0	OFF	2128	0	0.00	0	62.4	62.4	62.4
4-5 PM	2433	0.0	OFF	2433	0	0.00	0	61.5	61.5	61.5
5-6 PM	2092	0.0	OFF	2092	0	0.00	0	62.5	62.5	62.5
6-7 PM	1251	0.0	OFF	1251	0	0.00	0	64.0	64.0	64.0
7-8 PM	906	0.0	1500	906	0	0.51	0	64.7	55.0	42.0
8-9 PM	817	0.0	1500	817	0	0.50	0	64.8	55.2	42.4
9-10 PM	663	0.0	1500	663	0	0.49	0	65.1	55.6	42.9
10-11 PM	460	0.0	1500	460	0	0.47	0	65.5	56.3	43.7
11PM-MID	286	0.0	1500	286	0	0.45	0	65.8	56.8	44.3

"OFF" INDICATES NO ROAD WORK (ALL LANES OPEN TO TRAFFIC)

*----- SITE BREAKDOWN DELAYS -----*	
BREAKDOWN DURATION (MINS)	0
RANGE OF QUEUE DELAY - MIN (VEH-H) MAX	0.0
AV BREAKDOWNS PER DAY	0.00
AV QUEUE DELAY/DAY (VEH-H)	0.0
AV TOTAL DELAY/DAY (VEH-H)	0.0

*----- SITE ACCIDENT DELAYS -----*	
BREAKDOWN DURATION (MINS)	0
RANGE OF QUEUE DELAY - MIN (VEH-H) MAX	0
AV BREAKDOWNS PER DAY	0
AV QUEUE DELAY/DAY (VEH-H)	0
AV TOTAL DELAY/DAY (VEH-H)	0

AVERAGE ACCIDENT NUMBERS (PIA/DAY)	
MAIN ROUTE WITHOUT WORKS	0.0143
MAIN ROUTE WITH WORKS	0.0140
'DIVERSION'	0.0000
PIA: Personal Injury Accidents	
IMPACTS ON ROAD USERS	
ROAD USER COSTS PER DAY	\$419
CONGESTED HOURS PER DAY*	0

\*Delays Exceeding User-Specified Maximum

**USH 41: STH 76 TO USH 45 (WINNEBAGO COUNTY)  
NIGHTTIME CLOSURE  
NO DIVERSION ROUTE (MAX QUEUE METHOD)**

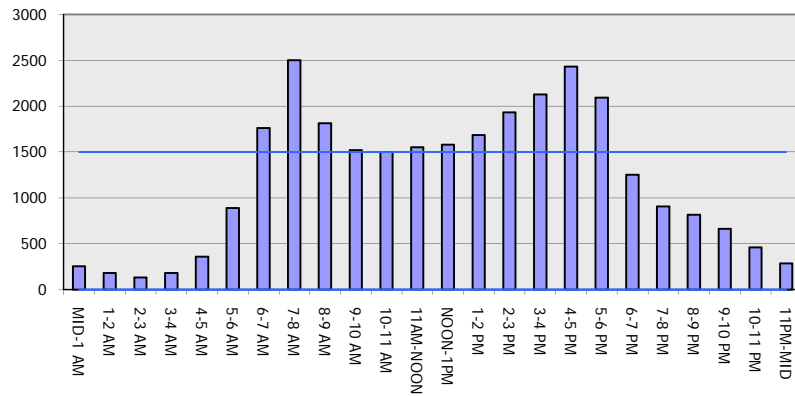
**OCTOBER**

Analyzed for 2009  
Construction Season

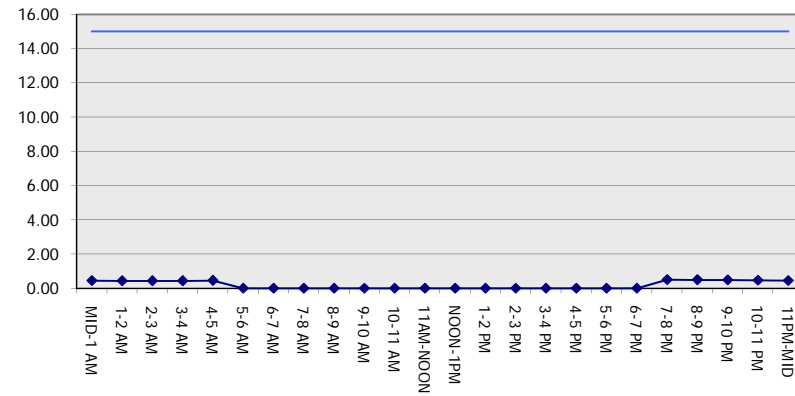
**GRAPHICAL REPRESENTATION OF TRAFFIC MODEL INPUT AND OUTPUT**

**MON-THUR SOUTHBOUND DIRECTION**

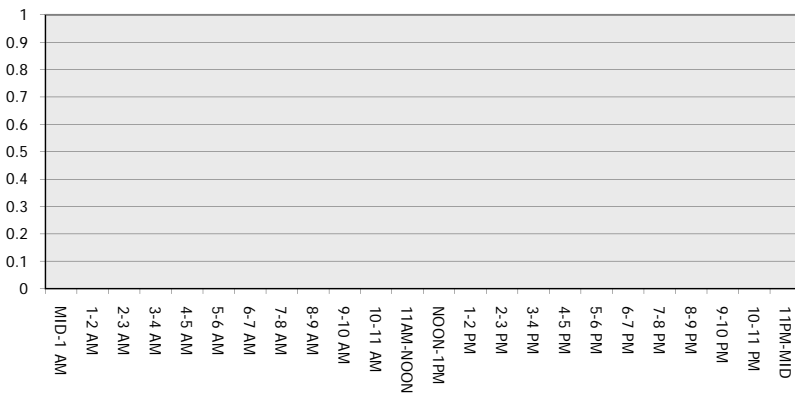
**Main Route - Traffic Demand (Vehicles Per Hour)**



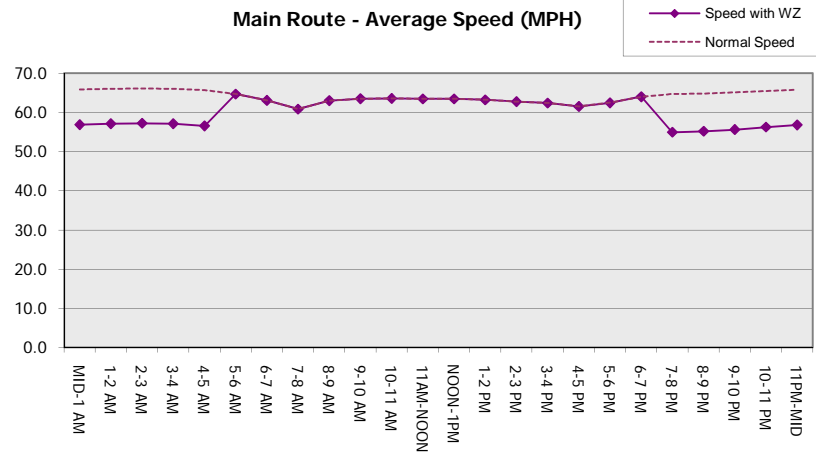
**Main Route Average Delay Per Vehicle (Minutes)**



**Main Route - Average Queue Length (Vehicles)**



**Main Route - Average Speed (MPH)**



<b>USH 41: STH 76 TO USH 45 (WINNEBAGO COUNTY)                  NIGHTTIME CLOSURE                  NO DIVERSION ROUTE (MAX QUEUE METHOD)</b>	<b>OCTOBER</b>
	Analyzed for 2009 Construction Season

**SUMMARY OF TRAFFIC MODEL OUTPUT**

MON-THUR                      NORTHBOUND DIRECTION

TIME OF DAY	FLOWS AND CAPACITY IN VEH/HR						AVERAGE SPEEDS IN MPH			
	MAIN ROUTE		SITE CAPA CITY	FLOW		AV.DEL PER VEH (MINS)	AVERAGE QUEUE (VEH)	MAIN ROUTE		SITE
	DEMAND FLOW	PCT HEAVY		MAIN ROUTE	'DIVER TED'			WITHOUT WORK ZONE	WITH WORK ZONE	
MID-1 AM	184	0.0	1500	184	0	0.44	0	66.0	57.1	44.8
1-2 AM	138	0.0	1500	138	0	0.44	0	66.1	57.3	45.0
2-3 AM	124	0.0	1500	124	0	0.43	0	66.1	57.3	45.0
3-4 AM	153	0.0	1500	153	0	0.44	0	66.1	57.2	44.9
4-5 AM	286	0.0	1500	286	0	0.45	0	65.8	56.8	44.3
5-6 AM	867	0.0	OFF	867	0	0.00	0	64.8	64.8	64.8
6-7 AM	1693	0.0	OFF	1693	0	0.00	0	63.2	63.2	63.2
7-8 AM	2580	0.0	OFF	2580	0	0.00	0	60.1	60.1	60.1
8-9 AM	1754	0.0	OFF	1754	0	0.00	0	63.1	63.1	63.1
9-10 AM	1662	0.0	OFF	1662	0	0.00	0	63.3	63.3	63.3
10-11 AM	1674	0.0	OFF	1674	0	0.00	0	63.3	63.3	63.3
11AM-NOON	1757	0.0	OFF	1757	0	0.00	0	63.1	63.1	63.1
NOON-1PM	1776	0.0	OFF	1776	0	0.00	0	63.1	63.1	63.1
1-2 PM	1862	0.0	OFF	1862	0	0.00	0	62.9	62.9	62.9
2-3 PM	2129	0.0	OFF	2129	0	0.00	0	62.4	62.4	62.4
3-4 PM	2482	0.0	OFF	2482	0	0.00	0	61.1	61.1	61.1
4-5 PM	2869	0.0	OFF	2869	0	0.00	0	57.1	57.1	57.1
5-6 PM	2586	0.0	OFF	2586	0	0.00	0	60.0	60.0	60.0
6-7 PM	1599	0.0	OFF	1599	0	0.00	0	63.4	63.4	63.4
7-8 PM	1042	0.0	1500	1042	0	0.52	0	64.5	54.5	41.5
8-9 PM	890	0.0	1500	890	0	0.51	0	64.7	55.0	42.0
9-10 PM	672	0.0	1500	672	0	0.49	0	65.1	55.6	42.8
10-11 PM	464	0.0	1500	464	0	0.47	0	65.5	56.3	43.7
11PM-MID	316	0.0	1500	316	0	0.45	0	65.8	56.7	44.2

"OFF" INDICATES NO ROAD WORK (ALL LANES OPEN TO TRAFFIC)

*----- SITE BREAKDOWN DELAYS -----*	
BREAKDOWN DURATION (MINS)	0
RANGE OF QUEUE DELAY - MIN (VEH-H) MAX	0.0
AV BREAKDOWNS PER DAY	0.00
AV QUEUE DELAY/DAY (VEH-H)	0.0
AV TOTAL DELAY/DAY (VEH-H)	0.0

*----- SITE ACCIDENT DELAYS -----*	
BREAKDOWN DURATION (MINS)	0
RANGE OF QUEUE DELAY - MIN (VEH-H) MAX	0
AV BREAKDOWNS PER DAY	0
AV QUEUE DELAY/DAY (VEH-H)	0
AV TOTAL DELAY/DAY (VEH-H)	0

AVERAGE ACCIDENT NUMBERS (PIA/DAY)	
MAIN ROUTE WITHOUT WORKS	0.0156
MAIN ROUTE WITH WORKS	0.0153
'DIVERSION'	0.0000

PIA: Personal Injury Accidents

ECONOMIC IMPACT ON ROAD USERS	
ROAD USER COSTS PER DAY	\$427
CONGESTED HOURS PER DAY*	0

\*Delays Exceeding User-Specified Maximum

**USH 41: STH 76 TO USH 45 (WINNEBAGO COUNTY)  
NIGHTTIME CLOSURE  
NO DIVERSION ROUTE (MAX QUEUE METHOD)**

**OCTOBER**

Analyzed for 2009  
Construction Season

**GRAPHICAL REPRESENTATION OF TRAFFIC MODEL INPUT AND OUTPUT  
MON-THUR NORTHBOUND DIRECTION**

