

**USH 41: STH 76 TO USH 45 (WINNEBAGO COUNTY)
NIGHTTIME CLOSURE
NO DIVERSION ROUTE (MAX QUEUE METHOD)**

OCTOBER
Analyzed for 2009
Construction Season

SUMMARY OF TRAFFIC MODEL OUTPUT
FRIDAY SOUTHBOUND DIRECTION

TIME OF DAY	FLOWS AND CAPACITY IN VEH/HR							AVERAGE SPEEDS IN MPH			
	MAIN ROUTE		SITE CAPA CITY	FLOW		AV.DEL PER VEH (MINS)	AVERAGE QUEUE (VEH)	MAIN ROUTE		SITE	
	DEMAND FLOW	PCT HEAVY		MAIN ROUTE	'DIVER TED'			WITHOUT WORK ZONE	WITH WORK ZONE		
MID-1 AM	185	0.0	1500	185	0	0.44	0	66.0	57.1	44.7	
1-2 AM	144	0.0	1500	144	0	0.44	0	66.1	57.3	44.9	
2-3 AM	163	0.0	1500	163	0	0.44	0	66.1	57.2	44.8	
3-4 AM	189	0.0	1500	189	0	0.44	0	66.0	57.1	44.7	
4-5 AM	329	0.0	1500	329	0	0.45	0	65.8	56.6	44.2	
5-6 AM	814	0.0	OFF	814	0	0.00	0	64.9	64.9	64.9	
6-7 AM	1589	0.0	OFF	1589	0	0.00	0	63.4	63.4	63.4	
7-8 AM	2271	0.0	OFF	2271	0	0.00	0	62.2	62.2	62.2	
8-9 AM	1812	0.0	OFF	1812	0	0.00	0	63.0	63.0	63.0	
9-10 AM	1592	0.0	OFF	1592	0	0.00	0	63.4	63.4	63.4	
10-11 AM	1712	0.0	OFF	1712	0	0.00	0	63.2	63.2	63.2	
11AM-NOON	1836	0.0	OFF	1836	0	0.00	0	63.0	63.0	63.0	
NOON-1PM	2018	0.0	OFF	2018	0	0.00	0	62.6	62.6	62.6	
1-2 PM	2122	0.0	OFF	2122	0	0.00	0	62.4	62.4	62.4	
2-3 PM	2325	0.0	OFF	2325	0	0.00	0	62.0	62.0	62.0	
3-4 PM	2560	0.0	OFF	2560	0	0.00	0	60.3	60.3	60.3	
4-5 PM	2740	0.0	OFF	2740	0	0.00	0	58.4	58.4	58.4	
5-6 PM	2417	0.0	OFF	2417	0	0.00	0	61.7	61.7	61.7	
6-7 PM	1675	0.0	OFF	1675	0	0.00	0	63.3	63.3	63.3	
7-8 PM	1109	0.0	1500	1109	0	0.53	0	64.3	54.3	41.3	
8-9 PM	956	0.0	1500	956	0	0.51	0	64.6	54.8	41.9	
9-10 PM	831	0.0	1500	831	0	0.50	0	64.8	55.1	42.3	
10-11 PM	661	0.0	1500	661	0	0.49	0	65.1	55.6	42.9	
11PM-MID	421	0.0	1500	421	0	0.46	0	65.6	56.4	43.8	

"OFF" INDICATES NO ROAD WORK (ALL LANES OPEN TO TRAFFIC)

----- SITE BREAKDOWN DELAYS -----	
BREAKDOWN DURATION (MINS)	0
RANGE OF QUEUE DELAY - MIN (VEH-H) MAX	0.0
AV BREAKDOWNS PER DAY	0.00
AV QUEUE DELAY/DAY (VEH-H)	0.0
AV TOTAL DELAY/DAY (VEH-H)	0.0

----- SITE ACCIDENT DELAYS -----	
BREAKDOWN DURATION (MINS)	0
RANGE OF QUEUE DELAY - MIN (VEH-H) MAX	0
AV BREAKDOWNS PER DAY	0
AV QUEUE DELAY/DAY (VEH-H)	0
AV TOTAL DELAY/DAY (VEH-H)	0

AVERAGE ACCIDENT NUMBERS (PIA/DAY)	
MAIN ROUTE WITHOUT WORKS	0.0160
MAIN ROUTE WITH WORKS	0.0157
'DIVERSION'	0.0000
PIA: Personal Injury Accidents	
IMPACTS ON ROAD USERS	
ROAD USER COSTS PER DAY	\$611
CONGESTED HOURS PER DAY*	0

*Delays Exceeding User-Specified Maximum

**USH 41: STH 76 TO USH 45 (WINNEBAGO COUNTY)
NIGHTTIME CLOSURE
NO DIVERSION ROUTE (MAX QUEUE METHOD)**

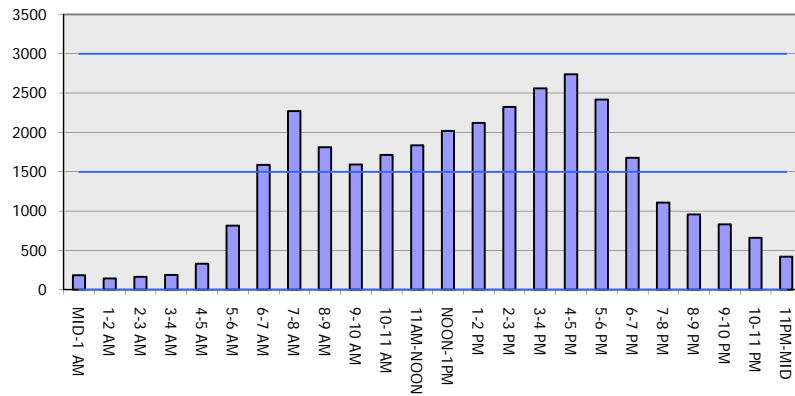
OCTOBER

Analyzed for 2009
Construction Season

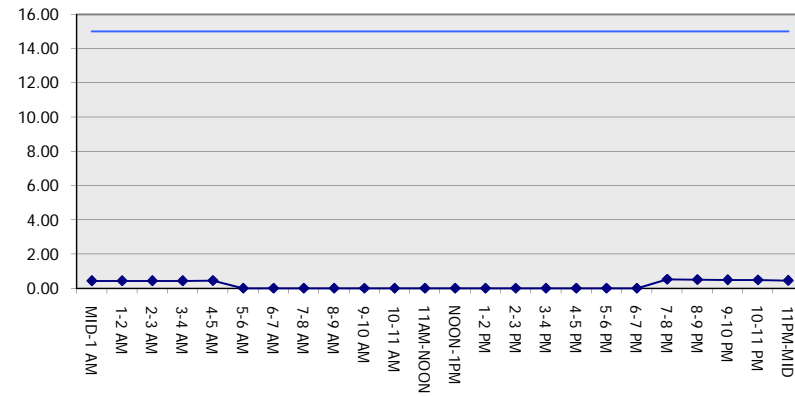
GRAPHICAL REPRESENTATION OF TRAFFIC MODEL INPUT AND OUTPUT

FRIDAY SOUTHBOUND DIRECTION

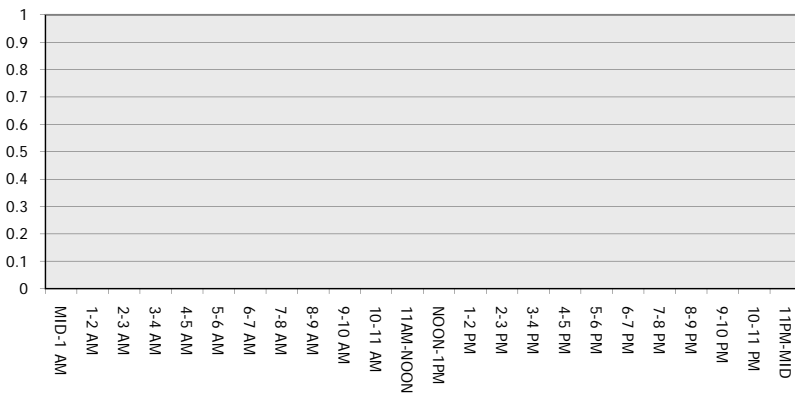
Main Route - Traffic Demand (Vehicles Per Hour)



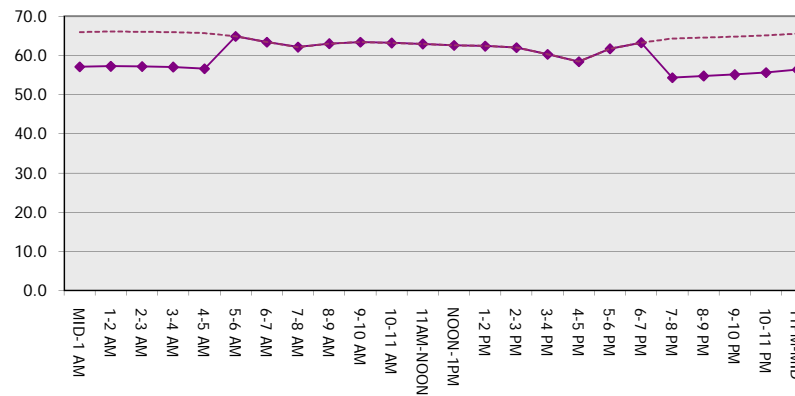
Main Route Average Delay Per Vehicle (Minutes)



Main Route - Average Queue Length (Vehicles)



Main Route - Average Speed (MPH)



USH 41: STH 76 TO USH 45 (WINNEBAGO COUNTY) NIGHTTIME CLOSURE NO DIVERSION ROUTE (MAX QUEUE METHOD)	OCTOBER
	Analyzed for 2009 Construction Season

SUMMARY OF TRAFFIC MODEL OUTPUT

FRIDAY NORTHBOUND DIRECTION

TIME OF DAY	FLOWS AND CAPACITY IN VEH/HR							AVERAGE SPEEDS IN MPH		
	MAIN ROUTE		SITE CAPA CITY	FLOW		AV.DEL PER VEH (MINS)	AVERAGE QUEUE (VEH)	MAIN ROUTE		SITE
	DEMAND FLOW	PCT HEAVY		MAIN ROUTE	'DIVER TED'			WITHOUT WORK ZONE	WITH WORK ZONE	
MID-1 AM	229	0.0	1500	229	0	0.44	0	66.0	56.9	44.6
1-2 AM	178	0.0	1500	178	0	0.44	0	66.1	57.1	44.8
2-3 AM	160	0.0	1500	160	0	0.44	0	66.1	57.2	44.8
3-4 AM	180	0.0	1500	180	0	0.44	0	66.1	57.1	44.8
4-5 AM	293	0.0	1500	293	0	0.45	0	65.8	56.8	44.3
5-6 AM	782	0.0	OFF	782	0	0.00	0	65.0	65.0	65.0
6-7 AM	1569	0.0	OFF	1569	0	0.00	0	63.5	63.5	63.5
7-8 AM	2430	0.0	OFF	2430	0	0.00	0	61.6	61.6	61.6
8-9 AM	1738	0.0	OFF	1738	0	0.00	0	63.2	63.2	63.2
9-10 AM	1846	0.0	OFF	1846	0	0.00	0	63.0	63.0	63.0
10-11 AM	2043	0.0	OFF	2043	0	0.00	0	62.6	62.6	62.6
11AM-NOON	2292	0.0	OFF	2292	0	0.00	0	62.1	62.1	62.1
NOON-1PM	2347	0.0	OFF	2347	0	0.00	0	62.0	62.0	62.0
1-2 PM	2620	0.0	OFF	2620	0	0.00	0	59.7	59.7	59.7
2-3 PM	2860	0.0	OFF	2860	0	0.00	0	57.2	57.2	57.2
3-4 PM	3166	0.0	OFF	3166	0	0.00	0	54.1	54.1	54.1
4-5 PM	3354	0.0	OFF	3354	0	0.00	0	52.2	52.2	52.2
5-6 PM	3280	0.0	OFF	3280	0	0.00	0	52.9	52.9	52.9
6-7 PM	2461	0.0	OFF	2461	0	0.00	0	61.3	61.3	61.3
7-8 PM	1673	0.0	1499	1673	0	5.32	124	63.3	22.5	30.8
8-9 PM	1254	0.0	1499	1254	0	2.84	78	64.0	32.4	34.5
9-10 PM	1017	0.0	1500	1017	0	0.52	0	64.5	54.6	41.6
10-11 PM	653	0.0	1500	653	0	0.49	0	65.1	55.7	42.9
11PM-MID	483	0.0	1500	483	0	0.47	0	65.5	56.2	43.6

"OFF" INDICATES NO ROAD WORK (ALL LANES OPEN TO TRAFFIC)

----- SITE BREAKDOWN DELAYS -----	
BREAKDOWN DURATION (MINS)	0
RANGE OF QUEUE DELAY - MIN (VEH-H) MAX	0.0
AV BREAKDOWNS PER DAY	0.00
AV QUEUE DELAY/DAY (VEH-H)	0.0
AV TOTAL DELAY/DAY (VEH-H)	0.0

----- SITE ACCIDENT DELAYS -----	
BREAKDOWN DURATION (MINS)	0
RANGE OF QUEUE DELAY - MIN (VEH-H) MAX	0
AV BREAKDOWNS PER DAY	0
AV QUEUE DELAY/DAY (VEH-H)	0
AV TOTAL DELAY/DAY (VEH-H)	0

AVERAGE ACCIDENT NUMBERS (PIA/DAY)	
MAIN ROUTE WITHOUT WORKS	0.0192
MAIN ROUTE WITH WORKS	0.0188
'DIVERSION'	0.0000

PIA: Personal Injury Accidents

ECONOMIC IMPACT ON ROAD USERS	
ROAD USER COSTS PER DAY	\$3,483
CONGESTED HOURS PER DAY*	0

*Delays Exceeding User-Specified Maximum

**USH 41: STH 76 TO USH 45 (WINNEBAGO COUNTY)
NIGHTTIME CLOSURE
NO DIVERSION ROUTE (MAX QUEUE METHOD)**

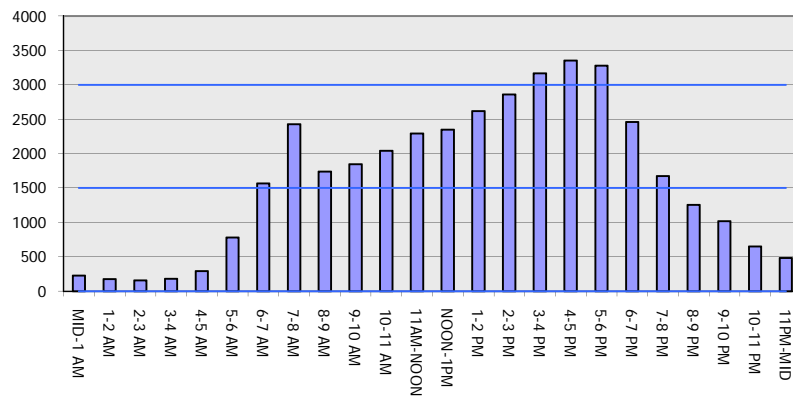
OCTOBER

Analyzed for 2009
Construction Season

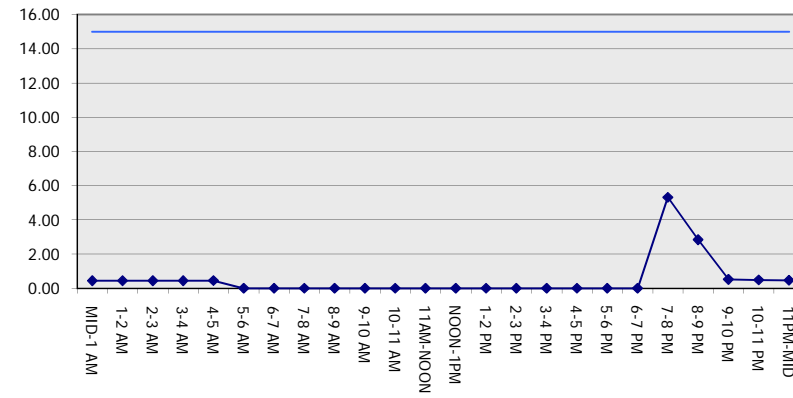
GRAPHICAL REPRESENTATION OF TRAFFIC MODEL INPUT AND OUTPUT

FRIDAY NORTHBOUND DIRECTION

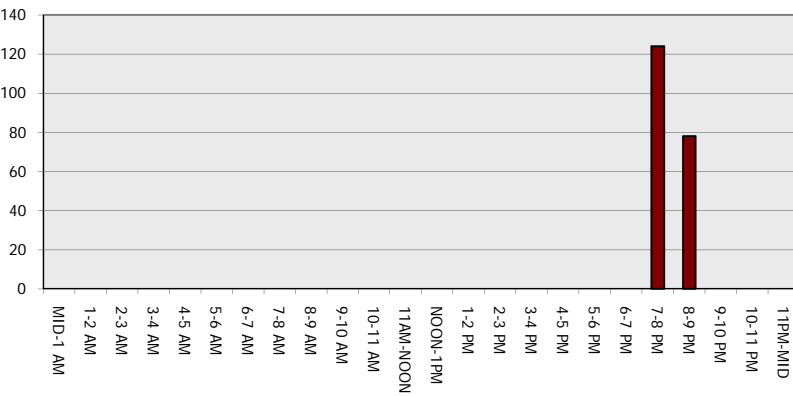
Main Route - Traffic Demand (Vehicles Per Hour)



Main Route Average Delay Per Vehicle (Minutes)



Main Route - Average Queue Length (Vehicles)



Main Route - Average Speed (MPH)

