

USH 41: STH 76 TO USH 45 (WINNEBAGO COUNTY) NIGHTTIME CLOSURE NO DIVERSION ROUTE (MAX QUEUE METHOD)	AUGUST
	Analyzed for 2009 Construction Season

SUMMARY OF TRAFFIC MODEL OUTPUT

SATURDAY SOUTHBOUND DIRECTION

TIME OF DAY	FLOWS AND CAPACITY IN VEH/HR						AVERAGE SPEEDS IN MPH			
	MAIN ROUTE		SITE CAPA CITY	FLOW		AV.DEL PER VEH (MINS)	AVERAGE QUEUE (VEH)	MAIN ROUTE		SITE
	DEMAND FLOW	PCT HEAVY		MAIN ROUTE	'DIVER TED'			WITHOUT WORK ZONE	WITH WORK ZONE	
MID-1 AM	296	0.0	2000	296	0	0.45	0	65.8	56.8	44.3
1-2 AM	184	0.0	2000	184	0	0.44	0	66.0	57.1	44.8
2-3 AM	155	0.0	2000	155	0	0.44	0	66.1	57.2	44.8
3-4 AM	118	0.0	2000	118	0	0.43	0	66.1	57.3	45.0
4-5 AM	190	0.0	2000	190	0	0.44	0	66.0	57.1	44.7
5-6 AM	313	0.0	2000	313	0	0.45	0	65.8	56.7	44.2
6-7 AM	582	0.0	2000	582	0	0.48	0	65.3	55.9	43.2
7-8 AM	963	0.0	2000	963	0	0.52	0	64.6	54.8	41.8
8-9 AM	1418	0.0	OFF	1418	0	0.00	0	63.7	63.7	63.7
9-10 AM	1653	0.0	OFF	1653	0	0.00	0	63.3	63.3	63.3
10-11 AM	1843	0.0	OFF	1843	0	0.00	0	63.0	63.0	63.0
11AM-NOON	1916	0.0	OFF	1916	0	0.00	0	62.8	62.8	62.8
NOON-1PM	1849	0.0	OFF	1849	0	0.00	0	63.0	63.0	63.0
1-2 PM	1810	0.0	OFF	1810	0	0.00	0	63.0	63.0	63.0
2-3 PM	1778	0.0	OFF	1778	0	0.00	0	63.1	63.1	63.1
3-4 PM	1653	0.0	OFF	1653	0	0.00	0	63.3	63.3	63.3
4-5 PM	1582	0.0	OFF	1582	0	0.00	0	63.5	63.5	63.5
5-6 PM	1364	0.0	OFF	1364	0	0.00	0	63.8	63.8	63.8
6-7 PM	1111	0.0	2000	1111	0	0.53	0	64.3	54.3	41.3
7-8 PM	950	0.0	2000	950	0	0.51	0	64.6	54.8	41.9
8-9 PM	884	0.0	2000	884	0	0.51	0	64.7	55.0	42.1
9-10 PM	924	0.0	2000	924	0	0.51	0	64.6	54.9	41.9
10-11 PM	1099	0.0	2000	1099	0	0.53	0	64.3	54.4	41.4
11PM-MID	1199	0.0	2000	1199	0	0.64	0	64.1	52.6	38.5

"OFF" INDICATES NO ROAD WORK (ALL LANES OPEN TO TRAFFIC)

----- SITE BREAKDOWN DELAYS -----	
BREAKDOWN DURATION (MINS)	0
RANGE OF QUEUE DELAY - MIN (VEH-H) MAX	0.0
AV BREAKDOWNS PER DAY	0.00
AV QUEUE DELAY/DAY (VEH-H)	0.0
AV TOTAL DELAY/DAY (VEH-H)	0.0

----- SITE ACCIDENT DELAYS -----	
BREAKDOWN DURATION (MINS)	0
RANGE OF QUEUE DELAY - MIN (VEH-H) MAX	0
AV BREAKDOWNS PER DAY	0
AV QUEUE DELAY/DAY (VEH-H)	0
AV TOTAL DELAY/DAY (VEH-H)	0

AVERAGE ACCIDENT NUMBERS (PIA/DAY)	
MAIN ROUTE WITHOUT WORKS	0.0127
MAIN ROUTE WITH WORKS	0.0122
'DIVERSION'	0.0000
PIA: Personal Injury Accidents	
IMPACTS ON ROAD USERS	
ROAD USER COSTS PER DAY	\$1,128
CONGESTED HOURS PER DAY*	0

*Delays Exceeding User-Specified Maximum

**USH 41: STH 76 TO USH 45 (WINNEBAGO COUNTY)
NIGHTTIME CLOSURE
NO DIVERSION ROUTE (MAX QUEUE METHOD)**

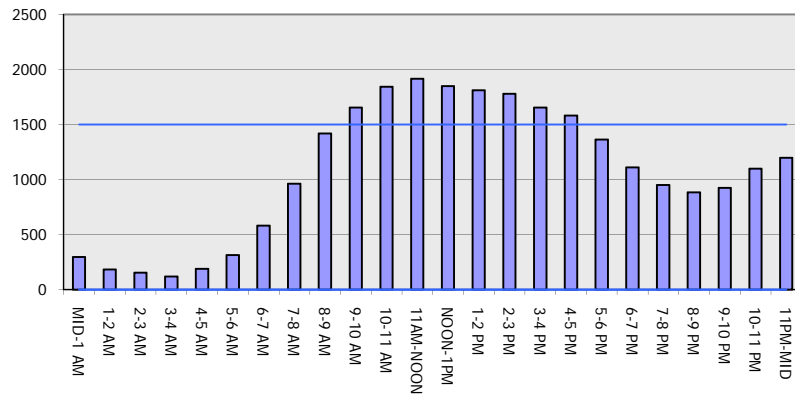
AUGUST

Analyzed for 2009
Construction Season

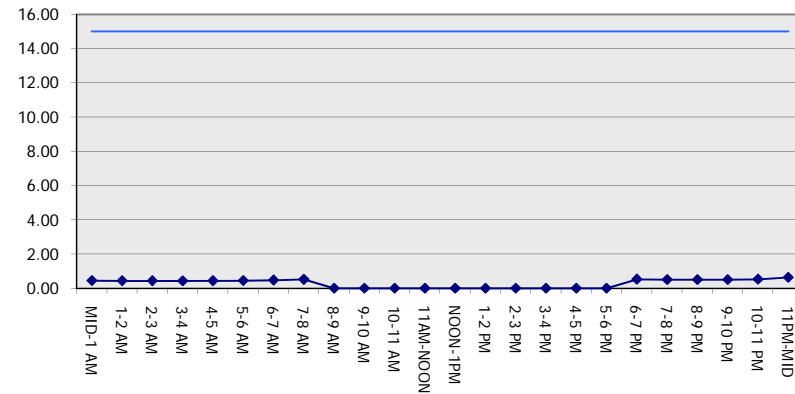
GRAPHICAL REPRESENTATION OF TRAFFIC MODEL INPUT AND OUTPUT

SATURDAY SOUTHBOUND DIRECTION

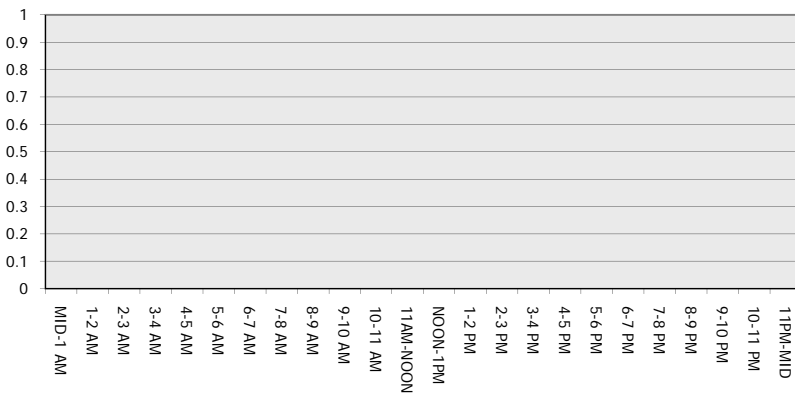
Main Route - Traffic Demand (Vehicles Per Hour)



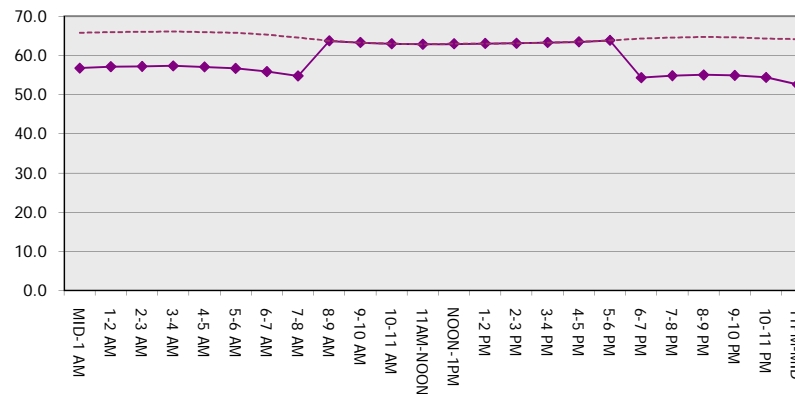
Main Route Average Delay Per Vehicle (Minutes)



Main Route - Average Queue Length (Vehicles)



Main Route - Average Speed (MPH)



USH 41: STH 76 TO USH 45 (WINNEBAGO COUNTY) NIGHTTIME CLOSURE NO DIVERSION ROUTE (MAX QUEUE METHOD)	AUGUST
	Analyzed for 2009 Construction Season

SUMMARY OF TRAFFIC MODEL OUTPUT

SATURDAY NORTHBOUND DIRECTION

TIME OF DAY	FLOWS AND CAPACITY IN VEH/HR							AVERAGE SPEEDS IN MPH		
	MAIN ROUTE		SITE CAPA CITY	FLOW		AV.DEL PER VEH (MINS)	AVERAGE QUEUE (VEH)	MAIN ROUTE		SITE
	DEMAND FLOW	PCT HEAVY		MAIN ROUTE	'DIVER TED'			WITHOUT WORK ZONE	WITH WORK ZONE	
MID-1 AM	355	0.0	2000	355	0	0.46	0	65.7	56.6	44.1
1-2 AM	249	0.0	2000	249	0	0.45	0	66.0	56.9	44.5
2-3 AM	160	0.0	2000	160	0	0.44	0	66.1	57.2	44.8
3-4 AM	153	0.0	2000	153	0	0.44	0	66.1	57.2	44.9
4-5 AM	174	0.0	2000	174	0	0.44	0	66.1	57.1	44.8
5-6 AM	337	0.0	2000	337	0	0.46	0	65.8	56.6	44.2
6-7 AM	498	0.0	2000	498	0	0.47	0	65.5	56.1	43.5
7-8 AM	826	0.0	2000	826	0	0.50	0	64.8	55.2	42.3
8-9 AM	1180	0.0	OFF	1180	0	0.00	0	64.2	64.2	64.2
9-10 AM	1619	0.0	OFF	1619	0	0.00	0	63.3	63.3	63.3
10-11 AM	2156	0.0	OFF	2156	0	0.00	0	62.3	62.3	62.3
11AM-NOON	2357	0.0	OFF	2357	0	0.00	0	62.0	62.0	62.0
NOON-1PM	2547	0.0	OFF	2547	0	0.00	0	60.4	60.4	60.4
1-2 PM	2612	0.0	OFF	2612	0	0.00	0	59.7	59.7	59.7
2-3 PM	2590	0.0	OFF	2590	0	0.00	0	60.0	60.0	60.0
3-4 PM	2576	0.0	OFF	2576	0	0.00	0	60.1	60.1	60.1
4-5 PM	2414	0.0	OFF	2414	0	0.00	0	61.8	61.8	61.8
5-6 PM	2160	0.0	OFF	2160	0	0.00	0	62.3	62.3	62.3
6-7 PM	1610	0.0	2000	1610	0	1.17	0	63.4	45.3	28.7
7-8 PM	1186	0.0	2000	1186	0	0.62	0	64.1	52.9	38.9
8-9 PM	1046	0.0	2000	1046	0	0.52	0	64.5	54.5	41.5
9-10 PM	891	0.0	2000	891	0	0.51	0	64.7	55.0	42.0
10-11 PM	737	0.0	2000	737	0	0.49	0	65.0	55.5	42.6
11PM-MID	514	0.0	2000	514	0	0.47	0	65.5	56.1	43.5

"OFF" INDICATES NO ROAD WORK (ALL LANES OPEN TO TRAFFIC)

----- SITE BREAKDOWN DELAYS -----	
BREAKDOWN DURATION (MINS)	0
RANGE OF QUEUE DELAY - MIN	0.0
(VEH-H) MAX	0.0
AV BREAKDOWNS PER DAY	0.00
AV QUEUE DELAY/DAY (VEH-H)	0.0
AV TOTAL DELAY/DAY (VEH-H)	0.0

----- SITE ACCIDENT DELAYS -----	
BREAKDOWN DURATION (MINS)	0
RANGE OF QUEUE DELAY - MIN	0
(VEH-H) MAX	0
AV BREAKDOWNS PER DAY	0
AV QUEUE DELAY/DAY (VEH-H)	0
AV TOTAL DELAY/DAY (VEH-H)	0

AVERAGE ACCIDENT NUMBERS (PIA/DAY)	
MAIN ROUTE WITHOUT WORKS	0.0153
MAIN ROUTE WITH WORKS	0.0147
'DIVERSION'	0.0000

PIA: Personal Injury Accidents

ECONOMIC IMPACT ON ROAD USERS	
ROAD USER COSTS PER DAY	\$1,328
CONGESTED HOURS PER DAY*	0

*Delays Exceeding User-Specified Maximum

**USH 41: STH 76 TO USH 45 (WINNEBAGO COUNTY)
NIGHTTIME CLOSURE
NO DIVERSION ROUTE (MAX QUEUE METHOD)**

AUGUST
Analyzed for 2009
Construction Season

GRAPHICAL REPRESENTATION OF TRAFFIC MODEL INPUT AND OUTPUT
SATURDAY NORTHBOUND DIRECTION

