

USH 41: 9TH AVE TO STH 44 (WINNEBAGO COUNTY) NIGHTTIME CLOSURE NO DIVERSION ROUTE (MAX QUEUE METHOD)	OCTOBER
	Analyzed for 2009 Construction Season

SUMMARY OF TRAFFIC MODEL OUTPUT

SUNDAY SOUTHBOUND DIRECTION

TIME OF DAY	FLOWS AND CAPACITY IN VEH/HR						AVERAGE SPEEDS IN MPH			
	MAIN ROUTE		SITE CAPA CITY	FLOW		AV.DEL PER VEH (MINS)	AVERAGE QUEUE (VEH)	MAIN ROUTE		SITE
	DEMAND FLOW	PCT HEAVY		MAIN ROUTE	'DIVER TED'			WITHOUT WORK ZONE	WITH WORK ZONE	
MID-1 AM	277	0.0	1500	277	0	0.45	0	65.9	48.7	44.4
1-2 AM	171	0.0	1500	171	0	0.44	0	66.1	49.1	44.8
2-3 AM	149	0.0	1500	149	0	0.44	0	66.1	49.2	44.9
3-4 AM	125	0.0	1500	125	0	0.43	0	66.1	49.2	45.0
4-5 AM	136	0.0	1500	136	0	0.44	0	66.1	49.2	45.0
5-6 AM	211	0.0	1500	211	0	0.44	0	66.0	48.9	44.6
6-7 AM	336	0.0	1500	336	0	0.46	0	65.8	48.4	44.2
7-8 AM	489	0.0	1500	489	0	0.47	0	65.5	47.9	43.5
8-9 AM	791	0.0	1500	791	0	0.50	0	64.9	46.8	42.4
9-10 AM	1194	0.0	OFF	1194	0	0.00	0	64.1	64.1	64.1
10-11 AM	1765	0.0	OFF	1765	0	0.00	0	63.1	63.1	63.1
11AM-NOON	2154	0.0	OFF	2154	0	0.00	0	62.3	62.3	62.3
NOON-1PM	2266	0.0	OFF	2266	0	0.00	0	62.2	62.2	62.2
1-2 PM	2312	0.0	OFF	2312	0	0.00	0	62.1	62.1	62.1
2-3 PM	2601	0.0	OFF	2601	0	0.00	0	59.9	59.9	59.9
3-4 PM	2664	0.0	OFF	2664	0	0.00	0	59.2	59.2	59.2
4-5 PM	2622	0.0	OFF	2622	0	0.00	0	59.6	59.6	59.6
5-6 PM	2375	0.0	OFF	2375	0	0.00	0	62.0	62.0	62.0
6-7 PM	1966	0.0	OFF	1966	0	0.00	0	62.7	62.7	62.7
7-8 PM	1429	0.0	1499	1429	0	1.20	9	63.7	33.3	33.1
8-9 PM	910	0.0	1500	910	0	0.51	0	64.7	46.4	42.0
9-10 PM	591	0.0	1500	591	0	0.48	0	65.3	47.5	43.2
10-11 PM	436	0.0	1500	436	0	0.46	0	65.6	48.1	43.8
11PM-MID	407	0.0	1500	407	0	0.46	0	65.6	48.2	43.8

"OFF" INDICATES NO ROAD WORK (ALL LANES OPEN TO TRAFFIC)

----- SITE BREAKDOWN DELAYS -----	
BREAKDOWN DURATION (MINS)	0
RANGE OF QUEUE DELAY - MIN (VEH-H) MAX	0.0
AV BREAKDOWNS PER DAY	0.00
AV QUEUE DELAY/DAY (VEH-H)	0.0
AV TOTAL DELAY/DAY (VEH-H)	0.0

----- SITE ACCIDENT DELAYS -----	
BREAKDOWN DURATION (MINS)	0
RANGE OF QUEUE DELAY - MIN (VEH-H) MAX	0
AV BREAKDOWNS PER DAY	0
AV QUEUE DELAY/DAY (VEH-H)	0
AV TOTAL DELAY/DAY (VEH-H)	0

AVERAGE ACCIDENT NUMBERS (PIA/DAY)	
MAIN ROUTE WITHOUT WORKS	0.0063
MAIN ROUTE WITH WORKS	0.0059
'DIVERSION'	0.0000
<small>PIA: Personal Injury Accidents</small>	
IMPACTS ON ROAD USERS	
ROAD USER COSTS PER DAY	\$998
CONGESTED HOURS PER DAY*	0

*Delays Exceeding User-Specified Maximum

**USH 41: 9TH AVE TO STH 44 (WINNEBAGO COUNTY)
NIGHTTIME CLOSURE
NO DIVERSION ROUTE (MAX QUEUE METHOD)**

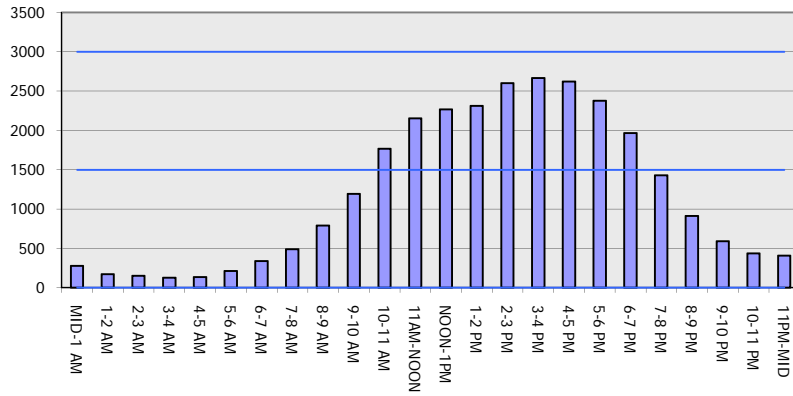
OCTOBER

Analyzed for 2009
Construction Season

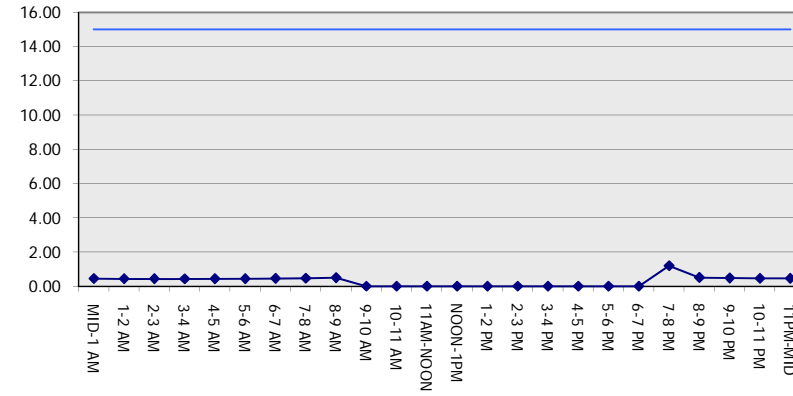
GRAPHICAL REPRESENTATION OF TRAFFIC MODEL INPUT AND OUTPUT

SUNDAY SOUTHBOUND DIRECTION

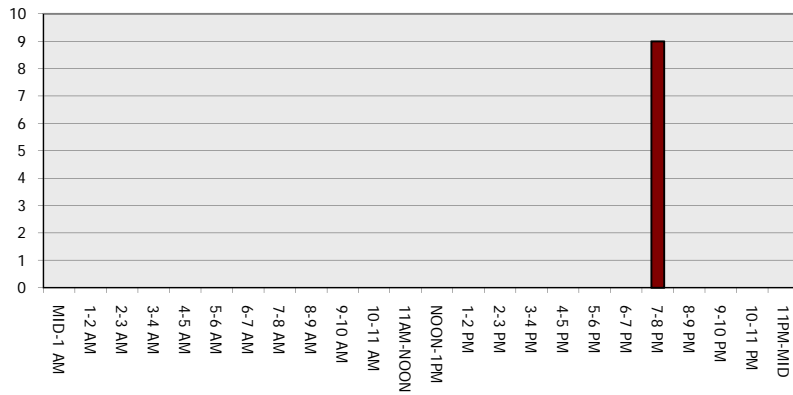
Main Route - Traffic Demand (Vehicles Per Hour)



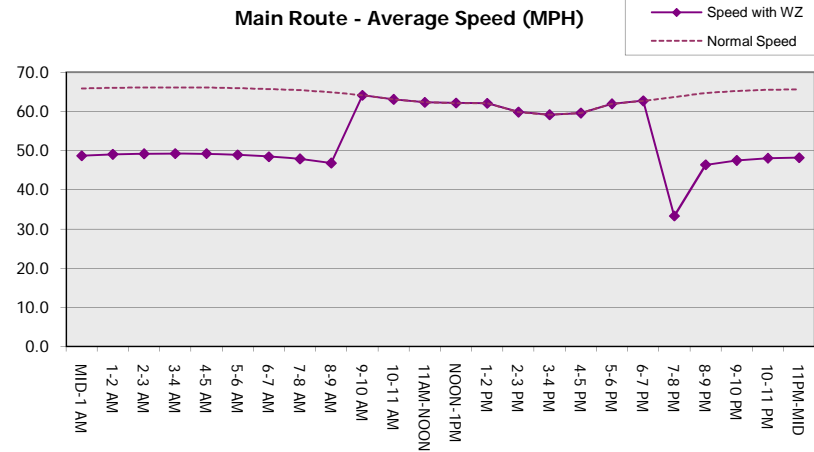
Main Route Average Delay Per Vehicle (Minutes)



Main Route - Average Queue Length (Vehicles)



Main Route - Average Speed (MPH)



USH 41: 9TH AVE TO STH 44 (WINNEBAGO COUNTY) NIGHTTIME CLOSURE NO DIVERSION ROUTE (MAX QUEUE METHOD)	OCTOBER
	Analyzed for 2009 Construction Season

SUMMARY OF TRAFFIC MODEL OUTPUT

SUNDAY NORTHBOUND DIRECTION

TIME OF DAY	FLOWS AND CAPACITY IN VEH/HR							AVERAGE SPEEDS IN MPH		
	MAIN ROUTE		SITE CAPA CITY	FLOW		AV.DEL PER VEH (MINS)	AVERAGE QUEUE (VEH)	MAIN ROUTE		SITE
	DEMAND FLOW	PCT HEAVY		MAIN ROUTE	'DIVER TED'			WITHOUT WORK ZONE	WITH WORK ZONE	
MID-1 AM	229	0.0	1500	229	0	0.44	0	66.0	48.9	44.6
1-2 AM	153	0.0	1500	153	0	0.44	0	66.1	49.1	44.9
2-3 AM	114	0.0	1500	114	0	0.43	0	66.2	49.3	45.0
3-4 AM	85	0.0	1500	85	0	0.43	0	66.2	49.4	45.1
4-5 AM	96	0.0	1500	96	0	0.43	0	66.2	49.4	45.1
5-6 AM	217	0.0	1500	217	0	0.44	0	66.0	48.9	44.6
6-7 AM	261	0.0	1500	261	0	0.45	0	65.9	48.7	44.5
7-8 AM	417	0.0	1500	417	0	0.46	0	65.6	48.2	43.8
8-9 AM	914	0.0	1500	914	0	0.51	0	64.7	46.4	42.0
9-10 AM	1247	0.0	OFF	1247	0	0.00	0	64.1	64.1	64.1
10-11 AM	1390	0.0	OFF	1390	0	0.00	0	63.8	63.8	63.8
11AM-NOON	1562	0.0	OFF	1562	0	0.00	0	63.5	63.5	63.5
NOON-1PM	1707	0.0	OFF	1707	0	0.00	0	63.2	63.2	63.2
1-2 PM	1709	0.0	OFF	1709	0	0.00	0	63.2	63.2	63.2
2-3 PM	1763	0.0	OFF	1763	0	0.00	0	63.1	63.1	63.1
3-4 PM	1844	0.0	OFF	1844	0	0.00	0	63.0	63.0	63.0
4-5 PM	1747	0.0	OFF	1747	0	0.00	0	63.2	63.2	63.2
5-6 PM	1575	0.0	OFF	1575	0	0.00	0	63.5	63.5	63.5
6-7 PM	1350	0.0	OFF	1350	0	0.00	0	63.9	63.9	63.9
7-8 PM	1090	0.0	1500	1090	0	0.53	0	64.3	45.8	41.4
8-9 PM	727	0.0	1500	727	0	0.49	0	65.0	47.1	42.7
9-10 PM	539	0.0	1500	539	0	0.47	0	65.4	47.7	43.3
10-11 PM	389	0.0	1500	389	0	0.46	0	65.6	48.3	43.9
11PM-MID	221	0.0	1500	221	0	0.44	0	66.0	48.9	44.6

"OFF" INDICATES NO ROAD WORK (ALL LANES OPEN TO TRAFFIC)

----- SITE BREAKDOWN DELAYS -----	
BREAKDOWN DURATION (MINS)	0
RANGE OF QUEUE DELAY - MIN (VEH-H) MAX	0.0
AV BREAKDOWNS PER DAY	0.00
AV QUEUE DELAY/DAY (VEH-H)	0.0
AV TOTAL DELAY/DAY (VEH-H)	0.0

----- SITE ACCIDENT DELAYS -----	
BREAKDOWN DURATION (MINS)	0
RANGE OF QUEUE DELAY - MIN (VEH-H) MAX	0
AV BREAKDOWNS PER DAY	0
AV QUEUE DELAY/DAY (VEH-H)	0
AV TOTAL DELAY/DAY (VEH-H)	0

AVERAGE ACCIDENT NUMBERS (PIA/DAY)	
MAIN ROUTE WITHOUT WORKS	0.0047
MAIN ROUTE WITH WORKS	0.0044
'DIVERSION'	0.0000

PIA: Personal Injury Accidents

ECONOMIC IMPACT ON ROAD USERS	
ROAD USER COSTS PER DAY	\$639
CONGESTED HOURS PER DAY*	0

*Delays Exceeding User-Specified Maximum

**USH 41: 9TH AVE TO STH 44 (WINNEBAGO COUNTY)
NIGHTTIME CLOSURE
NO DIVERSION ROUTE (MAX QUEUE METHOD)**

OCTOBER

Analyzed for 2009
Construction Season

GRAPHICAL REPRESENTATION OF TRAFFIC MODEL INPUT AND OUTPUT
SUNDAY NORTHBOUND DIRECTION

