

USH 41: 9TH AVE TO STH 44 (WINNEBAGO COUNTY) NIGHTTIME CLOSURE NO DIVERSION ROUTE (MAX QUEUE METHOD)	OCTOBER
	Analyzed for 2009 Construction Season

SUMMARY OF TRAFFIC MODEL OUTPUT

MON-THUR SOUTHBOUND DIRECTION

TIME OF DAY	FLOWS AND CAPACITY IN VEH/HR						AVERAGE SPEEDS IN MPH			
	MAIN ROUTE		SITE CAPA CITY	FLOW		AV.DEL PER VEH (MINS)	AVERAGE QUEUE (VEH)	MAIN ROUTE		SITE
	DEMAND FLOW	PCT HEAVY		MAIN ROUTE	'DIVER TED'			WITHOUT WORK ZONE	WITH WORK ZONE	
MID-1 AM	232	0.0	1500	232	0	0.44	0	66.0	48.9	44.5
1-2 AM	179	0.0	1500	179	0	0.44	0	66.1	49.1	44.8
2-3 AM	134	0.0	1500	134	0	0.44	0	66.1	49.2	45.0
3-4 AM	206	0.0	1500	206	0	0.44	0	66.0	48.9	44.6
4-5 AM	407	0.0	1500	407	0	0.46	0	65.6	48.2	43.8
5-6 AM	968	0.0	OFF	968	0	0.00	0	64.6	64.6	64.6
6-7 AM	1722	0.0	OFF	1722	0	0.00	0	63.2	63.2	63.2
7-8 AM	2397	0.0	OFF	2397	0	0.00	0	61.9	61.9	61.9
8-9 AM	1824	0.0	OFF	1824	0	0.00	0	63.0	63.0	63.0
9-10 AM	1537	0.0	OFF	1537	0	0.00	0	63.5	63.5	63.5
10-11 AM	1522	0.0	OFF	1522	0	0.00	0	63.5	63.5	63.5
11AM-NOON	1593	0.0	OFF	1593	0	0.00	0	63.4	63.4	63.4
NOON-1PM	1650	0.0	OFF	1650	0	0.00	0	63.3	63.3	63.3
1-2 PM	1743	0.0	OFF	1743	0	0.00	0	63.2	63.2	63.2
2-3 PM	2001	0.0	OFF	2001	0	0.00	0	62.7	62.7	62.7
3-4 PM	2271	0.0	OFF	2271	0	0.00	0	62.2	62.2	62.2
4-5 PM	2469	0.0	OFF	2469	0	0.00	0	61.2	61.2	61.2
5-6 PM	2128	0.0	OFF	2128	0	0.00	0	62.4	62.4	62.4
6-7 PM	1345	0.0	OFF	1345	0	0.00	0	63.9	63.9	63.9
7-8 PM	932	0.0	1500	932	0	0.51	0	64.6	46.3	41.9
8-9 PM	805	0.0	1500	805	0	0.50	0	64.9	46.8	42.4
9-10 PM	634	0.0	1500	634	0	0.48	0	65.2	47.4	43.0
10-11 PM	474	0.0	1500	474	0	0.47	0	65.5	47.9	43.6
11PM-MID	294	0.0	1500	294	0	0.45	0	65.8	48.6	44.3

"OFF" INDICATES NO ROAD WORK (ALL LANES OPEN TO TRAFFIC)

----- SITE BREAKDOWN DELAYS -----	
BREAKDOWN DURATION (MINS)	0
RANGE OF QUEUE DELAY - MIN (VEH-H) MAX	0.0
AV BREAKDOWNS PER DAY	0.00
AV QUEUE DELAY/DAY (VEH-H)	0.0
AV TOTAL DELAY/DAY (VEH-H)	0.0

----- SITE ACCIDENT DELAYS -----	
BREAKDOWN DURATION (MINS)	0
RANGE OF QUEUE DELAY - MIN (VEH-H) MAX	0
AV BREAKDOWNS PER DAY	0
AV QUEUE DELAY/DAY (VEH-H)	0
AV TOTAL DELAY/DAY (VEH-H)	0

AVERAGE ACCIDENT NUMBERS (PIA/DAY)	
MAIN ROUTE WITHOUT WORKS	0.0066
MAIN ROUTE WITH WORKS	0.0063
'DIVERSION'	0.0000
<small>PIA: Personal Injury Accidents</small>	
IMPACTS ON ROAD USERS	
ROAD USER COSTS PER DAY	\$422
CONGESTED HOURS PER DAY*	0

*Delays Exceeding User-Specified Maximum

**USH 41: 9TH AVE TO STH 44 (WINNEBAGO COUNTY)
NIGHTTIME CLOSURE
NO DIVERSION ROUTE (MAX QUEUE METHOD)**

OCTOBER

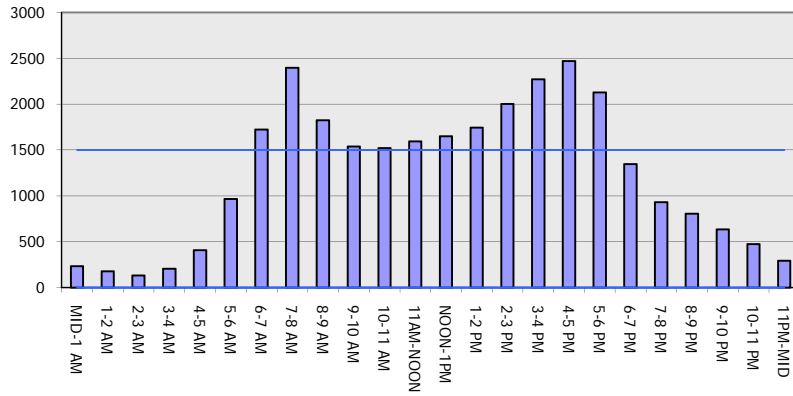
Analyzed for 2009
Construction Season

GRAPHICAL REPRESENTATION OF TRAFFIC MODEL INPUT AND OUTPUT

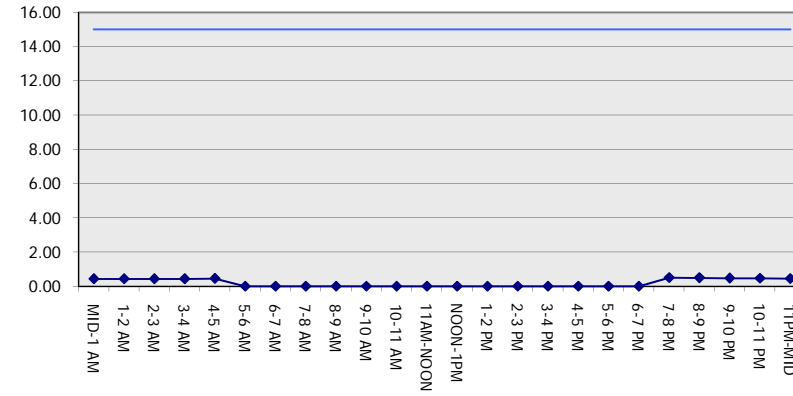
MON-THUR

SOUTHBOUND DIRECTION

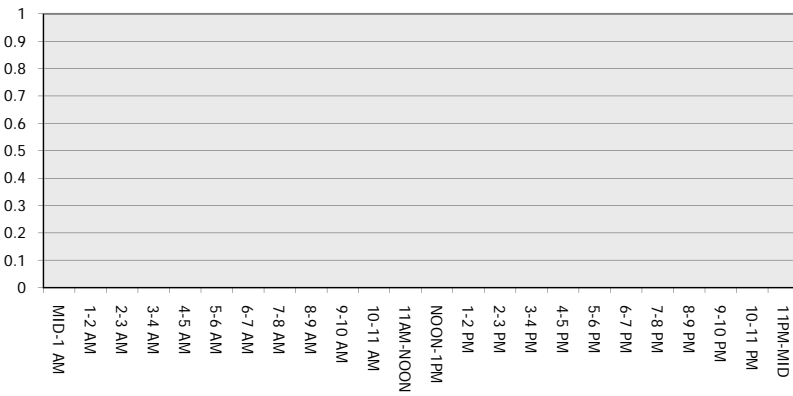
Main Route - Traffic Demand (Vehicles Per Hour)



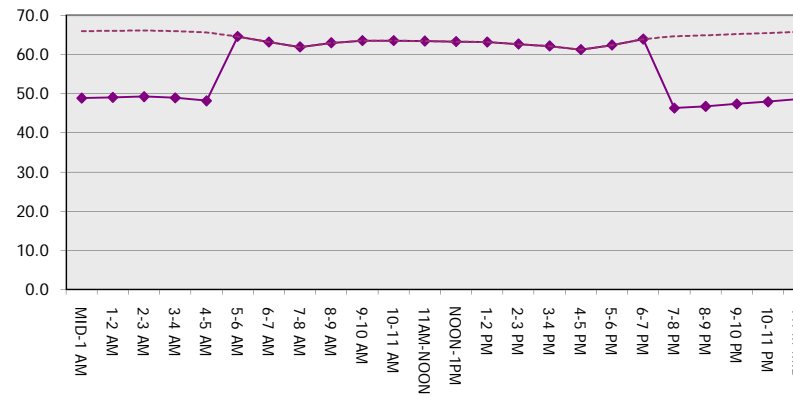
Main Route Average Delay Per Vehicle (Minutes)



Main Route - Average Queue Length (Vehicles)



Main Route - Average Speed (MPH)



USH 41: 9TH AVE TO STH 44 (WINNEBAGO COUNTY) NIGHTTIME CLOSURE NO DIVERSION ROUTE (MAX QUEUE METHOD)	OCTOBER
	Analyzed for 2009 Construction Season

SUMMARY OF TRAFFIC MODEL OUTPUT

MON-THUR NORTHBOUND DIRECTION

TIME OF DAY	FLOWS AND CAPACITY IN VEH/HR						AVERAGE SPEEDS IN MPH			
	MAIN ROUTE		SITE CAPA CITY	FLOW		AV.DEL PER VEH (MINS)	AVERAGE QUEUE (VEH)	MAIN ROUTE		SITE
	DEMAND FLOW	PCT HEAVY		MAIN ROUTE	'DIVER TED'			WITHOUT WORK ZONE	WITH WORK ZONE	
MID-1 AM	165	0.0	1500	165	0	0.44	0	66.1	49.1	44.8
1-2 AM	126	0.0	1500	126	0	0.43	0	66.1	49.2	45.0
2-3 AM	121	0.0	1500	121	0	0.43	0	66.1	49.2	45.0
3-4 AM	160	0.0	1500	160	0	0.44	0	66.1	49.1	44.8
4-5 AM	281	0.0	1500	281	0	0.45	0	65.9	48.7	44.3
5-6 AM	789	0.0	OFF	789	0	0.00	0	64.9	64.9	64.9
6-7 AM	1467	0.0	OFF	1467	0	0.00	0	63.7	63.7	63.7
7-8 AM	2088	0.0	OFF	2088	0	0.00	0	62.5	62.5	62.5
8-9 AM	1487	0.0	OFF	1487	0	0.00	0	63.6	63.6	63.6
9-10 AM	1405	0.0	OFF	1405	0	0.00	0	63.8	63.8	63.8
10-11 AM	1408	0.0	OFF	1408	0	0.00	0	63.8	63.8	63.8
11AM-NOON	1444	0.0	OFF	1444	0	0.00	0	63.7	63.7	63.7
NOON-1PM	1496	0.0	OFF	1496	0	0.00	0	63.6	63.6	63.6
1-2 PM	1561	0.0	OFF	1561	0	0.00	0	63.5	63.5	63.5
2-3 PM	1771	0.0	OFF	1771	0	0.00	0	63.1	63.1	63.1
3-4 PM	1991	0.0	OFF	1991	0	0.00	0	62.7	62.7	62.7
4-5 PM	2280	0.0	OFF	2280	0	0.00	0	62.2	62.2	62.2
5-6 PM	2113	0.0	OFF	2113	0	0.00	0	62.5	62.5	62.5
6-7 PM	1397	0.0	OFF	1397	0	0.00	0	63.8	63.8	63.8
7-8 PM	924	0.0	1500	924	0	0.51	0	64.6	46.4	41.9
8-9 PM	752	0.0	1500	752	0	0.50	0	65.0	46.9	42.5
9-10 PM	590	0.0	1500	590	0	0.48	0	65.3	47.5	43.2
10-11 PM	432	0.0	1500	432	0	0.46	0	65.6	48.1	43.8
11PM-MID	297	0.0	1500	297	0	0.45	0	65.8	48.6	44.3

"OFF" INDICATES NO ROAD WORK (ALL LANES OPEN TO TRAFFIC)

----- SITE BREAKDOWN DELAYS -----	
BREAKDOWN DURATION (MINS)	0
RANGE OF QUEUE DELAY - MIN (VEH-H) MAX	0.0
AV BREAKDOWNS PER DAY	0.00
AV QUEUE DELAY/DAY (VEH-H)	0.0
AV TOTAL DELAY/DAY (VEH-H)	0.0

----- SITE ACCIDENT DELAYS -----	
BREAKDOWN DURATION (MINS)	0
RANGE OF QUEUE DELAY - MIN (VEH-H) MAX	0
AV BREAKDOWNS PER DAY	0
AV QUEUE DELAY/DAY (VEH-H)	0
AV TOTAL DELAY/DAY (VEH-H)	0

AVERAGE ACCIDENT NUMBERS (PIA/DAY)	
MAIN ROUTE WITHOUT WORKS	0.0059
MAIN ROUTE WITH WORKS	0.0057
'DIVERSION'	0.0000

PIA: Personal Injury Accidents

ECONOMIC IMPACT ON ROAD USERS	
ROAD USER COSTS PER DAY	\$377
CONGESTED HOURS PER DAY*	0

*Delays Exceeding User-Specified Maximum

**USH 41: 9TH AVE TO STH 44 (WINNEBAGO COUNTY)
NIGHTTIME CLOSURE
NO DIVERSION ROUTE (MAX QUEUE METHOD)**

OCTOBER

Analyzed for 2009
Construction Season

**GRAPHICAL REPRESENTATION OF TRAFFIC MODEL INPUT AND OUTPUT
MON-THUR NORTHBOUND DIRECTION**

