

USH 41: 9TH AVE TO STH 44 (WINNEBAGO COUNTY) NIGHTTIME CLOSURE NO DIVERSION ROUTE (MAX QUEUE METHOD)	AUGUST
	Analyzed for 2009 Construction Season

SUMMARY OF TRAFFIC MODEL OUTPUT

SUNDAY SOUTHBOUND DIRECTION

TIME OF DAY	FLOWS AND CAPACITY IN VEH/HR						AVERAGE SPEEDS IN MPH				
	MAIN ROUTE		SITE CAPA CITY	FLOW		AV.DEL PER VEH (MINS)	AVERAGE QUEUE (VEH)	MAIN ROUTE		SITE	
	DEMAND FLOW	PCT HEAVY		MAIN ROUTE	'DIVER TED'			WITHOUT WORK ZONE	WITH WORK ZONE		
MID-1 AM	661	0.0	1500	661	0	0.49	0	65.1	47.3	42.9	
1-2 AM	213	0.0	1500	213	0	0.44	0	66.0	48.9	44.6	
2-3 AM	153	0.0	1500	153	0	0.44	0	66.1	49.1	44.9	
3-4 AM	132	0.0	1500	132	0	0.44	0	66.1	49.2	45.0	
4-5 AM	133	0.0	1500	133	0	0.44	0	66.1	49.2	45.0	
5-6 AM	195	0.0	1500	195	0	0.44	0	66.0	49.0	44.7	
6-7 AM	331	0.0	1500	331	0	0.45	0	65.8	48.5	44.2	
7-8 AM	593	0.0	1500	593	0	0.48	0	65.3	47.5	43.2	
8-9 AM	1084	0.0	1499	1084	0	0.58	0	64.3	44.5	39.9	
9-10 AM	1634	0.0	OFF	1634	0	0.00	0	63.3	63.3	63.3	
10-11 AM	2380	0.0	OFF	2380	0	0.00	0	62.0	62.0	62.0	
11AM-NOON	2733	0.0	OFF	2733	0	0.00	0	58.5	58.5	58.5	
NOON-1PM	2720	0.0	OFF	2720	0	0.00	0	58.6	58.6	58.6	
1-2 PM	2788	0.0	OFF	2788	0	0.00	0	57.9	57.9	57.9	
2-3 PM	2826	0.0	OFF	2826	0	0.00	0	57.6	57.6	57.6	
3-4 PM	2808	0.0	OFF	2808	0	0.00	0	57.8	57.8	57.8	
4-5 PM	2760	0.0	OFF	2760	0	0.00	0	58.2	58.2	58.2	
5-6 PM	2499	0.0	OFF	2499	0	0.00	0	60.9	60.9	60.9	
6-7 PM	2043	0.0	OFF	2043	0	0.00	0	62.6	62.6	62.6	
7-8 PM	1608	0.0	1499	1608	0	3.83	80	63.4	16.9	30.8	
8-9 PM	1203	0.0	1499	1203	0	1.29	30	64.1	32.4	37.1	
9-10 PM	761	0.0	1500	761	0	0.50	0	65.0	46.9	42.5	
10-11 PM	516	0.0	1500	516	0	0.47	0	65.5	47.8	43.5	
11PM-MID	265	0.0	1500	265	0	0.45	0	65.9	48.7	44.4	

"OFF" INDICATES NO ROAD WORK (ALL LANES OPEN TO TRAFFIC)

----- SITE BREAKDOWN DELAYS -----	
BREAKDOWN DURATION (MINS)	0
RANGE OF QUEUE DELAY - MIN (VEH-H) MAX	0.0
AV BREAKDOWNS PER DAY	0.00
AV QUEUE DELAY/DAY (VEH-H)	0.0
AV TOTAL DELAY/DAY (VEH-H)	0.0

----- SITE ACCIDENT DELAYS -----	
BREAKDOWN DURATION (MINS)	0
RANGE OF QUEUE DELAY - MIN (VEH-H) MAX	0
AV BREAKDOWNS PER DAY	0
AV QUEUE DELAY/DAY (VEH-H)	0
AV TOTAL DELAY/DAY (VEH-H)	0

AVERAGE ACCIDENT NUMBERS (PIA/DAY)	
MAIN ROUTE WITHOUT WORKS	0.0074
MAIN ROUTE WITH WORKS	0.0068
'DIVERSION'	0.0000
PIA: Personal Injury Accidents	
IMPACTS ON ROAD USERS	
ROAD USER COSTS PER DAY	\$2,758
CONGESTED HOURS PER DAY*	0

*Delays Exceeding User-Specified Maximum

**USH 41: 9TH AVE TO STH 44 (WINNEBAGO COUNTY)
NIGHTTIME CLOSURE
NO DIVERSION ROUTE (MAX QUEUE METHOD)**

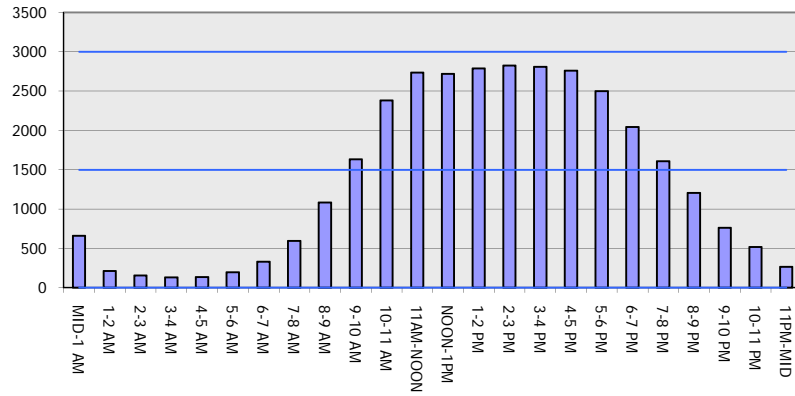
AUGUST

Analyzed for 2009
Construction Season

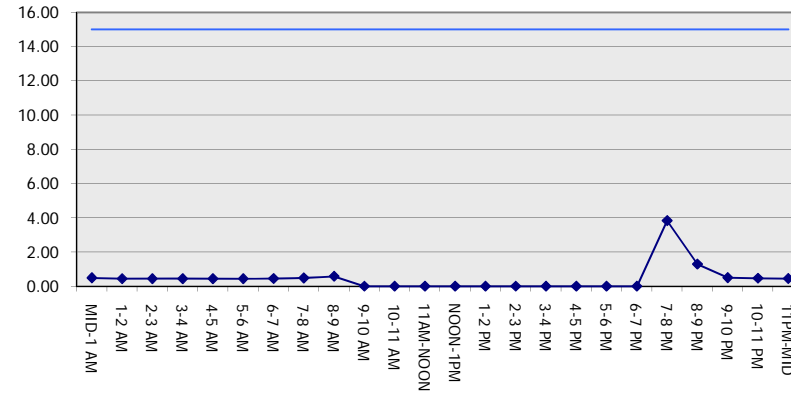
GRAPHICAL REPRESENTATION OF TRAFFIC MODEL INPUT AND OUTPUT

SUNDAY SOUTHBOUND DIRECTION

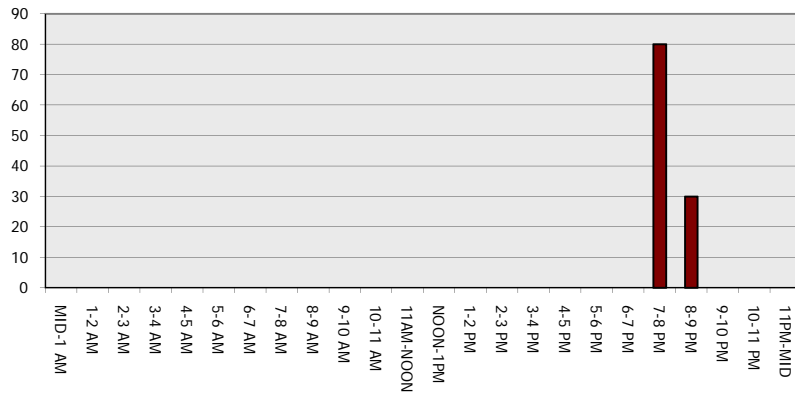
Main Route - Traffic Demand (Vehicles Per Hour)



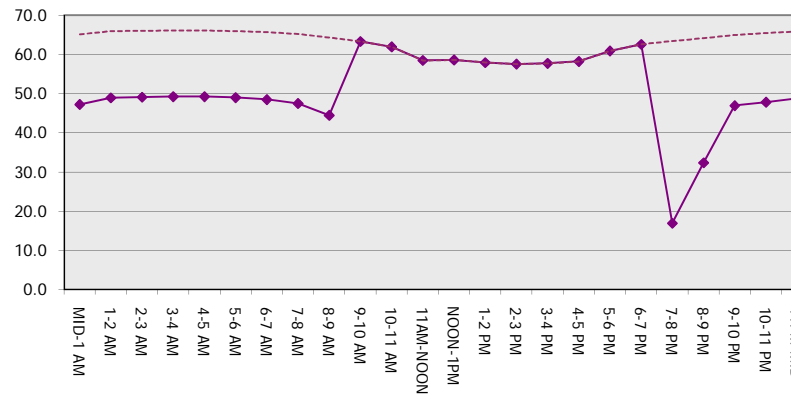
Main Route Average Delay Per Vehicle (Minutes)



Main Route - Average Queue Length (Vehicles)



Main Route - Average Speed (MPH)



USH 41: 9TH AVE TO STH 44 (WINNEBAGO COUNTY) NIGHTTIME CLOSURE NO DIVERSION ROUTE (MAX QUEUE METHOD)	AUGUST
	Analyzed for 2009 Construction Season

SUMMARY OF TRAFFIC MODEL OUTPUT

SUNDAY NORTHBOUND DIRECTION

TIME OF DAY	FLOWS AND CAPACITY IN VEH/HR							AVERAGE SPEEDS IN MPH		
	MAIN ROUTE		SITE CAPA CITY	FLOW		AV.DEL PER VEH (MINS)	AVERAGE QUEUE (VEH)	MAIN ROUTE		SITE
	DEMAND FLOW	PCT HEAVY		MAIN ROUTE	'DIVER TED'			WITHOUT WORK ZONE	WITH WORK ZONE	
MID-1 AM	250	0.0	1500	250	0	0.45	0	65.9	48.8	44.5
1-2 AM	163	0.0	1500	163	0	0.44	0	66.1	49.1	44.8
2-3 AM	119	0.0	1500	119	0	0.43	0	66.1	49.3	45.0
3-4 AM	76	0.0	1500	76	0	0.43	0	66.3	49.4	45.2
4-5 AM	89	0.0	1500	89	0	0.43	0	66.2	49.4	45.1
5-6 AM	247	0.0	1500	247	0	0.45	0	66.0	48.8	44.5
6-7 AM	255	0.0	1500	255	0	0.45	0	65.9	48.7	44.5
7-8 AM	346	0.0	1500	346	0	0.46	0	65.8	48.4	44.1
8-9 AM	574	0.0	1500	574	0	0.48	0	65.3	47.6	43.2
9-10 AM	959	0.0	OFF	959	0	0.00	0	64.6	64.6	64.6
10-11 AM	1337	0.0	OFF	1337	0	0.00	0	63.9	63.9	63.9
11AM-NOON	1662	0.0	OFF	1662	0	0.00	0	63.3	63.3	63.3
NOON-1PM	1791	0.0	OFF	1791	0	0.00	0	63.0	63.0	63.0
1-2 PM	1859	0.0	OFF	1859	0	0.00	0	62.9	62.9	62.9
2-3 PM	1825	0.0	OFF	1825	0	0.00	0	63.0	63.0	63.0
3-4 PM	1820	0.0	OFF	1820	0	0.00	0	63.0	63.0	63.0
4-5 PM	1824	0.0	OFF	1824	0	0.00	0	63.0	63.0	63.0
5-6 PM	1744	0.0	OFF	1744	0	0.00	0	63.2	63.2	63.2
6-7 PM	1472	0.0	OFF	1472	0	0.00	0	63.7	63.7	63.7
7-8 PM	1218	0.0	1500	1218	0	0.66	0	64.1	42.6	37.9
8-9 PM	1017	0.0	1500	1017	0	0.52	0	64.5	46.0	41.6
9-10 PM	758	0.0	1500	758	0	0.50	0	65.0	46.9	42.5
10-11 PM	517	0.0	1500	517	0	0.47	0	65.4	47.8	43.5
11PM-MID	321	0.0	1500	321	0	0.45	0	65.8	48.5	44.2

"OFF" INDICATES NO ROAD WORK (ALL LANES OPEN TO TRAFFIC)

----- SITE BREAKDOWN DELAYS -----	
BREAKDOWN DURATION (MINS)	0
RANGE OF QUEUE DELAY - MIN (VEH-H) MAX	0.0
AV BREAKDOWNS PER DAY	0.00
AV QUEUE DELAY/DAY (VEH-H)	0.0
AV TOTAL DELAY/DAY (VEH-H)	0.0

----- SITE ACCIDENT DELAYS -----	
BREAKDOWN DURATION (MINS)	0
RANGE OF QUEUE DELAY - MIN (VEH-H) MAX	0
AV BREAKDOWNS PER DAY	0
AV QUEUE DELAY/DAY (VEH-H)	0
AV TOTAL DELAY/DAY (VEH-H)	0

AVERAGE ACCIDENT NUMBERS (PIA/DAY)	
MAIN ROUTE WITHOUT WORKS	0.0049
MAIN ROUTE WITH WORKS	0.0046
'DIVERSION'	0.0000

PIA: Personal Injury Accidents

ECONOMIC IMPACT ON ROAD USERS	
ROAD USER COSTS PER DAY	\$829
CONGESTED HOURS PER DAY*	0

*Delays Exceeding User-Specified Maximum

**USH 41: 9TH AVE TO STH 44 (WINNEBAGO COUNTY)
NIGHTTIME CLOSURE
NO DIVERSION ROUTE (MAX QUEUE METHOD)**

AUGUST
Analyzed for 2009
Construction Season

GRAPHICAL REPRESENTATION OF TRAFFIC MODEL INPUT AND OUTPUT
SUNDAY NORTHBOUND DIRECTION

