

USH 41: BREEZEWOOD LN/BELL ST TO STH 76 (WINNEBAGO COUNTY) NIGHTTIME CLOSURE NO DIVERSION ROUTE (MAX QUEUE METHOD)	OCTOBER
	Analyzed for 2009 Construction Season

SUMMARY OF TRAFFIC MODEL OUTPUT

FRIDAY SOUTHBOUND DIRECTION

TIME OF DAY	FLOWS AND CAPACITY IN VEH/HR						AVERAGE SPEEDS IN MPH			
	MAIN ROUTE		SITE CAPA CITY	FLOW		AV.DEL PER VEH (MINS)	AVERAGE QUEUE (VEH)	MAIN ROUTE		SITE
	DEMAND FLOW	PCT HEAVY		MAIN ROUTE	'DIVER TED'			WITHOUT WORK ZONE	WITH WORK ZONE	
MID-1 AM	224	0.0	1500	224	0	0.44	0	66.0	60.3	44.6
1-2 AM	157	0.0	1500	157	0	0.44	0	66.1	60.5	44.8
2-3 AM	195	0.0	1500	195	0	0.44	0	66.0	60.4	44.7
3-4 AM	205	0.0	1500	205	0	0.44	0	66.0	60.4	44.6
4-5 AM	346	0.0	1500	346	0	0.46	0	65.8	60.0	44.1
5-6 AM	834	0.0	OFF	834	0	0.00	0	64.8	64.8	64.8
6-7 AM	1656	0.0	OFF	1656	0	0.00	0	63.3	63.3	63.3
7-8 AM	2454	0.0	OFF	2454	0	0.00	0	61.4	61.4	61.4
8-9 AM	1977	0.0	OFF	1977	0	0.00	0	62.7	62.7	62.7
9-10 AM	1644	0.0	OFF	1644	0	0.00	0	63.3	63.3	63.3
10-11 AM	1793	0.0	OFF	1793	0	0.00	0	63.0	63.0	63.0
11AM-NOON	1931	0.0	OFF	1931	0	0.00	0	62.8	62.8	62.8
NOON-1PM	2153	0.0	OFF	2153	0	0.00	0	62.3	62.3	62.3
1-2 PM	2344	0.0	OFF	2344	0	0.00	0	62.0	62.0	62.0
2-3 PM	2532	0.0	OFF	2532	0	0.00	0	60.5	60.5	60.5
3-4 PM	2773	0.0	OFF	2773	0	0.00	0	58.1	58.1	58.1
4-5 PM	3004	0.0	OFF	3004	0	0.00	0	55.7	55.7	55.7
5-6 PM	2744	0.0	OFF	2744	0	0.00	0	58.4	58.4	58.4
6-7 PM	1889	0.0	OFF	1889	0	0.00	0	62.8	62.8	62.8
7-8 PM	1324	0.0	1500	1324	0	0.80	0	63.9	55.0	34.8
8-9 PM	1147	0.0	1500	1147	0	0.57	0	64.3	57.5	40.2
9-10 PM	1032	0.0	1500	1032	0	0.52	0	64.5	58.2	41.5
10-11 PM	809	0.0	1500	809	0	0.50	0	64.9	58.7	42.4
11PM-MID	519	0.0	1500	519	0	0.47	0	65.4	59.5	43.4

"OFF" INDICATES NO ROAD WORK (ALL LANES OPEN TO TRAFFIC)

----- SITE BREAKDOWN DELAYS -----	
BREAKDOWN DURATION (MINS)	0
RANGE OF QUEUE DELAY - MIN (VEH-H) MAX	0.0
AV BREAKDOWNS PER DAY	0.00
AV QUEUE DELAY/DAY (VEH-H)	0.0
AV TOTAL DELAY/DAY (VEH-H)	0.0

----- SITE ACCIDENT DELAYS -----	
BREAKDOWN DURATION (MINS)	0
RANGE OF QUEUE DELAY - MIN (VEH-H) MAX	0
AV BREAKDOWNS PER DAY	0
AV QUEUE DELAY/DAY (VEH-H)	0
AV TOTAL DELAY/DAY (VEH-H)	0

AVERAGE ACCIDENT NUMBERS (PIA/DAY)	
MAIN ROUTE WITHOUT WORKS	0.0295
MAIN ROUTE WITH WORKS	0.0291
'DIVERSION'	0.0000
<small>PIA: Personal Injury Accidents</small>	
IMPACTS ON ROAD USERS	
ROAD USER COSTS PER DAY	\$787
CONGESTED HOURS PER DAY*	0

*Delays Exceeding User-Specified Maximum

USH 41: BREEZEWOOD LN/BELL ST TO STH 76 (WINNEBAGO COUNTY)
NIGHTTIME CLOSURE
NO DIVERSION ROUTE (MAX QUEUE METHOD)

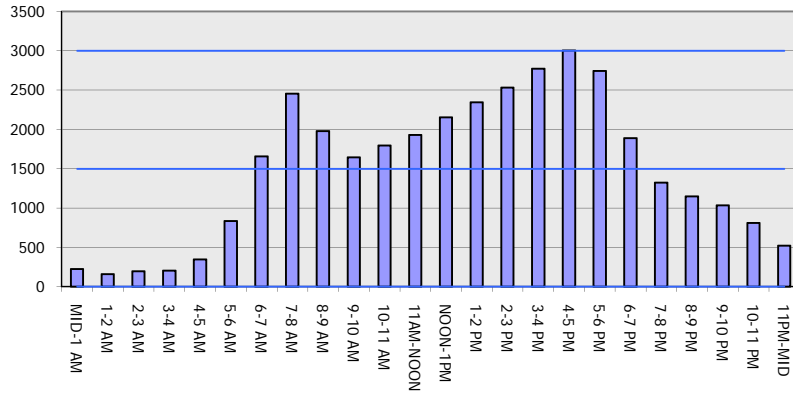
OCTOBER

Analyzed for 2009
 Construction Season

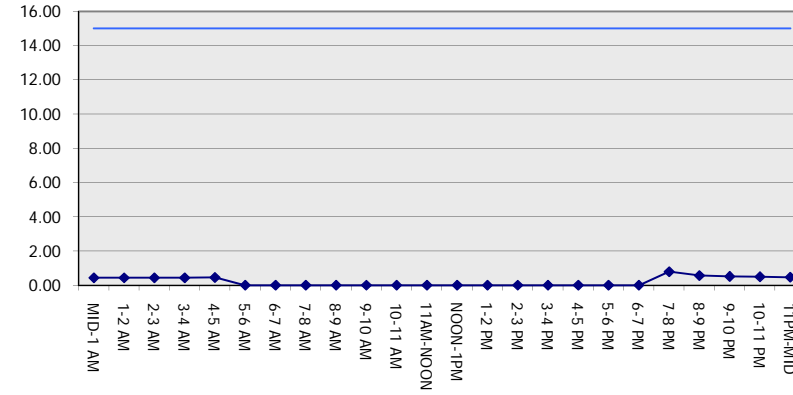
GRAPHICAL REPRESENTATION OF TRAFFIC MODEL INPUT AND OUTPUT

FRIDAY SOUTHBOUND DIRECTION

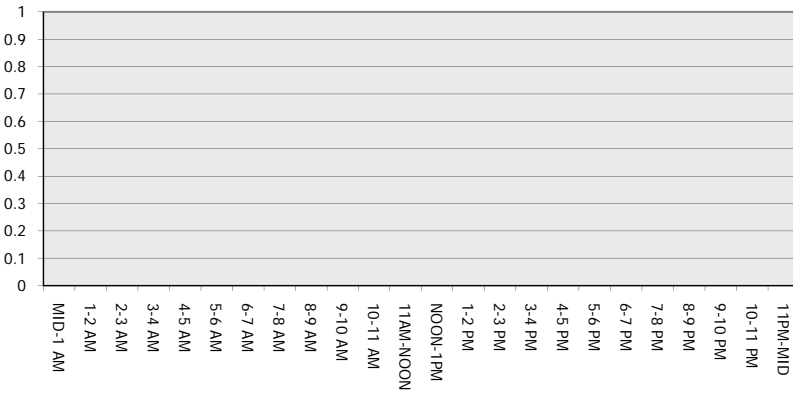
Main Route - Traffic Demand (Vehicles Per Hour)



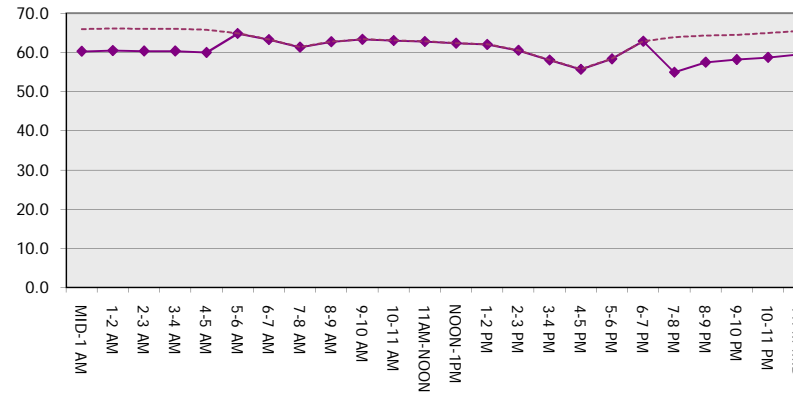
Main Route Average Delay Per Vehicle (Minutes)



Main Route - Average Queue Length (Vehicles)



Main Route - Average Speed (MPH)



USH 41: BREEZEWOOD LN/BELL ST TO STH 76 (WINNEBAGO COUNTY) NIGHTTIME CLOSURE NO DIVERSION ROUTE (MAX QUEUE METHOD)	OCTOBER
	Analyzed for 2009 Construction Season

SUMMARY OF TRAFFIC MODEL OUTPUT

FRIDAY NORTHBOUND DIRECTION

TIME OF DAY	FLOWS AND CAPACITY IN VEH/HR						AVERAGE SPEEDS IN MPH			
	MAIN ROUTE		SITE CAPA CITY	FLOW		AV.DEL PER VEH (MINS)	AVERAGE QUEUE (VEH)	MAIN ROUTE		SITE
	DEMAND FLOW	PCT HEAVY		MAIN ROUTE	'DIVER TED'			WITHOUT WORK ZONE	WITH WORK ZONE	
MID-1 AM	249	0.0	1500	249	0	0.45	0	66.0	60.2	44.5
1-2 AM	196	0.0	1500	196	0	0.44	0	66.0	60.4	44.7
2-3 AM	175	0.0	1500	175	0	0.44	0	66.1	60.4	44.8
3-4 AM	174	0.0	1500	174	0	0.44	0	66.1	60.4	44.8
4-5 AM	308	0.0	1500	308	0	0.45	0	65.8	60.1	44.3
5-6 AM	774	0.0	OFF	774	0	0.00	0	65.0	65.0	65.0
6-7 AM	1482	0.0	OFF	1482	0	0.00	0	63.7	63.7	63.7
7-8 AM	2529	0.0	OFF	2529	0	0.00	0	60.6	60.6	60.6
8-9 AM	1856	0.0	OFF	1856	0	0.00	0	62.9	62.9	62.9
9-10 AM	1821	0.0	OFF	1821	0	0.00	0	63.0	63.0	63.0
10-11 AM	2024	0.0	OFF	2024	0	0.00	0	62.6	62.6	62.6
11AM-NOON	2268	0.0	OFF	2268	0	0.00	0	62.2	62.2	62.2
NOON-1PM	2308	0.0	OFF	2308	0	0.00	0	62.1	62.1	62.1
1-2 PM	2466	0.0	OFF	2466	0	0.00	0	61.2	61.2	61.2
2-3 PM	2691	0.0	OFF	2691	0	0.00	0	58.9	58.9	58.9
3-4 PM	3133	0.0	OFF	3133	0	0.00	0	54.4	54.4	54.4
4-5 PM	3311	0.0	OFF	3311	0	0.00	0	52.6	52.6	52.6
5-6 PM	3179	0.0	OFF	3179	0	0.00	0	54.0	54.0	54.0
6-7 PM	2388	0.0	OFF	2388	0	0.00	0	61.9	61.9	61.9
7-8 PM	1648	0.0	1499	1648	0	5.00	112	63.3	31.4	30.8
8-9 PM	1155	0.0	1499	1155	0	1.79	41	64.2	46.9	37.6
9-10 PM	1003	0.0	1500	1003	0	0.52	0	64.5	58.2	41.7
10-11 PM	710	0.0	1500	710	0	0.49	0	65.1	59.0	42.7
11PM-MID	523	0.0	1500	523	0	0.47	0	65.4	59.5	43.4

"OFF" INDICATES NO ROAD WORK (ALL LANES OPEN TO TRAFFIC)

----- SITE BREAKDOWN DELAYS -----	
BREAKDOWN DURATION (MINS)	0
RANGE OF QUEUE DELAY - MIN	0.0
(VEH-H) MAX	0.0
AV BREAKDOWNS PER DAY	0.00
AV QUEUE DELAY/DAY (VEH-H)	0.0
AV TOTAL DELAY/DAY (VEH-H)	0.0

----- SITE ACCIDENT DELAYS -----	
BREAKDOWN DURATION (MINS)	0
RANGE OF QUEUE DELAY - MIN	0
(VEH-H) MAX	0
AV BREAKDOWNS PER DAY	0
AV QUEUE DELAY/DAY (VEH-H)	0
AV TOTAL DELAY/DAY (VEH-H)	0

AVERAGE ACCIDENT NUMBERS (PIA/DAY)	
MAIN ROUTE WITHOUT WORKS	0.0318
MAIN ROUTE WITH WORKS	0.0314
'DIVERSION'	0.0000

PIA: Personal Injury Accidents

ECONOMIC IMPACT ON ROAD USERS	
ROAD USER COSTS PER DAY	\$2,756
CONGESTED HOURS PER DAY*	0

*Delays Exceeding User-Specified Maximum

USH 41: BREEZEWOOD LN/BELL ST TO STH 76 (WINNEBAGO COUNTY)
NIGHTTIME CLOSURE
NO DIVERSION ROUTE (MAX QUEUE METHOD)

OCTOBER

Analyzed for 2009
 Construction Season

GRAPHICAL REPRESENTATION OF TRAFFIC MODEL INPUT AND OUTPUT

FRIDAY NORTHBOUND DIRECTION

