

IH 43: STH 42 TO STH 28 (SHEBOYGAN COUNTY) NIGHTTIME CLOSURE DIVERSION ROUTE: STH 28 - CTH TA - STH 23	AUGUST
	Analyzed for 2009 Construction Season

SUMMARY OF TRAFFIC MODEL OUTPUT

FRIDAY SOUTHBOUND DIRECTION

TIME OF DAY	FLOWS AND CAPACITY IN VEH/HR							AVERAGE SPEEDS IN MPH							
	MAIN ROUTE		ALTERNATE ROUTE		SITE CAPA CITY	FLOW MAIN ROUTE	FLOW DIVER -TING	TOTAL DIVN FLOW	AV.DEL PER VEH (MINS)	AVERAGE QUEUE (VEH)	MAIN ROUTE		ALTERNATE ROUTE		
	DEMAND FLOW	PCT HEAVY	NORMAL FLOW	PCT HEAVY							WITHOUT WORK ZN	WITH WORK ZN	SITE	WITHOUT WORK ZN	WITH WORK ZN
MID-1 AM	205	0.0	99	0.0	1500	205	0	99	0.44	0	66.0	55.6	44.6	24.1	24.1
1-2 AM	89	0.0	44	0.0	1500	89	0	44	0.43	0	66.2	56.0	45.1	24.5	24.5
2-3 AM	90	0.0	44	0.0	1500	90	0	44	0.43	0	66.2	56.0	45.1	24.5	24.5
3-4 AM	123	0.0	60	0.0	1500	123	0	60	0.43	0	66.1	55.8	45.0	24.4	24.4
4-5 AM	294	0.0	143	0.0	1500	294	0	143	0.45	0	65.8	55.3	44.3	23.7	23.7
5-6 AM	528	0.0	256	0.0	OFF	528	0	256	0.00	0	65.4	65.4	65.4	22.9	22.9
6-7 AM	980	0.0	475	0.0	OFF	980	0	475	0.00	0	64.6	64.6	64.6	21.2	21.2
7-8 AM	1097	0.0	532	0.0	OFF	1097	0	532	0.00	0	64.3	64.3	64.3	20.7	20.7
8-9 AM	973	0.0	472	0.0	OFF	973	0	472	0.00	0	64.6	64.6	64.6	21.2	21.2
9-10 AM	1051	0.0	509	0.0	OFF	1051	0	509	0.00	0	64.4	64.4	64.4	20.9	20.9
10-11 AM	1101	0.0	534	0.0	OFF	1101	0	534	0.00	0	64.3	64.3	64.3	20.7	20.7
11A-NOON	1207	0.0	585	0.0	OFF	1207	0	585	0.00	0	64.1	64.1	64.1	20.4	20.4
NOON-1PM	1309	0.0	634	0.0	OFF	1309	0	634	0.00	0	64.0	64.0	64.0	20.0	20.0
1-2 PM	1337	0.0	648	0.0	OFF	1337	0	648	0.00	0	63.9	63.9	63.9	19.9	19.9
2-3 PM	1389	0.0	674	0.0	OFF	1389	0	674	0.00	0	63.8	63.8	63.8	19.7	19.7
3-4 PM	1404	0.0	681	0.0	OFF	1404	0	681	0.00	0	63.8	63.8	63.8	19.6	19.6
4-5 PM	1465	0.0	710	0.0	OFF	1465	0	710	0.00	0	63.7	63.7	63.7	19.4	19.4
5-6 PM	1395	0.0	676	0.0	OFF	1395	0	676	0.00	0	63.8	63.8	63.8	19.7	19.7
6-7 PM	1051	0.0	509	0.0	OFF	1051	0	509	0.00	0	64.4	64.4	64.4	20.9	20.9
7-8 PM	757	0.0	366	0.0	1500	757	0	366	0.50	0	65.0	53.8	42.5	22.0	22.0
8-9 PM	571	0.0	277	0.0	1500	571	0	277	0.48	0	65.3	54.4	43.2	22.7	22.7
9-10 PM	487	0.0	235	0.0	1500	487	0	235	0.47	0	65.5	54.7	43.5	23.0	23.0
10-11 PM	361	0.0	175	0.0	1500	361	0	175	0.46	0	65.7	55.1	44.0	23.5	23.5
11PM-MID	246	0.0	119	0.0	1500	246	0	119	0.45	0	66.0	55.5	44.5	23.9	23.9

"OFF" INDICATES NO ROAD WORK (ALL LANES OPEN TO TRAFFIC)

----- SITE BREAKDOWN DELAYS -----	
BREAKDOWN DURATION (MINS)	0
RANGE OF QUEUE DELAY - MIN	0.0
(VEH-H) MAX	0.0
RANGE OF DIVN DELAY - MIN	0.0
(VEH-H) MAX	0.0
AV BREAKDOWNS PER DAY	0.00
AV QUEUE DELAY/DAY (VEH-H)	0.0
AV DIVN DELAY/DAY (VEH-H)	0.0
AV TOTAL DELAY/DAY (VEH-H)	0.0

----- SITE ACCIDENT DELAYS -----	
ACCIDENT DURATION (MINS)	0
RANGE OF QUEUE DELAY - MIN	0.0
(VEH-H) MAX	0.0
RANGE OF DIVN DELAY - MIN	0.0
(VEH-H) MAX	0.0
AV ACCIDENTS PER DAY	0.00
AV QUEUE DELAY/DAY (VEH-H)	0.0
AV DIVN DELAY/DAY (VEH-H)	0.0
AV TOTAL DELAY/DAY (VEH-H)	0.0

AVERAGE ACCIDENT NUMBERS (PIA/DAY)	
MAIN ROUTE WITHOUT WORKS	0.0081
MAIN ROUTE WITH WORKS	0.0079
DIVERSION	0.0422

PIA: Personal Injury Accidents

IMPACTS ON ROAD USERS	
ROAD USER COSTS PER DAY (DOLLARS)	\$329
CONGESTED HOURS PER DAY*	0

*Delays Exceeding 15 Minutes

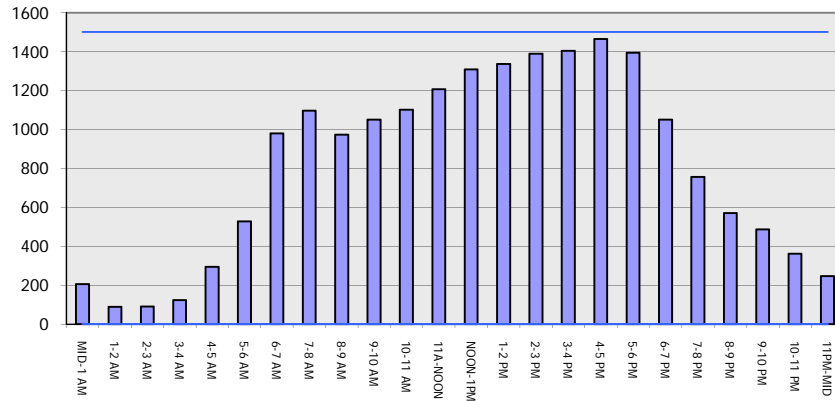
**IH 43: STH 42 TO STH 28 (SHEBOYGAN COUNTY)
NIGHTTIME CLOSURE
DIVERSION ROUTE: STH 28 - CTH TA - STH 23**

AUGUST
Analyzed for 2009
Construction Season

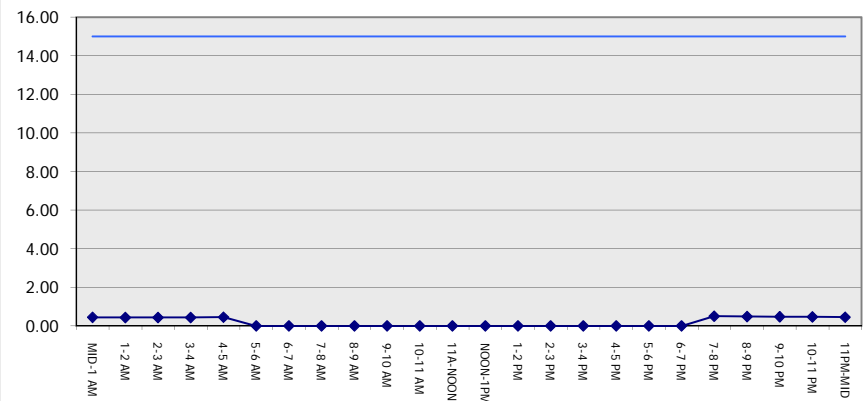
GRAPHICAL REPRESENTATION OF TRAFFIC MODEL INPUT AND OUTPUT

FRIDAY SOUTHBOUND DIRECTION

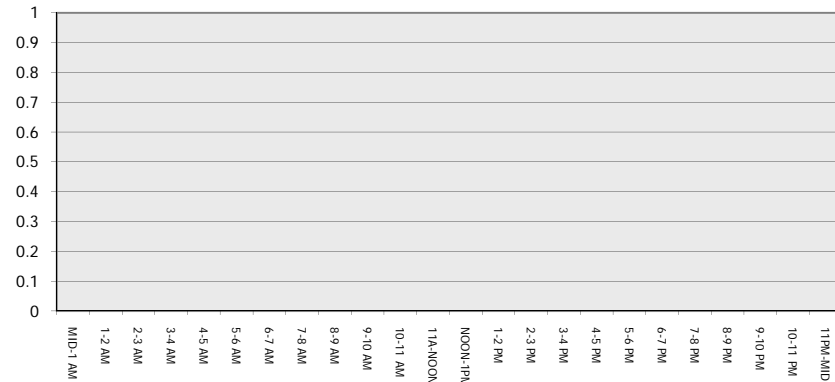
Main Route - Traffic Demand (Vehicles Per Hour)



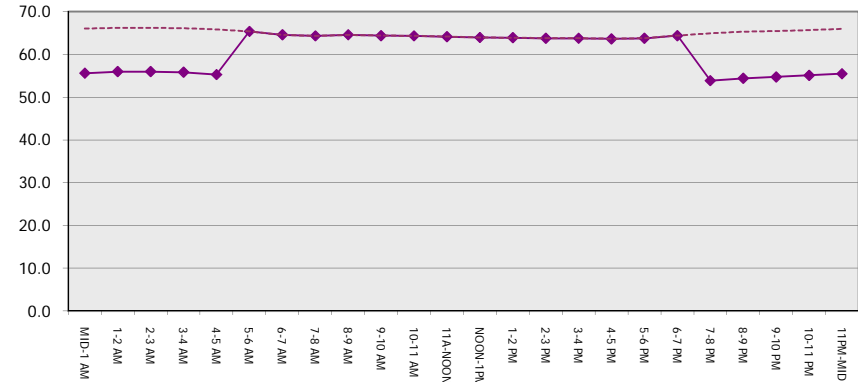
Main Route Average Delay Per Vehicle (Minutes)



Main Route - Average Queue Length (Vehicles)



Main Route - Average Speed (MPH)



IH 43: STH 42 TO STH 28 (SHEBOYGAN COUNTY) NIGHTTIME CLOSURE DIVERSION ROUTE: STH 28 - CTH TA - STH 23	AUGUST
	Analyzed for 2009 Construction Season

SUMMARY OF TRAFFIC MODEL OUTPUT	
FRIDAY	NORTHBOUND DIRECTION

TIME OF DAY	FLOWS AND CAPACITY IN VEH/HR								AVERAGE SPEEDS IN MPH						
	MAIN		DIVERSION		SITE CAPA CITY	FLOW MAIN ROUTE	FLOW DIVER -TING	TOTAL DIVN FLOW	AV.DEL PER VEH (MINS)	AVERAGE QUEUE (VEH)	MAIN ROUTE		SITE	ALTERNATE ROUTE	
	DEMAND FLOW	PCT HEAVY	NORMAL FLOW	PCT HEAVY							WITHOUT WORK ZN	WITH WORK ZN		WITHOUT WORK ZN	WITH WORK ZN
MID-1 AM	241	0.0	117	0.0	1500	241	0	117	0.45	0	66.0	55.5	44.5	24.0	24.0
1-2 AM	157	0.0	76	0.0	1500	157	0	76	0.44	0	66.1	55.8	44.8	24.3	24.3
2-3 AM	111	0.0	54	0.0	1500	111	0	54	0.43	0	66.2	55.9	45.0	24.4	24.4
3-4 AM	121	0.0	59	0.0	1500	121	0	59	0.43	0	66.1	55.8	45.0	24.4	24.4
4-5 AM	196	0.0	95	0.0	1500	196	0	95	0.44	0	66.0	55.6	44.7	24.1	24.1
5-6 AM	348	0.0	168	0.0	OFF	348	0	168	0.00	0	65.8	65.8	65.8	23.5	23.5
6-7 AM	688	0.0	333	0.0	OFF	688	0	333	0.00	0	65.1	65.1	65.1	22.3	22.3
7-8 AM	1004	0.0	487	0.0	OFF	1004	0	487	0.00	0	64.5	64.5	64.5	21.1	21.1
8-9 AM	981	0.0	476	0.0	OFF	981	0	476	0.00	0	64.6	64.6	64.6	21.2	21.2
9-10 AM	1231	0.0	596	0.0	OFF	1231	0	596	0.00	0	64.1	64.1	64.1	20.2	20.2
10-11 AM	1420	0.0	688	0.0	OFF	1420	0	688	0.00	0	63.7	63.7	63.7	19.6	19.6
11A-NOON	1637	0.0	793	0.0	OFF	1637	0	793	0.00	0	63.3	63.3	63.3	18.8	18.8
NOON-1PM	1667	0.0	807	0.0	OFF	1667	0	807	0.00	0	63.3	63.3	63.3	18.6	18.6
1-2 PM	1749	0.0	848	0.0	OFF	1749	0	848	0.00	0	63.2	63.2	63.2	18.3	18.3
2-3 PM	1962	0.0	951	0.0	OFF	1962	0	951	0.00	0	62.7	62.7	62.7	17.6	17.6
3-4 PM	2136	0.0	1035	0.0	OFF	2136	0	1035	0.00	0	62.4	62.4	62.4	16.9	16.9
4-5 PM	2217	0.0	1074	0.0	OFF	2217	0	1074	0.00	0	62.2	62.2	62.2	16.6	16.6
5-6 PM	2120	0.0	1027	0.0	OFF	2120	0	1027	0.00	0	62.4	62.4	62.4	17.0	17.0
6-7 PM	1843	0.0	893	0.0	OFF	1843	0	893	0.00	0	63.0	63.0	63.0	18.0	18.0
7-8 PM	1419	0.0	688	0.0	1499	1419	0	688	0.93	0	63.7	46.1	32.7	19.6	19.6
8-9 PM	1161	0.0	562	0.0	1500	1161	0	562	0.59	0	64.2	51.7	39.7	20.6	20.6
9-10 PM	930	0.0	450	0.0	1500	930	0	450	0.51	0	64.6	53.3	41.9	21.4	21.4
10-11 PM	742	0.0	359	0.0	1500	742	0	359	0.49	0	65.0	53.9	42.6	22.1	22.1
11PM-MID	475	0.0	230	0.0	1500	475	0	230	0.47	0	65.5	54.7	43.6	23.1	23.1

"OFF" INDICATES NO ROAD WORK (ALL LANES OPEN TO TRAFFIC)

----- SITE BREAKDOWN DELAYS -----	
BREAKDOWN DURATION (MINS)	0
RANGE OF QUEUE DELAY - MIN	0.0
(VEH-H) MAX	0.0
RANGE OF DIVN DELAY - MIN	0.0
(VEH-H) MAX	0.0
AV BREAKDOWNS PER DAY	0.00
AV QUEUE DELAY/DAY (VEH-H)	0.0
AV DIVN DELAY/DAY (VEH-H)	0.0
AV TOTAL DELAY/DAY (VEH-H)	0.0

----- SITE ACCIDENT DELAYS -----	
ACCIDENT DURATION (MINS)	0
RANGE OF QUEUE DELAY - MIN	0.0
(VEH-H) MAX	0.0
RANGE OF DIVN DELAY - MIN	0.0
(VEH-H) MAX	0.0
AV ACCIDENTS PER DAY	0.00
AV QUEUE DELAY/DAY (VEH-H)	0.0
AV DIVN DELAY/DAY (VEH-H)	0.0
AV TOTAL DELAY/DAY (VEH-H)	0.0

AVERAGE ACCIDENT NUMBERS (PIA/DAY)	
MAIN ROUTE WITHOUT WORKS	0.0110
MAIN ROUTE WITH WORKS	0.0106
DIVERSION	0.0575

PIA: Personal Injury Accidents

IMPACTS ON ROAD USERS	
ROAD USER COSTS PER DAY (DOLLARS)	\$747
CONGESTED HOURS PER DAY*	0

*Delays Exceeding 15 Minutes

**IH 43: STH 42 TO STH 28 (SHEBOYGAN COUNTY)
NIGHTTIME CLOSURE
DIVERSION ROUTE: STH 28 - CTH TA - STH 23**

AUGUST
Analyzed for 2009
Construction Season

GRAPHICAL REPRESENTATION OF TRAFFIC MODEL INPUT AND OUTPUT
FRIDAY NORTHBOUND DIRECTION

