

<b>STH 441: USH 10 TO CTH CE (OUTAGAMIE COUNTY)</b> <b>NIGHTTIME CLOSURE</b> <b>NO DIVERSION ROUTE (MAX QUEUE METHOD)</b>	<b>OCTOBER</b>
	Analyzed for 2009 Construction Season

**SUMMARY OF TRAFFIC MODEL OUTPUT**

MON-THUR                  SOUTHBOUND DIRECTION

TIME OF DAY	FLOWS AND CAPACITY IN VEH/HR						AVERAGE SPEEDS IN MPH			
	MAIN ROUTE		SITE CAPA CITY	FLOW		AV.DEL PER VEH (MINS)	AVERAGE QUEUE (VEH)	MAIN ROUTE		SITE
	DEMAND FLOW	PCT HEAVY		MAIN ROUTE	'DIVER TED'			WITHOUT WORK ZONE	WITH WORK ZONE	
MID-1 AM	79	0.0	1500	79	0	0.43	0	66.3	58.7	45.1
1-2 AM	64	0.0	1500	64	0	0.43	0	66.3	58.7	45.2
2-3 AM	58	0.0	1500	58	0	0.43	0	66.3	58.7	45.3
3-4 AM	84	0.0	1500	84	0	0.43	0	66.2	58.7	45.1
4-5 AM	259	0.0	1500	259	0	0.45	0	65.9	58.2	44.5
5-6 AM	820	0.0	OFF	820	0	0.00	0	64.8	64.8	64.8
6-7 AM	1526	0.0	OFF	1526	0	0.00	0	63.5	63.5	63.5
7-8 AM	2272	0.0	OFF	2272	0	0.00	0	62.2	62.2	62.2
8-9 AM	1443	0.0	OFF	1443	0	0.00	0	63.7	63.7	63.7
9-10 AM	1010	0.0	OFF	1010	0	0.00	0	64.5	64.5	64.5
10-11 AM	983	0.0	OFF	983	0	0.00	0	64.6	64.6	64.6
11AM-NOON	1055	0.0	OFF	1055	0	0.00	0	64.4	64.4	64.4
NOON-1PM	1129	0.0	OFF	1129	0	0.00	0	64.3	64.3	64.3
1-2 PM	1230	0.0	OFF	1230	0	0.00	0	64.1	64.1	64.1
2-3 PM	1273	0.0	OFF	1273	0	0.00	0	64.0	64.0	64.0
3-4 PM	1496	0.0	OFF	1496	0	0.00	0	63.6	63.6	63.6
4-5 PM	1684	0.0	OFF	1684	0	0.00	0	63.2	63.2	63.2
5-6 PM	1613	0.0	OFF	1613	0	0.00	0	63.4	63.4	63.4
6-7 PM	1068	0.0	OFF	1068	0	0.00	0	64.4	64.4	64.4
7-8 PM	666	0.0	1500	666	0	0.49	0	65.1	57.0	42.9
8-9 PM	548	0.0	1500	548	0	0.48	0	65.4	57.3	43.3
9-10 PM	529	0.0	1500	529	0	0.47	0	65.4	57.4	43.4
10-11 PM	348	0.0	1500	348	0	0.46	0	65.8	57.9	44.1
11PM-MID	183	0.0	1500	183	0	0.44	0	66.1	58.4	44.8

"OFF" INDICATES NO ROAD WORK (ALL LANES OPEN TO TRAFFIC)

*----- SITE BREAKDOWN DELAYS -----*	
BREAKDOWN DURATION (MINS)	0
RANGE OF QUEUE DELAY - MIN (VEH-H) MAX	0.0
AV BREAKDOWNS PER DAY	0.00
AV QUEUE DELAY/DAY (VEH-H)	0.0
AV TOTAL DELAY/DAY (VEH-H)	0.0

*----- SITE ACCIDENT DELAYS -----*	
BREAKDOWN DURATION (MINS)	0
RANGE OF QUEUE DELAY - MIN (VEH-H) MAX	0
AV BREAKDOWNS PER DAY	0
AV QUEUE DELAY/DAY (VEH-H)	0
AV TOTAL DELAY/DAY (VEH-H)	0

AVERAGE ACCIDENT NUMBERS (PIA/DAY)	
MAIN ROUTE WITHOUT WORKS	0.0126
MAIN ROUTE WITH WORKS	0.0124
'DIVERSION'	0.0000
<small>PIA: Personal Injury Accidents</small>	
IMPACTS ON ROAD USERS	
ROAD USER COSTS PER DAY	\$275
CONGESTED HOURS PER DAY*	0

\*Delays Exceeding User-Specified Maximum

**STH 441: USH 10 TO CTH CE (OUTAGAMIE COUNTY)**  
**NIGHTTIME CLOSURE**  
**NO DIVERSION ROUTE (MAX QUEUE METHOD)**

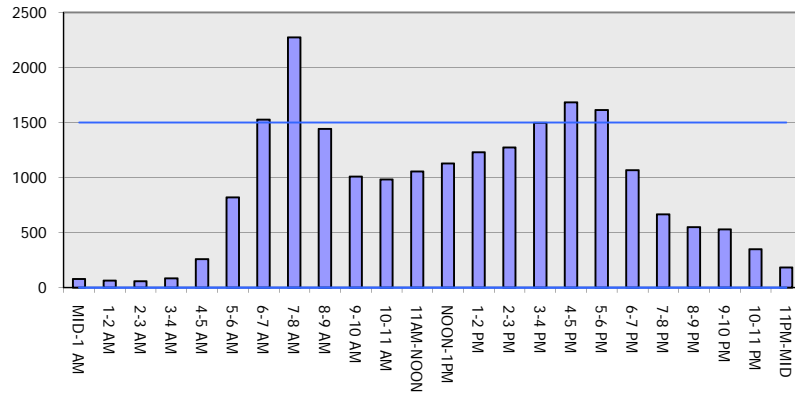
**OCTOBER**

Analyzed for 2009  
 Construction Season

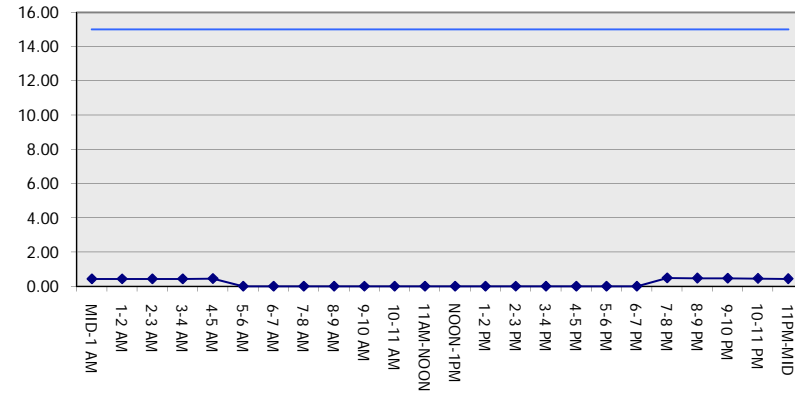
**GRAPHICAL REPRESENTATION OF TRAFFIC MODEL INPUT AND OUTPUT**

**MON-THUR SOUTHBOUND DIRECTION**

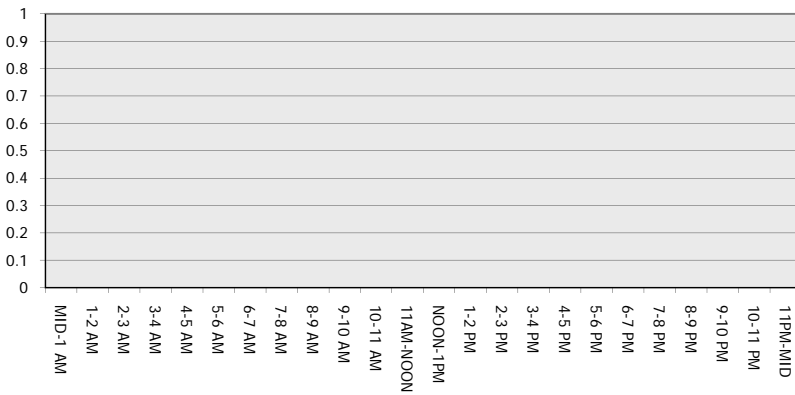
**Main Route - Traffic Demand (Vehicles Per Hour)**



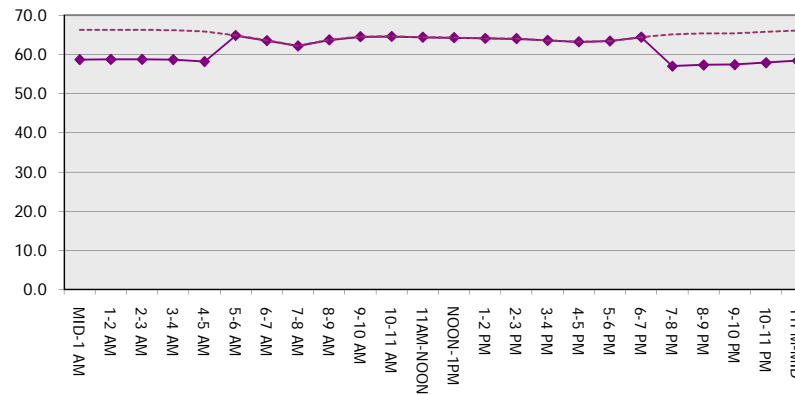
**Main Route Average Delay Per Vehicle (Minutes)**



**Main Route - Average Queue Length (Vehicles)**



**Main Route - Average Speed (MPH)**



<b>STH 441: USH 10 TO CTH CE (OUTAGAMIE COUNTY)</b> <b>NIGHTTIME CLOSURE</b> <b>NO DIVERSION ROUTE (MAX QUEUE METHOD)</b>	<b>OCTOBER</b>
	Analyzed for 2009 Construction Season

**SUMMARY OF TRAFFIC MODEL OUTPUT**

MON-THUR                      NORTHBOUND DIRECTION

TIME OF DAY	FLOWS AND CAPACITY IN VEH/HR							AVERAGE SPEEDS IN MPH		
	MAIN ROUTE		SITE CAPA CITY	FLOW		AV.DEL PER VEH (MINS)	AVERAGE QUEUE (VEH)	MAIN ROUTE		SITE
	DEMAND FLOW	PCT HEAVY		MAIN ROUTE	'DIVER TED'			WITHOUT WORK ZONE	WITH WORK ZONE	
MID-1 AM	188	0.0	1500	188	0	0.44	0	66.0	58.4	44.7
1-2 AM	126	0.0	1500	126	0	0.43	0	66.1	58.6	45.0
2-3 AM	109	0.0	1500	109	0	0.43	0	66.2	58.6	45.0
3-4 AM	59	0.0	1500	59	0	0.43	0	66.3	58.7	45.3
4-5 AM	126	0.0	1500	126	0	0.43	0	66.1	58.6	45.0
5-6 AM	448	0.0	OFF	448	0	0.00	0	65.6	65.6	65.6
6-7 AM	1185	0.0	OFF	1185	0	0.00	0	64.1	64.1	64.1
7-8 AM	1915	0.0	OFF	1915	0	0.00	0	62.8	62.8	62.8
8-9 AM	1366	0.0	OFF	1366	0	0.00	0	63.8	63.8	63.8
9-10 AM	1068	0.0	OFF	1068	0	0.00	0	64.4	64.4	64.4
10-11 AM	1108	0.0	OFF	1108	0	0.00	0	64.3	64.3	64.3
11AM-NOON	1210	0.0	OFF	1210	0	0.00	0	64.1	64.1	64.1
NOON-1PM	1319	0.0	OFF	1319	0	0.00	0	63.9	63.9	63.9
1-2 PM	1346	0.0	OFF	1346	0	0.00	0	63.9	63.9	63.9
2-3 PM	1797	0.0	OFF	1797	0	0.00	0	63.0	63.0	63.0
3-4 PM	2227	0.0	OFF	2227	0	0.00	0	62.2	62.2	62.2
4-5 PM	2695	0.0	OFF	2695	0	0.00	0	58.9	58.9	58.9
5-6 PM	2376	0.0	OFF	2376	0	0.00	0	62.0	62.0	62.0
6-7 PM	1537	0.0	OFF	1537	0	0.00	0	63.5	63.5	63.5
7-8 PM	955	0.0	1500	955	0	0.51	0	64.6	56.2	41.9
8-9 PM	807	0.0	1500	807	0	0.50	0	64.9	56.6	42.4
9-10 PM	645	0.0	1500	645	0	0.48	0	65.2	57.1	43.0
10-11 PM	529	0.0	1500	529	0	0.47	0	65.4	57.4	43.4
11PM-MID	325	0.0	1500	325	0	0.45	0	65.8	57.9	44.2

"OFF" INDICATES NO ROAD WORK (ALL LANES OPEN TO TRAFFIC)

*----- SITE BREAKDOWN DELAYS -----*	
BREAKDOWN DURATION (MINS)	0
RANGE OF QUEUE DELAY - MIN	0.0
(VEH-H) MAX	0.0
AV BREAKDOWNS PER DAY	0.00
AV QUEUE DELAY/DAY (VEH-H)	0.0
AV TOTAL DELAY/DAY (VEH-H)	0.0

*----- SITE ACCIDENT DELAYS -----*	
BREAKDOWN DURATION (MINS)	0
RANGE OF QUEUE DELAY - MIN	0
(VEH-H) MAX	0
AV BREAKDOWNS PER DAY	0
AV QUEUE DELAY/DAY (VEH-H)	0
AV TOTAL DELAY/DAY (VEH-H)	0

AVERAGE ACCIDENT NUMBERS (PIA/DAY)	
MAIN ROUTE WITHOUT WORKS	0.0150
MAIN ROUTE WITH WORKS	0.0147
'DIVERSION'	0.0000

PIA: Personal Injury Accidents

ECONOMIC IMPACT ON ROAD USERS	
ROAD USER COSTS PER DAY	\$387
CONGESTED HOURS PER DAY*	0

\*Delays Exceeding User-Specified Maximum

**STH 441: USH 10 TO CTH CE (OUTAGAMIE COUNTY)  
NIGHTTIME CLOSURE  
NO DIVERSION ROUTE (MAX QUEUE METHOD)**

**OCTOBER**

Analyzed for 2009  
Construction Season

**GRAPHICAL REPRESENTATION OF TRAFFIC MODEL INPUT AND OUTPUT  
MON-THUR NORTHBOUND DIRECTION**

