

STH 441: USH 10 TO CTH CE (OUTAGAMIE COUNTY) NIGHTTIME CLOSURE NO DIVERSION ROUTE (MAX QUEUE METHOD)	OCTOBER
	Analyzed for 2009 Construction Season

SUMMARY OF TRAFFIC MODEL OUTPUT

FRIDAY SOUTHBOUND DIRECTION

TIME OF DAY	FLOWS AND CAPACITY IN VEH/HR						AVERAGE SPEEDS IN MPH				
	MAIN ROUTE		SITE CAPA CITY	FLOW		AV.DEL PER VEH (MINS)	AVERAGE QUEUE (VEH)	MAIN ROUTE		SITE	
	DEMAND FLOW	PCT HEAVY		MAIN ROUTE	'DIVER TED'			WITHOUT WORK ZONE	WITH WORK ZONE		
MID-1 AM	101	0.0	1500	101	0	0.43	0	66.2	58.6	45.1	
1-2 AM	80	0.0	1500	80	0	0.43	0	66.3	58.7	45.1	
2-3 AM	78	0.0	1500	78	0	0.43	0	66.3	58.7	45.2	
3-4 AM	80	0.0	1500	80	0	0.43	0	66.3	58.7	45.1	
4-5 AM	286	0.0	1500	286	0	0.45	0	65.8	58.1	44.3	
5-6 AM	725	0.0	OFF	725	0	0.00	0	65.0	65.0	65.0	
6-7 AM	1419	0.0	OFF	1419	0	0.00	0	63.7	63.7	63.7	
7-8 AM	2184	0.0	OFF	2184	0	0.00	0	62.3	62.3	62.3	
8-9 AM	1432	0.0	OFF	1432	0	0.00	0	63.7	63.7	63.7	
9-10 AM	1043	0.0	OFF	1043	0	0.00	0	64.5	64.5	64.5	
10-11 AM	1068	0.0	OFF	1068	0	0.00	0	64.4	64.4	64.4	
11AM-NOON	1194	0.0	OFF	1194	0	0.00	0	64.1	64.1	64.1	
NOON-1PM	1309	0.0	OFF	1309	0	0.00	0	64.0	64.0	64.0	
1-2 PM	1385	0.0	OFF	1385	0	0.00	0	63.8	63.8	63.8	
2-3 PM	1439	0.0	OFF	1439	0	0.00	0	63.7	63.7	63.7	
3-4 PM	1688	0.0	OFF	1688	0	0.00	0	63.2	63.2	63.2	
4-5 PM	1756	0.0	OFF	1756	0	0.00	0	63.1	63.1	63.1	
5-6 PM	1619	0.0	OFF	1619	0	0.00	0	63.3	63.3	63.3	
6-7 PM	1147	0.0	OFF	1147	0	0.00	0	64.3	64.3	64.3	
7-8 PM	736	0.0	1500	736	0	0.49	0	65.0	56.8	42.6	
8-9 PM	549	0.0	1500	549	0	0.48	0	65.4	57.3	43.3	
9-10 PM	596	0.0	1500	596	0	0.48	0	65.3	57.2	43.2	
10-11 PM	459	0.0	1500	459	0	0.47	0	65.5	57.6	43.7	
11PM-MID	325	0.0	1500	325	0	0.45	0	65.8	57.9	44.2	

"OFF" INDICATES NO ROAD WORK (ALL LANES OPEN TO TRAFFIC)

----- SITE BREAKDOWN DELAYS -----	
BREAKDOWN DURATION (MINS)	0
RANGE OF QUEUE DELAY - MIN (VEH-H) MAX	0.0
AV BREAKDOWNS PER DAY	0.00
AV QUEUE DELAY/DAY (VEH-H)	0.0
AV TOTAL DELAY/DAY (VEH-H)	0.0

----- SITE ACCIDENT DELAYS -----	
BREAKDOWN DURATION (MINS)	0
RANGE OF QUEUE DELAY - MIN (VEH-H) MAX	0
AV BREAKDOWNS PER DAY	0
AV QUEUE DELAY/DAY (VEH-H)	0
AV TOTAL DELAY/DAY (VEH-H)	0

AVERAGE ACCIDENT NUMBERS (PIA/DAY)	
MAIN ROUTE WITHOUT WORKS	0.0134
MAIN ROUTE WITH WORKS	0.0131
'DIVERSION'	0.0000
PIA: Personal Injury Accidents	
IMPACTS ON ROAD USERS	
ROAD USER COSTS PER DAY	\$332
CONGESTED HOURS PER DAY*	0

*Delays Exceeding User-Specified Maximum

**STH 441: USH 10 TO CTH CE (OUTAGAMIE COUNTY)
NIGHTTIME CLOSURE
NO DIVERSION ROUTE (MAX QUEUE METHOD)**

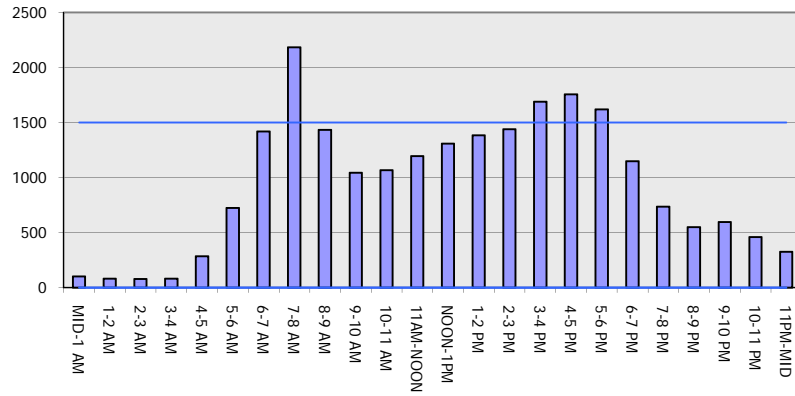
OCTOBER

Analyzed for 2009
Construction Season

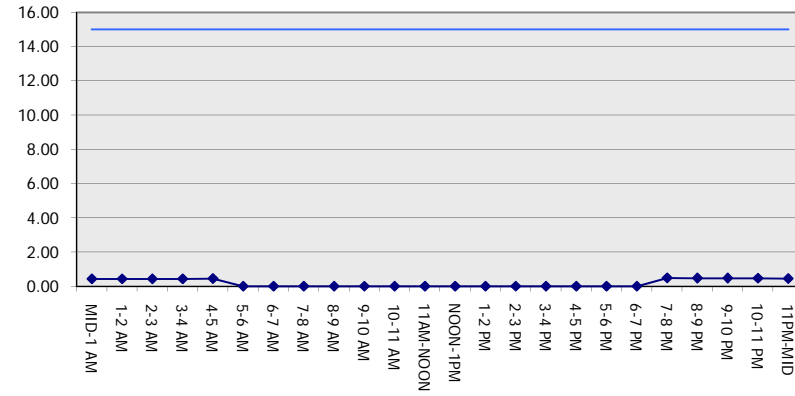
GRAPHICAL REPRESENTATION OF TRAFFIC MODEL INPUT AND OUTPUT

FRIDAY SOUTHBOUND DIRECTION

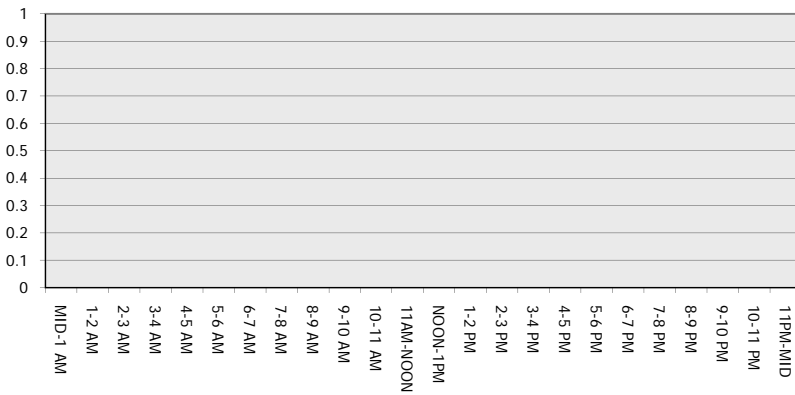
Main Route - Traffic Demand (Vehicles Per Hour)



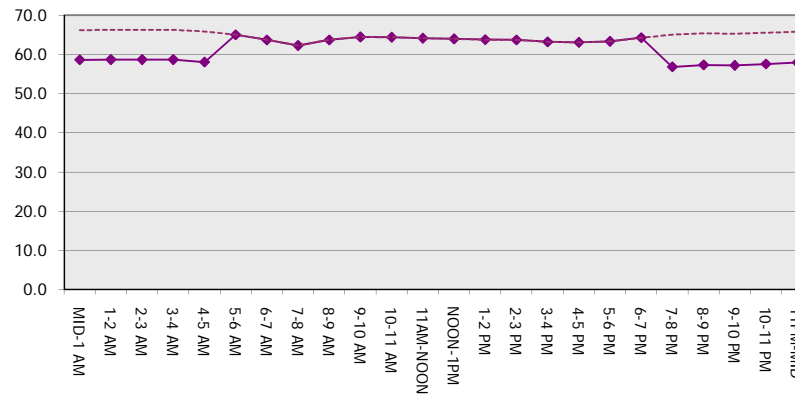
Main Route Average Delay Per Vehicle (Minutes)



Main Route - Average Queue Length (Vehicles)



Main Route - Average Speed (MPH)



STH 441: USH 10 TO CTH CE (OUTAGAMIE COUNTY) NIGHTTIME CLOSURE NO DIVERSION ROUTE (MAX QUEUE METHOD)	OCTOBER
	Analyzed for 2009 Construction Season

SUMMARY OF TRAFFIC MODEL OUTPUT

FRIDAY NORTHBOUND DIRECTION

TIME OF DAY	FLOWS AND CAPACITY IN VEH/HR						AVERAGE SPEEDS IN MPH			
	MAIN ROUTE		SITE CAPA CITY	FLOW		AV.DEL PER VEH (MINS)	AVERAGE QUEUE (VEH)	MAIN ROUTE		SITE
	DEMAND FLOW	PCT HEAVY		MAIN ROUTE	'DIVER TED'			WITHOUT WORK ZONE	WITH WORK ZONE	
MID-1 AM	224	0.0	1500	224	0	0.44	0	66.0	58.2	44.6
1-2 AM	147	0.0	1500	147	0	0.44	0	66.1	58.5	44.9
2-3 AM	117	0.0	1500	117	0	0.43	0	66.1	58.6	45.0
3-4 AM	67	0.0	1500	67	0	0.43	0	66.3	58.7	45.2
4-5 AM	132	0.0	1500	132	0	0.44	0	66.1	58.6	45.0
5-6 AM	450	0.0	OFF	450	0	0.00	0	65.6	65.6	65.6
6-7 AM	1156	0.0	OFF	1156	0	0.00	0	64.2	64.2	64.2
7-8 AM	1826	0.0	OFF	1826	0	0.00	0	63.0	63.0	63.0
8-9 AM	1414	0.0	OFF	1414	0	0.00	0	63.8	63.8	63.8
9-10 AM	1149	0.0	OFF	1149	0	0.00	0	64.3	64.3	64.3
10-11 AM	1247	0.0	OFF	1247	0	0.00	0	64.1	64.1	64.1
11AM-NOON	1448	0.0	OFF	1448	0	0.00	0	63.7	63.7	63.7
NOON-1PM	1526	0.0	OFF	1526	0	0.00	0	63.5	63.5	63.5
1-2 PM	1628	0.0	OFF	1628	0	0.00	0	63.3	63.3	63.3
2-3 PM	2071	0.0	OFF	2071	0	0.00	0	62.5	62.5	62.5
3-4 PM	2413	0.0	OFF	2413	0	0.00	0	61.8	61.8	61.8
4-5 PM	2757	0.0	OFF	2757	0	0.00	0	58.2	58.2	58.2
5-6 PM	2382	0.0	OFF	2382	0	0.00	0	62.0	62.0	62.0
6-7 PM	1678	0.0	OFF	1678	0	0.00	0	63.3	63.3	63.3
7-8 PM	1069	0.0	1500	1069	0	0.53	0	64.4	55.9	41.4
8-9 PM	894	0.0	1500	894	0	0.51	0	64.7	56.3	42.0
9-10 PM	798	0.0	1500	798	0	0.50	0	64.9	56.6	42.4
10-11 PM	722	0.0	1500	722	0	0.49	0	65.0	56.8	42.7
11PM-MID	479	0.0	1500	479	0	0.47	0	65.5	57.5	43.6

"OFF" INDICATES NO ROAD WORK (ALL LANES OPEN TO TRAFFIC)

----- SITE BREAKDOWN DELAYS -----	
BREAKDOWN DURATION (MINS)	0
RANGE OF QUEUE DELAY - MIN (VEH-H) MAX	0.0
AV BREAKDOWNS PER DAY	0.00
AV QUEUE DELAY/DAY (VEH-H)	0.0
AV TOTAL DELAY/DAY (VEH-H)	0.0

----- SITE ACCIDENT DELAYS -----	
BREAKDOWN DURATION (MINS)	0
RANGE OF QUEUE DELAY - MIN (VEH-H) MAX	0
AV BREAKDOWNS PER DAY	0
AV QUEUE DELAY/DAY (VEH-H)	0
AV TOTAL DELAY/DAY (VEH-H)	0

AVERAGE ACCIDENT NUMBERS (PIA/DAY)	
MAIN ROUTE WITHOUT WORKS	0.0164
MAIN ROUTE WITH WORKS	0.0160
'DIVERSION'	0.0000

PIA: Personal Injury Accidents

ECONOMIC IMPACT ON ROAD USERS	
ROAD USER COSTS PER DAY	\$495
CONGESTED HOURS PER DAY*	0

*Delays Exceeding User-Specified Maximum

**STH 441: USH 10 TO CTH CE (OUTAGAMIE COUNTY)
NIGHTTIME CLOSURE
NO DIVERSION ROUTE (MAX QUEUE METHOD)**

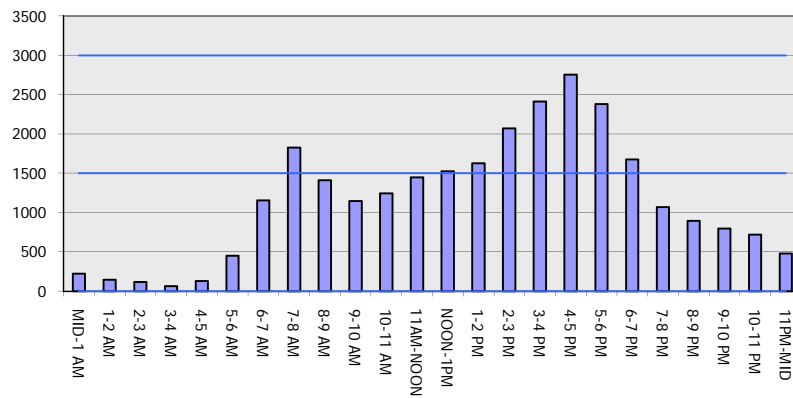
OCTOBER

Analyzed for 2009
Construction Season

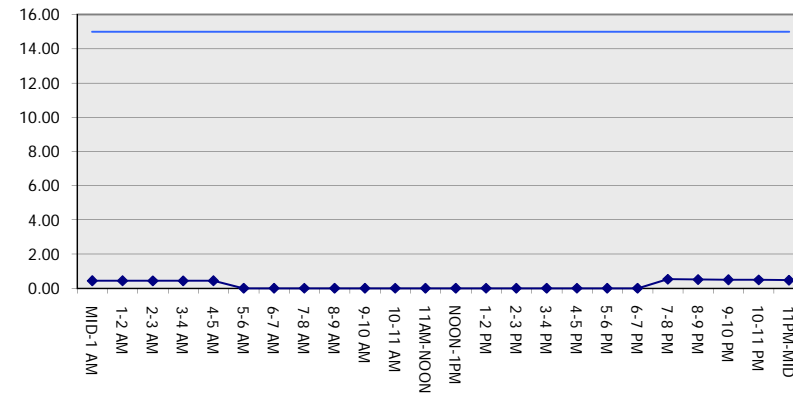
GRAPHICAL REPRESENTATION OF TRAFFIC MODEL INPUT AND OUTPUT

FRIDAY NORTHBOUND DIRECTION

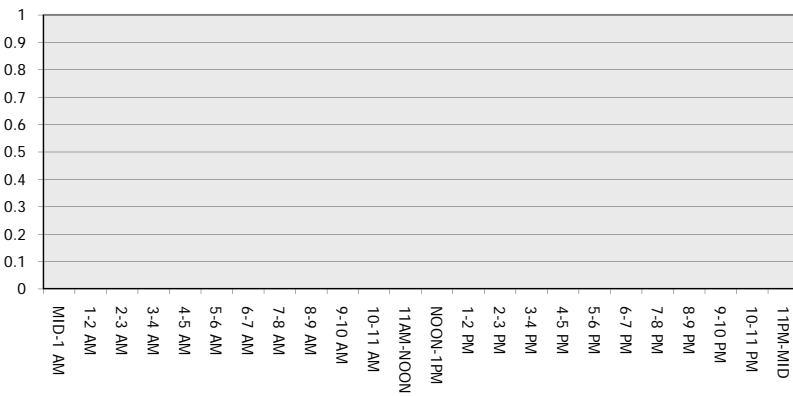
Main Route - Traffic Demand (Vehicles Per Hour)



Main Route Average Delay Per Vehicle (Minutes)



Main Route - Average Queue Length (Vehicles)



Main Route - Average Speed (MPH)

