

<b>STH 441: USH 10 TO CTH CE (OUTAGAMIE COUNTY)</b> <b>NIGHTTIME CLOSURE</b> <b>NO DIVERSION ROUTE (MAX QUEUE METHOD)</b>	<b>AUGUST</b>
	Analyzed for 2009 Construction Season

**SUMMARY OF TRAFFIC MODEL OUTPUT**

MON-THUR                  SOUTHBOUND DIRECTION

TIME OF DAY	FLOWS AND CAPACITY IN VEH/HR						AVERAGE SPEEDS IN MPH			
	MAIN ROUTE		SITE CAPA CITY	FLOW		AV.DEL PER VEH (MINS)	AVERAGE QUEUE (VEH)	MAIN ROUTE		SITE
	DEMAND FLOW	PCT HEAVY		MAIN ROUTE	'DIVER TED'			WITHOUT WORK ZONE	WITH WORK ZONE	
MID-1 AM	114	0.0	1500	114	0	0.43	0	66.2	58.6	45.0
1-2 AM	78	0.0	1500	78	0	0.43	0	66.3	58.7	45.2
2-3 AM	67	0.0	1500	67	0	0.43	0	66.3	58.7	45.2
3-4 AM	102	0.0	1500	102	0	0.43	0	66.2	58.6	45.1
4-5 AM	304	0.0	1500	304	0	0.45	0	65.8	58.1	44.3
5-6 AM	862	0.0	OFF	862	0	0.00	0	64.8	64.8	64.8
6-7 AM	1563	0.0	OFF	1563	0	0.00	0	63.5	63.5	63.5
7-8 AM	2098	0.0	OFF	2098	0	0.00	0	62.5	62.5	62.5
8-9 AM	1299	0.0	OFF	1299	0	0.00	0	64.0	64.0	64.0
9-10 AM	1032	0.0	OFF	1032	0	0.00	0	64.5	64.5	64.5
10-11 AM	1052	0.0	OFF	1052	0	0.00	0	64.4	64.4	64.4
11AM-NOON	1119	0.0	OFF	1119	0	0.00	0	64.3	64.3	64.3
NOON-1PM	1210	0.0	OFF	1210	0	0.00	0	64.1	64.1	64.1
1-2 PM	1319	0.0	OFF	1319	0	0.00	0	63.9	63.9	63.9
2-3 PM	1304	0.0	OFF	1304	0	0.00	0	64.0	64.0	64.0
3-4 PM	1417	0.0	OFF	1417	0	0.00	0	63.7	63.7	63.7
4-5 PM	1649	0.0	OFF	1649	0	0.00	0	63.3	63.3	63.3
5-6 PM	1616	0.0	OFF	1616	0	0.00	0	63.4	63.4	63.4
6-7 PM	1075	0.0	OFF	1075	0	0.00	0	64.4	64.4	64.4
7-8 PM	720	0.0	1500	720	0	0.49	0	65.0	56.8	42.7
8-9 PM	637	0.0	1500	637	0	0.48	0	65.2	57.1	43.0
9-10 PM	517	0.0	1500	517	0	0.47	0	65.4	57.4	43.5
10-11 PM	418	0.0	1500	418	0	0.46	0	65.6	57.7	43.8
11PM-MID	277	0.0	1500	277	0	0.45	0	65.9	58.1	44.4

"OFF" INDICATES NO ROAD WORK (ALL LANES OPEN TO TRAFFIC)

*----- SITE BREAKDOWN DELAYS -----*	
BREAKDOWN DURATION (MINS)	0
RANGE OF QUEUE DELAY - MIN (VEH-H) MAX	0.0
AV BREAKDOWNS PER DAY	0.00
AV QUEUE DELAY/DAY (VEH-H)	0.0
AV TOTAL DELAY/DAY (VEH-H)	0.0

*----- SITE ACCIDENT DELAYS -----*	
BREAKDOWN DURATION (MINS)	0
RANGE OF QUEUE DELAY - MIN (VEH-H) MAX	0
AV BREAKDOWNS PER DAY	0
AV QUEUE DELAY/DAY (VEH-H)	0
AV TOTAL DELAY/DAY (VEH-H)	0

AVERAGE ACCIDENT NUMBERS (PIA/DAY)	
MAIN ROUTE WITHOUT WORKS	0.0129
MAIN ROUTE WITH WORKS	0.0126
'DIVERSION'	0.0000
PIA: Personal Injury Accidents	
IMPACTS ON ROAD USERS	
ROAD USER COSTS PER DAY	\$315
CONGESTED HOURS PER DAY*	0

\*Delays Exceeding User-Specified Maximum

**STH 441: USH 10 TO CTH CE (OUTAGAMIE COUNTY)  
NIGHTTIME CLOSURE  
NO DIVERSION ROUTE (MAX QUEUE METHOD)**

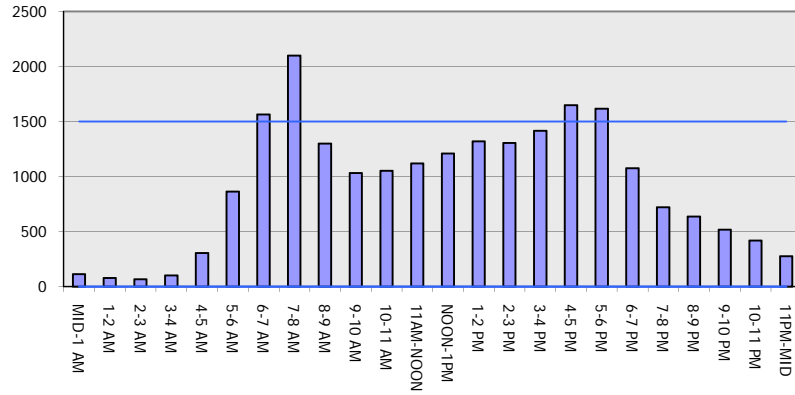
**AUGUST**

Analyzed for 2009  
Construction Season

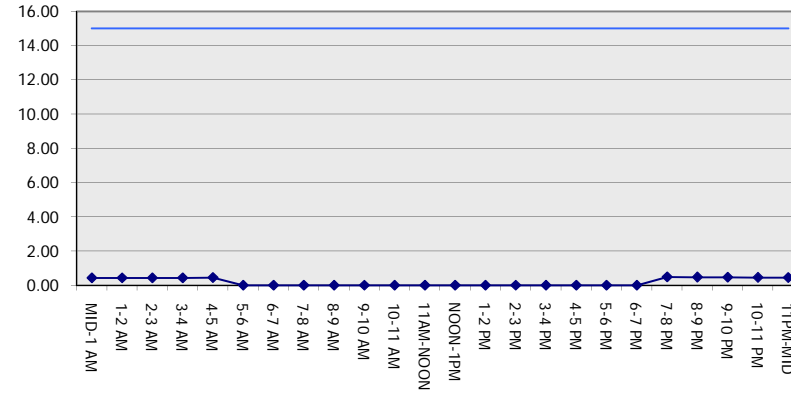
**GRAPHICAL REPRESENTATION OF TRAFFIC MODEL INPUT AND OUTPUT**

**MON-THUR SOUTHBOUND DIRECTION**

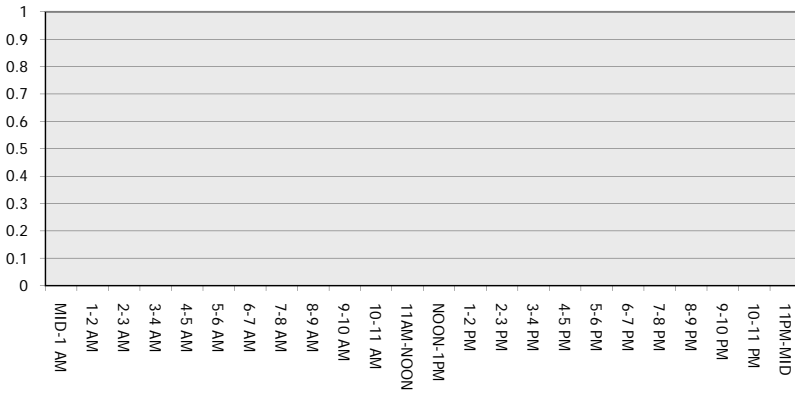
**Main Route - Traffic Demand (Vehicles Per Hour)**



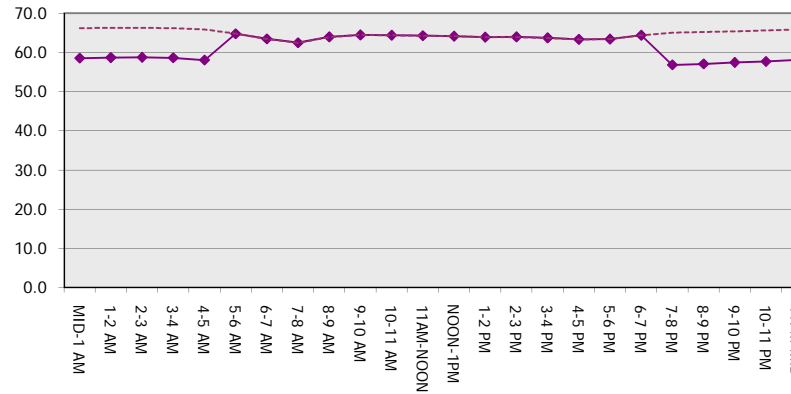
**Main Route Average Delay Per Vehicle (Minutes)**



**Main Route - Average Queue Length (Vehicles)**



**Main Route - Average Speed (MPH)**



<b>STH 441: USH 10 TO CTH CE (OUTAGAMIE COUNTY)</b> <b>NIGHTTIME CLOSURE</b> <b>NO DIVERSION ROUTE (MAX QUEUE METHOD)</b>	<b>AUGUST</b>
	Analyzed for 2009 Construction Season

**SUMMARY OF TRAFFIC MODEL OUTPUT**

MON-THUR                      NORTHBOUND DIRECTION

TIME OF DAY	FLOWS AND CAPACITY IN VEH/HR							AVERAGE SPEEDS IN MPH		
	MAIN ROUTE		SITE CAPA CITY	FLOW		AV.DEL PER VEH (MINS)	AVERAGE QUEUE (VEH)	MAIN ROUTE		SITE
	DEMAND FLOW	PCT HEAVY		MAIN ROUTE	'DIVER TED'			WITHOUT WORK ZONE	WITH WORK ZONE	
MID-1 AM	205	0.0	1500	205	0	0.44	0	66.0	58.3	44.6
1-2 AM	132	0.0	1500	132	0	0.44	0	66.1	58.6	45.0
2-3 AM	112	0.0	1500	112	0	0.43	0	66.2	58.6	45.0
3-4 AM	79	0.0	1500	79	0	0.43	0	66.3	58.7	45.1
4-5 AM	144	0.0	1500	144	0	0.44	0	66.1	58.5	44.9
5-6 AM	504	0.0	OFF	504	0	0.00	0	65.5	65.5	65.5
6-7 AM	1270	0.0	OFF	1270	0	0.00	0	64.0	64.0	64.0
7-8 AM	1766	0.0	OFF	1766	0	0.00	0	63.1	63.1	63.1
8-9 AM	1264	0.0	OFF	1264	0	0.00	0	64.0	64.0	64.0
9-10 AM	1103	0.0	OFF	1103	0	0.00	0	64.3	64.3	64.3
10-11 AM	1129	0.0	OFF	1129	0	0.00	0	64.3	64.3	64.3
11AM-NOON	1255	0.0	OFF	1255	0	0.00	0	64.0	64.0	64.0
NOON-1PM	1334	0.0	OFF	1334	0	0.00	0	63.9	63.9	63.9
1-2 PM	1410	0.0	OFF	1410	0	0.00	0	63.8	63.8	63.8
2-3 PM	1874	0.0	OFF	1874	0	0.00	0	62.9	62.9	62.9
3-4 PM	2131	0.0	OFF	2131	0	0.00	0	62.4	62.4	62.4
4-5 PM	2747	0.0	OFF	2747	0	0.00	0	58.4	58.4	58.4
5-6 PM	2367	0.0	OFF	2367	0	0.00	0	62.0	62.0	62.0
6-7 PM	1547	0.0	OFF	1547	0	0.00	0	63.5	63.5	63.5
7-8 PM	1084	0.0	1500	1084	0	0.53	0	64.3	55.8	41.4
8-9 PM	1008	0.0	1500	1008	0	0.52	0	64.5	56.0	41.7
9-10 PM	800	0.0	1500	800	0	0.50	0	64.9	56.6	42.4
10-11 PM	674	0.0	1500	674	0	0.49	0	65.1	56.9	42.8
11PM-MID	432	0.0	1500	432	0	0.46	0	65.6	57.6	43.8

"OFF" INDICATES NO ROAD WORK (ALL LANES OPEN TO TRAFFIC)

*----- SITE BREAKDOWN DELAYS -----*	
BREAKDOWN DURATION (MINS)	0
RANGE OF QUEUE DELAY - MIN (VEH-H) MAX	0.0
AV BREAKDOWNS PER DAY	0.00
AV QUEUE DELAY/DAY (VEH-H)	0.0
AV TOTAL DELAY/DAY (VEH-H)	0.0

*----- SITE ACCIDENT DELAYS -----*	
BREAKDOWN DURATION (MINS)	0
RANGE OF QUEUE DELAY - MIN (VEH-H) MAX	0
AV BREAKDOWNS PER DAY	0
AV QUEUE DELAY/DAY (VEH-H)	0
AV TOTAL DELAY/DAY (VEH-H)	0

AVERAGE ACCIDENT NUMBERS (PIA/DAY)	
MAIN ROUTE WITHOUT WORKS	0.0155
MAIN ROUTE WITH WORKS	0.0152
'DIVERSION'	0.0000

PIA: Personal Injury Accidents

ECONOMIC IMPACT ON ROAD USERS	
ROAD USER COSTS PER DAY	\$484
CONGESTED HOURS PER DAY*	0

\*Delays Exceeding User-Specified Maximum

**STH 441: USH 10 TO CTH CE (OUTAGAMIE COUNTY)**  
**NIGHTTIME CLOSURE**  
**NO DIVERSION ROUTE (MAX QUEUE METHOD)**

**AUGUST**  
 Analyzed for 2009  
 Construction Season

**GRAPHICAL REPRESENTATION OF TRAFFIC MODEL INPUT AND OUTPUT**  
**MON-THUR NORTHBOUND DIRECTION**

