

STH 441: USH 10 TO CTH CE (OUTAGAMIE COUNTY) NIGHTTIME CLOSURE NO DIVERSION ROUTE (MAX QUEUE METHOD)	AUGUST
	Analyzed for 2009 Construction Season

SUMMARY OF TRAFFIC MODEL OUTPUT

FRIDAY SOUTHBOUND DIRECTION

TIME OF DAY	FLOWS AND CAPACITY IN VEH/HR						AVERAGE SPEEDS IN MPH				
	MAIN ROUTE		SITE CAPA CITY	FLOW		AV.DEL PER VEH (MINS)	AVERAGE QUEUE (VEH)	MAIN ROUTE		SITE	
	DEMAND FLOW	PCT HEAVY		MAIN ROUTE	'DIVER TED'			WITHOUT WORK ZONE	WITH WORK ZONE		
MID-1 AM	152	0.0	1500	152	0	0.44	0	66.1	58.5	44.9	
1-2 AM	109	0.0	1500	109	0	0.43	0	66.2	58.6	45.0	
2-3 AM	90	0.0	1500	90	0	0.43	0	66.2	58.7	45.1	
3-4 AM	112	0.0	1500	112	0	0.43	0	66.2	58.6	45.0	
4-5 AM	312	0.0	1500	312	0	0.45	0	65.8	58.0	44.2	
5-6 AM	768	0.0	OFF	768	0	0.00	0	65.0	65.0	65.0	
6-7 AM	1485	0.0	OFF	1485	0	0.00	0	63.6	63.6	63.6	
7-8 AM	1963	0.0	OFF	1963	0	0.00	0	62.7	62.7	62.7	
8-9 AM	1317	0.0	OFF	1317	0	0.00	0	64.0	64.0	64.0	
9-10 AM	1073	0.0	OFF	1073	0	0.00	0	64.4	64.4	64.4	
10-11 AM	1175	0.0	OFF	1175	0	0.00	0	64.2	64.2	64.2	
11AM-NOON	1278	0.0	OFF	1278	0	0.00	0	64.0	64.0	64.0	
NOON-1PM	1383	0.0	OFF	1383	0	0.00	0	63.8	63.8	63.8	
1-2 PM	1480	0.0	OFF	1480	0	0.00	0	63.7	63.7	63.7	
2-3 PM	1444	0.0	OFF	1444	0	0.00	0	63.7	63.7	63.7	
3-4 PM	1509	0.0	OFF	1509	0	0.00	0	63.6	63.6	63.6	
4-5 PM	1684	0.0	OFF	1684	0	0.00	0	63.2	63.2	63.2	
5-6 PM	1594	0.0	OFF	1594	0	0.00	0	63.4	63.4	63.4	
6-7 PM	1180	0.0	OFF	1180	0	0.00	0	64.2	64.2	64.2	
7-8 PM	738	0.0	1500	738	0	0.49	0	65.0	56.8	42.6	
8-9 PM	641	0.0	1500	641	0	0.48	0	65.2	57.1	43.0	
9-10 PM	579	0.0	1500	579	0	0.48	0	65.3	57.3	43.2	
10-11 PM	441	0.0	1500	441	0	0.47	0	65.6	57.6	43.7	
11PM-MID	328	0.0	1500	328	0	0.45	0	65.8	57.9	44.2	

"OFF" INDICATES NO ROAD WORK (ALL LANES OPEN TO TRAFFIC)

----- SITE BREAKDOWN DELAYS -----	
BREAKDOWN DURATION (MINS)	0
RANGE OF QUEUE DELAY - MIN	0.0
(VEH-H) MAX	0.0
AV BREAKDOWNS PER DAY	0.00
AV QUEUE DELAY/DAY (VEH-H)	0.0
AV TOTAL DELAY/DAY (VEH-H)	0.0

----- SITE ACCIDENT DELAYS -----	
BREAKDOWN DURATION (MINS)	0
RANGE OF QUEUE DELAY - MIN	0
(VEH-H) MAX	0
AV BREAKDOWNS PER DAY	0
AV QUEUE DELAY/DAY (VEH-H)	0
AV TOTAL DELAY/DAY (VEH-H)	0

AVERAGE ACCIDENT NUMBERS (PIA/DAY)	
MAIN ROUTE WITHOUT WORKS	0.0134
MAIN ROUTE WITH WORKS	0.0132
'DIVERSION'	0.0000
<small>PIA: Personal Injury Accidents</small>	
IMPACTS ON ROAD USERS	
ROAD USER COSTS PER DAY	\$353
CONGESTED HOURS PER DAY*	0

*Delays Exceeding User-Specified Maximum

**STH 441: USH 10 TO CTH CE (OUTAGAMIE COUNTY)
NIGHTTIME CLOSURE
NO DIVERSION ROUTE (MAX QUEUE METHOD)**

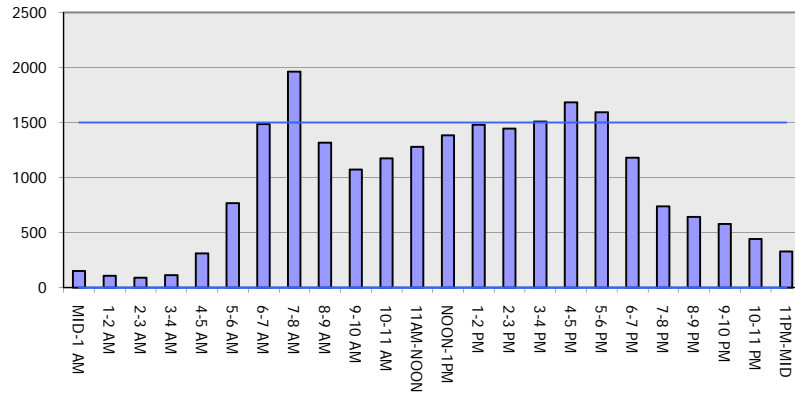
AUGUST

Analyzed for 2009
Construction Season

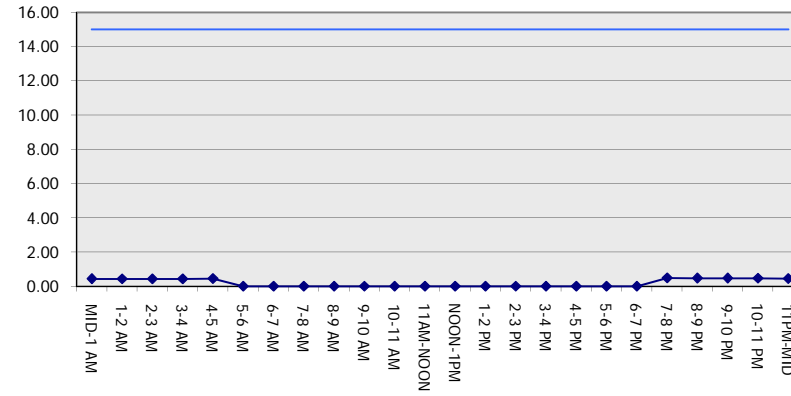
GRAPHICAL REPRESENTATION OF TRAFFIC MODEL INPUT AND OUTPUT

FRIDAY SOUTHBOUND DIRECTION

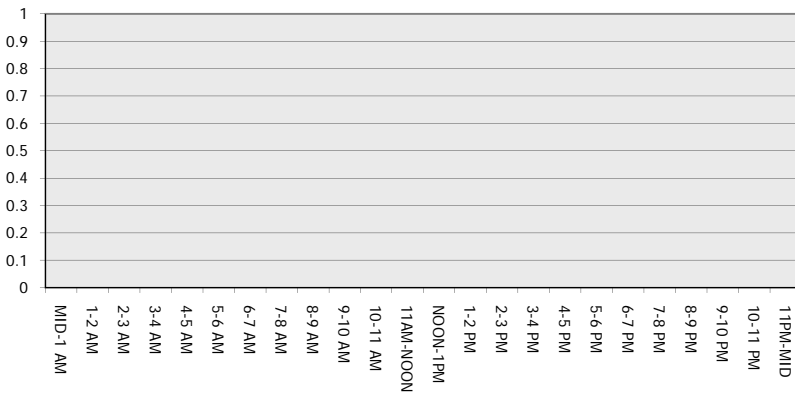
Main Route - Traffic Demand (Vehicles Per Hour)



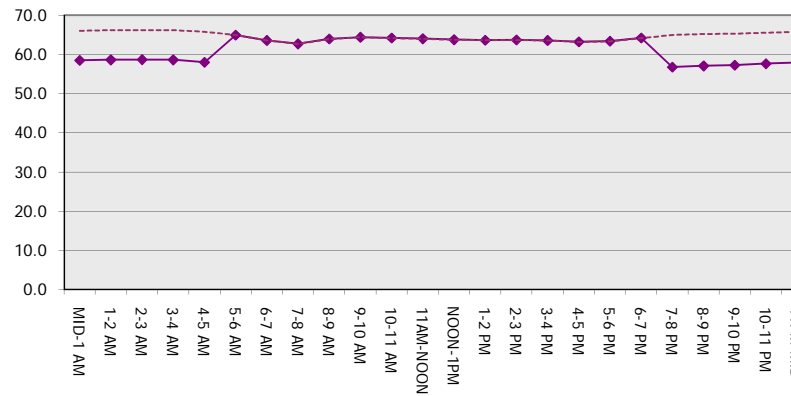
Main Route Average Delay Per Vehicle (Minutes)



Main Route - Average Queue Length (Vehicles)



Main Route - Average Speed (MPH)



STH 441: USH 10 TO CTH CE (OUTAGAMIE COUNTY) NIGHTTIME CLOSURE NO DIVERSION ROUTE (MAX QUEUE METHOD)	AUGUST
	Analyzed for 2009 Construction Season

SUMMARY OF TRAFFIC MODEL OUTPUT

FRIDAY NORTHBOUND DIRECTION

TIME OF DAY	FLOWS AND CAPACITY IN VEH/HR							AVERAGE SPEEDS IN MPH		
	MAIN ROUTE		SITE CAPA CITY	FLOW		AV.DEL PER VEH (MINS)	AVERAGE QUEUE (VEH)	MAIN ROUTE		SITE
	DEMAND FLOW	PCT HEAVY		MAIN ROUTE	'DIVER TED'			WITHOUT WORK ZONE	WITH WORK ZONE	
MID-1 AM	253	0.0	1500	253	0	0.45	0	65.9	58.2	44.5
1-2 AM	211	0.0	1500	211	0	0.44	0	66.0	58.3	44.6
2-3 AM	141	0.0	1500	141	0	0.44	0	66.1	58.5	44.9
3-4 AM	106	0.0	1500	106	0	0.43	0	66.2	58.6	45.1
4-5 AM	141	0.0	1500	141	0	0.44	0	66.1	58.5	44.9
5-6 AM	480	0.0	OFF	480	0	0.00	0	65.5	65.5	65.5
6-7 AM	1164	0.0	OFF	1164	0	0.00	0	64.2	64.2	64.2
7-8 AM	1670	0.0	OFF	1670	0	0.00	0	63.3	63.3	63.3
8-9 AM	1216	0.0	OFF	1216	0	0.00	0	64.1	64.1	64.1
9-10 AM	1130	0.0	OFF	1130	0	0.00	0	64.3	64.3	64.3
10-11 AM	1241	0.0	OFF	1241	0	0.00	0	64.1	64.1	64.1
11AM-NOON	1424	0.0	OFF	1424	0	0.00	0	63.7	63.7	63.7
NOON-1PM	1531	0.0	OFF	1531	0	0.00	0	63.5	63.5	63.5
1-2 PM	1644	0.0	OFF	1644	0	0.00	0	63.3	63.3	63.3
2-3 PM	2111	0.0	OFF	2111	0	0.00	0	62.5	62.5	62.5
3-4 PM	2187	0.0	OFF	2187	0	0.00	0	62.3	62.3	62.3
4-5 PM	2512	0.0	OFF	2512	0	0.00	0	60.8	60.8	60.8
5-6 PM	2105	0.0	OFF	2105	0	0.00	0	62.5	62.5	62.5
6-7 PM	1531	0.0	OFF	1531	0	0.00	0	63.5	63.5	63.5
7-8 PM	1132	0.0	1500	1132	0	0.55	0	64.3	55.5	40.7
8-9 PM	1009	0.0	1500	1009	0	0.52	0	64.5	56.0	41.7
9-10 PM	971	0.0	1500	971	0	0.52	0	64.6	56.1	41.8
10-11 PM	804	0.0	1500	804	0	0.50	0	64.9	56.6	42.4
11PM-MID	619	0.0	1500	619	0	0.48	0	65.2	57.1	43.0

"OFF" INDICATES NO ROAD WORK (ALL LANES OPEN TO TRAFFIC)

----- SITE BREAKDOWN DELAYS -----	
BREAKDOWN DURATION (MINS)	0
RANGE OF QUEUE DELAY - MIN	0.0
(VEH-H) MAX	0.0
AV BREAKDOWNS PER DAY	0.00
AV QUEUE DELAY/DAY (VEH-H)	0.0
AV TOTAL DELAY/DAY (VEH-H)	0.0

----- SITE ACCIDENT DELAYS -----	
BREAKDOWN DURATION (MINS)	0
RANGE OF QUEUE DELAY - MIN	0
(VEH-H) MAX	0
AV BREAKDOWNS PER DAY	0
AV QUEUE DELAY/DAY (VEH-H)	0
AV TOTAL DELAY/DAY (VEH-H)	0

AVERAGE ACCIDENT NUMBERS (PIA/DAY)	
MAIN ROUTE WITHOUT WORKS	0.0161
MAIN ROUTE WITH WORKS	0.0157
'DIVERSION'	0.0000

PIA: Personal Injury Accidents

ECONOMIC IMPACT ON ROAD USERS	
ROAD USER COSTS PER DAY	\$586
CONGESTED HOURS PER DAY*	0

*Delays Exceeding User-Specified Maximum

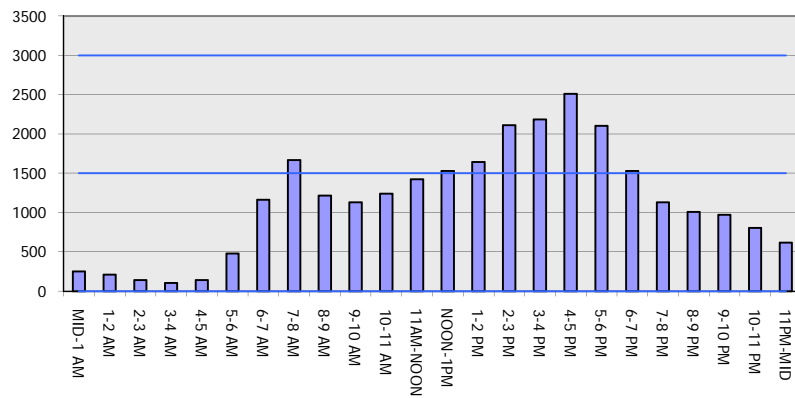
STH 441: USH 10 TO CTH CE (OUTAGAMIE COUNTY)
NIGHTTIME CLOSURE
NO DIVERSION ROUTE (MAX QUEUE METHOD)

AUGUST

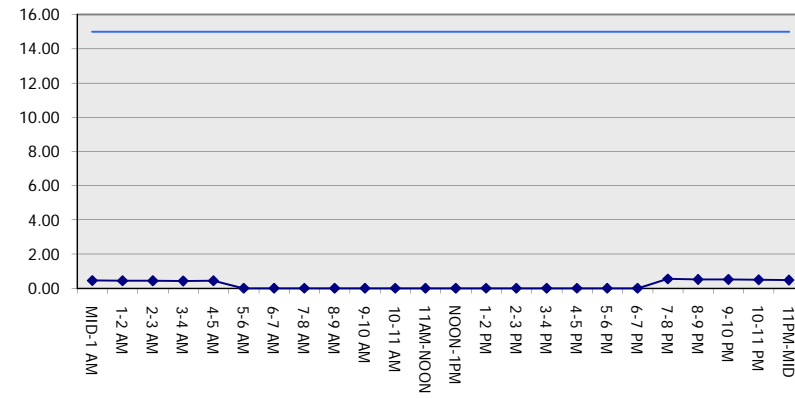
Analyzed for 2009
 Construction Season

GRAPHICAL REPRESENTATION OF TRAFFIC MODEL INPUT AND OUTPUT
FRIDAY NORTHBOUND DIRECTION

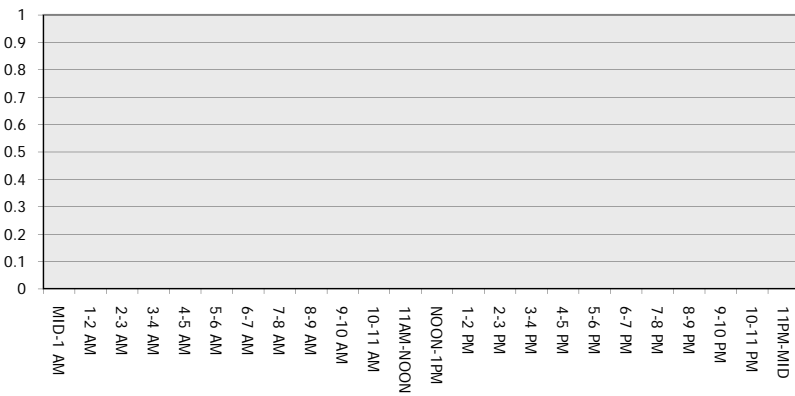
Main Route - Traffic Demand (Vehicles Per Hour)



Main Route Average Delay Per Vehicle (Minutes)



Main Route - Average Queue Length (Vehicles)



Main Route - Average Speed (MPH)

