

STH 441: CTH 00 TO CTH CE (OUTAGAMIE COUNTY) NIGHTTIME CLOSURE DIVERSION ROUTE:CTH CE - CTH N - CTH 00	AUGUST
	Analyzed for 2009 Construction Season

SUMMARY OF TRAFFIC MODEL OUTPUT

SATURDAY SOUTHBOUND DIRECTION

TIME OF DAY	FLOWS AND CAPACITY IN VEH/HR								AVERAGE SPEEDS IN MPH						
	MAIN ROUTE		ALTERNATE ROUTE		SITE CAPA CITY	FLOW MAIN ROUTE	FLOW DIVER -TING	TOTAL DIVN FLOW	AV.DEL PER VEH (MINS)	AVERAGE QUEUE (VEH)	MAIN ROUTE		ALTERNATE ROUTE		
	DEMAND FLOW	PCT HEAVY	NORMAL FLOW	PCT HEAVY							WITHOUT WORK ZN	WITH WORK ZN	SITE	WITHOUT WORK ZN	WITH WORK ZN
MID-1 AM	284	0.0	102	0.0	1500	284	0	102	0.45	0	65.8	52.8	44.3	24.0	24.0
1-2 AM	183	0.0	55	0.0	1500	183	0	55	0.44	0	66.1	53.2	44.8	24.4	24.4
2-3 AM	140	0.0	45	0.0	1500	140	0	45	0.44	0	66.1	53.3	44.9	24.5	24.5
3-4 AM	102	0.0	42	0.0	1500	102	0	42	0.43	0	66.2	53.5	45.1	24.5	24.5
4-5 AM	143	0.0	72	0.0	1500	143	0	72	0.44	0	66.1	53.3	44.9	24.3	24.3
5-6 AM	280	0.0	127	0.0	1500	280	0	127	0.45	0	65.9	52.8	44.3	23.8	23.8
6-7 AM	518	0.0	170	0.0	1500	518	0	170	0.47	0	65.4	52.0	43.4	23.5	23.5
7-8 AM	945	0.0	252	0.0	1499	945	0	252	0.51	0	64.6	50.6	41.9	22.9	22.9
8-9 AM	1420	0.0	323	0.0	OFF	1420	0	323	0.00	0	63.7	63.7	63.7	22.4	22.4
9-10 AM	1843	0.0	403	0.0	OFF	1843	0	403	0.00	0	63.0	63.0	63.0	21.7	21.7
10-11 AM	2000	0.0	451	0.0	OFF	2000	0	451	0.00	0	62.7	62.7	62.7	21.4	21.4
11A-NOON	1859	0.0	442	0.0	OFF	1859	0	442	0.00	0	62.9	62.9	62.9	21.4	21.4
NOON-1PM	1666	0.0	438	0.0	OFF	1666	0	438	0.00	0	63.3	63.3	63.3	21.5	21.5
1-2 PM	1546	0.0	415	0.0	OFF	1546	0	415	0.00	0	63.5	63.5	63.5	21.7	21.7
2-3 PM	1461	0.0	413	0.0	OFF	1461	0	413	0.00	0	63.7	63.7	63.7	21.7	21.7
3-4 PM	1395	0.0	388	0.0	OFF	1395	0	388	0.00	0	63.8	63.8	63.8	21.9	21.9
4-5 PM	1412	0.0	352	0.0	OFF	1412	0	352	0.00	0	63.8	63.8	63.8	22.2	22.2
5-6 PM	1236	0.0	340	0.0	OFF	1236	0	340	0.00	0	64.1	64.1	64.1	22.2	22.2
6-7 PM	1057	0.0	284	0.0	1500	1057	0	284	0.52	0	64.4	50.2	41.5	22.7	22.7
7-8 PM	903	0.0	226	0.0	1500	903	0	226	0.51	0	64.7	50.7	42.0	23.1	23.1
8-9 PM	830	0.0	191	0.0	1500	830	0	191	0.50	0	64.8	51.0	42.3	23.3	23.3
9-10 PM	803	0.0	190	0.0	1500	803	0	190	0.50	0	64.9	51.0	42.4	23.3	23.3
10-11 PM	740	0.0	181	0.0	1500	740	0	181	0.49	0	65.0	51.3	42.6	23.5	23.5
11PM-MID	500	0.0	148	0.0	1500	500	0	148	0.47	0	65.5	52.1	43.5	23.7	23.7

"OFF" INDICATES NO ROAD WORK (ALL LANES OPEN TO TRAFFIC)

----- SITE BREAKDOWN DELAYS -----	
BREAKDOWN DURATION (MINS)	0
RANGE OF QUEUE DELAY - MIN	0.0
(VEH-H) MAX	0.0
RANGE OF DIVN DELAY - MIN	0.0
(VEH-H) MAX	0.0
AV BREAKDOWNS PER DAY	0.00
AV QUEUE DELAY/DAY (VEH-H)	0.0
AV DIVN DELAY/DAY (VEH-H)	0.0
AV TOTAL DELAY/DAY (VEH-H)	0.0

----- SITE ACCIDENT DELAYS -----	
ACCIDENT DURATION (MINS)	0
RANGE OF QUEUE DELAY - MIN	0.0
(VEH-H) MAX	0.0
RANGE OF DIVN DELAY - MIN	0.0
(VEH-H) MAX	0.0
AV ACCIDENTS PER DAY	0.00
AV QUEUE DELAY/DAY (VEH-H)	0.0
AV DIVN DELAY/DAY (VEH-H)	0.0
AV TOTAL DELAY/DAY (VEH-H)	0.0

AVERAGE ACCIDENT NUMBERS (PIA/DAY)	
MAIN ROUTE WITHOUT WORKS	0.0074
MAIN ROUTE WITH WORKS	0.0069
DIVERSION	0.0448

PIA: Personal Injury Accidents

IMPACTS ON ROAD USERS	
ROAD USER COSTS PER DAY (DOLLARS)	\$868
CONGESTED HOURS PER DAY*	0

*Delays Exceeding 15 Minutes

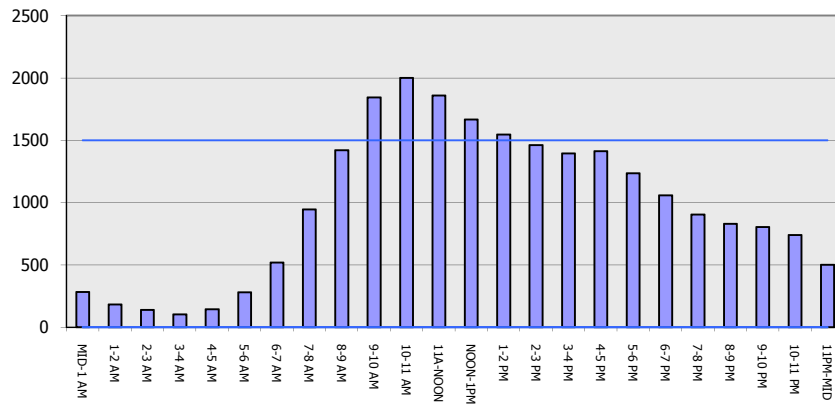
STH 441: CTH 00 TO CTH CE (OUTAGAMIE COUNTY)
NIGHTTIME CLOSURE
DIVERSION ROUTE:CTH CE - CTH N - CTH 00

AUGUST
 Analyzed for 2009
 Construction Season

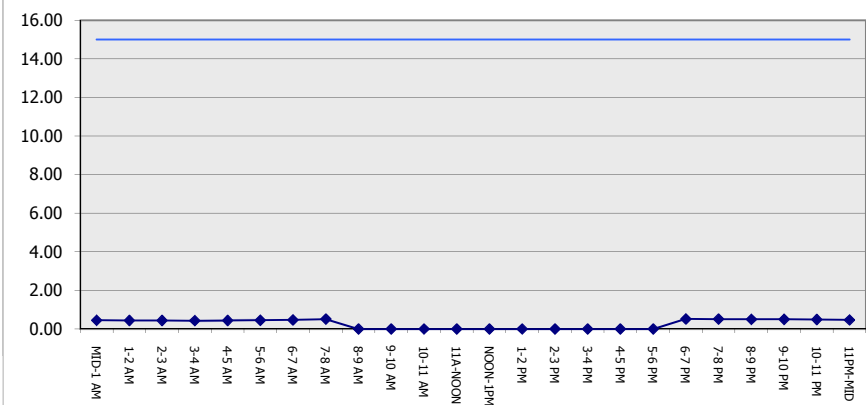
GRAPHICAL REPRESENTATION OF TRAFFIC MODEL INPUT AND OUTPUT

SATURDAY SOUTHBOUND DIRECTION

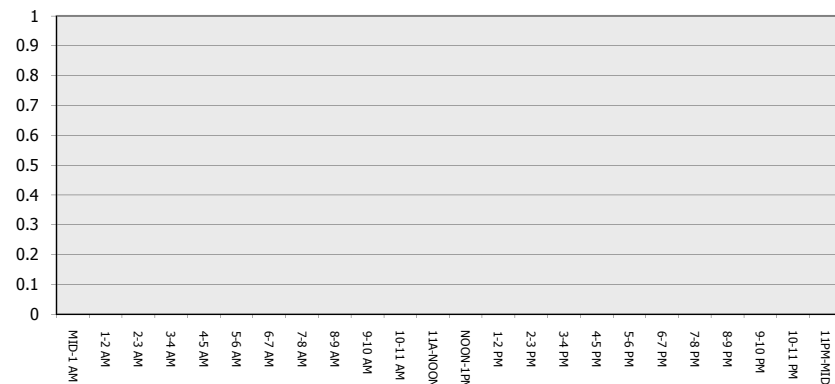
Main Route - Traffic Demand (Vehicles Per Hour)



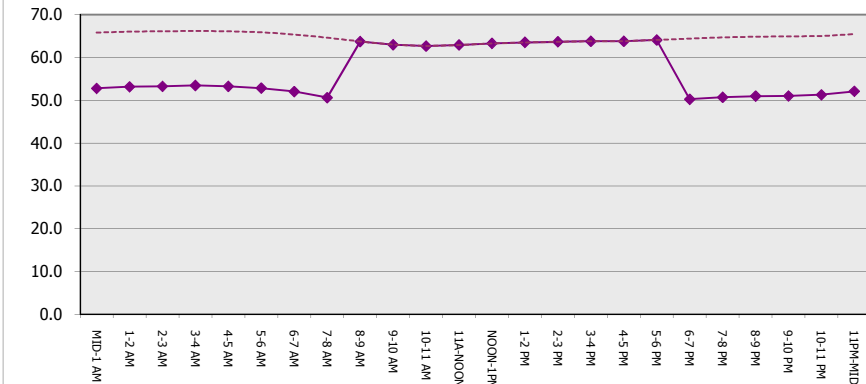
Main Route Average Delay Per Vehicle (Minutes)



Main Route - Average Queue Length (Vehicles)



Main Route - Average Speed (MPH)



**STH 441: CTH OO TO CTH CE (OUTAGAMIE COUNTY)
NIGHTTIME CLOSURE
DIVERSION ROUTE:CTH CE - CTH N - CTH OO**

AUGUST

Analyzed for 2009
Construction Season

SUMMARY OF TRAFFIC MODEL OUTPUT

SATURDAY NORTHBOUND DIRECTION

TIME OF DAY	FLOWS AND CAPACITY IN VEH/HR								AVERAGE SPEEDS IN MPH						
	MAIN		DIVERSION		SITE CAPA CITY	FLOW MAIN ROUTE	FLOW DIVER -TING	TOTAL DIVN FLOW	AV.DEL PER VEH (MINS)	AVERAGE QUEUE (VEH)	MAIN ROUTE		SITE	ALTERNATE ROUTE	
	DEMAND FLOW	PCT HEAVY	NORMAL FLOW	PCT HEAVY							WITHOUT WORK ZN	WITH WORK ZN		WITHOUT WORK ZN	WITH WORK ZN
MID-1 AM	255	0.0	130	0.0	1500	255	0	130	0.45	0	65.9	52.9	44.5	23.8	23.8
1-2 AM	130	0.0	79	0.0	1500	130	0	79	0.44	0	66.1	53.3	45.0	24.2	24.2
2-3 AM	116	0.0	64	0.0	1500	116	0	64	0.43	0	66.2	53.4	45.0	24.3	24.3
3-4 AM	111	0.0	47	0.0	1500	111	0	47	0.43	0	66.2	53.4	45.0	24.5	24.5
4-5 AM	149	0.0	44	0.0	1500	149	0	44	0.44	0	66.1	53.3	44.9	24.5	24.5
5-6 AM	212	0.0	95	0.0	1500	212	0	95	0.44	0	66.0	53.0	44.6	24.1	24.1
6-7 AM	329	0.0	170	0.0	1500	329	0	170	0.45	0	65.8	52.7	44.2	23.5	23.5
7-8 AM	524	0.0	191	0.0	1500	524	0	191	0.47	0	65.4	52.0	43.4	23.3	23.3
8-9 AM	787	0.0	255	0.0	OFF	787	0	255	0.00	0	64.9	64.9	64.9	22.9	22.9
9-10 AM	1069	0.0	347	0.0	OFF	1069	0	347	0.00	0	64.4	64.4	64.4	22.2	22.2
10-11 AM	1354	0.0	435	0.0	OFF	1354	0	435	0.00	0	63.8	63.8	63.8	21.5	21.5
11A-NOON	1549	0.0	493	0.0	OFF	1549	0	493	0.00	0	63.5	63.5	63.5	21.1	21.1
NOON-1PM	1705	0.0	524	0.0	OFF	1705	0	524	0.00	0	63.2	63.2	63.2	20.8	20.8
1-2 PM	1761	0.0	530	0.0	OFF	1761	0	530	0.00	0	63.1	63.1	63.1	20.8	20.8
2-3 PM	1722	0.0	518	0.0	OFF	1722	0	518	0.00	0	63.2	63.2	63.2	20.9	20.9
3-4 PM	1607	0.0	539	0.0	OFF	1607	0	539	0.00	0	63.4	63.4	63.4	20.7	20.7
4-5 PM	1751	0.0	500	0.0	OFF	1751	0	500	0.00	0	63.1	63.1	63.1	21.0	21.0
5-6 PM	1472	0.0	488	0.0	OFF	1472	0	488	0.00	0	63.7	63.7	63.7	21.1	21.1
6-7 PM	1193	0.0	447	0.0	1500	1193	0	447	0.63	0	64.1	48.1	38.7	21.4	21.4
7-8 PM	1056	0.0	349	0.0	1500	1056	0	349	0.52	0	64.4	50.2	41.5	22.2	22.2
8-9 PM	987	0.0	372	0.0	1500	987	0	372	0.52	0	64.5	50.5	41.7	22.0	22.0
9-10 PM	855	0.0	339	0.0	1500	855	0	339	0.51	0	64.8	50.9	42.2	22.2	22.2
10-11 PM	664	0.0	284	0.0	1500	664	0	284	0.49	0	65.1	51.5	42.9	22.7	22.7
11PM-MID	480	0.0	179	0.0	1500	480	0	179	0.47	0	65.5	52.2	43.6	23.5	23.5

"OFF" INDICATES NO ROAD WORK (ALL LANES OPEN TO TRAFFIC)

----- SITE BREAKDOWN DELAYS -----	
BREAKDOWN DURATION (MINS)	0
RANGE OF QUEUE DELAY - MIN	0.0
(VEH-H) MAX	0.0
RANGE OF DIVN DELAY - MIN	0.0
(VEH-H) MAX	0.0
AV BREAKDOWNS PER DAY	0.00
AV QUEUE DELAY/DAY (VEH-H)	0.0
AV DIVN DELAY/DAY (VEH-H)	0.0
AV TOTAL DELAY/DAY (VEH-H)	0.0

----- SITE ACCIDENT DELAYS -----	
ACCIDENT DURATION (MINS)	0
RANGE OF QUEUE DELAY - MIN	0.0
(VEH-H) MAX	0.0
RANGE OF DIVN DELAY - MIN	0.0
(VEH-H) MAX	0.0
AV ACCIDENTS PER DAY	0.00
AV QUEUE DELAY/DAY (VEH-H)	0.0
AV DIVN DELAY/DAY (VEH-H)	0.0
AV TOTAL DELAY/DAY (VEH-H)	0.0

AVERAGE ACCIDENT NUMBERS (PIA/DAY)	
MAIN ROUTE WITHOUT WORKS	0.0070
MAIN ROUTE WITH WORKS	0.0065
DIVERSION	0.0549

PIA: Personal Injury Accidents

IMPACTS ON ROAD USERS	
ROAD USER COSTS PER DAY (DOLLARS)	\$861
CONGESTED HOURS PER DAY*	0

*Delays Exceeding 15 Minutes

STH 441: CTH 00 TO CTH CE (OUTAGAMIE COUNTY)
NIGHTTIME CLOSURE
DIVERSION ROUTE:CTH CE - CTH N - CTH 00

AUGUST
 Analyzed for 2009
 Construction Season

GRAPHICAL REPRESENTATION OF TRAFFIC MODEL INPUT AND OUTPUT
SATURDAY NORTHBOUND DIRECTION

