

<b>STH 441: CTH 00 TO CTH CE (OUTAGAMIE COUNTY)</b> <b>NIGHTTIME CLOSURE</b> <b>DIVERSION ROUTE:CTH CE - CTH N - CTH 00</b>	<b>AUGUST</b>
	Analyzed for 2009 Construction Season

**SUMMARY OF TRAFFIC MODEL OUTPUT**

FRIDAY                      SOUTHBOUND DIRECTION

TIME OF DAY	FLOWS AND CAPACITY IN VEH/HR							AVERAGE SPEEDS IN MPH							
	MAIN ROUTE		ALTERNATE ROUTE		SITE CAPA CITY	FLOW MAIN ROUTE	FLOW DIVER -TING	TOTAL DIVN FLOW	AV.DEL PER VEH (MINS)	AVERAGE QUEUE (VEH)	MAIN ROUTE		ALTERNATE ROUTE		
	DEMAND FLOW	PCT HEAVY	NORMAL FLOW	PCT HEAVY							WITHOUT WORK ZN	WITH WORK ZN	SITE	WITHOUT WORK ZN	WITH WORK ZN
MID-1 AM	224	0.0	63	0.0	1500	224	0	63	0.44	0	66.0	53.0	44.6	24.3	24.3
1-2 AM	148	0.0	45	0.0	1500	148	0	45	0.44	0	66.1	53.3	44.9	24.5	24.5
2-3 AM	136	0.0	37	0.0	1500	136	0	37	0.44	0	66.1	53.3	45.0	24.5	24.5
3-4 AM	113	0.0	46	0.0	1500	113	0	46	0.43	0	66.2	53.4	45.0	24.5	24.5
4-5 AM	168	0.0	129	0.0	1500	168	0	129	0.44	0	66.1	53.2	44.8	23.8	23.8
5-6 AM	373	0.0	317	0.0	OFF	373	0	317	0.00	0	65.7	65.7	65.7	22.4	22.4
6-7 AM	841	0.0	614	0.0	OFF	841	0	614	0.00	0	64.8	64.8	64.8	20.1	20.1
7-8 AM	1196	0.0	810	0.0	OFF	1196	0	810	0.00	0	64.1	64.1	64.1	18.6	18.6
8-9 AM	1347	0.0	544	0.0	OFF	1347	0	544	0.00	0	63.9	63.9	63.9	20.7	20.7
9-10 AM	1534	0.0	443	0.0	OFF	1534	0	443	0.00	0	63.5	63.5	63.5	21.4	21.4
10-11 AM	1621	0.0	485	0.0	OFF	1621	0	485	0.00	0	63.3	63.3	63.3	21.1	21.1
11A-NOON	1633	0.0	528	0.0	OFF	1633	0	528	0.00	0	63.3	63.3	63.3	20.8	20.8
NOON-1PM	1789	0.0	571	0.0	OFF	1789	0	571	0.00	0	63.0	63.0	63.0	20.4	20.4
1-2 PM	1836	0.0	611	0.0	OFF	1836	0	611	0.00	0	63.0	63.0	63.0	20.1	20.1
2-3 PM	1949	0.0	596	0.0	OFF	1949	0	596	0.00	0	62.8	62.8	62.8	20.2	20.2
3-4 PM	2069	0.0	623	0.0	OFF	2069	0	623	0.00	0	62.5	62.5	62.5	20.1	20.1
4-5 PM	2164	0.0	695	0.0	OFF	2164	0	695	0.00	0	62.3	62.3	62.3	19.5	19.5
5-6 PM	2235	0.0	658	0.0	OFF	2235	0	658	0.00	0	62.2	62.2	62.2	19.8	19.8
6-7 PM	2095	0.0	487	0.0	OFF	2095	0	487	0.00	0	62.5	62.5	62.5	21.1	21.1
7-8 PM	1448	0.0	305	0.0	1499	1448	0	305	1.44	16	63.7	36.1	32.8	22.5	22.5
8-9 PM	967	0.0	265	0.0	1500	967	0	265	0.52	0	64.6	50.5	41.8	22.8	22.8
9-10 PM	743	0.0	239	0.0	1500	743	0	239	0.49	0	65.0	51.3	42.6	23.0	23.0
10-11 PM	647	0.0	182	0.0	1500	647	0	182	0.49	0	65.2	51.6	43.0	23.4	23.4
11PM-MID	508	0.0	136	0.0	1500	508	0	136	0.47	0	65.5	52.0	43.5	23.8	23.8

**"OFF" INDICATES NO ROAD WORK (ALL LANES OPEN TO TRAFFIC)**

*----- SITE BREAKDOWN DELAYS -----*	
BREAKDOWN DURATION (MINS)	0
RANGE OF QUEUE DELAY - MIN	0.0
(VEH-H) MAX	0.0
RANGE OF DIVN DELAY - MIN	0.0
(VEH-H) MAX	0.0
AV BREAKDOWNS PER DAY	0.00
AV QUEUE DELAY/DAY (VEH-H)	0.0
AV DIVN DELAY/DAY (VEH-H)	0.0
AV TOTAL DELAY/DAY (VEH-H)	0.0

*----- SITE ACCIDENT DELAYS -----*	
ACCIDENT DURATION (MINS)	0
RANGE OF QUEUE DELAY - MIN	0.0
(VEH-H) MAX	0.0
RANGE OF DIVN DELAY - MIN	0.0
(VEH-H) MAX	0.0
AV ACCIDENTS PER DAY	0.00
AV QUEUE DELAY/DAY (VEH-H)	0.0
AV DIVN DELAY/DAY (VEH-H)	0.0
AV TOTAL DELAY/DAY (VEH-H)	0.0

AVERAGE ACCIDENT NUMBERS (PIA/DAY)	
MAIN ROUTE WITHOUT WORKS	0.0088
MAIN ROUTE WITH WORKS	0.0085
DIVERSION	0.0698

PIA: Personal Injury Accidents

IMPACTS ON ROAD USERS	
ROAD USER COSTS PER DAY ( DOLLARS)	\$850
CONGESTED HOURS PER DAY*	0

\*Delays Exceeding 15 Minutes

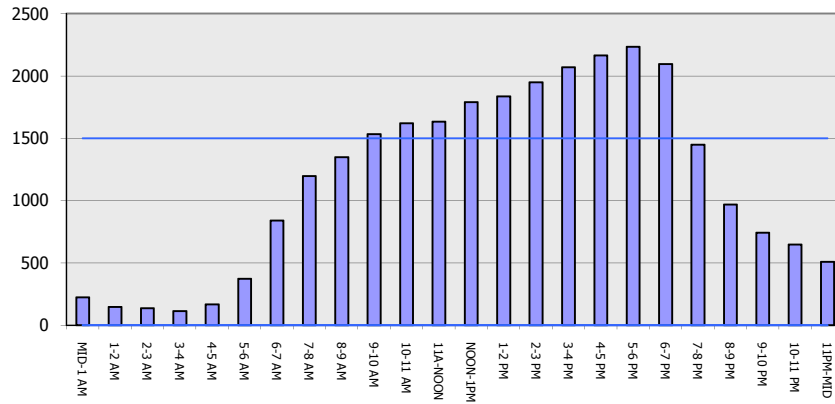
**STH 441: CTH 00 TO CTH CE (OUTAGAMIE COUNTY)**  
**NIGHTTIME CLOSURE**  
**DIVERSION ROUTE:CTH CE - CTH N - CTH 00**

**AUGUST**  
 Analyzed for 2009  
 Construction Season

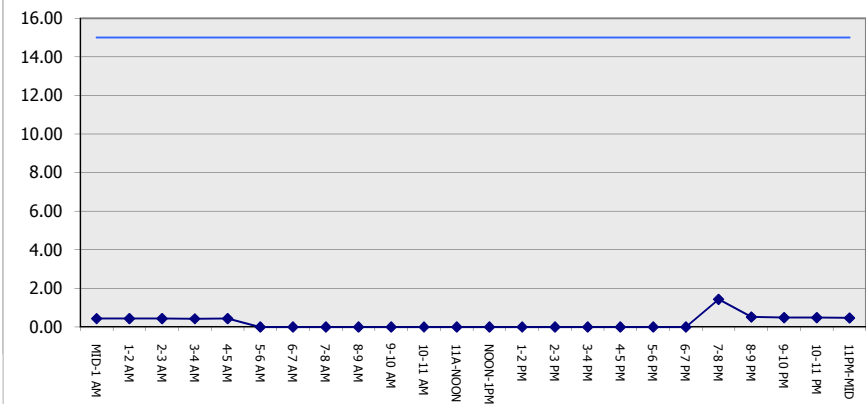
**GRAPHICAL REPRESENTATION OF TRAFFIC MODEL INPUT AND OUTPUT**

**FRIDAY SOUTHBOUND DIRECTION**

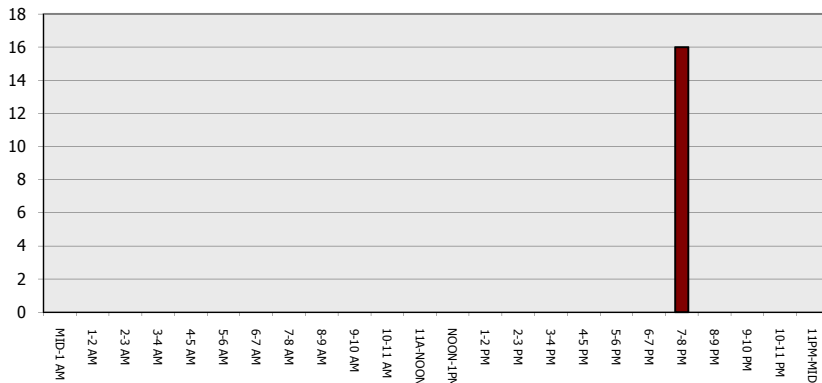
**Main Route - Traffic Demand (Vehicles Per Hour)**



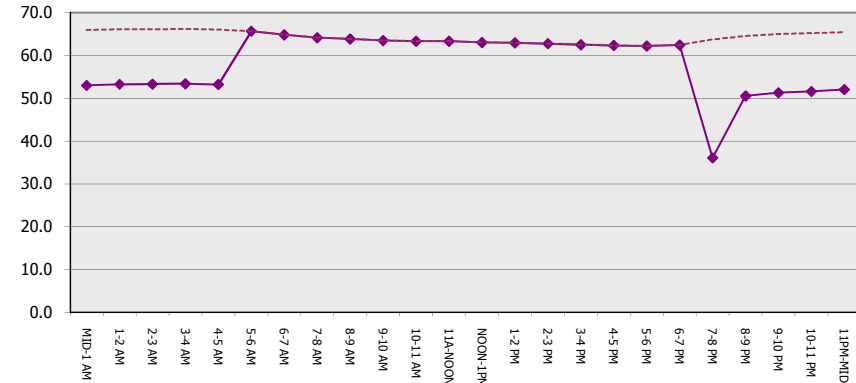
**Main Route Average Delay Per Vehicle (Minutes)**



**Main Route - Average Queue Length (Vehicles)**



**Main Route - Average Speed (MPH)**



<b>STH 441: CTH OO TO CTH CE (OUTAGAMIE COUNTY)</b> <b>NIGHTTIME CLOSURE</b> <b>DIVERSION ROUTE:CTH CE - CTH N - CTH OO</b>	<b>AUGUST</b>
	Analyzed for 2009 Construction Season

<b>SUMMARY OF TRAFFIC MODEL OUTPUT</b>	
FRIDAY	NORTHBOUND DIRECTION

TIME OF DAY	FLOWS AND CAPACITY IN VEH/HR								AVERAGE SPEEDS IN MPH						
	MAIN		DIVERSION		SITE CAPA CITY	FLOW MAIN ROUTE	FLOW DIVER -TING	TOTAL DIVN FLOW	AV.DEL PER VEH (MINS)	AVERAGE QUEUE (VEH)	MAIN ROUTE		SITE	ALTERNATE ROUTE	
	DEMAND FLOW	PCT HEAVY	NORMAL FLOW	PCT HEAVY							WITHOUT WORK ZN	WITH WORK ZN		WITHOUT WORK ZN	WITH WORK ZN
MID-1 AM	225	0.0	105	0.0	1500	225	0	105	0.44	0	66.0	53.0	44.6	24.0	24.0
1-2 AM	126	0.0	88	0.0	1500	126	0	88	0.43	0	66.1	53.3	45.0	24.2	24.2
2-3 AM	107	0.0	59	0.0	1500	107	0	59	0.43	0	66.2	53.4	45.1	24.4	24.4
3-4 AM	140	0.0	43	0.0	1500	140	0	43	0.44	0	66.1	53.3	44.9	24.5	24.5
4-5 AM	229	0.0	59	0.0	1500	229	0	59	0.44	0	66.0	53.0	44.6	24.4	24.4
5-6 AM	453	0.0	198	0.0	OFF	453	0	198	0.00	0	65.5	65.5	65.5	23.3	23.3
6-7 AM	791	0.0	481	0.0	OFF	791	0	481	0.00	0	64.9	64.9	64.9	21.2	21.2
7-8 AM	1042	0.0	690	0.0	OFF	1042	0	690	0.00	0	64.5	64.5	64.5	19.6	19.6
8-9 AM	954	0.0	501	0.0	OFF	954	0	501	0.00	0	64.6	64.6	64.6	21.0	21.0
9-10 AM	1002	0.0	466	0.0	OFF	1002	0	466	0.00	0	64.5	64.5	64.5	21.2	21.2
10-11 AM	1113	0.0	513	0.0	OFF	1113	0	513	0.00	0	64.3	64.3	64.3	20.9	20.9
11A-NOON	1188	0.0	588	0.0	OFF	1188	0	588	0.00	0	64.1	64.1	64.1	20.3	20.3
NOON-1PM	1315	0.0	632	0.0	OFF	1315	0	632	0.00	0	64.0	64.0	64.0	20.0	20.0
1-2 PM	1513	0.0	678	0.0	OFF	1513	0	678	0.00	0	63.6	63.6	63.6	19.6	19.6
2-3 PM	1664	0.0	872	0.0	OFF	1664	0	872	0.00	0	63.3	63.3	63.3	18.1	18.1
3-4 PM	1813	0.0	903	0.0	OFF	1813	0	903	0.00	0	63.0	63.0	63.0	17.9	17.9
4-5 PM	1896	0.0	1038	0.0	OFF	1896	0	1038	0.00	0	62.8	62.8	62.8	16.9	16.9
5-6 PM	1810	0.0	869	0.0	OFF	1810	0	869	0.00	0	63.0	63.0	63.0	18.2	18.2
6-7 PM	1407	0.0	632	0.0	OFF	1407	0	632	0.00	0	63.8	63.8	63.8	20.0	20.0
7-8 PM	1087	0.0	467	0.0	1500	1087	0	467	0.53	0	64.3	50.2	41.4	21.2	21.2
8-9 PM	898	0.0	417	0.0	1500	898	0	417	0.51	0	64.7	50.8	42.0	21.6	21.6
9-10 PM	771	0.0	401	0.0	1500	771	0	401	0.50	0	65.0	51.2	42.5	21.7	21.7
10-11 PM	560	0.0	333	0.0	1500	560	0	333	0.48	0	65.3	51.9	43.3	22.3	22.3
11PM-MID	410	0.0	255	0.0	1500	410	0	255	0.46	0	65.6	52.4	43.8	22.9	22.9

**"OFF" INDICATES NO ROAD WORK (ALL LANES OPEN TO TRAFFIC)**

*----- SITE BREAKDOWN DELAYS -----*	
BREAKDOWN DURATION (MINS)	0
RANGE OF QUEUE DELAY - MIN	0.0
(VEH-H) MAX	0.0
RANGE OF DIVN DELAY - MIN	0.0
(VEH-H) MAX	0.0
AV BREAKDOWNS PER DAY	0.00
AV QUEUE DELAY/DAY (VEH-H)	0.0
AV DIVN DELAY/DAY (VEH-H)	0.0
AV TOTAL DELAY/DAY (VEH-H)	0.0

*----- SITE ACCIDENT DELAYS -----*	
ACCIDENT DURATION (MINS)	0
RANGE OF QUEUE DELAY - MIN	0.0
(VEH-H) MAX	0.0
RANGE OF DIVN DELAY - MIN	0.0
(VEH-H) MAX	0.0
AV ACCIDENTS PER DAY	0.00
AV QUEUE DELAY/DAY (VEH-H)	0.0
AV DIVN DELAY/DAY (VEH-H)	0.0
AV TOTAL DELAY/DAY (VEH-H)	0.0

AVERAGE ACCIDENT NUMBERS (PIA/DAY)	
MAIN ROUTE WITHOUT WORKS	0.0072
MAIN ROUTE WITH WORKS	0.0069
DIVERSION	0.0835

PIA: Personal Injury Accidents

IMPACTS ON ROAD USERS	
ROAD USER COSTS PER DAY ( DOLLARS)	\$494
CONGESTED HOURS PER DAY*	0

\*Delays Exceeding 15 Minutes

**STH 441: CTH 00 TO CTH CE (OUTAGAMIE COUNTY)**  
**NIGHTTIME CLOSURE**  
**DIVERSION ROUTE:CTH CE - CTH N - CTH 00**

**AUGUST**  
 Analyzed for 2009  
 Construction Season

**GRAPHICAL REPRESENTATION OF TRAFFIC MODEL INPUT AND OUTPUT**  
**FRIDAY NORTHBOUND DIRECTION**

