

STH 441: CTH 00 TO CTH CE (OUTAGAMIE COUNTY) NIGHTTIME CLOSURE DIVERSION ROUTE: CTH CE - CTH N - CTH 00	MAY
	Analyzed for 2009 Construction Season

SUMMARY OF TRAFFIC MODEL OUTPUT

SUNDAY SOUTHBOUND DIRECTION

TIME OF DAY	FLOWS AND CAPACITY IN VEH/HR								AVERAGE SPEEDS IN MPH						
	MAIN ROUTE		ALTERNATE ROUTE		SITE CAPA CITY	FLOW MAIN ROUTE	FLOW DIVER -TING	TOTAL DIVN FLOW	AV.DEL PER VEH (MINS)	AVERAGE QUEUE (VEH)	MAIN ROUTE		ALTERNATE ROUTE		
	DEMAND FLOW	PCT HEAVY	NORMAL FLOW	PCT HEAVY							WITHOUT WORK ZN	WITH WORK ZN	SITE	WITHOUT WORK ZN	WITH WORK ZN
MID-1 AM	176	0.0	101	0.0	1500	176	0	101	0.44	0	66.1	53.2	44.8	24.1	24.1
1-2 AM	95	0.0	59	0.0	1500	95	0	59	0.43	0	66.2	53.5	45.1	24.4	24.4
2-3 AM	83	0.0	44	0.0	1500	83	0	44	0.43	0	66.3	53.5	45.1	24.5	24.5
3-4 AM	55	0.0	41	0.0	1500	55	0	41	0.43	0	66.3	53.6	45.3	24.5	24.5
4-5 AM	83	0.0	34	0.0	1500	83	0	34	0.43	0	66.3	53.5	45.1	24.6	24.6
5-6 AM	171	0.0	77	0.0	1500	171	0	77	0.44	0	66.1	53.2	44.8	24.2	24.2
6-7 AM	287	0.0	110	0.0	1500	287	0	110	0.45	0	65.8	52.8	44.3	24.0	24.0
7-8 AM	519	0.0	130	0.0	1500	519	0	130	0.47	0	65.4	52.0	43.4	23.8	23.8
8-9 AM	822	0.0	208	0.0	1500	822	0	208	0.50	0	64.8	51.0	42.3	23.2	23.2
9-10 AM	1214	0.0	290	0.0	OFF	1214	0	290	0.00	0	64.1	64.1	64.1	22.6	22.6
10-11 AM	1462	0.0	394	0.0	OFF	1462	0	394	0.00	0	63.7	63.7	63.7	21.8	21.8
11A-NOON	1587	0.0	425	0.0	OFF	1587	0	425	0.00	0	63.4	63.4	63.4	21.5	21.5
NOON-1PM	1587	0.0	483	0.0	OFF	1587	0	483	0.00	0	63.4	63.4	63.4	21.1	21.1
1-2 PM	1493	0.0	444	0.0	OFF	1493	0	444	0.00	0	63.6	63.6	63.6	21.4	21.4
2-3 PM	1380	0.0	416	0.0	OFF	1380	0	416	0.00	0	63.8	63.8	63.8	21.7	21.7
3-4 PM	1424	0.0	433	0.0	OFF	1424	0	433	0.00	0	63.7	63.7	63.7	21.5	21.5
4-5 PM	1673	0.0	401	0.0	OFF	1673	0	401	0.00	0	63.3	63.3	63.3	21.7	21.7
5-6 PM	1599	0.0	384	0.0	OFF	1599	0	384	0.00	0	63.4	63.4	63.4	21.9	21.9
6-7 PM	1253	0.0	297	0.0	OFF	1253	0	297	0.00	0	64.0	64.0	64.0	22.5	22.5
7-8 PM	937	0.0	242	0.0	1500	937	0	242	0.51	0	64.6	50.7	41.9	23.0	23.0
8-9 PM	708	0.0	210	0.0	1500	708	0	210	0.49	0	65.1	51.4	42.7	23.2	23.2
9-10 PM	489	0.0	165	0.0	1500	489	0	165	0.47	0	65.5	52.1	43.5	23.6	23.6
10-11 PM	303	0.0	107	0.0	1500	303	0	107	0.45	0	65.8	52.7	44.3	24.0	24.0
11PM-MID	182	0.0	52	0.0	1500	182	0	52	0.44	0	66.1	53.2	44.8	24.5	24.5

"OFF" INDICATES NO ROAD WORK (ALL LANES OPEN TO TRAFFIC)

----- SITE BREAKDOWN DELAYS -----	
BREAKDOWN DURATION (MINS)	0
RANGE OF QUEUE DELAY - MIN	0.0
(VEH-H) MAX	0.0
RANGE OF DIVN DELAY - MIN	0.0
(VEH-H) MAX	0.0
AV BREAKDOWNS PER DAY	0.00
AV QUEUE DELAY/DAY (VEH-H)	0.0
AV DIVN DELAY/DAY (VEH-H)	0.0
AV TOTAL DELAY/DAY (VEH-H)	0.0

----- SITE ACCIDENT DELAYS -----	
ACCIDENT DURATION (MINS)	0
RANGE OF QUEUE DELAY - MIN	0.0
(VEH-H) MAX	0.0
RANGE OF DIVN DELAY - MIN	0.0
(VEH-H) MAX	0.0
AV ACCIDENTS PER DAY	0.00
AV QUEUE DELAY/DAY (VEH-H)	0.0
AV DIVN DELAY/DAY (VEH-H)	0.0
AV TOTAL DELAY/DAY (VEH-H)	0.0

AVERAGE ACCIDENT NUMBERS (PIA/DAY)	
MAIN ROUTE WITHOUT WORKS	0.0062
MAIN ROUTE WITH WORKS	0.0059
DIVERSION	0.0411

PIA: Personal Injury Accidents

IMPACTS ON ROAD USERS	
ROAD USER COSTS PER DAY (DOLLARS)	\$566
CONGESTED HOURS PER DAY*	0

*Delays Exceeding 15 Minutes

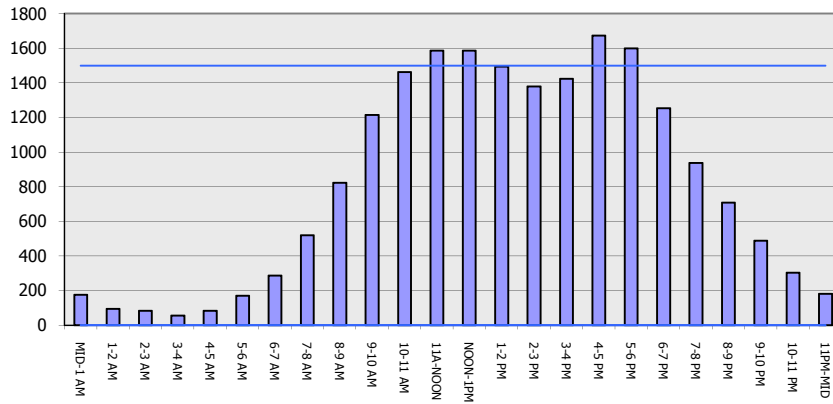
STH 441: CTH OO TO CTH CE (OUTAGAMIE COUNTY)
NIGHTTIME CLOSURE
DIVERSION ROUTE: CTH CE - CTH N - CTH OO

MAY
 Analyzed for 2009
 Construction Season

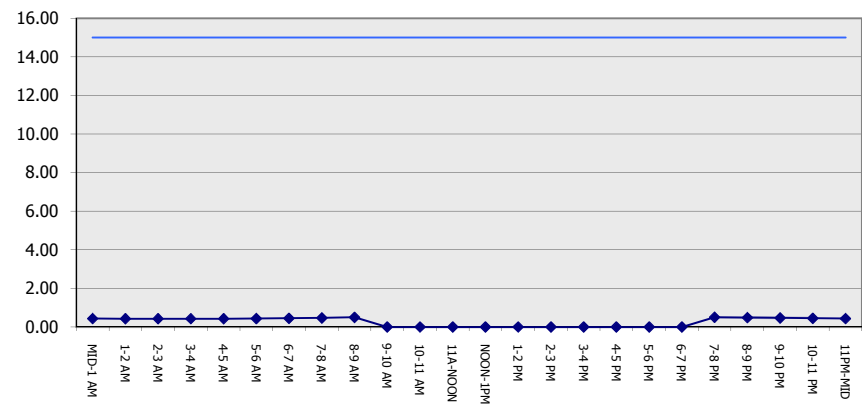
GRAPHICAL REPRESENTATION OF TRAFFIC MODEL INPUT AND OUTPUT

SUNDAY SOUTHBOUND DIRECTION

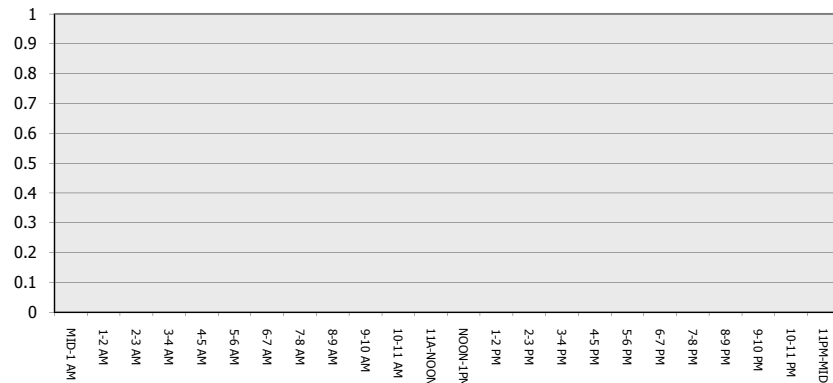
Main Route - Traffic Demand (Vehicles Per Hour)



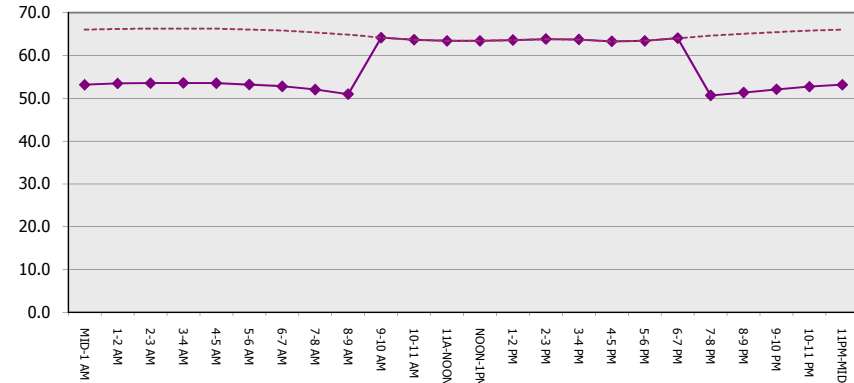
Main Route Average Delay Per Vehicle (Minutes)



Main Route - Average Queue Length (Vehicles)



Main Route - Average Speed (MPH)



**STH 441: CTH 00 TO CTH CE (OUTAGAMIE COUNTY)
NIGHTTIME CLOSURE
DIVERSION ROUTE: CTH CE - CTH N - CTH 00**

MAY
Analyzed for 2009
Construction Season

SUMMARY OF TRAFFIC MODEL OUTPUT
SUNDAY NORTHBOUND DIRECTION

TIME OF DAY	FLOWS AND CAPACITY IN VEH/HR								AVERAGE SPEEDS IN MPH						
	MAIN		DIVERSION		SITE CAPA CITY	FLOW MAIN ROUTE	FLOW DIVER -TING	TOTAL DIVN FLOW	AV.DEL PER VEH (MINS)	AVERAGE QUEUE (VEH)	MAIN ROUTE		SITE	ALTERNATE ROUTE	
	DEMAND FLOW	PCT HEAVY	NORMAL FLOW	PCT HEAVY							WITHOUT WORK ZN	WITH WORK ZN		WITHOUT WORK ZN	WITH WORK ZN
MID-1 AM	202	0.0	108	0.0	1500	202	0	108	0.44	0	66.0	53.1	44.6	24.0	24.0
1-2 AM	97	0.0	68	0.0	1500	97	0	68	0.43	0	66.2	53.5	45.1	24.3	24.3
2-3 AM	89	0.0	60	0.0	1500	89	0	60	0.43	0	66.2	53.5	45.1	24.4	24.4
3-4 AM	74	0.0	39	0.0	1500	74	0	39	0.43	0	66.3	53.5	45.2	24.5	24.5
4-5 AM	90	0.0	30	0.0	1500	90	0	30	0.43	0	66.2	53.5	45.1	24.6	24.6
5-6 AM	131	0.0	69	0.0	1500	131	0	69	0.44	0	66.1	53.3	45.0	24.3	24.3
6-7 AM	191	0.0	134	0.0	1500	191	0	134	0.44	0	66.0	53.2	44.7	23.8	23.8
7-8 AM	341	0.0	128	0.0	1500	341	0	128	0.46	0	65.8	52.6	44.1	23.8	23.8
8-9 AM	626	0.0	218	0.0	1500	626	0	218	0.48	0	65.2	51.7	43.0	23.2	23.2
9-10 AM	1129	0.0	302	0.0	OFF	1129	0	302	0.00	0	64.3	64.3	64.3	22.5	22.5
10-11 AM	1676	0.0	414	0.0	OFF	1676	0	414	0.00	0	63.3	63.3	63.3	21.7	21.7
11A-NOON	1925	0.0	420	0.0	OFF	1925	0	420	0.00	0	62.8	62.8	62.8	21.6	21.6
NOON-1PM	1933	0.0	526	0.0	OFF	1933	0	526	0.00	0	62.8	62.8	62.8	20.8	20.8
1-2 PM	1898	0.0	528	0.0	OFF	1898	0	528	0.00	0	62.8	62.8	62.8	20.8	20.8
2-3 PM	1922	0.0	536	0.0	OFF	1922	0	536	0.00	0	62.8	62.8	62.8	20.7	20.7
3-4 PM	2059	0.0	562	0.0	OFF	2059	0	562	0.00	0	62.5	62.5	62.5	20.6	20.6
4-5 PM	2090	0.0	574	0.0	OFF	2090	0	574	0.00	0	62.5	62.5	62.5	20.4	20.4
5-6 PM	1923	0.0	581	0.0	OFF	1923	0	581	0.00	0	62.8	62.8	62.8	20.4	20.4
6-7 PM	1628	0.0	508	0.0	OFF	1628	0	508	0.00	0	63.3	63.3	63.3	20.9	20.9
7-8 PM	1367	0.0	394	0.0	1500	1367	0	394	0.85	0	63.8	43.9	33.8	21.8	21.8
8-9 PM	1111	0.0	339	0.0	1500	1111	0	339	0.53	0	64.3	50.1	41.3	22.2	22.2
9-10 PM	756	0.0	222	0.0	1500	756	0	222	0.50	0	65.0	51.2	42.5	23.2	23.2
10-11 PM	474	0.0	168	0.0	1500	474	0	168	0.47	0	65.5	52.2	43.6	23.5	23.5
11PM-MID	272	0.0	78	0.0	1500	272	0	78	0.45	0	65.9	52.8	44.4	24.2	24.2

"OFF" INDICATES NO ROAD WORK (ALL LANES OPEN TO TRAFFIC)

----- SITE BREAKDOWN DELAYS -----	
BREAKDOWN DURATION (MINS)	0
RANGE OF QUEUE DELAY - MIN	0.0
(VEH-H) MAX	0.0
RANGE OF DIVN DELAY - MIN	0.0
(VEH-H) MAX	0.0
AV BREAKDOWNS PER DAY	0.00
AV QUEUE DELAY/DAY (VEH-H)	0.0
AV DIVN DELAY/DAY (VEH-H)	0.0
AV TOTAL DELAY/DAY (VEH-H)	0.0

----- SITE ACCIDENT DELAYS -----	
ACCIDENT DURATION (MINS)	0
RANGE OF QUEUE DELAY - MIN	0.0
(VEH-H) MAX	0.0
RANGE OF DIVN DELAY - MIN	0.0
(VEH-H) MAX	0.0
AV ACCIDENTS PER DAY	0.00
AV QUEUE DELAY/DAY (VEH-H)	0.0
AV DIVN DELAY/DAY (VEH-H)	0.0
AV TOTAL DELAY/DAY (VEH-H)	0.0

AVERAGE ACCIDENT NUMBERS (PIA/DAY)	
MAIN ROUTE WITHOUT WORKS	0.0076
MAIN ROUTE WITH WORKS	0.0073
DIVERSION	0.0519

PIA: Personal Injury Accidents

IMPACTS ON ROAD USERS	
ROAD USER COSTS PER DAY (DOLLARS)	\$800
CONGESTED HOURS PER DAY*	0

*Delays Exceeding 15 Minutes

STH 441: CTH OO TO CTH CE (OUTAGAMIE COUNTY)
NIGHTTIME CLOSURE
DIVERSION ROUTE: CTH CE - CTH N - CTH OO

MAY
 Analyzed for 2009
 Construction Season

GRAPHICAL REPRESENTATION OF TRAFFIC MODEL INPUT AND OUTPUT
SUNDAY NORTHBOUND DIRECTION

