

<b>STH 441: CTH 00 TO CTH CE (OUTAGAMIE COUNTY)</b> <b>NIGHTTIME CLOSURE</b> <b>DIVERSION ROUTE: CTH CE - CTH N - CTH 00</b>	<b>MAY</b>
	Analyzed for 2009 Construction Season

**SUMMARY OF TRAFFIC MODEL OUTPUT**

SATURDAY SOUTHBOUND DIRECTION

TIME OF DAY	FLOWS AND CAPACITY IN VEH/HR										AVERAGE SPEEDS IN MPH				
	MAIN ROUTE		ALTERNATE ROUTE		SITE CAPA CITY	FLOW MAIN ROUTE	FLOW DIVER -TING	TOTAL DIVN FLOW	AV.DEL PER VEH (MINS)	AVERAGE QUEUE (VEH)	MAIN ROUTE		ALTERNATE ROUTE		
	DEMAND FLOW	PCT HEAVY	NORMAL FLOW	PCT HEAVY							WITHOUT WORK ZN	WITH WORK ZN	SITE	WITHOUT WORK ZN	WITH WORK ZN
MID-1 AM	250	0.0	86	0.0	1500	250	0	86	0.45	0	65.9	52.9	44.5	24.2	24.2
1-2 AM	153	0.0	50	0.0	1500	153	0	50	0.44	0	66.1	53.3	44.9	24.5	24.5
2-3 AM	136	0.0	55	0.0	1500	136	0	55	0.44	0	66.1	53.3	45.0	24.4	24.4
3-4 AM	111	0.0	43	0.0	1500	111	0	43	0.43	0	66.2	53.4	45.0	24.5	24.5
4-5 AM	165	0.0	74	0.0	1500	165	0	74	0.44	0	66.1	53.2	44.8	24.3	24.3
5-6 AM	332	0.0	127	0.0	1500	332	0	127	0.45	0	65.8	52.7	44.2	23.8	23.8
6-7 AM	628	0.0	191	0.0	1500	628	0	191	0.48	0	65.2	51.7	43.0	23.3	23.3
7-8 AM	1054	0.0	266	0.0	1500	1054	0	266	0.52	0	64.4	50.3	41.5	22.8	22.8
8-9 AM	1393	0.0	379	0.0	OFF	1393	0	379	0.00	0	63.8	63.8	63.8	21.9	21.9
9-10 AM	1688	0.0	424	0.0	OFF	1688	0	424	0.00	0	63.2	63.2	63.2	21.6	21.6
10-11 AM	1732	0.0	448	0.0	OFF	1732	0	448	0.00	0	63.2	63.2	63.2	21.4	21.4
11A-NOON	1680	0.0	446	0.0	OFF	1680	0	446	0.00	0	63.3	63.3	63.3	21.4	21.4
NOON-1PM	1603	0.0	469	0.0	OFF	1603	0	469	0.00	0	63.4	63.4	63.4	21.2	21.2
1-2 PM	1466	0.0	438	0.0	OFF	1466	0	438	0.00	0	63.7	63.7	63.7	21.5	21.5
2-3 PM	1346	0.0	411	0.0	OFF	1346	0	411	0.00	0	63.9	63.9	63.9	21.7	21.7
3-4 PM	1306	0.0	415	0.0	OFF	1306	0	415	0.00	0	64.0	64.0	64.0	21.7	21.7
4-5 PM	1269	0.0	377	0.0	OFF	1269	0	377	0.00	0	64.0	64.0	64.0	21.9	21.9
5-6 PM	1066	0.0	375	0.0	OFF	1066	0	375	0.00	0	64.4	64.4	64.4	22.0	22.0
6-7 PM	843	0.0	323	0.0	1500	843	0	323	0.50	0	64.8	50.9	42.2	22.4	22.4
7-8 PM	708	0.0	260	0.0	1500	708	0	260	0.49	0	65.1	51.4	42.7	22.9	22.9
8-9 PM	646	0.0	238	0.0	1500	646	0	238	0.49	0	65.2	51.6	43.0	23.0	23.0
9-10 PM	796	0.0	206	0.0	1500	796	0	206	0.50	0	64.9	51.1	42.4	23.3	23.3
10-11 PM	545	0.0	160	0.0	1500	545	0	160	0.48	0	65.4	51.9	43.3	23.6	23.6
11PM-MID	287	0.0	122	0.0	1500	287	0	122	0.45	0	65.8	52.8	44.3	23.9	23.9

"OFF" INDICATES NO ROAD WORK (ALL LANES OPEN TO TRAFFIC)

*----- SITE BREAKDOWN DELAYS -----*	
BREAKDOWN DURATION (MINS)	0
RANGE OF QUEUE DELAY - MIN (VEH-H) MAX	0.0
RANGE OF DIVN DELAY - MIN (VEH-H) MAX	0.0
AV BREAKDOWNS PER DAY	0.00
AV QUEUE DELAY/DAY (VEH-H)	0.0
AV DIVN DELAY/DAY (VEH-H)	0.0
AV TOTAL DELAY/DAY (VEH-H)	0.0

*----- SITE ACCIDENT DELAYS -----*	
ACCIDENT DURATION (MINS)	0
RANGE OF QUEUE DELAY - MIN (VEH-H) MAX	0.0
RANGE OF DIVN DELAY - MIN (VEH-H) MAX	0.0
AV ACCIDENTS PER DAY	0.00
AV QUEUE DELAY/DAY (VEH-H)	0.0
AV DIVN DELAY/DAY (VEH-H)	0.0
AV TOTAL DELAY/DAY (VEH-H)	0.0

AVERAGE ACCIDENT NUMBERS (PIA/DAY)	
MAIN ROUTE WITHOUT WORKS	0.0068
MAIN ROUTE WITH WORKS	0.0063
DIVERSION	0.0472

PIA: Personal Injury Accidents

IMPACTS ON ROAD USERS	
ROAD USER COSTS PER DAY ( DOLLARS)	\$759
CONGESTED HOURS PER DAY*	0

\*Delays Exceeding 15 Minutes

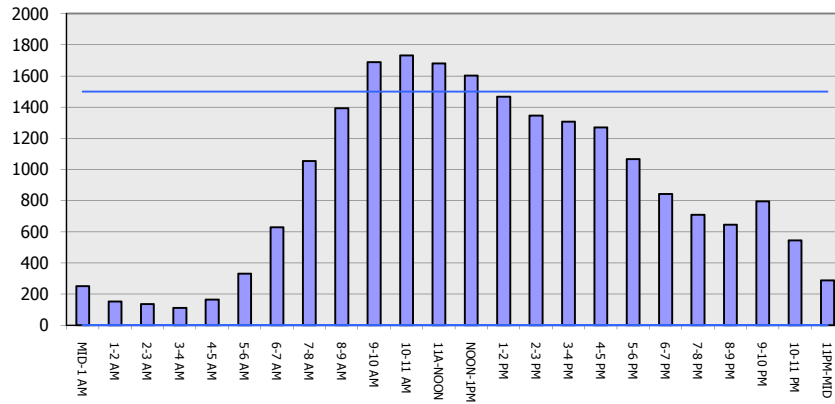
**STH 441: CTH 00 TO CTH CE (OUTAGAMIE COUNTY)**  
**NIGHTTIME CLOSURE**  
**DIVERSION ROUTE: CTH CE - CTH N - CTH 00**

**MAY**  
 Analyzed for 2009  
 Construction Season

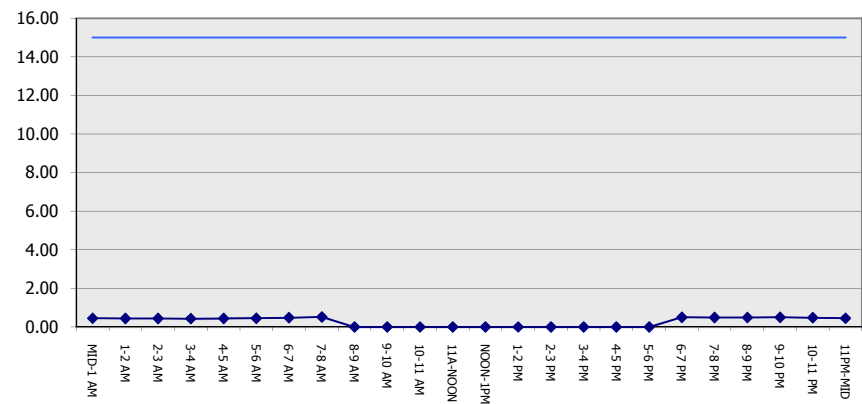
**GRAPHICAL REPRESENTATION OF TRAFFIC MODEL INPUT AND OUTPUT**

**SATURDAY SOUTHBOUND DIRECTION**

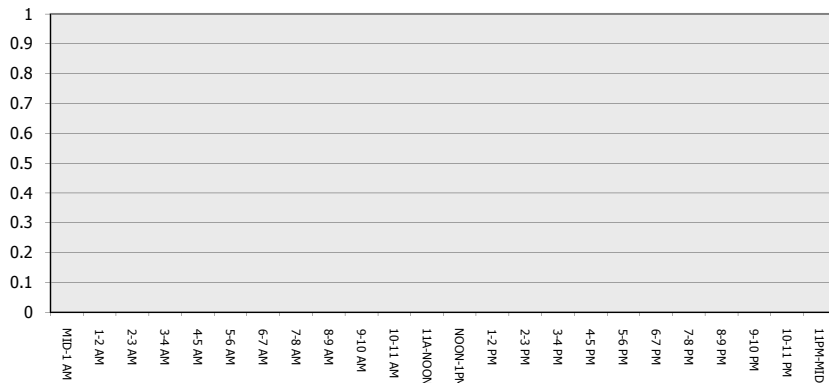
**Main Route - Traffic Demand (Vehicles Per Hour)**



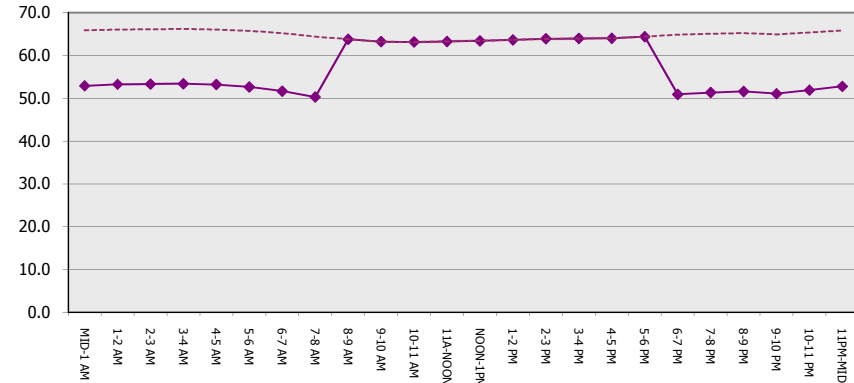
**Main Route Average Delay Per Vehicle (Minutes)**



**Main Route - Average Queue Length (Vehicles)**



**Main Route - Average Speed (MPH)**



<b>STH 441: CTH 00 TO CTH CE (OUTAGAMIE COUNTY)</b> <b>NIGHTTIME CLOSURE</b> <b>DIVERSION ROUTE: CTH CE - CTH N - CTH 00</b>	<b>MAY</b>
	Analyzed for 2009 Construction Season

**SUMMARY OF TRAFFIC MODEL OUTPUT**

SATURDAY NORTHBOUND DIRECTION

TIME OF DAY	FLOWS AND CAPACITY IN VEH/HR								AVERAGE SPEEDS IN MPH						
	MAIN		DIVERSION		SITE CAPA CITY	FLOW MAIN ROUTE	FLOW DIVER -TING	TOTAL DIVN FLOW	AV.DEL PER VEH (MINS)	AVERAGE QUEUE (VEH)	MAIN ROUTE		SITE	ALTERNATE ROUTE	
	DEMAND FLOW	PCT HEAVY	NORMAL FLOW	PCT HEAVY							WITHOUT WORK ZN	WITH WORK ZN		WITHOUT WORK ZN	WITH WORK ZN
MID-1 AM	198	0.0	120	0.0	1500	198	0	120	0.44	0	66.0	53.1	44.7	23.9	23.9
1-2 AM	121	0.0	62	0.0	1500	121	0	62	0.43	0	66.1	53.4	45.0	24.3	24.3
2-3 AM	94	0.0	63	0.0	1500	94	0	63	0.43	0	66.2	53.5	45.1	24.3	24.3
3-4 AM	117	0.0	37	0.0	1500	117	0	37	0.43	0	66.1	53.4	45.0	24.5	24.5
4-5 AM	132	0.0	46	0.0	1500	132	0	46	0.44	0	66.1	53.3	45.0	24.5	24.5
5-6 AM	206	0.0	94	0.0	1500	206	0	94	0.44	0	66.0	53.1	44.6	24.1	24.1
6-7 AM	319	0.0	184	0.0	1500	319	0	184	0.45	0	65.8	52.7	44.2	23.4	23.4
7-8 AM	516	0.0	235	0.0	1500	516	0	235	0.47	0	65.5	52.0	43.5	23.0	23.0
8-9 AM	753	0.0	305	0.0	OFF	753	0	305	0.00	0	65.0	65.0	65.0	22.5	22.5
9-10 AM	953	0.0	380	0.0	OFF	953	0	380	0.00	0	64.6	64.6	64.6	21.9	21.9
10-11 AM	1169	0.0	457	0.0	OFF	1169	0	457	0.00	0	64.2	64.2	64.2	21.4	21.4
11A-NOON	1365	0.0	522	0.0	OFF	1365	0	522	0.00	0	63.8	63.8	63.8	20.9	20.9
NOON-1PM	1465	0.0	556	0.0	OFF	1465	0	556	0.00	0	63.7	63.7	63.7	20.6	20.6
1-2 PM	1547	0.0	556	0.0	OFF	1547	0	556	0.00	0	63.5	63.5	63.5	20.6	20.6
2-3 PM	1631	0.0	560	0.0	OFF	1631	0	560	0.00	0	63.3	63.3	63.3	20.6	20.6
3-4 PM	1746	0.0	539	0.0	OFF	1746	0	539	0.00	0	63.2	63.2	63.2	20.7	20.7
4-5 PM	1610	0.0	555	0.0	OFF	1610	0	555	0.00	0	63.4	63.4	63.4	20.6	20.6
5-6 PM	1298	0.0	561	0.0	OFF	1298	0	561	0.00	0	64.0	64.0	64.0	20.6	20.6
6-7 PM	1078	0.0	498	0.0	1500	1078	0	498	0.53	0	64.4	50.2	41.4	21.0	21.0
7-8 PM	948	0.0	416	0.0	1500	948	0	416	0.51	0	64.6	50.6	41.9	21.7	21.7
8-9 PM	838	0.0	358	0.0	1500	838	0	358	0.50	0	64.8	51.0	42.2	22.1	22.1
9-10 PM	729	0.0	305	0.0	1500	729	0	305	0.49	0	65.0	51.3	42.7	22.5	22.5
10-11 PM	560	0.0	267	0.0	1500	560	0	267	0.48	0	65.3	51.9	43.3	22.8	22.8
11PM-MID	403	0.0	170	0.0	1500	403	0	170	0.46	0	65.6	52.4	43.9	23.5	23.5

**"OFF" INDICATES NO ROAD WORK (ALL LANES OPEN TO TRAFFIC)**

*----- SITE BREAKDOWN DELAYS -----*	
BREAKDOWN DURATION (MINS)	0
RANGE OF QUEUE DELAY - MIN	0.0
(VEH-H) MAX	0.0
RANGE OF DIVN DELAY - MIN	0.0
(VEH-H) MAX	0.0
AV BREAKDOWNS PER DAY	0.00
AV QUEUE DELAY/DAY (VEH-H)	0.0
AV DIVN DELAY/DAY (VEH-H)	0.0
AV TOTAL DELAY/DAY (VEH-H)	0.0

*----- SITE ACCIDENT DELAYS -----*	
ACCIDENT DURATION (MINS)	0
RANGE OF QUEUE DELAY - MIN	0.0
(VEH-H) MAX	0.0
RANGE OF DIVN DELAY - MIN	0.0
(VEH-H) MAX	0.0
AV ACCIDENTS PER DAY	0.00
AV QUEUE DELAY/DAY (VEH-H)	0.0
AV DIVN DELAY/DAY (VEH-H)	0.0
AV TOTAL DELAY/DAY (VEH-H)	0.0

AVERAGE ACCIDENT NUMBERS (PIA/DAY)	
MAIN ROUTE WITHOUT WORKS	0.0063
MAIN ROUTE WITH WORKS	0.0059
DIVERSION	0.0581

PIA: Personal Injury Accidents

IMPACTS ON ROAD USERS	
ROAD USER COSTS PER DAY ( DOLLARS)	\$716
CONGESTED HOURS PER DAY*	0

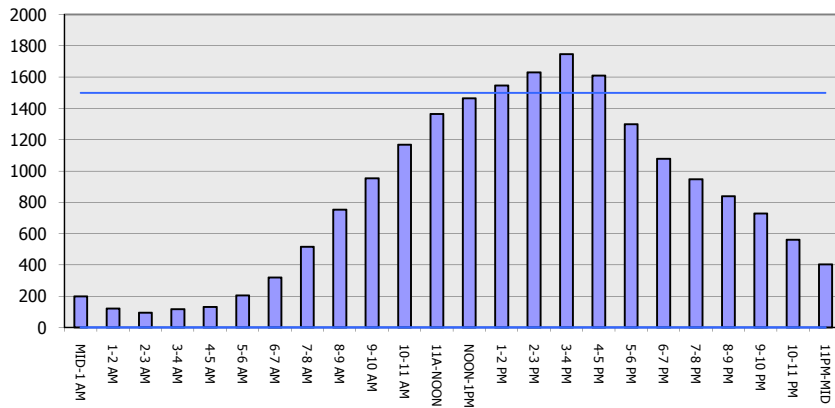
\*Delays Exceeding 15 Minutes

**STH 441: CTH 00 TO CTH CE (OUTAGAMIE COUNTY)**  
**NIGHTTIME CLOSURE**  
**DIVERSION ROUTE: CTH CE - CTH N - CTH 00**

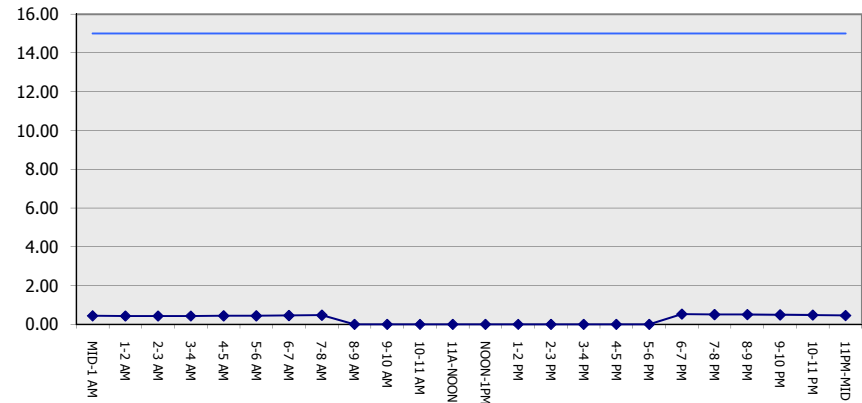
**MAY**  
 Analyzed for 2009  
 Construction Season

**GRAPHICAL REPRESENTATION OF TRAFFIC MODEL INPUT AND OUTPUT**  
**SATURDAY NORTHBOUND DIRECTION**

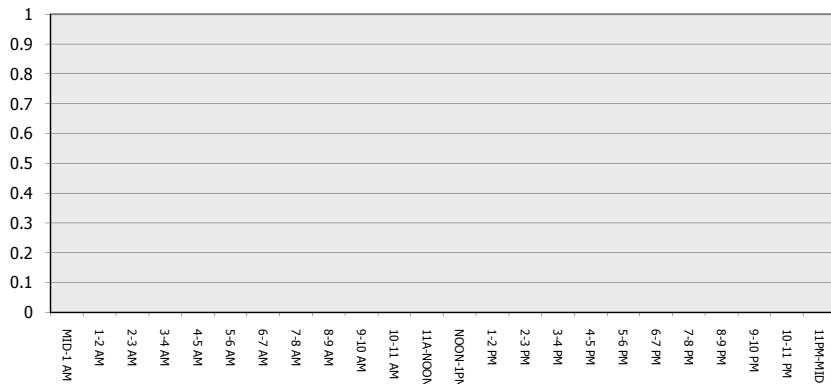
**Main Route - Traffic Demand (Vehicles Per Hour)**



**Main Route Average Delay Per Vehicle (Minutes)**



**Main Route - Average Queue Length (Vehicles)**



**Main Route - Average Speed (MPH)**

