

STH 441: CTH 00 TO CTH CE (OUTAGAMIE COUNTY) NIGHTTIME CLOSURE DIVERSION ROUTE: CTH CE - CTH N - CTH 00	MAY
	Analyzed for 2009 Construction Season

SUMMARY OF TRAFFIC MODEL OUTPUT

FRIDAY SOUTHBOUND DIRECTION

TIME OF DAY	FLOWS AND CAPACITY IN VEH/HR										AVERAGE SPEEDS IN MPH				
	MAIN ROUTE		ALTERNATE ROUTE		SITE CAPA CITY	FLOW MAIN ROUTE	FLOW DIVER -TING	TOTAL DIVN FLOW	AV.DEL PER VEH (MINS)	AVERAGE QUEUE (VEH)	MAIN ROUTE		ALTERNATE ROUTE		
	DEMAND FLOW	PCT HEAVY	NORMAL FLOW	PCT HEAVY							WITHOUT WORK ZN	WITH WORK ZN	SITE	WITHOUT WORK ZN	WITH WORK ZN
MID-1 AM	208	0.0	49	0.0	1500	208	0	49	0.44	0	66.0	53.1	44.6	24.5	24.5
1-2 AM	149	0.0	41	0.0	1500	149	0	41	0.44	0	66.1	53.3	44.9	24.5	24.5
2-3 AM	110	0.0	36	0.0	1500	110	0	36	0.43	0	66.2	53.4	45.0	24.6	24.6
3-4 AM	120	0.0	43	0.0	1500	120	0	43	0.43	0	66.1	53.4	45.0	24.5	24.5
4-5 AM	182	0.0	118	0.0	1500	182	0	118	0.44	0	66.1	53.2	44.8	23.9	23.9
5-6 AM	435	0.0	305	0.0	OFF	435	0	305	0.00	0	65.6	65.6	65.6	22.5	22.5
6-7 AM	956	0.0	620	0.0	OFF	956	0	620	0.00	0	64.6	64.6	64.6	20.1	20.1
7-8 AM	1257	0.0	904	0.0	OFF	1257	0	904	0.00	0	64.0	64.0	64.0	17.9	17.9
8-9 AM	1316	0.0	567	0.0	OFF	1316	0	567	0.00	0	64.0	64.0	64.0	20.5	20.5
9-10 AM	1406	0.0	435	0.0	OFF	1406	0	435	0.00	0	63.8	63.8	63.8	21.5	21.5
10-11 AM	1472	0.0	464	0.0	OFF	1472	0	464	0.00	0	63.7	63.7	63.7	21.3	21.3
11A-NOON	1470	0.0	495	0.0	OFF	1470	0	495	0.00	0	63.7	63.7	63.7	21.1	21.1
NOON-1PM	1583	0.0	519	0.0	OFF	1583	0	519	0.00	0	63.5	63.5	63.5	20.9	20.9
1-2 PM	1772	0.0	557	0.0	OFF	1772	0	557	0.00	0	63.1	63.1	63.1	20.6	20.6
2-3 PM	1839	0.0	564	0.0	OFF	1839	0	564	0.00	0	63.0	63.0	63.0	20.5	20.5
3-4 PM	1955	0.0	673	0.0	OFF	1955	0	673	0.00	0	62.7	62.7	62.7	19.7	19.7
4-5 PM	2249	0.0	710	0.0	OFF	2249	0	710	0.00	0	62.2	62.2	62.2	19.4	19.4
5-6 PM	2300	0.0	653	0.0	OFF	2300	0	653	0.00	0	62.1	62.1	62.1	19.8	19.8
6-7 PM	2016	0.0	475	0.0	OFF	2016	0	475	0.00	0	62.7	62.7	62.7	21.2	21.2
7-8 PM	1264	0.0	315	0.0	1500	1264	0	315	0.72	0	64.0	46.3	36.5	22.4	22.4
8-9 PM	864	0.0	275	0.0	1500	864	0	275	0.51	0	64.8	50.9	42.2	22.7	22.7
9-10 PM	728	0.0	237	0.0	1500	728	0	237	0.49	0	65.0	51.3	42.7	23.0	23.0
10-11 PM	731	0.0	212	0.0	1500	731	0	212	0.49	0	65.0	51.3	42.7	23.2	23.2
11PM-MID	522	0.0	132	0.0	1500	522	0	132	0.47	0	65.4	52.0	43.4	23.8	23.8

"OFF" INDICATES NO ROAD WORK (ALL LANES OPEN TO TRAFFIC)

----- SITE BREAKDOWN DELAYS -----	
BREAKDOWN DURATION (MINS)	0
RANGE OF QUEUE DELAY - MIN	0.0
(VEH-H) MAX	0.0
RANGE OF DIVN DELAY - MIN	0.0
(VEH-H) MAX	0.0
AV BREAKDOWNS PER DAY	0.00
AV QUEUE DELAY/DAY (VEH-H)	0.0
AV DIVN DELAY/DAY (VEH-H)	0.0
AV TOTAL DELAY/DAY (VEH-H)	0.0

----- SITE ACCIDENT DELAYS -----	
ACCIDENT DURATION (MINS)	0
RANGE OF QUEUE DELAY - MIN	0.0
(VEH-H) MAX	0.0
RANGE OF DIVN DELAY - MIN	0.0
(VEH-H) MAX	0.0
AV ACCIDENTS PER DAY	0.00
AV QUEUE DELAY/DAY (VEH-H)	0.0
AV DIVN DELAY/DAY (VEH-H)	0.0
AV TOTAL DELAY/DAY (VEH-H)	0.0

AVERAGE ACCIDENT NUMBERS (PIA/DAY)	
MAIN ROUTE WITHOUT WORKS	0.0086
MAIN ROUTE WITH WORKS	0.0082
DIVERSION	0.0696

PIA: Personal Injury Accidents

IMPACTS ON ROAD USERS	
ROAD USER COSTS PER DAY (DOLLARS)	\$575
CONGESTED HOURS PER DAY*	0

*Delays Exceeding 15 Minutes

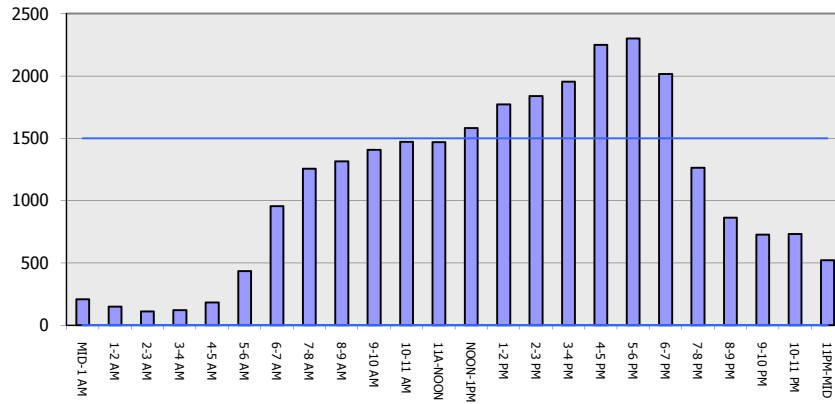
STH 441: CTH 00 TO CTH CE (OUTAGAMIE COUNTY)
NIGHTTIME CLOSURE
DIVERSION ROUTE: CTH CE - CTH N - CTH 00

MAY
 Analyzed for 2009
 Construction Season

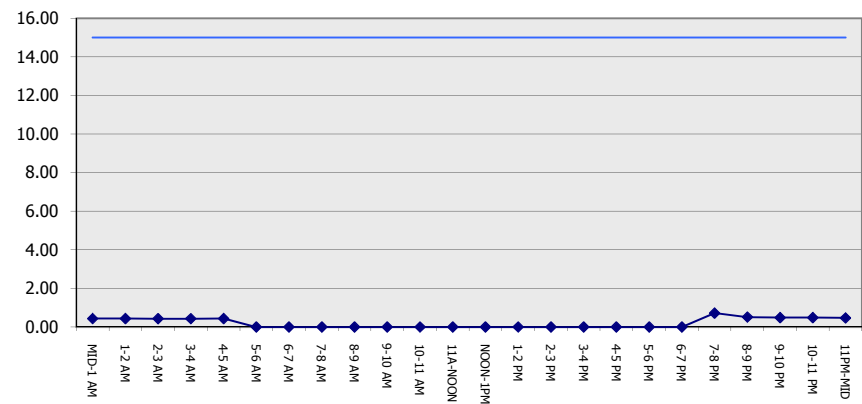
GRAPHICAL REPRESENTATION OF TRAFFIC MODEL INPUT AND OUTPUT

FRIDAY SOUTHBOUND DIRECTION

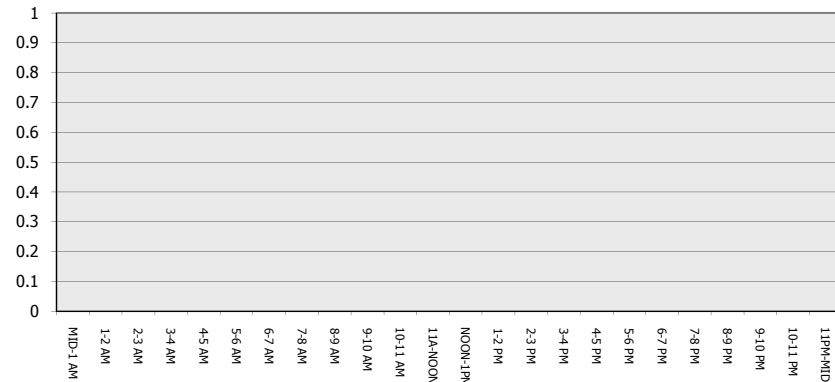
Main Route - Traffic Demand (Vehicles Per Hour)



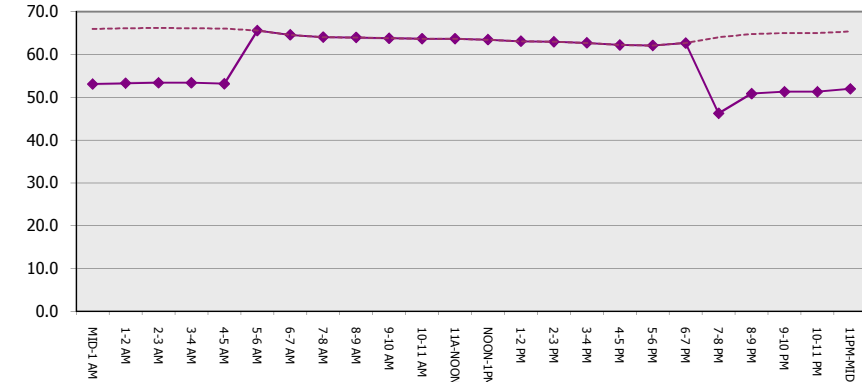
Main Route Average Delay Per Vehicle (Minutes)



Main Route - Average Queue Length (Vehicles)



Main Route - Average Speed (MPH)



**STH 441: CTH 00 TO CTH CE (OUTAGAMIE COUNTY)
NIGHTTIME CLOSURE
DIVERSION ROUTE: CTH CE - CTH N - CTH 00**

MAY
Analyzed for 2009
Construction Season

SUMMARY OF TRAFFIC MODEL OUTPUT
FRIDAY NORTHBOUND DIRECTION

TIME OF DAY	FLOWS AND CAPACITY IN VEH/HR								AVERAGE SPEEDS IN MPH						
	MAIN		DIVERSION		SITE CAPA CITY	FLOW MAIN ROUTE	FLOW DIVER -TING	TOTAL DIVN FLOW	AV.DEL PER VEH (MINS)	AVERAGE QUEUE (VEH)	MAIN ROUTE		SITE	ALTERNATE ROUTE	
	DEMAND FLOW	PCT HEAVY	NORMAL FLOW	PCT HEAVY							WITHOUT WORK ZN	WITH WORK ZN		WITHOUT WORK ZN	WITH WORK ZN
MID-1 AM	143	0.0	82	0.0	1500	143	0	82	0.44	0	66.1	53.3	44.9	24.2	24.2
1-2 AM	97	0.0	50	0.0	1500	97	0	50	0.43	0	66.2	53.5	45.1	24.5	24.5
2-3 AM	100	0.0	43	0.0	1500	100	0	43	0.43	0	66.2	53.5	45.1	24.5	24.5
3-4 AM	134	0.0	35	0.0	1500	134	0	35	0.44	0	66.1	53.3	45.0	24.6	24.6
4-5 AM	241	0.0	47	0.0	1500	241	0	47	0.45	0	66.0	53.0	44.5	24.5	24.5
5-6 AM	518	0.0	182	0.0	OFF	518	0	182	0.00	0	65.4	65.4	65.4	23.4	23.4
6-7 AM	884	0.0	505	0.0	OFF	884	0	505	0.00	0	64.7	64.7	64.7	21.0	21.0
7-8 AM	1057	0.0	740	0.0	OFF	1057	0	740	0.00	0	64.4	64.4	64.4	19.2	19.2
8-9 AM	950	0.0	538	0.0	OFF	950	0	538	0.00	0	64.6	64.6	64.6	20.7	20.7
9-10 AM	880	0.0	453	0.0	OFF	880	0	453	0.00	0	64.8	64.8	64.8	21.4	21.4
10-11 AM	903	0.0	510	0.0	OFF	903	0	510	0.00	0	64.7	64.7	64.7	20.9	20.9
11A-NOON	1045	0.0	571	0.0	OFF	1045	0	571	0.00	0	64.5	64.5	64.5	20.4	20.4
NOON-1PM	1113	0.0	596	0.0	OFF	1113	0	596	0.00	0	64.3	64.3	64.3	20.2	20.2
1-2 PM	1342	0.0	646	0.0	OFF	1342	0	646	0.00	0	63.9	63.9	63.9	19.9	19.9
2-3 PM	1625	0.0	856	0.0	OFF	1625	0	856	0.00	0	63.3	63.3	63.3	18.3	18.3
3-4 PM	1845	0.0	996	0.0	OFF	1845	0	996	0.00	0	63.0	63.0	63.0	17.2	17.2
4-5 PM	1990	0.0	1137	0.0	OFF	1990	0	1137	0.00	0	62.7	62.7	62.7	16.1	16.1
5-6 PM	1825	0.0	980	0.0	OFF	1825	0	980	0.00	0	63.0	63.0	63.0	17.3	17.3
6-7 PM	1359	0.0	653	0.0	OFF	1359	0	653	0.00	0	63.8	63.8	63.8	19.8	19.8
7-8 PM	978	0.0	455	0.0	1500	978	0	455	0.52	0	64.6	50.5	41.7	21.4	21.4
8-9 PM	840	0.0	407	0.0	1500	840	0	407	0.50	0	64.8	50.9	42.2	21.7	21.7
9-10 PM	716	0.0	348	0.0	1500	716	0	348	0.49	0	65.1	51.4	42.7	22.2	22.2
10-11 PM	567	0.0	321	0.0	1500	567	0	321	0.48	0	65.3	51.9	43.2	22.4	22.4
11PM-MID	385	0.0	195	0.0	1500	385	0	195	0.46	0	65.6	52.5	44.0	23.3	23.3

"OFF" INDICATES NO ROAD WORK (ALL LANES OPEN TO TRAFFIC)

----- SITE BREAKDOWN DELAYS -----	
BREAKDOWN DURATION (MINS)	0
RANGE OF QUEUE DELAY - MIN	0.0
(VEH-H) MAX	0.0
RANGE OF DIVN DELAY - MIN	0.0
(VEH-H) MAX	0.0
AV BREAKDOWNS PER DAY	0.00
AV QUEUE DELAY/DAY (VEH-H)	0.0
AV DIVN DELAY/DAY (VEH-H)	0.0
AV TOTAL DELAY/DAY (VEH-H)	0.0

----- SITE ACCIDENT DELAYS -----	
ACCIDENT DURATION (MINS)	0
RANGE OF QUEUE DELAY - MIN	0.0
(VEH-H) MAX	0.0
RANGE OF DIVN DELAY - MIN	0.0
(VEH-H) MAX	0.0
AV ACCIDENTS PER DAY	0.00
AV QUEUE DELAY/DAY (VEH-H)	0.0
AV DIVN DELAY/DAY (VEH-H)	0.0
AV TOTAL DELAY/DAY (VEH-H)	0.0

AVERAGE ACCIDENT NUMBERS (PIA/DAY)	
MAIN ROUTE WITHOUT WORKS	0.0069
MAIN ROUTE WITH WORKS	0.0066
DIVERSION	0.0840

PIA: Personal Injury Accidents

IMPACTS ON ROAD USERS	
ROAD USER COSTS PER DAY (DOLLARS)	\$444
CONGESTED HOURS PER DAY*	0

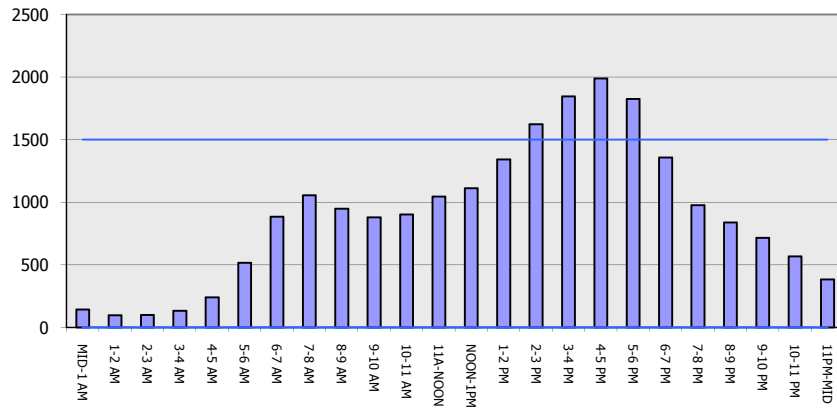
*Delays Exceeding 15 Minutes

STH 441: CTH 00 TO CTH CE (OUTAGAMIE COUNTY)
NIGHTTIME CLOSURE
DIVERSION ROUTE: CTH CE - CTH N - CTH 00

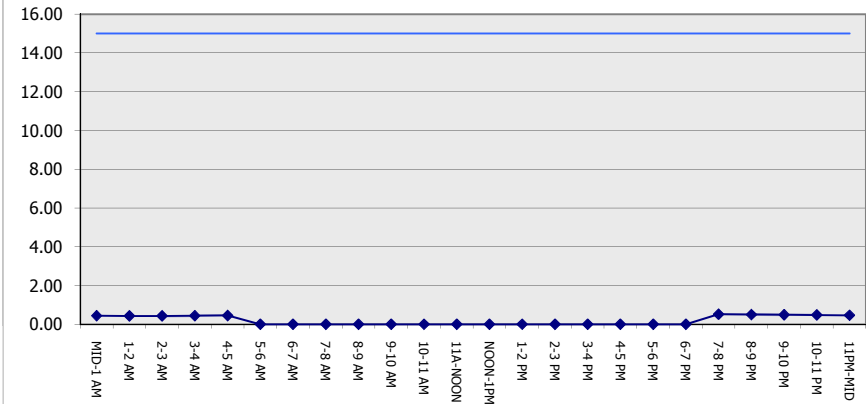
MAY
 Analyzed for 2009
 Construction Season

GRAPHICAL REPRESENTATION OF TRAFFIC MODEL INPUT AND OUTPUT
FRIDAY NORTHBOUND DIRECTION

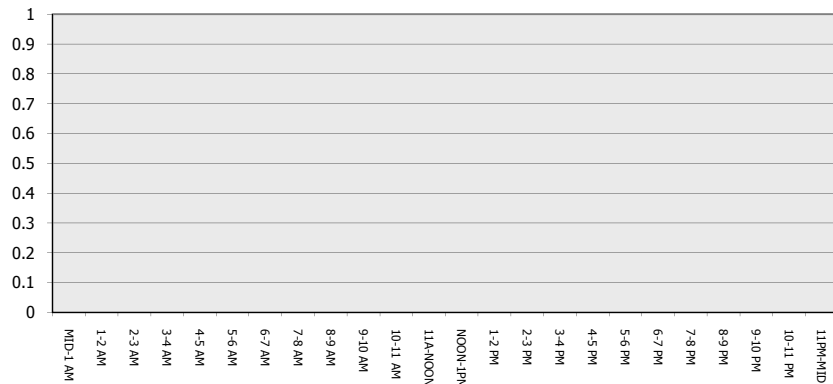
Main Route - Traffic Demand (Vehicles Per Hour)



Main Route Average Delay Per Vehicle (Minutes)



Main Route - Average Queue Length (Vehicles)



Main Route - Average Speed (MPH)

