

**USH 41: STH 15 TO STH 441 (OUTAGAMIE COUNTY)
NIGHTTIME CLOSURE
NO DIVERSION ROUTE (MAX QUEUE METHOD)**

OCTOBER
Analyzed for 2009
Construction Season

SUMMARY OF TRAFFIC MODEL OUTPUT
SUNDAY SOUTHBOUND DIRECTION

TIME OF DAY	FLOWS AND CAPACITY IN VEH/HR						AVERAGE SPEEDS IN MPH				
	MAIN ROUTE		SITE CAPA CITY	FLOW		AV.DEL PER VEH (MINS)	AVERAGE QUEUE (VEH)	MAIN ROUTE		SITE	
	DEMAND FLOW	PCT HEAVY		MAIN ROUTE	'DIVER TED'			WITHOUT WORK ZONE	WITH WORK ZONE		
MID-1 AM	398	0.0	1499	398	0	2.54	104	65.6	44.6	43.3	
1-2 AM	191	0.0	1500	191	0	0.44	0	66.0	61.0	44.7	
2-3 AM	181	0.0	1500	181	0	0.44	0	66.1	61.0	44.8	
3-4 AM	109	0.0	1500	109	0	0.43	0	66.2	61.2	45.0	
4-5 AM	119	0.0	1500	119	0	0.43	0	66.1	61.2	45.0	
5-6 AM	216	0.0	1500	216	0	0.44	0	66.0	60.9	44.6	
6-7 AM	266	0.0	1500	266	0	0.45	0	65.9	60.8	44.4	
7-8 AM	358	0.0	1500	358	0	0.46	0	65.7	60.5	44.0	
8-9 AM	764	0.0	1500	764	0	0.50	0	65.0	59.6	42.5	
9-10 AM	1099	0.0	OFF	1099	0	0.00	0	64.3	64.3	64.3	
10-11 AM	1584	0.0	OFF	1584	0	0.00	0	63.4	63.4	63.4	
11AM-NOON	1732	0.0	OFF	1732	0	0.00	0	63.2	63.2	63.2	
NOON-1PM	1897	0.0	OFF	1897	0	0.00	0	62.8	62.8	62.8	
1-2 PM	1915	0.0	OFF	1915	0	0.00	0	62.8	62.8	62.8	
2-3 PM	1859	0.0	OFF	1859	0	0.00	0	62.9	62.9	62.9	
3-4 PM	1895	0.0	OFF	1895	0	0.00	0	62.8	62.8	62.8	
4-5 PM	1886	0.0	OFF	1886	0	0.00	0	62.8	62.8	62.8	
5-6 PM	1556	0.0	OFF	1556	0	0.00	0	63.5	63.5	63.5	
6-7 PM	1264	0.0	OFF	1264	0	0.00	0	64.0	64.0	64.0	
7-8 PM	840	0.0	1500	840	0	0.50	0	64.8	59.4	42.2	
8-9 PM	594	0.0	1500	594	0	0.48	0	65.3	60.0	43.2	
9-10 PM	555	0.0	1500	555	0	0.48	0	65.3	60.1	43.3	
10-11 PM	602	0.0	1500	602	0	0.48	0	65.3	59.9	43.1	
11PM-MID	2310	0.0	1499	1918	392	11.50+	304	62.1	20.6	30.8	

"OFF" INDICATES NO ROAD WORK (ALL LANES OPEN TO TRAFFIC)

+ INDICATES QUEUEING EXCEEDS USER-SPECIFIED MAXIMUM LIMIT

----- SITE BREAKDOWN DELAYS -----	
BREAKDOWN DURATION (MINS)	0
RANGE OF QUEUE DELAY - MIN (VEH-H) MAX	0.0
AV BREAKDOWNS PER DAY	0.00
AV QUEUE DELAY/DAY (VEH-H)	0.0
AV TOTAL DELAY/DAY (VEH-H)	0.0

----- SITE ACCIDENT DELAYS -----	
BREAKDOWN DURATION (MINS)	0
RANGE OF QUEUE DELAY - MIN (VEH-H) MAX	0
AV BREAKDOWNS PER DAY	0
AV QUEUE DELAY/DAY (VEH-H)	0
AV TOTAL DELAY/DAY (VEH-H)	0

AVERAGE ACCIDENT NUMBERS (PIA/DAY)	
MAIN ROUTE WITHOUT WORKS	0.0227
MAIN ROUTE WITH WORKS	0.0219
'DIVERSION'	0.0009
PIA: Personal Injury Accidents	
IMPACTS ON ROAD USERS	
ROAD USER COSTS PER DAY	\$7,229
CONGESTED HOURS PER DAY*	1

*Delays Exceeding User-Specified Maximum

USH 41: STH 15 TO STH 441 (OUTAGAMIE COUNTY)
NIGHTTIME CLOSURE
NO DIVERSION ROUTE (MAX QUEUE METHOD)

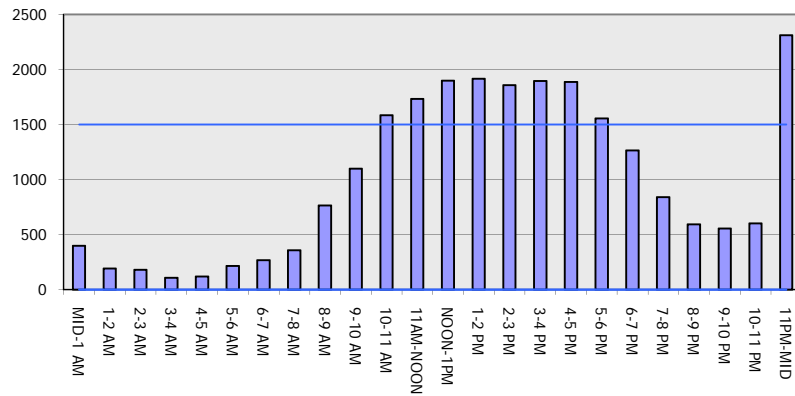
OCTOBER

Analyzed for 2009
 Construction Season

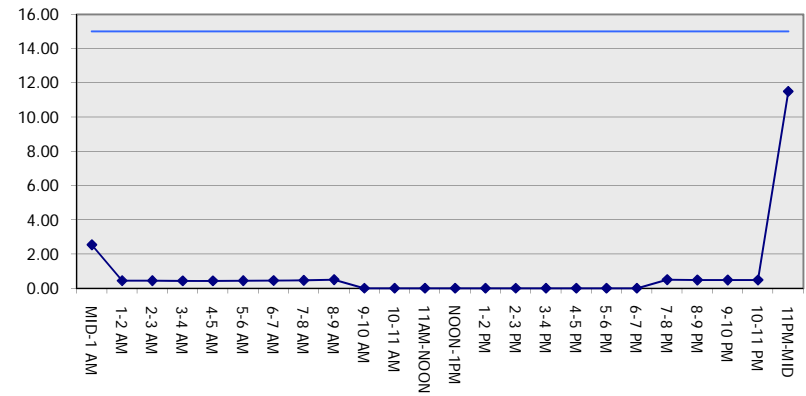
GRAPHICAL REPRESENTATION OF TRAFFIC MODEL INPUT AND OUTPUT

SUNDAY SOUTHBOUND DIRECTION

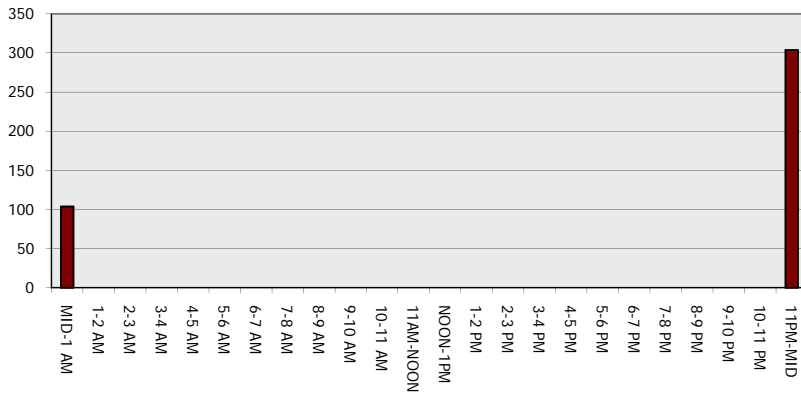
Main Route - Traffic Demand (Vehicles Per Hour)



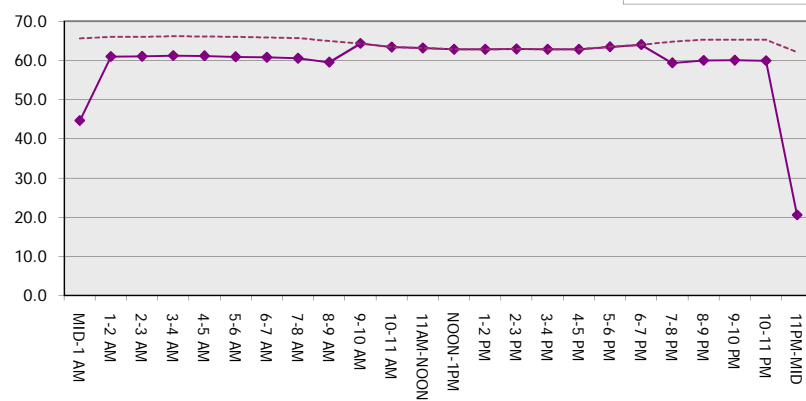
Main Route Average Delay Per Vehicle (Minutes)



Main Route - Average Queue Length (Vehicles)



Main Route - Average Speed (MPH)



USH 41: STH 15 TO STH 441 (OUTAGAMIE COUNTY) NIGHTTIME CLOSURE NO DIVERSION ROUTE (MAX QUEUE METHOD)	OCTOBER
	Analyzed for 2009 Construction Season

SUMMARY OF TRAFFIC MODEL OUTPUT

SUNDAY NORTHBOUND DIRECTION

TIME OF DAY	FLOWS AND CAPACITY IN VEH/HR							AVERAGE SPEEDS IN MPH		
	MAIN ROUTE		SITE CAPA CITY	FLOW		AV.DEL PER VEH (MINS)	AVERAGE QUEUE (VEH)	MAIN ROUTE		SITE
	DEMAND FLOW	PCT HEAVY		MAIN ROUTE	'DIVER TED'			WITHOUT WORK ZONE	WITH WORK ZONE	
MID-1 AM	343	0.0	1500	343	0	0.46	0	65.8	60.6	44.1
1-2 AM	184	0.0	1500	184	0	0.44	0	66.0	61.0	44.8
2-3 AM	221	0.0	1500	221	0	0.44	0	66.0	60.9	44.6
3-4 AM	91	0.0	1500	91	0	0.43	0	66.2	61.3	45.1
4-5 AM	103	0.0	1500	103	0	0.43	0	66.2	61.2	45.1
5-6 AM	197	0.0	1500	197	0	0.44	0	66.0	61.0	44.7
6-7 AM	251	0.0	1500	251	0	0.45	0	65.9	60.9	44.5
7-8 AM	353	0.0	1500	353	0	0.46	0	65.7	60.6	44.1
8-9 AM	666	0.0	1500	666	0	0.49	0	65.1	59.8	42.9
9-10 AM	913	0.0	OFF	913	0	0.00	0	64.7	64.7	64.7
10-11 AM	1218	0.0	OFF	1218	0	0.00	0	64.1	64.1	64.1
11AM-NOON	1625	0.0	OFF	1625	0	0.00	0	63.3	63.3	63.3
NOON-1PM	1850	0.0	OFF	1850	0	0.00	0	63.0	63.0	63.0
1-2 PM	1957	0.0	OFF	1957	0	0.00	0	62.7	62.7	62.7
2-3 PM	2436	0.0	OFF	2436	0	0.00	0	61.5	61.5	61.5
3-4 PM	3029	0.0	OFF	3029	0	0.00	0	55.5	55.5	55.5
4-5 PM	2568	0.0	OFF	2568	0	0.00	0	60.2	60.2	60.2
5-6 PM	1834	0.0	OFF	1834	0	0.00	0	63.0	63.0	63.0
6-7 PM	1337	0.0	OFF	1337	0	0.00	0	63.9	63.9	63.9
7-8 PM	825	0.0	1500	825	0	0.50	0	64.8	59.4	42.3
8-9 PM	579	0.0	1500	579	0	0.48	0	65.3	60.0	43.2
9-10 PM	477	0.0	1500	477	0	0.47	0	65.5	60.3	43.6
10-11 PM	418	0.0	1500	418	0	0.46	0	65.6	60.4	43.8
11PM-MID	694	0.0	1500	694	0	0.49	0	65.1	59.7	42.8

"OFF" INDICATES NO ROAD WORK (ALL LANES OPEN TO TRAFFIC)

----- SITE BREAKDOWN DELAYS -----	
BREAKDOWN DURATION (MINS)	0
RANGE OF QUEUE DELAY - MIN (VEH-H) MAX	0.0
AV BREAKDOWNS PER DAY	0.00
AV QUEUE DELAY/DAY (VEH-H)	0.0
AV TOTAL DELAY/DAY (VEH-H)	0.0

----- SITE ACCIDENT DELAYS -----	
BREAKDOWN DURATION (MINS)	0
RANGE OF QUEUE DELAY - MIN (VEH-H) MAX	0
AV BREAKDOWNS PER DAY	0
AV QUEUE DELAY/DAY (VEH-H)	0
AV TOTAL DELAY/DAY (VEH-H)	0

AVERAGE ACCIDENT NUMBERS (PIA/DAY)	
MAIN ROUTE WITHOUT WORKS	0.0227
MAIN ROUTE WITH WORKS	0.0223
'DIVERSION'	0.0000

PIA: Personal Injury Accidents

ECONOMIC IMPACT ON ROAD USERS	
ROAD USER COSTS PER DAY	\$618
CONGESTED HOURS PER DAY*	0

*Delays Exceeding User-Specified Maximum

**USH 41: STH 15 TO STH 441 (OUTAGAMIE COUNTY)
NIGHTTIME CLOSURE
NO DIVERSION ROUTE (MAX QUEUE METHOD)**

OCTOBER

Analyzed for 2009
Construction Season

GRAPHICAL REPRESENTATION OF TRAFFIC MODEL INPUT AND OUTPUT
SUNDAY NORTHBOUND DIRECTION

