

USH 41: STH 15 TO STH 441 (OUTAGAMIE COUNTY) NIGHTTIME CLOSURE NO DIVERSION ROUTE (MAX QUEUE METHOD)	OCTOBER
	Analyzed for 2009 Construction Season

SUMMARY OF TRAFFIC MODEL OUTPUT

MON-THUR SOUTHBOUND DIRECTION

TIME OF DAY	FLOWS AND CAPACITY IN VEH/HR						AVERAGE SPEEDS IN MPH				
	MAIN ROUTE		SITE CAPA CITY	FLOW		AV.DEL PER VEH (MINS)	AVERAGE QUEUE (VEH)	MAIN ROUTE		SITE	
	DEMAND FLOW	PCT HEAVY		MAIN ROUTE	'DIVER TED'			WITHOUT WORK ZONE	WITH WORK ZONE		
MID-1 AM	851	0.0	1500	851	0	0.50	0	64.8	59.3	42.2	
1-2 AM	328	0.0	1500	328	0	0.45	0	65.8	60.7	44.2	
2-3 AM	125	0.0	1500	125	0	0.43	0	66.1	61.2	45.0	
3-4 AM	162	0.0	1500	162	0	0.44	0	66.1	61.1	44.8	
4-5 AM	381	0.0	1500	381	0	0.46	0	65.7	60.5	44.0	
5-6 AM	1028	0.0	OFF	1028	0	0.00	0	64.5	64.5	64.5	
6-7 AM	2215	0.0	OFF	2215	0	0.00	0	62.3	62.3	62.3	
7-8 AM	3395	0.0	OFF	3395	0	0.00	0	51.7	51.7	51.7	
8-9 AM	2353	0.0	OFF	2353	0	0.00	0	62.0	62.0	62.0	
9-10 AM	1735	0.0	OFF	1735	0	0.00	0	63.2	63.2	63.2	
10-11 AM	1686	0.0	OFF	1686	0	0.00	0	63.2	63.2	63.2	
11AM-NOON	1802	0.0	OFF	1802	0	0.00	0	63.0	63.0	63.0	
NOON-1PM	1830	0.0	OFF	1830	0	0.00	0	63.0	63.0	63.0	
1-2 PM	1899	0.0	OFF	1899	0	0.00	0	62.8	62.8	62.8	
2-3 PM	1963	0.0	OFF	1963	0	0.00	0	62.7	62.7	62.7	
3-4 PM	2278	0.0	OFF	2278	0	0.00	0	62.2	62.2	62.2	
4-5 PM	2580	0.0	OFF	2580	0	0.00	0	60.1	60.1	60.1	
5-6 PM	2489	0.0	OFF	2489	0	0.00	0	61.0	61.0	61.0	
6-7 PM	1508	0.0	OFF	1508	0	0.00	0	63.6	63.6	63.6	
7-8 PM	994	0.0	1500	994	0	0.52	0	64.5	58.9	41.7	
8-9 PM	764	0.0	1500	764	0	0.50	0	65.0	59.6	42.5	
9-10 PM	662	0.0	1500	662	0	0.49	0	65.1	59.8	42.9	
10-11 PM	453	0.0	1500	453	0	0.47	0	65.5	60.4	43.7	
11PM-MID	266	0.0	1500	266	0	0.45	0	65.9	60.8	44.4	

"OFF" INDICATES NO ROAD WORK (ALL LANES OPEN TO TRAFFIC)

----- SITE BREAKDOWN DELAYS -----	
BREAKDOWN DURATION (MINS)	0
RANGE OF QUEUE DELAY - MIN (VEH-H) MAX	0.0
AV BREAKDOWNS PER DAY	0.00
AV QUEUE DELAY/DAY (VEH-H)	0.0
AV TOTAL DELAY/DAY (VEH-H)	0.0

----- SITE ACCIDENT DELAYS -----	
BREAKDOWN DURATION (MINS)	0
RANGE OF QUEUE DELAY - MIN (VEH-H) MAX	0
AV BREAKDOWNS PER DAY	0
AV QUEUE DELAY/DAY (VEH-H)	0
AV TOTAL DELAY/DAY (VEH-H)	0

AVERAGE ACCIDENT NUMBERS (PIA/DAY)	
MAIN ROUTE WITHOUT WORKS	0.0317
MAIN ROUTE WITH WORKS	0.0314
'DIVERSION'	0.0000
PIA: Personal Injury Accidents	
IMPACTS ON ROAD USERS	
ROAD USER COSTS PER DAY	\$494
CONGESTED HOURS PER DAY*	0

*Delays Exceeding User-Specified Maximum

**USH 41: STH 15 TO STH 441 (OUTAGAMIE COUNTY)
NIGHTTIME CLOSURE
NO DIVERSION ROUTE (MAX QUEUE METHOD)**

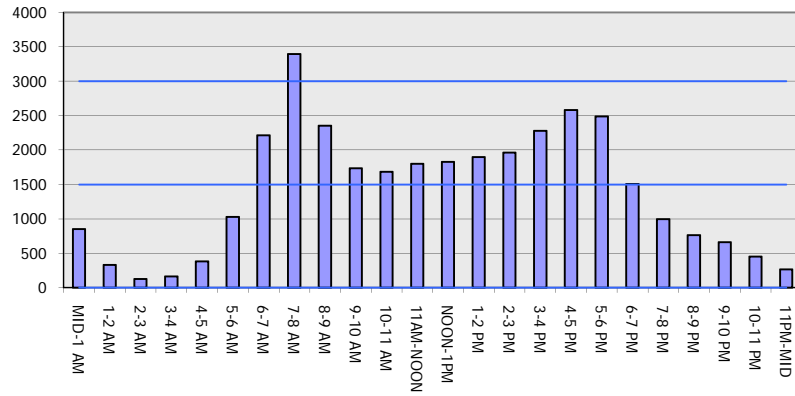
OCTOBER

Analyzed for 2009
Construction Season

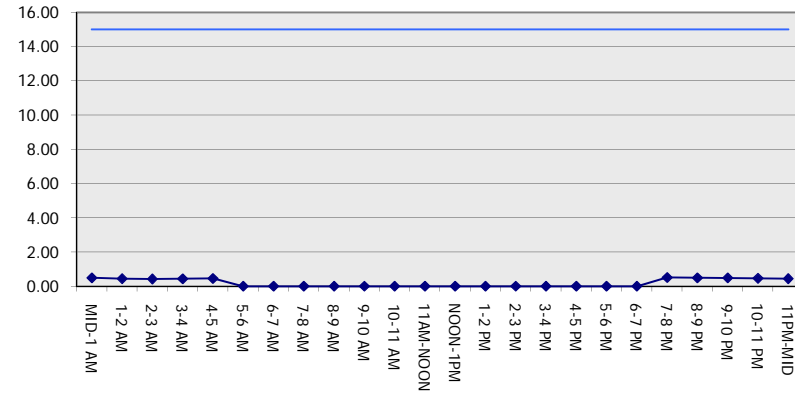
GRAPHICAL REPRESENTATION OF TRAFFIC MODEL INPUT AND OUTPUT

MON-THUR SOUTHBOUND DIRECTION

Main Route - Traffic Demand (Vehicles Per Hour)



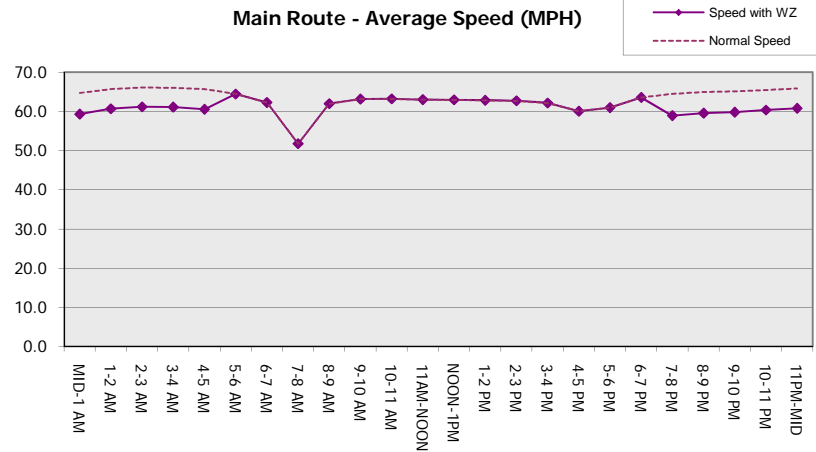
Main Route Average Delay Per Vehicle (Minutes)



Main Route - Average Queue Length (Vehicles)



Main Route - Average Speed (MPH)



USH 41: STH 15 TO STH 441 (OUTAGAMIE COUNTY) NIGHTTIME CLOSURE NO DIVERSION ROUTE (MAX QUEUE METHOD)	OCTOBER
	Analyzed for 2009 Construction Season

SUMMARY OF TRAFFIC MODEL OUTPUT

MON-THUR NORTHBOUND DIRECTION

TIME OF DAY	FLOWS AND CAPACITY IN VEH/HR						AVERAGE SPEEDS IN MPH			
	MAIN ROUTE		SITE CAPA CITY	FLOW		AV.DEL PER VEH (MINS)	AVERAGE QUEUE (VEH)	MAIN ROUTE		SITE
	DEMAND FLOW	PCT HEAVY		MAIN ROUTE	'DIVER TED'			WITHOUT WORK ZONE	WITH WORK ZONE	
MID-1 AM	231	0.0	1500	231	0	0.44	0	66.0	60.9	44.6
1-2 AM	190	0.0	1500	190	0	0.44	0	66.0	61.0	44.7
2-3 AM	197	0.0	1500	197	0	0.44	0	66.0	61.0	44.7
3-4 AM	170	0.0	1500	170	0	0.44	0	66.1	61.0	44.8
4-5 AM	274	0.0	1500	274	0	0.45	0	65.9	60.8	44.4
5-6 AM	700	0.0	OFF	700	0	0.00	0	65.1	65.1	65.1
6-7 AM	1440	0.0	OFF	1440	0	0.00	0	63.7	63.7	63.7
7-8 AM	2218	0.0	OFF	2218	0	0.00	0	62.2	62.2	62.2
8-9 AM	1634	0.0	OFF	1634	0	0.00	0	63.3	63.3	63.3
9-10 AM	1429	0.0	OFF	1429	0	0.00	0	63.7	63.7	63.7
10-11 AM	1477	0.0	OFF	1477	0	0.00	0	63.7	63.7	63.7
11AM-NOON	1593	0.0	OFF	1593	0	0.00	0	63.4	63.4	63.4
NOON-1PM	1677	0.0	OFF	1677	0	0.00	0	63.3	63.3	63.3
1-2 PM	1740	0.0	OFF	1740	0	0.00	0	63.2	63.2	63.2
2-3 PM	2098	0.0	OFF	2098	0	0.00	0	62.5	62.5	62.5
3-4 PM	2724	0.0	OFF	2724	0	0.00	0	58.6	58.6	58.6
4-5 PM	3149	0.0	OFF	3149	0	0.00	0	54.2	54.2	54.2
5-6 PM	2771	0.0	OFF	2771	0	0.00	0	58.1	58.1	58.1
6-7 PM	1632	0.0	OFF	1632	0	0.00	0	63.3	63.3	63.3
7-8 PM	1178	0.0	1500	1178	0	0.61	0	64.2	57.8	39.2
8-9 PM	1073	0.0	1500	1073	0	0.53	0	64.4	58.7	41.4
9-10 PM	817	0.0	1500	817	0	0.50	0	64.8	59.4	42.4
10-11 PM	437	0.0	1500	437	0	0.46	0	65.6	60.4	43.7
11PM-MID	272	0.0	1500	272	0	0.45	0	65.9	60.8	44.4

"OFF" INDICATES NO ROAD WORK (ALL LANES OPEN TO TRAFFIC)

----- SITE BREAKDOWN DELAYS -----	
BREAKDOWN DURATION (MINS)	0
RANGE OF QUEUE DELAY - MIN (VEH-H) MAX	0.0
AV BREAKDOWNS PER DAY	0.00
AV QUEUE DELAY/DAY (VEH-H)	0.0
AV TOTAL DELAY/DAY (VEH-H)	0.0

----- SITE ACCIDENT DELAYS -----	
BREAKDOWN DURATION (MINS)	0
RANGE OF QUEUE DELAY - MIN (VEH-H) MAX	0
AV BREAKDOWNS PER DAY	0
AV QUEUE DELAY/DAY (VEH-H)	0
AV TOTAL DELAY/DAY (VEH-H)	0

AVERAGE ACCIDENT NUMBERS (PIA/DAY)	
MAIN ROUTE WITHOUT WORKS	0.0292
MAIN ROUTE WITH WORKS	0.0289
'DIVERSION'	0.0000

PIA: Personal Injury Accidents

ECONOMIC IMPACT ON ROAD USERS	
ROAD USER COSTS PER DAY	\$507
CONGESTED HOURS PER DAY*	0

*Delays Exceeding User-Specified Maximum

**USH 41: STH 15 TO STH 441 (OUTAGAMIE COUNTY)
NIGHTTIME CLOSURE
NO DIVERSION ROUTE (MAX QUEUE METHOD)**

OCTOBER

Analyzed for 2009
Construction Season

**GRAPHICAL REPRESENTATION OF TRAFFIC MODEL INPUT AND OUTPUT
MON-THUR NORTHBOUND DIRECTION**

