

USH 41: STH 15 TO STH 441 (OUTAGAMIE COUNTY) NIGHTTIME CLOSURE NO DIVERSION ROUTE (MAX QUEUE METHOD)	AUGUST
	Analyzed for 2009 Construction Season

SUMMARY OF TRAFFIC MODEL OUTPUT

MON-THUR SOUTHBOUND DIRECTION

TIME OF DAY	FLOWS AND CAPACITY IN VEH/HR						AVERAGE SPEEDS IN MPH			
	MAIN ROUTE		SITE CAPA CITY	FLOW		AV.DEL PER VEH (MINS)	AVERAGE QUEUE (VEH)	MAIN ROUTE		SITE
	DEMAND FLOW	PCT HEAVY		MAIN ROUTE	'DIVER TED'			WITHOUT WORK ZONE	WITH WORK ZONE	
MID-1 AM	218	0.0	1500	218	0	0.44	0	66.0	60.9	44.6
1-2 AM	131	0.0	1500	131	0	0.44	0	66.1	61.2	45.0
2-3 AM	112	0.0	1500	112	0	0.43	0	66.2	61.2	45.0
3-4 AM	179	0.0	1500	179	0	0.44	0	66.1	61.0	44.8
4-5 AM	409	0.0	1500	409	0	0.46	0	65.6	60.4	43.8
5-6 AM	1127	0.0	OFF	1127	0	0.00	0	64.3	64.3	64.3
6-7 AM	2136	0.0	OFF	2136	0	0.00	0	62.4	62.4	62.4
7-8 AM	3063	0.0	OFF	3063	0	0.00	0	55.1	55.1	55.1
8-9 AM	2171	0.0	OFF	2171	0	0.00	0	62.3	62.3	62.3
9-10 AM	1743	0.0	OFF	1743	0	0.00	0	63.2	63.2	63.2
10-11 AM	1807	0.0	OFF	1807	0	0.00	0	63.0	63.0	63.0
11AM-NOON	1886	0.0	OFF	1886	0	0.00	0	62.8	62.8	62.8
NOON-1PM	2012	0.0	OFF	2012	0	0.00	0	62.7	62.7	62.7
1-2 PM	2078	0.0	OFF	2078	0	0.00	0	62.5	62.5	62.5
2-3 PM	2122	0.0	OFF	2122	0	0.00	0	62.4	62.4	62.4
3-4 PM	2227	0.0	OFF	2227	0	0.00	0	62.2	62.2	62.2
4-5 PM	2625	0.0	OFF	2625	0	0.00	0	59.6	59.6	59.6
5-6 PM	2695	0.0	OFF	2695	0	0.00	0	58.9	58.9	58.9
6-7 PM	1798	0.0	OFF	1798	0	0.00	0	63.0	63.0	63.0
7-8 PM	1122	0.0	1500	1122	0	0.54	0	64.3	58.6	41.1
8-9 PM	951	0.0	1500	951	0	0.51	0	64.6	59.1	41.9
9-10 PM	772	0.0	1500	772	0	0.50	0	65.0	59.5	42.5
10-11 PM	565	0.0	1500	565	0	0.48	0	65.3	60.1	43.3
11PM-MID	432	0.0	1500	432	0	0.46	0	65.6	60.4	43.8

"OFF" INDICATES NO ROAD WORK (ALL LANES OPEN TO TRAFFIC)

----- SITE BREAKDOWN DELAYS -----	
BREAKDOWN DURATION (MINS)	0
RANGE OF QUEUE DELAY - MIN (VEH-H) MAX	0.0
AV BREAKDOWNS PER DAY	0.00
AV QUEUE DELAY/DAY (VEH-H)	0.0
AV TOTAL DELAY/DAY (VEH-H)	0.0

----- SITE ACCIDENT DELAYS -----	
BREAKDOWN DURATION (MINS)	0
RANGE OF QUEUE DELAY - MIN (VEH-H) MAX	0
AV BREAKDOWNS PER DAY	0
AV QUEUE DELAY/DAY (VEH-H)	0
AV TOTAL DELAY/DAY (VEH-H)	0

AVERAGE ACCIDENT NUMBERS (PIA/DAY)	
MAIN ROUTE WITHOUT WORKS	0.0323
MAIN ROUTE WITH WORKS	0.0320
'DIVERSION'	0.0000
<small>PIA: Personal Injury Accidents</small>	
IMPACTS ON ROAD USERS	
ROAD USER COSTS PER DAY	\$509
CONGESTED HOURS PER DAY*	0

*Delays Exceeding User-Specified Maximum

**USH 41: STH 15 TO STH 441 (OUTAGAMIE COUNTY)
NIGHTTIME CLOSURE
NO DIVERSION ROUTE (MAX QUEUE METHOD)**

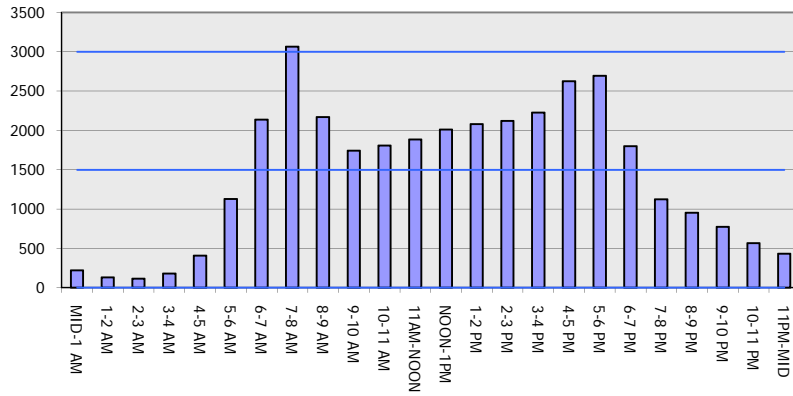
AUGUST

Analyzed for 2009
Construction Season

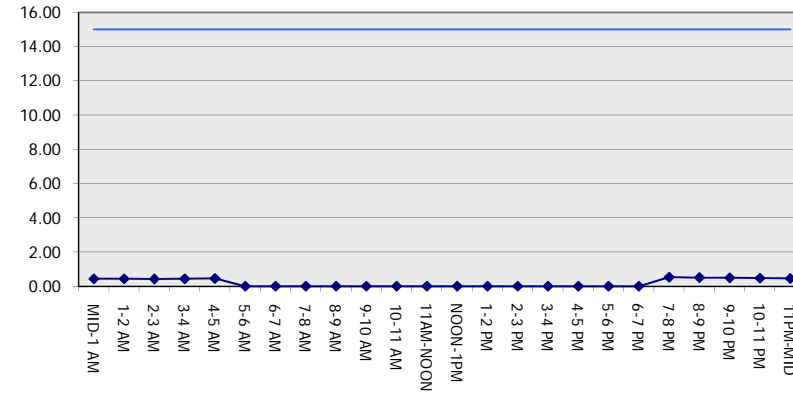
GRAPHICAL REPRESENTATION OF TRAFFIC MODEL INPUT AND OUTPUT

MON-THUR SOUTHBOUND DIRECTION

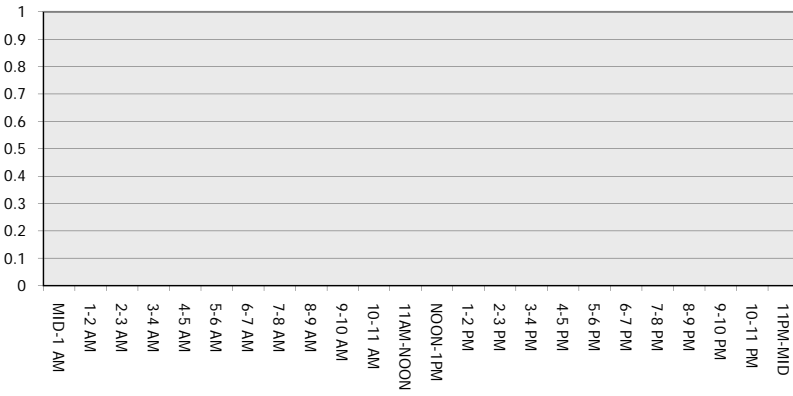
Main Route - Traffic Demand (Vehicles Per Hour)



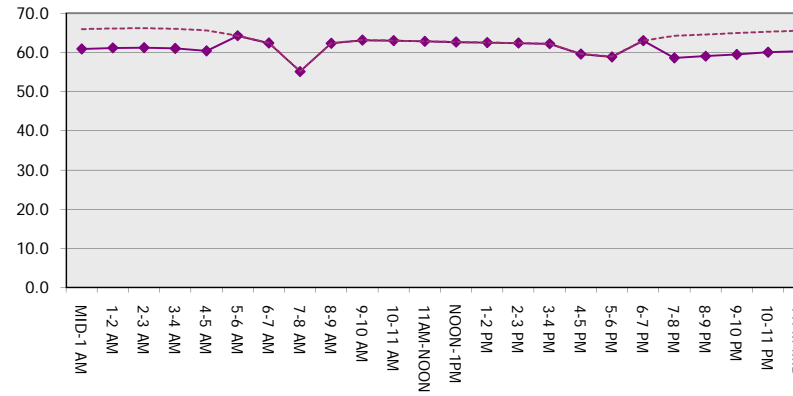
Main Route Average Delay Per Vehicle (Minutes)



Main Route - Average Queue Length (Vehicles)



Main Route - Average Speed (MPH)



USH 41: STH 15 TO STH 441 (OUTAGAMIE COUNTY) NIGHTTIME CLOSURE NO DIVERSION ROUTE (MAX QUEUE METHOD)	AUGUST
	Analyzed for 2009 Construction Season

SUMMARY OF TRAFFIC MODEL OUTPUT

MON-THUR NORTHBOUND DIRECTION

TIME OF DAY	FLOWS AND CAPACITY IN VEH/HR						AVERAGE SPEEDS IN MPH			
	MAIN ROUTE		SITE CAPA CITY	FLOW		AV.DEL PER VEH (MINS)	AVERAGE QUEUE (VEH)	MAIN ROUTE		SITE
	DEMAND FLOW	PCT HEAVY		MAIN ROUTE	'DIVER TED'			WITHOUT WORK ZONE	WITH WORK ZONE	
MID-1 AM	226	0.0	1500	226	0	0.44	0	66.0	60.9	44.6
1-2 AM	139	0.0	1500	139	0	0.44	0	66.1	61.2	45.0
2-3 AM	137	0.0	1500	137	0	0.44	0	66.1	61.2	45.0
3-4 AM	116	0.0	1500	116	0	0.43	0	66.2	61.2	45.0
4-5 AM	237	0.0	1500	237	0	0.45	0	66.0	60.9	44.5
5-6 AM	731	0.0	OFF	731	0	0.00	0	65.0	65.0	65.0
6-7 AM	1416	0.0	OFF	1416	0	0.00	0	63.8	63.8	63.8
7-8 AM	2016	0.0	OFF	2016	0	0.00	0	62.7	62.7	62.7
8-9 AM	1585	0.0	OFF	1585	0	0.00	0	63.4	63.4	63.4
9-10 AM	1498	0.0	OFF	1498	0	0.00	0	63.6	63.6	63.6
10-11 AM	1597	0.0	OFF	1597	0	0.00	0	63.4	63.4	63.4
11AM-NOON	1729	0.0	OFF	1729	0	0.00	0	63.2	63.2	63.2
NOON-1PM	1850	0.0	OFF	1850	0	0.00	0	63.0	63.0	63.0
1-2 PM	1939	0.0	OFF	1939	0	0.00	0	62.8	62.8	62.8
2-3 PM	2276	0.0	OFF	2276	0	0.00	0	62.2	62.2	62.2
3-4 PM	2678	0.0	OFF	2678	0	0.00	0	59.1	59.1	59.1
4-5 PM	3278	0.0	OFF	3278	0	0.00	0	52.9	52.9	52.9
5-6 PM	2837	0.0	OFF	2837	0	0.00	0	57.4	57.4	57.4
6-7 PM	1759	0.0	OFF	1759	0	0.00	0	63.1	63.1	63.1
7-8 PM	1326	0.0	1500	1326	0	0.80	0	63.9	55.8	34.8
8-9 PM	1245	0.0	1500	1245	0	0.70	0	64.1	56.9	37.1
9-10 PM	1051	0.0	1500	1051	0	0.52	0	64.4	58.8	41.5
10-11 PM	696	0.0	1500	696	0	0.49	0	65.1	59.7	42.8
11PM-MID	361	0.0	1500	361	0	0.46	0	65.7	60.5	44.0

"OFF" INDICATES NO ROAD WORK (ALL LANES OPEN TO TRAFFIC)

----- SITE BREAKDOWN DELAYS -----	
BREAKDOWN DURATION (MINS)	0
RANGE OF QUEUE DELAY - MIN (VEH-H) MAX	0.0
AV BREAKDOWNS PER DAY	0.00
AV QUEUE DELAY/DAY (VEH-H)	0.0
AV TOTAL DELAY/DAY (VEH-H)	0.0

----- SITE ACCIDENT DELAYS -----	
BREAKDOWN DURATION (MINS)	0
RANGE OF QUEUE DELAY - MIN (VEH-H) MAX	0
AV BREAKDOWNS PER DAY	0
AV QUEUE DELAY/DAY (VEH-H)	0
AV TOTAL DELAY/DAY (VEH-H)	0

AVERAGE ACCIDENT NUMBERS (PIA/DAY)	
MAIN ROUTE WITHOUT WORKS	0.0307
MAIN ROUTE WITH WORKS	0.0304
'DIVERSION'	0.0000

PIA: Personal Injury Accidents

ECONOMIC IMPACT ON ROAD USERS	
ROAD USER COSTS PER DAY	\$709
CONGESTED HOURS PER DAY*	0

*Delays Exceeding User-Specified Maximum

**USH 41: STH 15 TO STH 441 (OUTAGAMIE COUNTY)
NIGHTTIME CLOSURE
NO DIVERSION ROUTE (MAX QUEUE METHOD)**

AUGUST
Analyzed for 2009
Construction Season

GRAPHICAL REPRESENTATION OF TRAFFIC MODEL INPUT AND OUTPUT
MON-THUR NORTHBOUND DIRECTION

