

**USH 41: STH 15 TO STH 125 (OUTAGAMIE COUNTY)
NIGHTTIME 2 LANE CLOSURE
NO DIVERSION ROUTE (MAX QUEUE METHOD)**

OCTOBER

Analyzed for 2009
Construction Season

SUMMARY OF TRAFFIC MODEL OUTPUT

SATURDAY SOUTHBOUND DIRECTION

TIME OF DAY	FLOWS AND CAPACITY IN VEH/HR						AVERAGE SPEEDS IN MPH				
	MAIN ROUTE		SITE CAPA CITY	FLOW		AV.DEL PER VEH (MINS)	AVERAGE QUEUE (VEH)	MAIN ROUTE		SITE	
	DEMAND FLOW	PCT HEAVY		MAIN ROUTE	'DIVER TED'			WITHOUT WORK ZONE	WITH WORK ZONE		
MID-1 AM	317	0.0	1500	317	0	0.51	0	70.2	52.7	44.2	
1-2 AM	209	0.0	1500	209	0	0.50	0	70.2	53.0	44.6	
2-3 AM	199	0.0	1500	199	0	0.50	0	70.2	53.0	44.7	
3-4 AM	140	0.0	1500	140	0	0.49	0	70.2	53.2	44.9	
4-5 AM	185	0.0	1500	185	0	0.49	0	70.2	53.1	44.7	
5-6 AM	325	0.0	1500	325	0	0.51	0	70.2	52.7	44.2	
6-7 AM	584	0.0	1500	584	0	0.54	0	70.0	51.8	43.2	
7-8 AM	844	0.0	1500	844	0	0.57	0	69.7	50.9	42.2	
8-9 AM	1105	0.0	OFF	1105	0	0.00	0	69.4	69.4	69.4	
9-10 AM	1330	0.0	OFF	1330	0	0.00	0	69.1	69.1	69.1	
10-11 AM	1608	0.0	OFF	1608	0	0.00	0	68.7	68.7	68.7	
11AM-NOON	1798	0.0	OFF	1798	0	0.00	0	68.5	68.5	68.5	
NOON-1PM	2017	0.0	OFF	2017	0	0.00	0	68.2	68.2	68.2	
1-2 PM	2002	0.0	OFF	2002	0	0.00	0	68.2	68.2	68.2	
2-3 PM	2074	0.0	OFF	2074	0	0.00	0	68.2	68.2	68.2	
3-4 PM	2085	0.0	OFF	2085	0	0.00	0	68.1	68.1	68.1	
4-5 PM	2126	0.0	OFF	2126	0	0.00	0	68.1	68.1	68.1	
5-6 PM	1958	0.0	OFF	1958	0	0.00	0	68.3	68.3	68.3	
6-7 PM	1697	0.0	1499	1697	0	4.90	113	68.6	16.7	30.8	
7-8 PM	1488	0.0	1499	1488	0	8.80	201	68.9	10.6	30.8	
8-9 PM	1329	0.0	1499	1329	0	4.69	109	69.1	17.3	32.0	
9-10 PM	1156	0.0	1500	1156	0	0.67	0	69.3	48.4	39.6	
10-11 PM	828	0.0	1500	828	0	0.57	0	69.7	51.0	42.3	
11PM-MID	559	0.0	1500	559	0	0.54	0	70.0	51.9	43.3	

"OFF" INDICATES NO ROAD WORK (ALL LANES OPEN TO TRAFFIC)

----- SITE BREAKDOWN DELAYS -----	
BREAKDOWN DURATION (MINS)	0
RANGE OF QUEUE DELAY - MIN (VEH-H) MAX	0.0
AV BREAKDOWNS PER DAY	0.00
AV QUEUE DELAY/DAY (VEH-H)	0.0
AV TOTAL DELAY/DAY (VEH-H)	0.0

----- SITE ACCIDENT DELAYS -----	
BREAKDOWN DURATION (MINS)	0
RANGE OF QUEUE DELAY - MIN (VEH-H) MAX	0
AV BREAKDOWNS PER DAY	0
AV QUEUE DELAY/DAY (VEH-H)	0
AV TOTAL DELAY/DAY (VEH-H)	0

AVERAGE ACCIDENT NUMBERS (PIA/DAY)	
MAIN ROUTE WITHOUT WORKS	0.0080
MAIN ROUTE WITH WORKS	0.0074
'DIVERSION'	0.0000
PIA: Personal Injury Accidents	
IMPACTS ON ROAD USERS	
ROAD USER COSTS PER DAY	\$8,539
CONGESTED HOURS PER DAY*	0

*Delays Exceeding User-Specified Maximum

**USH 41: STH 15 TO STH 125 (OUTAGAMIE COUNTY)
 NIGHTTIME 2 LANE CLOSURE
 NO DIVERSION ROUTE (MAX QUEUE METHOD)**

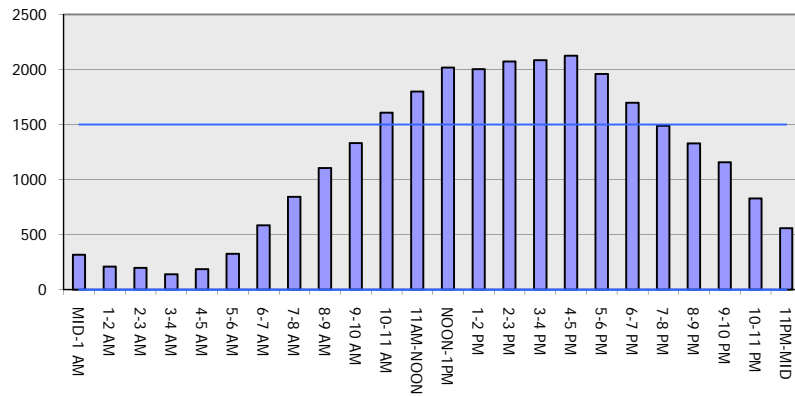
OCTOBER

Analyzed for 2009
 Construction Season

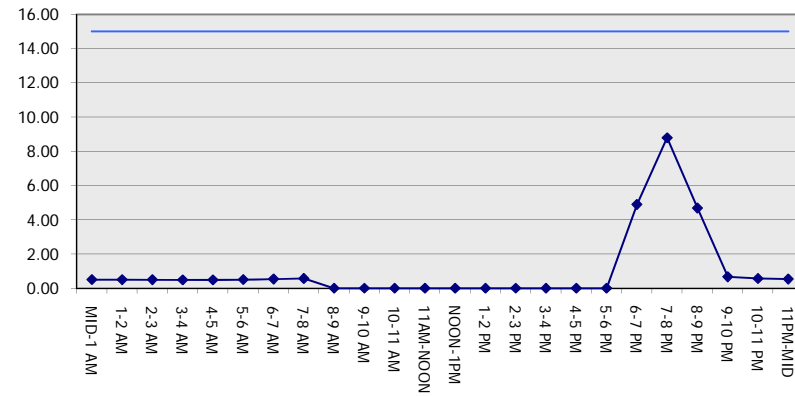
GRAPHICAL REPRESENTATION OF TRAFFIC MODEL INPUT AND OUTPUT

SATURDAY SOUTHBOUND DIRECTION

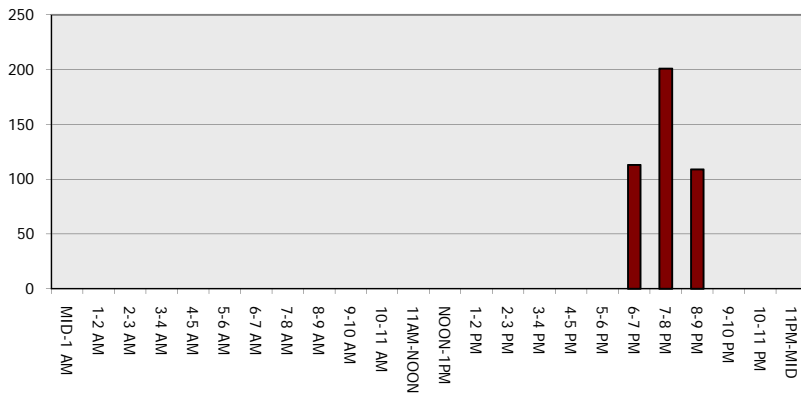
Main Route - Traffic Demand (Vehicles Per Hour)



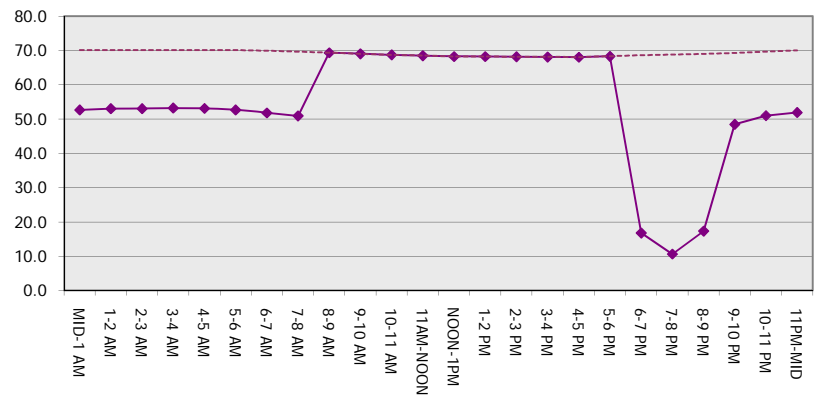
Main Route Average Delay Per Vehicle (Minutes)



Main Route - Average Queue Length (Vehicles)



Main Route - Average Speed (MPH)



USH 41: STH 15 TO STH 125 (OUTAGAMIE COUNTY) NIGHTTIME 2 LANE CLOSURE NO DIVERSION ROUTE (MAX QUEUE METHOD)	OCTOBER
	Analyzed for 2009 Construction Season

SUMMARY OF TRAFFIC MODEL OUTPUT

SATURDAY NORTHBOUND DIRECTION

TIME OF DAY	FLOWS AND CAPACITY IN VEH/HR							AVERAGE SPEEDS IN MPH		
	MAIN ROUTE		SITE CAPA CITY	FLOW		AV.DEL PER VEH (MINS)	AVERAGE QUEUE (VEH)	MAIN ROUTE		SITE
	DEMAND FLOW	PCT HEAVY		MAIN ROUTE	'DIVER TED'			WITHOUT WORK ZONE	WITH WORK ZONE	
MID-1 AM	301	0.0	1500	301	0	0.51	0	70.2	52.7	44.3
1-2 AM	172	0.0	1500	172	0	0.49	0	70.2	53.2	44.8
2-3 AM	165	0.0	1500	165	0	0.49	0	70.2	53.2	44.8
3-4 AM	130	0.0	1500	130	0	0.49	0	70.2	53.3	45.0
4-5 AM	185	0.0	1500	185	0	0.49	0	70.2	53.1	44.7
5-6 AM	282	0.0	1500	282	0	0.51	0	70.2	52.8	44.3
6-7 AM	483	0.0	1500	483	0	0.53	0	70.1	52.2	43.6
7-8 AM	915	0.0	1500	915	0	0.58	0	69.6	50.7	42.0
8-9 AM	1321	0.0	OFF	1321	0	0.00	0	69.1	69.1	69.1
9-10 AM	1647	0.0	OFF	1647	0	0.00	0	68.7	68.7	68.7
10-11 AM	2093	0.0	OFF	2093	0	0.00	0	68.1	68.1	68.1
11AM-NOON	2286	0.0	OFF	2286	0	0.00	0	67.9	67.9	67.9
NOON-1PM	2314	0.0	OFF	2314	0	0.00	0	67.9	67.9	67.9
1-2 PM	2227	0.0	OFF	2227	0	0.00	0	67.9	67.9	67.9
2-3 PM	2097	0.0	OFF	2097	0	0.00	0	68.1	68.1	68.1
3-4 PM	2018	0.0	OFF	2018	0	0.00	0	68.2	68.2	68.2
4-5 PM	1993	0.0	OFF	1993	0	0.00	0	68.2	68.2	68.2
5-6 PM	1860	0.0	OFF	1860	0	0.00	0	68.4	68.4	68.4
6-7 PM	1629	0.0	1499	1629	0	4.11	85	68.7	19.0	30.8
7-8 PM	1181	0.0	1499	1181	0	1.49	36	69.2	35.4	37.3
8-9 PM	898	0.0	1500	898	0	0.58	0	69.6	50.8	42.0
9-10 PM	735	0.0	1500	735	0	0.56	0	69.8	51.3	42.6
10-11 PM	589	0.0	1500	589	0	0.54	0	70.0	51.8	43.2
11PM-MID	446	0.0	1500	446	0	0.53	0	70.2	52.3	43.7

"OFF" INDICATES NO ROAD WORK (ALL LANES OPEN TO TRAFFIC)

----- SITE BREAKDOWN DELAYS -----	
BREAKDOWN DURATION (MINS)	0
RANGE OF QUEUE DELAY - MIN (VEH-H) MAX	0.0
AV BREAKDOWNS PER DAY	0.00
AV QUEUE DELAY/DAY (VEH-H)	0.0
AV TOTAL DELAY/DAY (VEH-H)	0.0

----- SITE ACCIDENT DELAYS -----	
BREAKDOWN DURATION (MINS)	0
RANGE OF QUEUE DELAY - MIN (VEH-H) MAX	0
AV BREAKDOWNS PER DAY	0
AV QUEUE DELAY/DAY (VEH-H)	0
AV TOTAL DELAY/DAY (VEH-H)	0

AVERAGE ACCIDENT NUMBERS (PIA/DAY)	
MAIN ROUTE WITHOUT WORKS	0.0080
MAIN ROUTE WITH WORKS	0.0075
'DIVERSION'	0.0000

PIA: Personal Injury Accidents

ECONOMIC IMPACT ON ROAD USERS	
ROAD USER COSTS PER DAY	\$3,158
CONGESTED HOURS PER DAY*	0

*Delays Exceeding User-Specified Maximum

**USH 41: STH 15 TO STH 125 (OUTAGAMIE COUNTY)
NIGHTTIME 2 LANE CLOSURE
NO DIVERSION ROUTE (MAX QUEUE METHOD)**

OCTOBER

Analyzed for 2009
Construction Season

**GRAPHICAL REPRESENTATION OF TRAFFIC MODEL INPUT AND OUTPUT
SATURDAY NORTHBOUND DIRECTION**

