

<b>USH 41: STH 15 TO STH 125 (OUTAGAMIE COUNTY)</b> <b>NIGHTTIME 2 LANE CLOSURE</b> <b>NO DIVERSION ROUTE (MAX QUEUE METHOD)</b>	<b>OCTOBER</b>
	Analyzed for 2009 Construction Season

**SUMMARY OF TRAFFIC MODEL OUTPUT**

MON-THUR                  SOUTHBOUND DIRECTION

TIME OF DAY	FLOWS AND CAPACITY IN VEH/HR						AVERAGE SPEEDS IN MPH				
	MAIN ROUTE		SITE CAPA CITY	FLOW		AV.DEL PER VEH (MINS)	AVERAGE QUEUE (VEH)	MAIN ROUTE		SITE	
	DEMAND FLOW	PCT HEAVY		MAIN ROUTE	'DIVER TED'			WITHOUT WORK ZONE	WITH WORK ZONE		
MID-1 AM	316	0.0	1500	316	0	0.51	0	70.2	52.7	44.2	
1-2 AM	175	0.0	1500	175	0	0.49	0	70.2	53.2	44.8	
2-3 AM	129	0.0	1500	129	0	0.49	0	70.2	53.3	45.0	
3-4 AM	159	0.0	1500	159	0	0.49	0	70.2	53.2	44.8	
4-5 AM	331	0.0	1500	331	0	0.51	0	70.2	52.7	44.2	
5-6 AM	975	0.0	OFF	975	0	0.00	0	69.6	69.6	69.6	
6-7 AM	1802	0.0	OFF	1802	0	0.00	0	68.5	68.5	68.5	
7-8 AM	2798	0.0	OFF	2798	0	0.00	0	67.3	67.3	67.3	
8-9 AM	2031	0.0	OFF	2031	0	0.00	0	68.2	68.2	68.2	
9-10 AM	1600	0.0	OFF	1600	0	0.00	0	68.7	68.7	68.7	
10-11 AM	1665	0.0	OFF	1665	0	0.00	0	68.7	68.7	68.7	
11AM-NOON	1883	0.0	OFF	1883	0	0.00	0	68.4	68.4	68.4	
NOON-1PM	2057	0.0	OFF	2057	0	0.00	0	68.2	68.2	68.2	
1-2 PM	2243	0.0	OFF	2243	0	0.00	0	67.9	67.9	67.9	
2-3 PM	2481	0.0	OFF	2481	0	0.00	0	67.6	67.6	67.6	
3-4 PM	2610	0.0	OFF	2610	0	0.00	0	67.5	67.5	67.5	
4-5 PM	3071	0.0	OFF	3071	0	0.00	0	66.9	66.9	66.9	
5-6 PM	2813	0.0	OFF	2813	0	0.00	0	67.3	67.3	67.3	
6-7 PM	1850	0.0	OFF	1850	0	0.00	0	68.4	68.4	68.4	
7-8 PM	1420	0.0	1500	1420	0	0.99	0	69.0	42.2	32.5	
8-9 PM	1290	0.0	1500	1290	0	0.82	0	69.1	45.3	35.8	
9-10 PM	1053	0.0	1500	1053	0	0.59	0	69.4	50.3	41.5	
10-11 PM	645	0.0	1500	645	0	0.55	0	69.9	51.6	43.0	
11PM-MID	359	0.0	1500	359	0	0.52	0	70.2	52.5	44.0	

"OFF" INDICATES NO ROAD WORK (ALL LANES OPEN TO TRAFFIC)

*----- SITE BREAKDOWN DELAYS -----*	
BREAKDOWN DURATION (MINS)	0
RANGE OF QUEUE DELAY - MIN (VEH-H) MAX	0.0
AV BREAKDOWNS PER DAY	0.00
AV QUEUE DELAY/DAY (VEH-H)	0.0
AV TOTAL DELAY/DAY (VEH-H)	0.0

*----- SITE ACCIDENT DELAYS -----*	
BREAKDOWN DURATION (MINS)	0
RANGE OF QUEUE DELAY - MIN (VEH-H) MAX	0
AV BREAKDOWNS PER DAY	0
AV QUEUE DELAY/DAY (VEH-H)	0
AV TOTAL DELAY/DAY (VEH-H)	0

AVERAGE ACCIDENT NUMBERS (PIA/DAY)	
MAIN ROUTE WITHOUT WORKS	0.0103
MAIN ROUTE WITH WORKS	0.0099
'DIVERSION'	0.0000
<small>PIA: Personal Injury Accidents</small>	
IMPACTS ON ROAD USERS	
ROAD USER COSTS PER DAY	\$878
CONGESTED HOURS PER DAY*	0

\*Delays Exceeding User-Specified Maximum

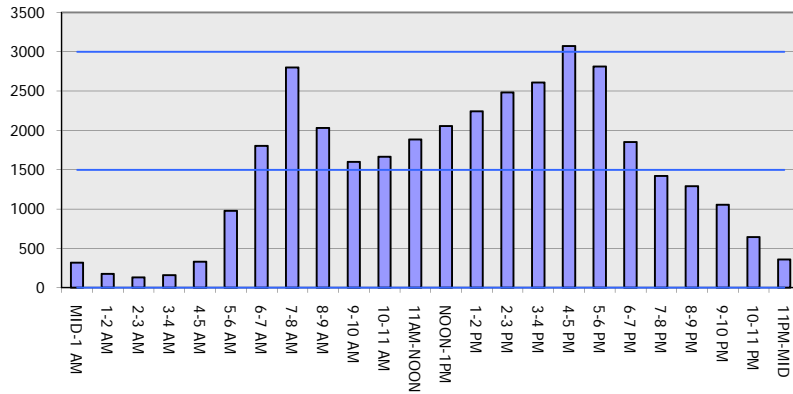
**USH 41: STH 15 TO STH 125 (OUTAGAMIE COUNTY)  
NIGHTTIME 2 LANE CLOSURE  
NO DIVERSION ROUTE (MAX QUEUE METHOD)**

**OCTOBER**

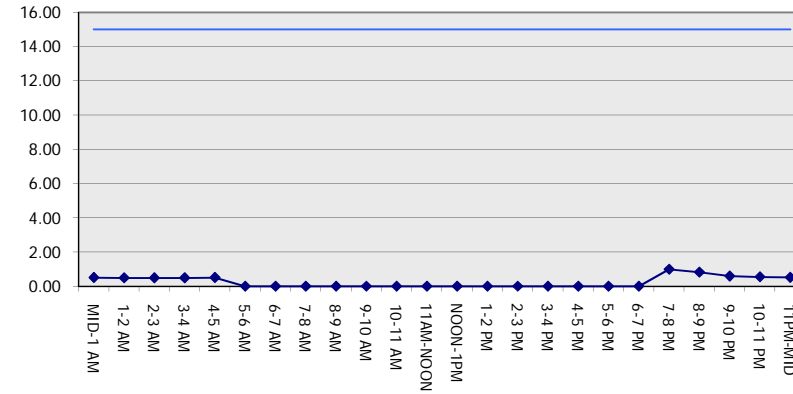
Analyzed for 2009  
Construction Season

**GRAPHICAL REPRESENTATION OF TRAFFIC MODEL INPUT AND OUTPUT**  
**MON-THUR SOUTHBOUND DIRECTION**

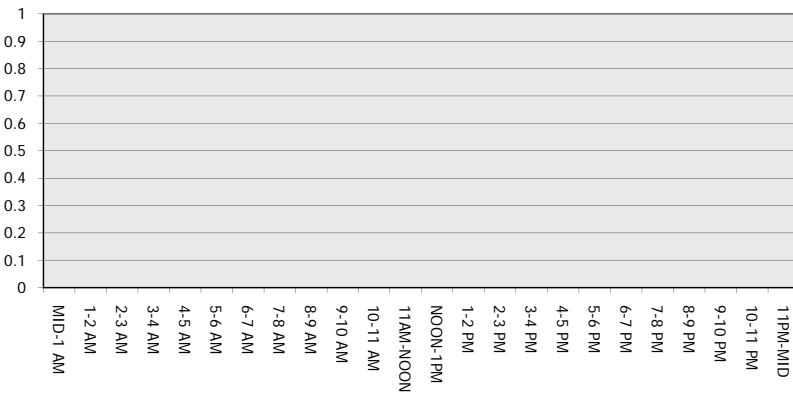
**Main Route - Traffic Demand (Vehicles Per Hour)**



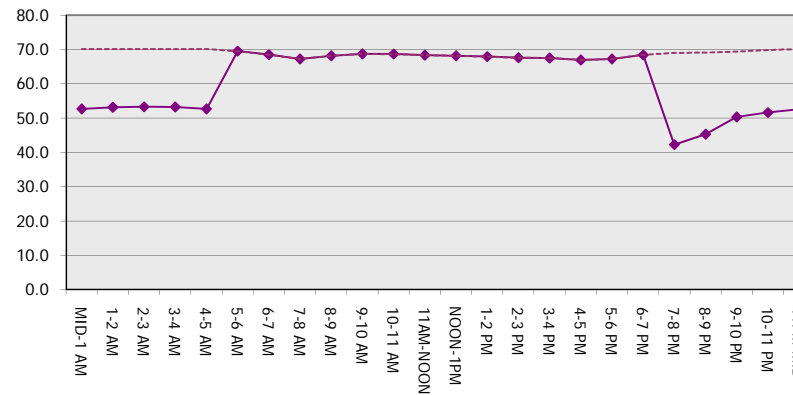
**Main Route Average Delay Per Vehicle (Minutes)**



**Main Route - Average Queue Length (Vehicles)**



**Main Route - Average Speed (MPH)**



<b>USH 41: STH 15 TO STH 125 (OUTAGAMIE COUNTY)                  NIGHTTIME 2 LANE CLOSURE                  NO DIVERSION ROUTE (MAX QUEUE METHOD)</b>	<b>OCTOBER</b>
	Analyzed for 2009 Construction Season

**SUMMARY OF TRAFFIC MODEL OUTPUT**

MON-THUR                      NORTHBOUND DIRECTION

TIME OF DAY	FLOWS AND CAPACITY IN VEH/HR						AVERAGE SPEEDS IN MPH			
	MAIN ROUTE		SITE CAPA CITY	FLOW		AV.DEL PER VEH (MINS)	AVERAGE QUEUE (VEH)	MAIN ROUTE		SITE
	DEMAND FLOW	PCT HEAVY		MAIN ROUTE	'DIVER TED'			WITHOUT WORK ZONE	WITH WORK ZONE	
MID-1 AM	163	0.0	1500	163	0	0.49	0	70.2	53.2	44.8
1-2 AM	128	0.0	1500	128	0	0.49	0	70.2	53.3	45.0
2-3 AM	110	0.0	1500	110	0	0.49	0	70.2	53.3	45.0
3-4 AM	138	0.0	1500	138	0	0.49	0	70.2	53.3	45.0
4-5 AM	295	0.0	1500	295	0	0.51	0	70.2	52.7	44.3
5-6 AM	859	0.0	OFF	859	0	0.00	0	69.7	69.7	69.7
6-7 AM	1644	0.0	OFF	1644	0	0.00	0	68.7	68.7	68.7
7-8 AM	2749	0.0	OFF	2749	0	0.00	0	67.3	67.3	67.3
8-9 AM	2171	0.0	OFF	2171	0	0.00	0	68.1	68.1	68.1
9-10 AM	1810	0.0	OFF	1810	0	0.00	0	68.5	68.5	68.5
10-11 AM	1833	0.0	OFF	1833	0	0.00	0	68.4	68.4	68.4
11AM-NOON	2023	0.0	OFF	2023	0	0.00	0	68.2	68.2	68.2
NOON-1PM	2037	0.0	OFF	2037	0	0.00	0	68.2	68.2	68.2
1-2 PM	2019	0.0	OFF	2019	0	0.00	0	68.2	68.2	68.2
2-3 PM	2193	0.0	OFF	2193	0	0.00	0	68.0	68.0	68.0
3-4 PM	2724	0.0	OFF	2724	0	0.00	0	67.4	67.4	67.4
4-5 PM	3202	0.0	OFF	3202	0	0.00	0	66.8	66.8	66.8
5-6 PM	2879	0.0	OFF	2879	0	0.00	0	67.1	67.1	67.1
6-7 PM	1822	0.0	OFF	1822	0	0.00	0	68.5	68.5	68.5
7-8 PM	1076	0.0	1500	1076	0	0.59	0	69.4	50.2	41.4
8-9 PM	820	0.0	1500	820	0	0.57	0	69.7	51.0	42.3
9-10 PM	651	0.0	1500	651	0	0.55	0	69.9	51.6	42.9
10-11 PM	509	0.0	1500	509	0	0.53	0	70.1	52.0	43.5
11PM-MID	316	0.0	1500	316	0	0.51	0	70.2	52.7	44.2

"OFF" INDICATES NO ROAD WORK (ALL LANES OPEN TO TRAFFIC)

*----- SITE BREAKDOWN DELAYS -----*	
BREAKDOWN DURATION (MINS)	0
RANGE OF QUEUE DELAY - MIN (VEH-H) MAX	0.0
AV BREAKDOWNS PER DAY	0.00
AV QUEUE DELAY/DAY (VEH-H)	0.0
AV TOTAL DELAY/DAY (VEH-H)	0.0

*----- SITE ACCIDENT DELAYS -----*	
BREAKDOWN DURATION (MINS)	0
RANGE OF QUEUE DELAY - MIN (VEH-H) MAX	0
AV BREAKDOWNS PER DAY	0
AV QUEUE DELAY/DAY (VEH-H)	0
AV TOTAL DELAY/DAY (VEH-H)	0

AVERAGE ACCIDENT NUMBERS (PIA/DAY)	
MAIN ROUTE WITHOUT WORKS	0.0098
MAIN ROUTE WITH WORKS	0.0095
'DIVERSION'	0.0000

PIA: Personal Injury Accidents

ECONOMIC IMPACT ON ROAD USERS	
ROAD USER COSTS PER DAY	\$484
CONGESTED HOURS PER DAY*	0

\*Delays Exceeding User-Specified Maximum

**USH 41: STH 15 TO STH 125 (OUTAGAMIE COUNTY)  
NIGHTTIME 2 LANE CLOSURE  
NO DIVERSION ROUTE (MAX QUEUE METHOD)**

**OCTOBER**

Analyzed for 2009  
Construction Season

**GRAPHICAL REPRESENTATION OF TRAFFIC MODEL INPUT AND OUTPUT  
MON-THUR NORTHBOUND DIRECTION**

