

USH 41: STH 15 TO STH 125 (OUTAGAMIE COUNTY) NIGHTTIME 2 LANE CLOSURE NO DIVERSION ROUTE (MAX QUEUE METHOD)	OCTOBER
	Analyzed for 2009 Construction Season

SUMMARY OF TRAFFIC MODEL OUTPUT

FRIDAY SOUTHBOUND DIRECTION

TIME OF DAY	FLOWS AND CAPACITY IN VEH/HR						AVERAGE SPEEDS IN MPH				
	MAIN ROUTE		SITE CAPA CITY	FLOW		AV.DEL PER VEH (MINS)	AVERAGE QUEUE (VEH)	MAIN ROUTE		SITE	
	DEMAND FLOW	PCT HEAVY		MAIN ROUTE	'DIVER TED'			WITHOUT WORK ZONE	WITH WORK ZONE		
MID-1 AM	261	0.0	1500	261	0	0.50	0	70.2	52.8	44.5	
1-2 AM	166	0.0	1500	166	0	0.49	0	70.2	53.2	44.8	
2-3 AM	170	0.0	1500	170	0	0.49	0	70.2	53.2	44.8	
3-4 AM	150	0.0	1500	150	0	0.49	0	70.2	53.2	44.9	
4-5 AM	325	0.0	1500	325	0	0.51	0	70.2	52.7	44.2	
5-6 AM	871	0.0	OFF	871	0	0.00	0	69.7	69.7	69.7	
6-7 AM	1659	0.0	OFF	1659	0	0.00	0	68.7	68.7	68.7	
7-8 AM	2521	0.0	OFF	2521	0	0.00	0	67.6	67.6	67.6	
8-9 AM	1927	0.0	OFF	1927	0	0.00	0	68.3	68.3	68.3	
9-10 AM	1648	0.0	OFF	1648	0	0.00	0	68.7	68.7	68.7	
10-11 AM	1866	0.0	OFF	1866	0	0.00	0	68.4	68.4	68.4	
11AM-NOON	2174	0.0	OFF	2174	0	0.00	0	68.1	68.1	68.1	
NOON-1PM	2434	0.0	OFF	2434	0	0.00	0	67.7	67.7	67.7	
1-2 PM	2792	0.0	OFF	2792	0	0.00	0	67.3	67.3	67.3	
2-3 PM	2782	0.0	OFF	2782	0	0.00	0	67.3	67.3	67.3	
3-4 PM	2985	0.0	OFF	2985	0	0.00	0	67.0	67.0	67.0	
4-5 PM	3290	0.0	OFF	3290	0	0.00	0	66.6	66.6	66.6	
5-6 PM	2947	0.0	OFF	2947	0	0.00	0	67.1	67.1	67.1	
6-7 PM	2113	0.0	OFF	2113	0	0.00	0	68.1	68.1	68.1	
7-8 PM	1585	0.0	1499	1585	0	3.38	63	68.7	21.9	30.8	
8-9 PM	1461	0.0	1499	1461	0	3.91	74	68.9	19.7	30.8	
9-10 PM	1310	0.0	1500	1310	0	1.13	9	69.1	40.1	34.9	
10-11 PM	845	0.0	1500	845	0	0.57	0	69.7	50.9	42.2	
11PM-MID	545	0.0	1500	545	0	0.54	0	70.0	51.9	43.3	

"OFF" INDICATES NO ROAD WORK (ALL LANES OPEN TO TRAFFIC)

----- SITE BREAKDOWN DELAYS -----	
BREAKDOWN DURATION (MINS)	0
RANGE OF QUEUE DELAY - MIN (VEH-H) MAX	0.0
AV BREAKDOWNS PER DAY	0.00
AV QUEUE DELAY/DAY (VEH-H)	0.0
AV TOTAL DELAY/DAY (VEH-H)	0.0

----- SITE ACCIDENT DELAYS -----	
BREAKDOWN DURATION (MINS)	0
RANGE OF QUEUE DELAY - MIN (VEH-H) MAX	0
AV BREAKDOWNS PER DAY	0
AV QUEUE DELAY/DAY (VEH-H)	0
AV TOTAL DELAY/DAY (VEH-H)	0

AVERAGE ACCIDENT NUMBERS (PIA/DAY)	
MAIN ROUTE WITHOUT WORKS	0.0111
MAIN ROUTE WITH WORKS	0.0107
'DIVERSION'	0.0000
PIA: Personal Injury Accidents	
IMPACTS ON ROAD USERS	
ROAD USER COSTS PER DAY	\$3,237
CONGESTED HOURS PER DAY*	0

*Delays Exceeding User-Specified Maximum

**USH 41: STH 15 TO STH 125 (OUTAGAMIE COUNTY)
NIGHTTIME 2 LANE CLOSURE
NO DIVERSION ROUTE (MAX QUEUE METHOD)**

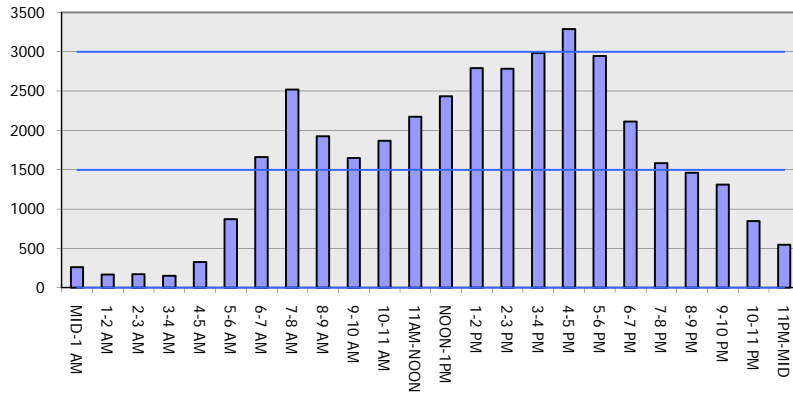
OCTOBER

Analyzed for 2009
Construction Season

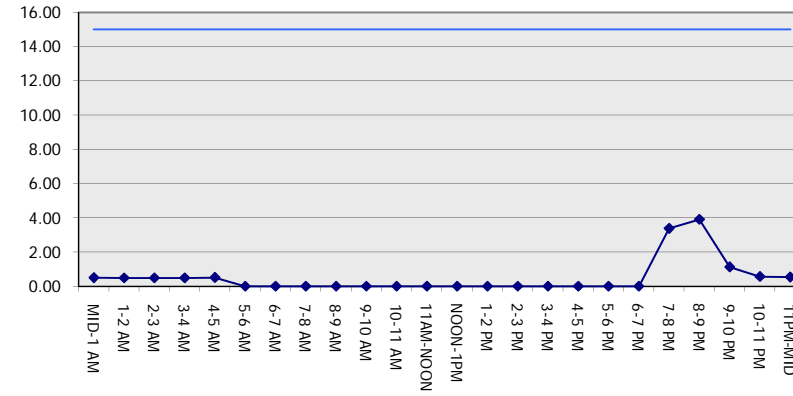
GRAPHICAL REPRESENTATION OF TRAFFIC MODEL INPUT AND OUTPUT

FRIDAY SOUTHBOUND DIRECTION

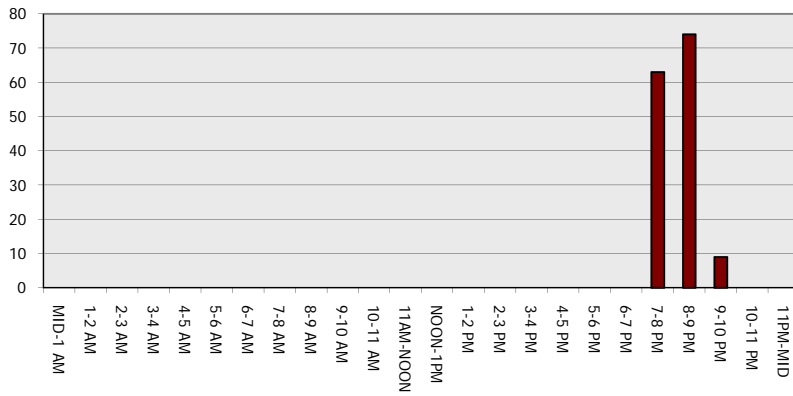
Main Route - Traffic Demand (Vehicles Per Hour)



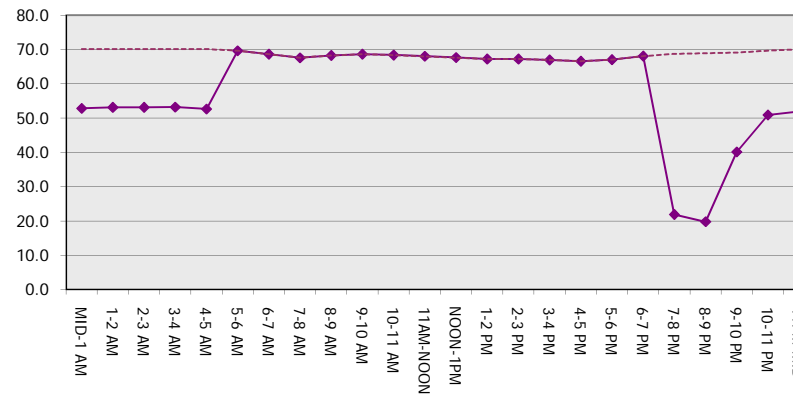
Main Route Average Delay Per Vehicle (Minutes)



Main Route - Average Queue Length (Vehicles)



Main Route - Average Speed (MPH)



USH 41: STH 15 TO STH 125 (OUTAGAMIE COUNTY) NIGHTTIME 2 LANE CLOSURE NO DIVERSION ROUTE (MAX QUEUE METHOD)	OCTOBER
	Analyzed for 2009 Construction Season

SUMMARY OF TRAFFIC MODEL OUTPUT

FRIDAY NORTHBOUND DIRECTION

TIME OF DAY	FLOWS AND CAPACITY IN VEH/HR						AVERAGE SPEEDS IN MPH			
	MAIN ROUTE		SITE CAPA CITY	FLOW		AV.DEL PER VEH (MINS)	AVERAGE QUEUE (VEH)	MAIN ROUTE		SITE
	DEMAND FLOW	PCT HEAVY		MAIN ROUTE	'DIVER TED'			WITHOUT WORK ZONE	WITH WORK ZONE	
MID-1 AM	207	0.0	1500	207	0	0.50	0	70.2	53.0	44.6
1-2 AM	168	0.0	1500	168	0	0.49	0	70.2	53.2	44.8
2-3 AM	160	0.0	1500	160	0	0.49	0	70.2	53.2	44.8
3-4 AM	173	0.0	1500	173	0	0.49	0	70.2	53.2	44.8
4-5 AM	366	0.0	1500	366	0	0.52	0	70.2	52.5	44.0
5-6 AM	720	0.0	OFF	720	0	0.00	0	69.9	69.9	69.9
6-7 AM	1513	0.0	OFF	1513	0	0.00	0	68.9	68.9	68.9
7-8 AM	2624	0.0	OFF	2624	0	0.00	0	67.5	67.5	67.5
8-9 AM	2152	0.0	OFF	2152	0	0.00	0	68.1	68.1	68.1
9-10 AM	1955	0.0	OFF	1955	0	0.00	0	68.3	68.3	68.3
10-11 AM	2172	0.0	OFF	2172	0	0.00	0	68.1	68.1	68.1
11AM-NOON	2460	0.0	OFF	2460	0	0.00	0	67.7	67.7	67.7
NOON-1PM	2487	0.0	OFF	2487	0	0.00	0	67.6	67.6	67.6
1-2 PM	2541	0.0	OFF	2541	0	0.00	0	67.6	67.6	67.6
2-3 PM	2757	0.0	OFF	2757	0	0.00	0	67.3	67.3	67.3
3-4 PM	3150	0.0	OFF	3150	0	0.00	0	66.8	66.8	66.8
4-5 PM	3465	0.0	OFF	3465	0	0.00	0	66.4	66.4	66.4
5-6 PM	3125	0.0	OFF	3125	0	0.00	0	66.8	66.8	66.8
6-7 PM	2481	0.0	OFF	2481	0	0.00	0	67.6	67.6	67.6
7-8 PM	1561	0.0	1499	1561	0	3.87	74	68.8	19.9	30.9
8-9 PM	1068	0.0	1500	1068	0	0.75	5	69.4	46.8	40.6
9-10 PM	896	0.0	1500	896	0	0.58	0	69.6	50.8	42.0
10-11 PM	700	0.0	1500	700	0	0.55	0	69.9	51.4	42.8
11PM-MID	477	0.0	1500	477	0	0.53	0	70.1	52.2	43.6

"OFF" INDICATES NO ROAD WORK (ALL LANES OPEN TO TRAFFIC)

----- SITE BREAKDOWN DELAYS -----	
BREAKDOWN DURATION (MINS)	0
RANGE OF QUEUE DELAY - MIN (VEH-H) MAX	0.0
AV BREAKDOWNS PER DAY	0.00
AV QUEUE DELAY/DAY (VEH-H)	0.0
AV TOTAL DELAY/DAY (VEH-H)	0.0

----- SITE ACCIDENT DELAYS -----	
BREAKDOWN DURATION (MINS)	0
RANGE OF QUEUE DELAY - MIN (VEH-H) MAX	0
AV BREAKDOWNS PER DAY	0
AV QUEUE DELAY/DAY (VEH-H)	0
AV TOTAL DELAY/DAY (VEH-H)	0

AVERAGE ACCIDENT NUMBERS (PIA/DAY)	
MAIN ROUTE WITHOUT WORKS	0.0113
MAIN ROUTE WITH WORKS	0.0109
'DIVERSION'	0.0000

PIA: Personal Injury Accidents

ECONOMIC IMPACT ON ROAD USERS	
ROAD USER COSTS PER DAY	\$1,994
CONGESTED HOURS PER DAY*	0

*Delays Exceeding User-Specified Maximum

**USH 41: STH 15 TO STH 125 (OUTAGAMIE COUNTY)
NIGHTTIME 2 LANE CLOSURE
NO DIVERSION ROUTE (MAX QUEUE METHOD)**

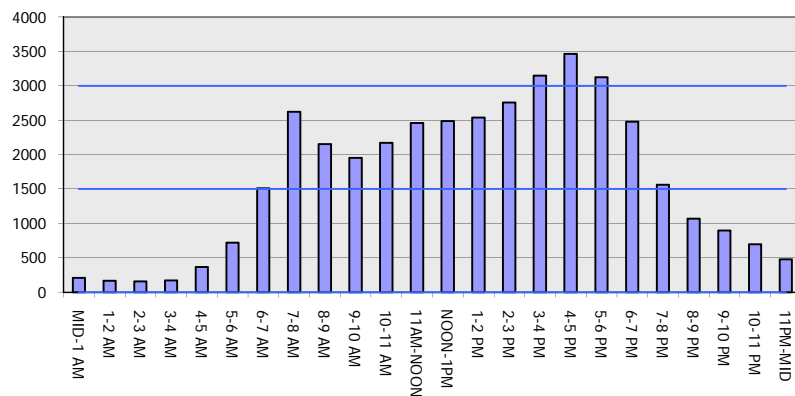
OCTOBER

Analyzed for 2009
Construction Season

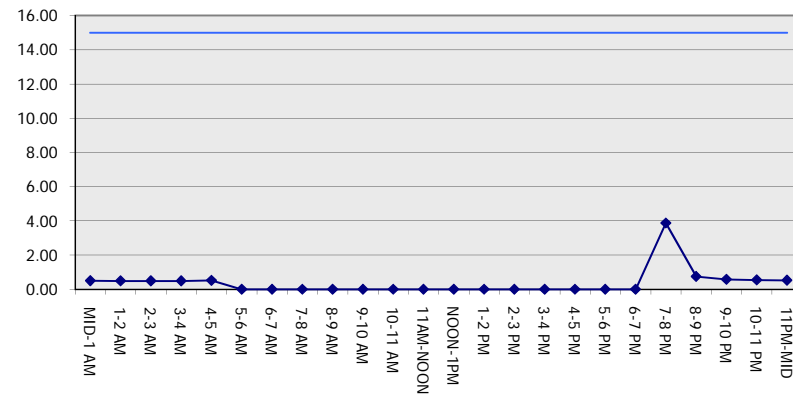
GRAPHICAL REPRESENTATION OF TRAFFIC MODEL INPUT AND OUTPUT

FRIDAY NORTHBOUND DIRECTION

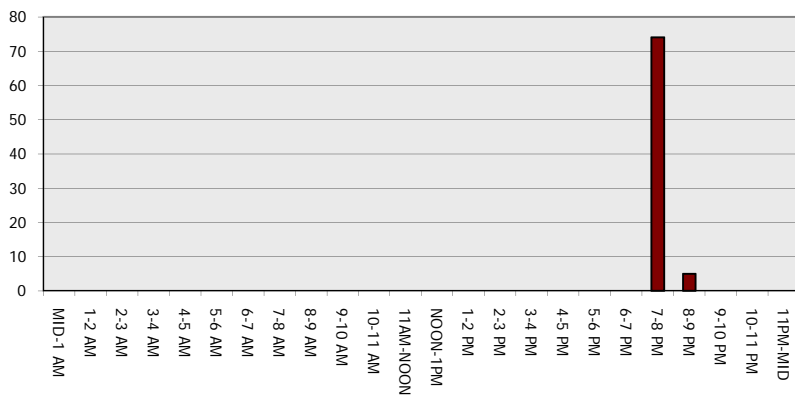
Main Route - Traffic Demand (Vehicles Per Hour)



Main Route Average Delay Per Vehicle (Minutes)



Main Route - Average Queue Length (Vehicles)



Main Route - Average Speed (MPH)

