

USH 41: STH 15 TO STH 125 (OUTAGAMIE COUNTY) NIGHTTIME 2 LANE CLOSURE NO DIVERSION ROUTE (MAX QUEUE METHOD)	AUGUST
	Analyzed for 2009 Construction Season

SUMMARY OF TRAFFIC MODEL OUTPUT

SUNDAY SOUTHBOUND DIRECTION

TIME OF DAY	FLOWS AND CAPACITY IN VEH/HR						AVERAGE SPEEDS IN MPH				
	MAIN ROUTE		SITE CAPA CITY	FLOW		AV.DEL PER VEH (MINS)	AVERAGE QUEUE (VEH)	MAIN ROUTE		SITE	
	DEMAND FLOW	PCT HEAVY		MAIN ROUTE	'DIVER TED'			WITHOUT WORK ZONE	WITH WORK ZONE		
MID-1 AM	654	0.0	1500	654	0	0.55	0	69.9	51.6	42.9	
1-2 AM	261	0.0	1500	261	0	0.50	0	70.2	52.8	44.5	
2-3 AM	226	0.0	1500	226	0	0.50	0	70.2	53.0	44.6	
3-4 AM	133	0.0	1500	133	0	0.49	0	70.2	53.3	45.0	
4-5 AM	132	0.0	1500	132	0	0.49	0	70.2	53.3	45.0	
5-6 AM	195	0.0	1500	195	0	0.50	0	70.2	53.1	44.7	
6-7 AM	314	0.0	1500	314	0	0.51	0	70.2	52.7	44.2	
7-8 AM	444	0.0	1500	444	0	0.53	0	70.2	52.3	43.7	
8-9 AM	792	0.0	1500	792	0	0.56	0	69.7	51.1	42.4	
9-10 AM	1175	0.0	OFF	1175	0	0.00	0	69.3	69.3	69.3	
10-11 AM	1657	0.0	OFF	1657	0	0.00	0	68.7	68.7	68.7	
11AM-NOON	2037	0.0	OFF	2037	0	0.00	0	68.2	68.2	68.2	
NOON-1PM	2260	0.0	OFF	2260	0	0.00	0	67.9	67.9	67.9	
1-2 PM	2310	0.0	OFF	2310	0	0.00	0	67.9	67.9	67.9	
2-3 PM	2389	0.0	OFF	2389	0	0.00	0	67.8	67.8	67.8	
3-4 PM	2500	0.0	OFF	2500	0	0.00	0	67.6	67.6	67.6	
4-5 PM	2332	0.0	OFF	2332	0	0.00	0	67.8	67.8	67.8	
5-6 PM	2124	0.0	OFF	2124	0	0.00	0	68.1	68.1	68.1	
6-7 PM	1733	0.0	OFF	1733	0	0.00	0	68.6	68.6	68.6	
7-8 PM	1389	0.0	1500	1389	0	0.95	0	69.0	42.9	33.2	
8-9 PM	998	0.0	1500	998	0	0.59	0	69.5	50.4	41.7	
9-10 PM	746	0.0	1500	746	0	0.56	0	69.8	51.3	42.6	
10-11 PM	486	0.0	1500	486	0	0.53	0	70.1	52.2	43.5	
11PM-MID	303	0.0	1500	303	0	0.51	0	70.2	52.7	44.3	

"OFF" INDICATES NO ROAD WORK (ALL LANES OPEN TO TRAFFIC)

----- SITE BREAKDOWN DELAYS -----	
BREAKDOWN DURATION (MINS)	0
RANGE OF QUEUE DELAY - MIN (VEH-H) MAX	0.0
AV BREAKDOWNS PER DAY	0.00
AV QUEUE DELAY/DAY (VEH-H)	0.0
AV TOTAL DELAY/DAY (VEH-H)	0.0

----- SITE ACCIDENT DELAYS -----	
BREAKDOWN DURATION (MINS)	0
RANGE OF QUEUE DELAY - MIN (VEH-H) MAX	0
AV BREAKDOWNS PER DAY	0
AV QUEUE DELAY/DAY (VEH-H)	0
AV TOTAL DELAY/DAY (VEH-H)	0

AVERAGE ACCIDENT NUMBERS (PIA/DAY)	
MAIN ROUTE WITHOUT WORKS	0.0079
MAIN ROUTE WITH WORKS	0.0074
'DIVERSION'	0.0000
PIA: Personal Injury Accidents	
IMPACTS ON ROAD USERS	
ROAD USER COSTS PER DAY	\$1,045
CONGESTED HOURS PER DAY*	0

*Delays Exceeding User-Specified Maximum

**USH 41: STH 15 TO STH 125 (OUTAGAMIE COUNTY)
NIGHTTIME 2 LANE CLOSURE
NO DIVERSION ROUTE (MAX QUEUE METHOD)**

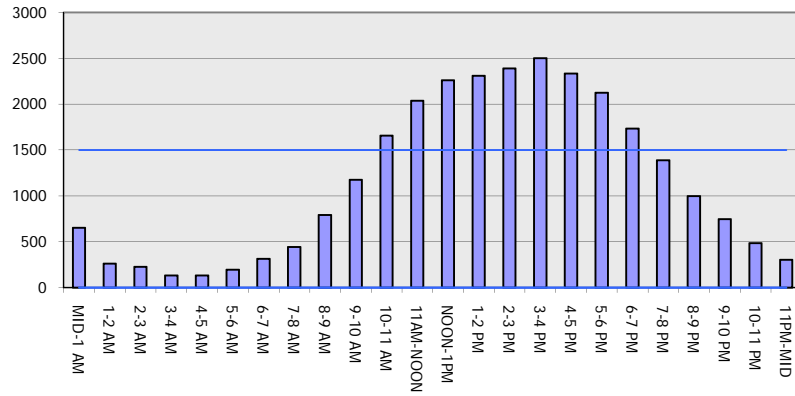
AUGUST

Analyzed for 2009
Construction Season

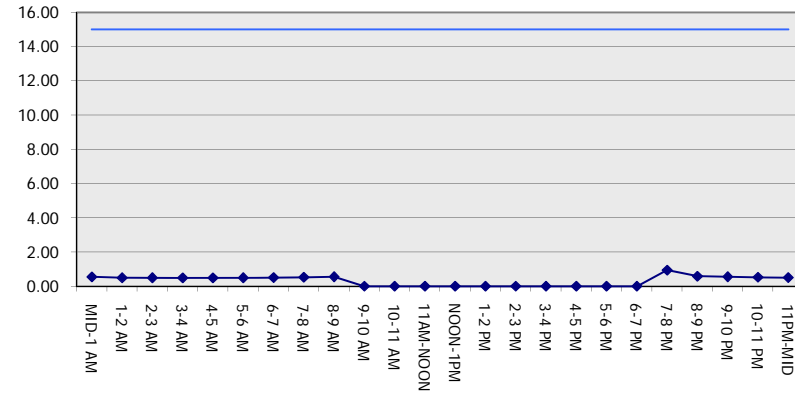
GRAPHICAL REPRESENTATION OF TRAFFIC MODEL INPUT AND OUTPUT

SUNDAY SOUTHBOUND DIRECTION

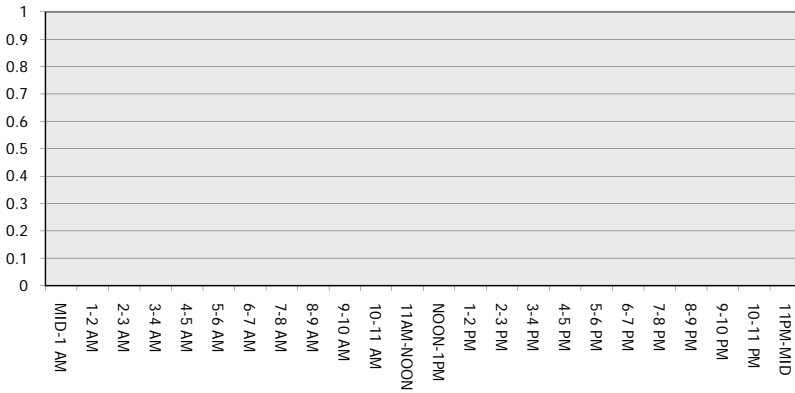
Main Route - Traffic Demand (Vehicles Per Hour)



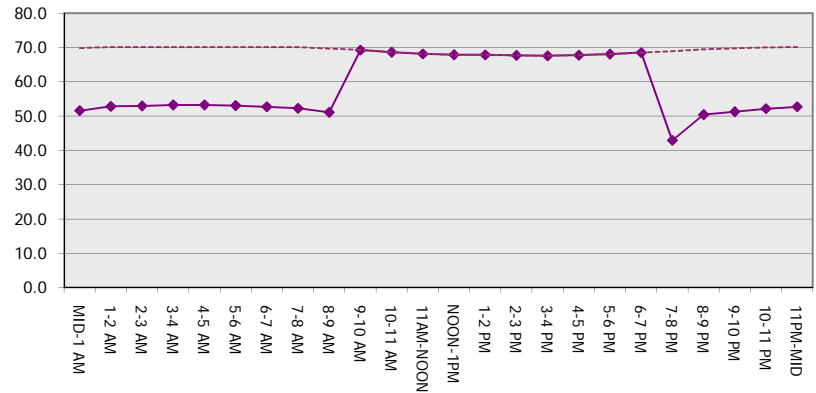
Main Route Average Delay Per Vehicle (Minutes)



Main Route - Average Queue Length (Vehicles)



Main Route - Average Speed (MPH)



USH 41: STH 15 TO STH 125 (OUTAGAMIE COUNTY) NIGHTTIME 2 LANE CLOSURE NO DIVERSION ROUTE (MAX QUEUE METHOD)	AUGUST
	Analyzed for 2009 Construction Season

SUMMARY OF TRAFFIC MODEL OUTPUT

SUNDAY NORTHBOUND DIRECTION

TIME OF DAY	FLOWS AND CAPACITY IN VEH/HR						AVERAGE SPEEDS IN MPH			
	MAIN ROUTE		SITE CAPA CITY	FLOW		AV.DEL PER VEH (MINS)	AVERAGE QUEUE (VEH)	MAIN ROUTE		SITE
	DEMAND FLOW	PCT HEAVY		MAIN ROUTE	'DIVER TED'			WITHOUT WORK ZONE	WITH WORK ZONE	
MID-1 AM	270	0.0	1500	270	0	0.51	0	70.2	52.8	44.4
1-2 AM	171	0.0	1500	171	0	0.49	0	70.2	53.2	44.8
2-3 AM	146	0.0	1500	146	0	0.49	0	70.2	53.2	44.9
3-4 AM	89	0.0	1500	89	0	0.48	0	70.2	53.4	45.1
4-5 AM	89	0.0	1500	89	0	0.48	0	70.2	53.2	44.8
5-6 AM	174	0.0	1500	174	0	0.49	0	70.2	52.9	44.5
6-7 AM	248	0.0	1500	248	0	0.50	0	70.2	52.5	44.0
7-8 AM	363	0.0	1500	363	0	0.52	0	70.0	51.9	43.3
8-9 AM	545	0.0	1500	545	0	0.54	0	69.5	69.5	69.5
9-10 AM	987	0.0	OFF	987	0	0.00	0	68.9	68.9	68.9
10-11 AM	1520	0.0	OFF	1520	0	0.00	0	68.4	68.4	68.4
11AM-NOON	1854	0.0	OFF	1854	0	0.00	0	68.2	68.2	68.2
NOON-1PM	2003	0.0	OFF	2003	0	0.00	0	68.4	68.4	68.4
1-2 PM	1918	0.0	OFF	1918	0	0.00	0	68.6	68.6	68.6
2-3 PM	1859	0.0	OFF	1859	0	0.00	0	68.6	68.6	68.6
3-4 PM	1752	0.0	OFF	1752	0	0.00	0	68.9	68.9	68.9
4-5 PM	1682	0.0	OFF	1682	0	0.00	0	69.1	69.1	69.1
5-6 PM	1496	0.0	OFF	1496	0	0.00	0	69.5	50.5	41.7
6-7 PM	1296	0.0	OFF	1296	0	0.00	0	69.6	50.9	42.1
7-8 PM	995	0.0	1500	995	0	0.59	0	69.9	51.5	42.8
8-9 PM	879	0.0	1500	879	0	0.57	0	70.2	52.2	43.7
9-10 PM	673	0.0	1500	673	0	0.55	0	70.2	52.8	44.4
10-11 PM	457	0.0	1500	457	0	0.53	0			
11PM-MID	270	0.0	1500	270	0	0.51	0			

"OFF" INDICATES NO ROAD WORK (ALL LANES OPEN TO TRAFFIC)

----- SITE BREAKDOWN DELAYS -----	
BREAKDOWN DURATION (MINS)	0
RANGE OF QUEUE DELAY - MIN (VEH-H) MAX	0.0
AV BREAKDOWNS PER DAY	0.00
AV QUEUE DELAY/DAY (VEH-H)	0.0
AV TOTAL DELAY/DAY (VEH-H)	0.0

----- SITE ACCIDENT DELAYS -----	
BREAKDOWN DURATION (MINS)	0
RANGE OF QUEUE DELAY - MIN (VEH-H) MAX	0
AV BREAKDOWNS PER DAY	0
AV QUEUE DELAY/DAY (VEH-H)	0
AV TOTAL DELAY/DAY (VEH-H)	0

AVERAGE ACCIDENT NUMBERS (PIA/DAY)	
MAIN ROUTE WITHOUT WORKS	0.0062
MAIN ROUTE WITH WORKS	0.0059
'DIVERSION'	0.0000

PIA: Personal Injury Accidents

ECONOMIC IMPACT ON ROAD USERS	
ROAD USER COSTS PER DAY	\$690
CONGESTED HOURS PER DAY*	0

*Delays Exceeding User-Specified Maximum

**USH 41: STH 15 TO STH 125 (OUTAGAMIE COUNTY)
 NIGHTTIME 2 LANE CLOSURE
 NO DIVERSION ROUTE (MAX QUEUE METHOD)**

AUGUST
 Analyzed for 2009
 Construction Season

GRAPHICAL REPRESENTATION OF TRAFFIC MODEL INPUT AND OUTPUT
SUNDAY NORTHBOUND DIRECTION

