

**USH 41: STH 441 TO STH 55 (OUTAGMIE AND BROWN COUNTIES)  
NIGHTTIME CLOSURE  
NO DIVERSION ROUTE (MAX QUEUE METHOD)**

**OCTOBER**  
Analyzed for 2009  
Construction Season

**SUMMARY OF TRAFFIC MODEL OUTPUT**  
SUNDAY SOUTHBOUND DIRECTION

TIME OF DAY	FLOWS AND CAPACITY IN VEH/HR							AVERAGE SPEEDS IN MPH			
	MAIN ROUTE		SITE CAPA CITY	FLOW		AV.DEL PER VEH (MINS)	AVERAGE QUEUE (VEH)	MAIN ROUTE		SITE	
	DEMAND FLOW	PCT HEAVY		MAIN ROUTE	'DIVER TED'			WITHOUT WORK ZONE	WITH WORK ZONE		
MID-1 AM	424	0.0	1500	424	0	1.50	55	65.6	47.2	43.5	
1-2 AM	225	0.0	1500	225	0	0.44	0	66.0	59.1	44.6	
2-3 AM	208	0.0	1500	208	0	0.44	0	66.0	59.1	44.6	
3-4 AM	126	0.0	1500	126	0	0.43	0	66.1	59.4	45.0	
4-5 AM	131	0.0	1500	131	0	0.44	0	66.1	59.4	45.0	
5-6 AM	194	0.0	1500	194	0	0.44	0	66.0	59.2	44.7	
6-7 AM	269	0.0	1500	269	0	0.45	0	65.9	59.0	44.4	
7-8 AM	316	0.0	1500	316	0	0.45	0	65.8	58.8	44.2	
8-9 AM	597	0.0	1500	597	0	0.48	0	65.3	58.1	43.2	
9-10 AM	896	0.0	OFF	896	0	0.00	0	64.7	64.7	64.7	
10-11 AM	1278	0.0	OFF	1278	0	0.00	0	64.0	64.0	64.0	
11AM-NOON	1504	0.0	OFF	1504	0	0.00	0	63.6	63.6	63.6	
NOON-1PM	1656	0.0	OFF	1656	0	0.00	0	63.3	63.3	63.3	
1-2 PM	1659	0.0	OFF	1659	0	0.00	0	63.3	63.3	63.3	
2-3 PM	1702	0.0	OFF	1702	0	0.00	0	63.2	63.2	63.2	
3-4 PM	1746	0.0	OFF	1746	0	0.00	0	63.2	63.2	63.2	
4-5 PM	1707	0.0	OFF	1707	0	0.00	0	63.2	63.2	63.2	
5-6 PM	1488	0.0	OFF	1488	0	0.00	0	63.6	63.6	63.6	
6-7 PM	1269	0.0	OFF	1269	0	0.00	0	64.0	64.0	64.0	
7-8 PM	890	0.0	1500	890	0	0.51	0	64.7	57.3	42.0	
8-9 PM	596	0.0	1500	596	0	0.48	0	65.3	58.1	43.2	
9-10 PM	547	0.0	1500	547	0	0.48	0	65.4	58.2	43.3	
10-11 PM	633	0.0	1500	633	0	0.48	0	65.2	57.9	43.0	
11PM-MID	2703	0.0	1499	1792	912	12.90+	339	58.8	14.7	35.1	

"OFF" INDICATES NO ROAD WORK (ALL LANES OPEN TO TRAFFIC)

+ INDICATES QUEUEING EXCEEDS USER-SPECIFIED MAXIMUM LIMIT

*----- SITE BREAKDOWN DELAYS -----*	
BREAKDOWN DURATION (MINS)	0
RANGE OF QUEUE DELAY - MIN (VEH-H) MAX	0.0
AV BREAKDOWNS PER DAY	0.00
AV QUEUE DELAY/DAY (VEH-H)	0.0
AV TOTAL DELAY/DAY (VEH-H)	0.0

*----- SITE ACCIDENT DELAYS -----*	
BREAKDOWN DURATION (MINS)	0
RANGE OF QUEUE DELAY - MIN (VEH-H) MAX	0
AV BREAKDOWNS PER DAY	0
AV QUEUE DELAY/DAY (VEH-H)	0
AV TOTAL DELAY/DAY (VEH-H)	0

AVERAGE ACCIDENT NUMBERS (PIA/DAY)	
MAIN ROUTE WITHOUT WORKS	0.0152
MAIN ROUTE WITH WORKS	0.0141
'DIVERSION'	0.0014
PIA: Personal Injury Accidents	
IMPACTS ON ROAD USERS	
ROAD USER COSTS PER DAY	\$8,591
CONGESTED HOURS PER DAY*	1

\*Delays Exceeding User-Specified Maximum

**USH 41: STH 441 TO STH 55 (OUTAGMIE AND BROWN COUNTIES)  
NIGHTTIME CLOSURE  
NO DIVERSION ROUTE (MAX QUEUE METHOD)**

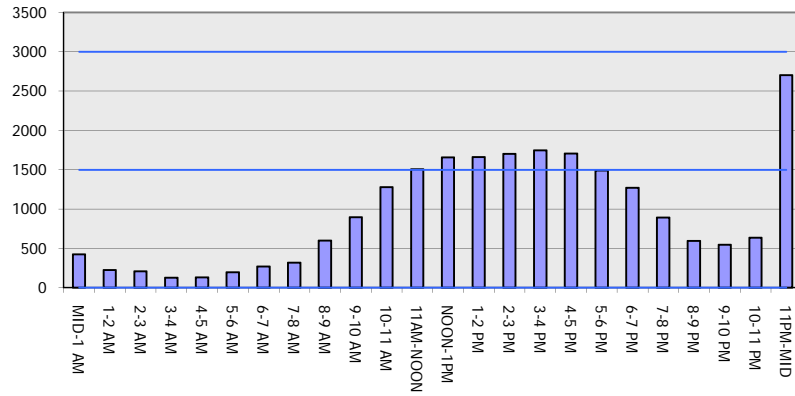
**OCTOBER**

Analyzed for 2009  
Construction Season

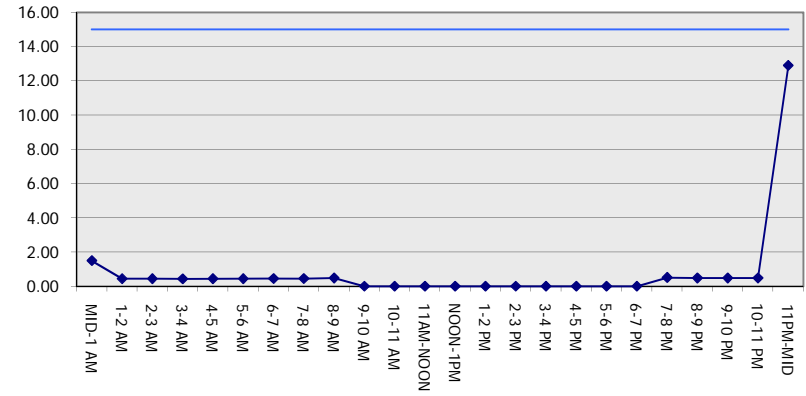
**GRAPHICAL REPRESENTATION OF TRAFFIC MODEL INPUT AND OUTPUT**

**SUNDAY SOUTHBOUND DIRECTION**

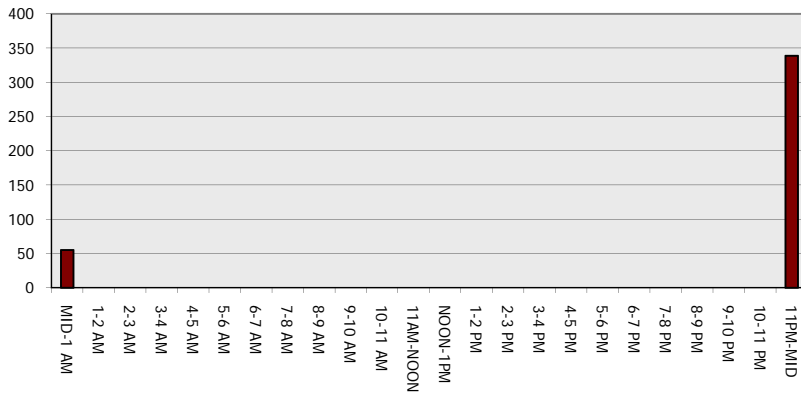
**Main Route - Traffic Demand (Vehicles Per Hour)**



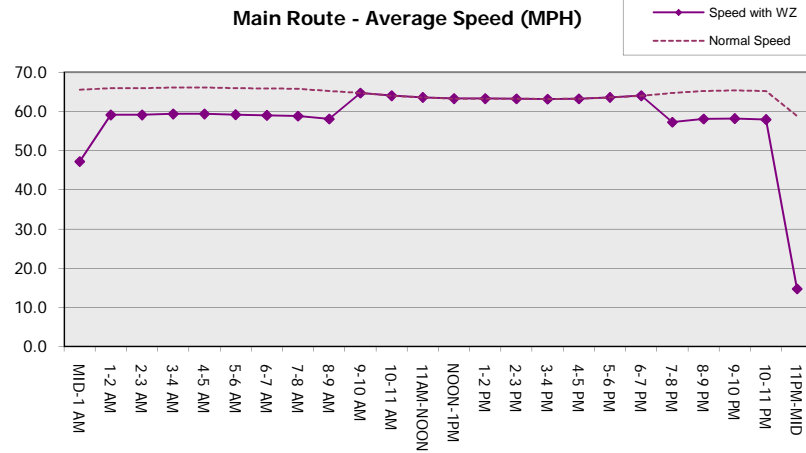
**Main Route Average Delay Per Vehicle (Minutes)**



**Main Route - Average Queue Length (Vehicles)**



**Main Route - Average Speed (MPH)**



**USH 41: STH 441 TO STH 55 (OUTAGMIE AND BROWN COUNTIES)  
NIGHTTIME CLOSURE  
NO DIVERSION ROUTE (MAX QUEUE METHOD)**

**OCTOBER**  
Analyzed for 2009  
Construction Season

**SUMMARY OF TRAFFIC MODEL OUTPUT**  
SUNDAY NORTHBOUND DIRECTION

TIME OF DAY	FLOWS AND CAPACITY IN VEH/HR						AVERAGE SPEEDS IN MPH			
	MAIN ROUTE		SITE CAPA CITY	FLOW		AV.DEL PER VEH (MINS)	AVERAGE QUEUE (VEH)	MAIN ROUTE		SITE
	DEMAND FLOW	PCT HEAVY		MAIN ROUTE	'DIVER TED'			WITHOUT WORK ZONE	WITH WORK ZONE	
MID-1 AM	327	0.0	1500	327	0	0.45	0	65.8	58.8	44.2
1-2 AM	215	0.0	1500	215	0	0.44	0	66.0	59.1	44.6
2-3 AM	224	0.0	1500	224	0	0.44	0	66.0	59.1	44.6
3-4 AM	134	0.0	1500	134	0	0.44	0	66.1	59.4	45.0
4-5 AM	109	0.0	1500	109	0	0.43	0	66.2	59.4	45.0
5-6 AM	151	0.0	1500	151	0	0.44	0	66.1	59.3	44.9
6-7 AM	214	0.0	1500	214	0	0.44	0	66.0	59.1	44.6
7-8 AM	310	0.0	1500	310	0	0.45	0	65.8	58.9	44.2
8-9 AM	552	0.0	1500	552	0	0.48	0	65.3	58.2	43.3
9-10 AM	758	0.0	OFF	758	0	0.00	0	65.0	65.0	65.0
10-11 AM	1116	0.0	OFF	1116	0	0.00	0	64.3	64.3	64.3
11AM-NOON	1499	0.0	OFF	1499	0	0.00	0	63.6	63.6	63.6
NOON-1PM	1744	0.0	OFF	1744	0	0.00	0	63.2	63.2	63.2
1-2 PM	1969	0.0	OFF	1969	0	0.00	0	62.7	62.7	62.7
2-3 PM	2697	0.0	OFF	2697	0	0.00	0	58.9	58.9	58.9
3-4 PM	3383	0.0	OFF	3383	0	0.00	0	51.9	51.9	51.9
4-5 PM	3274	0.0	OFF	3274	0	0.00	0	53.0	53.0	53.0
5-6 PM	2166	0.0	OFF	2166	0	0.00	0	62.3	62.3	62.3
6-7 PM	1179	0.0	OFF	1179	0	0.00	0	64.2	64.2	64.2
7-8 PM	793	0.0	1500	793	0	0.50	0	64.9	57.5	42.4
8-9 PM	494	0.0	1500	494	0	0.47	0	65.5	58.3	43.5
9-10 PM	443	0.0	1500	443	0	0.47	0	65.6	58.5	43.7
10-11 PM	300	0.0	1500	300	0	0.45	0	65.8	58.9	44.3
11PM-MID	269	0.0	1500	269	0	0.45	0	65.9	59.0	44.4

"OFF" INDICATES NO ROAD WORK (ALL LANES OPEN TO TRAFFIC)

*----- SITE BREAKDOWN DELAYS -----*	
BREAKDOWN DURATION (MINS)	0
RANGE OF QUEUE DELAY - MIN (VEH-H) MAX	0.0
AV BREAKDOWNS PER DAY	0.00
AV QUEUE DELAY/DAY (VEH-H)	0.0
AV TOTAL DELAY/DAY (VEH-H)	0.0

*----- SITE ACCIDENT DELAYS -----*	
BREAKDOWN DURATION (MINS)	0
RANGE OF QUEUE DELAY - MIN (VEH-H) MAX	0
AV BREAKDOWNS PER DAY	0
AV QUEUE DELAY/DAY (VEH-H)	0
AV TOTAL DELAY/DAY (VEH-H)	0

AVERAGE ACCIDENT NUMBERS (PIA/DAY)	
MAIN ROUTE WITHOUT WORKS	0.0163
MAIN ROUTE WITH WORKS	0.0160
'DIVERSION'	0.0000

PIA: Personal Injury Accidents

ECONOMIC IMPACT ON ROAD USERS	
ROAD USER COSTS PER DAY	\$479
CONGESTED HOURS PER DAY*	0

\*Delays Exceeding User-Specified Maximum

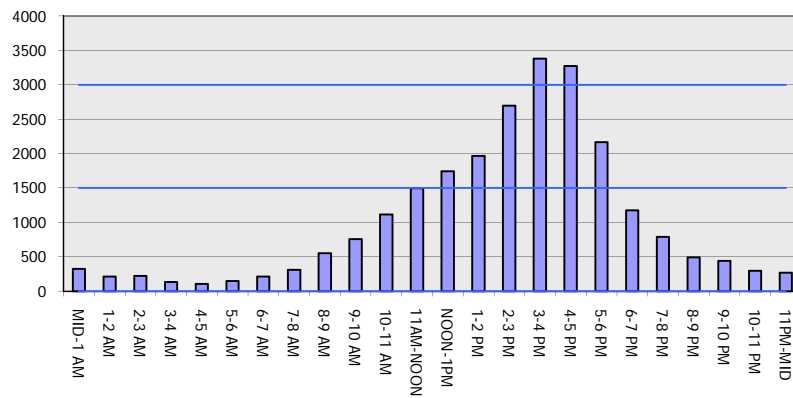
**USH 41: STH 441 TO STH 55 (OUTAGMIE AND BROWN COUNTIES)**  
**NIGHTTIME CLOSURE**  
**NO DIVERSION ROUTE (MAX QUEUE METHOD)**

**OCTOBER**

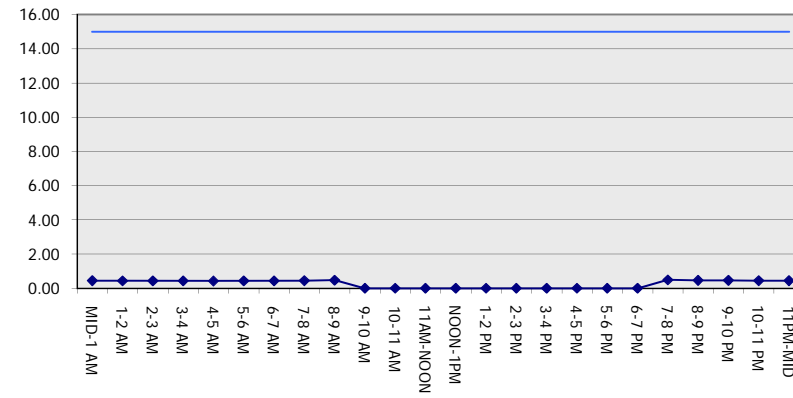
Analyzed for 2009  
 Construction Season

**GRAPHICAL REPRESENTATION OF TRAFFIC MODEL INPUT AND OUTPUT**  
**SUNDAY NORTHBOUND DIRECTION**

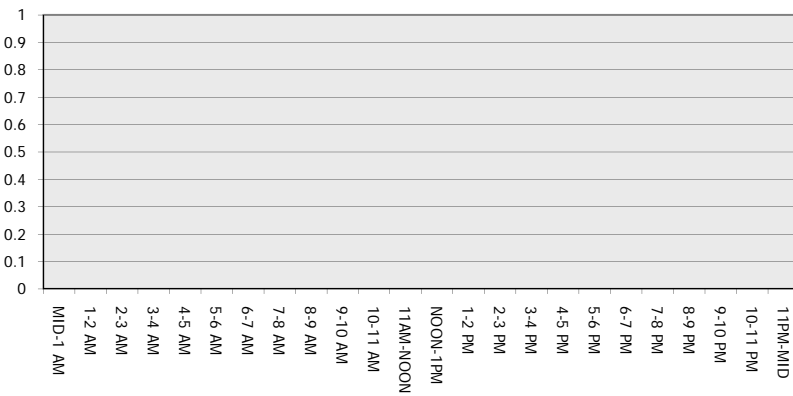
**Main Route - Traffic Demand (Vehicles Per Hour)**



**Main Route Average Delay Per Vehicle (Minutes)**



**Main Route - Average Queue Length (Vehicles)**



**Main Route - Average Speed (MPH)**

