

USH 41: STH 441 TO STH 55 (OUTAGMIE AND BROWN COUNTIES) NIGHTTIME CLOSURE NO DIVERSION ROUTE (MAX QUEUE METHOD)	OCTOBER
	Analyzed for 2009 Construction Season

SUMMARY OF TRAFFIC MODEL OUTPUT

MON-THUR SOUTHBOUND DIRECTION

TIME OF DAY	FLOWS AND CAPACITY IN VEH/HR						AVERAGE SPEEDS IN MPH				
	MAIN ROUTE		SITE CAPA CITY	FLOW		AV.DEL PER VEH (MINS)	AVERAGE QUEUE (VEH)	MAIN ROUTE		SITE	
	DEMAND FLOW	PCT HEAVY		MAIN ROUTE	'DIVER TED'			WITHOUT WORK ZONE	WITH WORK ZONE		
MID-1 AM	973	0.0	1500	973	0	0.52	0	64.6	57.0	41.8	
1-2 AM	341	0.0	1500	341	0	0.46	0	65.8	58.7	44.2	
2-3 AM	129	0.0	1500	129	0	0.43	0	66.1	59.4	45.0	
3-4 AM	166	0.0	1500	166	0	0.44	0	66.1	59.2	44.8	
4-5 AM	347	0.0	1500	347	0	0.46	0	65.8	58.7	44.1	
5-6 AM	962	0.0	OFF	962	0	0.00	0	64.6	64.6	64.6	
6-7 AM	1992	0.0	OFF	1992	0	0.00	0	62.7	62.7	62.7	
7-8 AM	2912	0.0	OFF	2912	0	0.00	0	56.7	56.7	56.7	
8-9 AM	2020	0.0	OFF	2020	0	0.00	0	62.6	62.6	62.6	
9-10 AM	1582	0.0	OFF	1582	0	0.00	0	63.5	63.5	63.5	
10-11 AM	1559	0.0	OFF	1559	0	0.00	0	63.5	63.5	63.5	
11AM-NOON	1618	0.0	OFF	1618	0	0.00	0	63.3	63.3	63.3	
NOON-1PM	1669	0.0	OFF	1669	0	0.00	0	63.3	63.3	63.3	
1-2 PM	1707	0.0	OFF	1707	0	0.00	0	63.2	63.2	63.2	
2-3 PM	1869	0.0	OFF	1869	0	0.00	0	62.9	62.9	62.9	
3-4 PM	2147	0.0	OFF	2147	0	0.00	0	62.4	62.4	62.4	
4-5 PM	2575	0.0	OFF	2575	0	0.00	0	60.1	60.1	60.1	
5-6 PM	2505	0.0	OFF	2505	0	0.00	0	60.9	60.9	60.9	
6-7 PM	1375	0.0	OFF	1375	0	0.00	0	63.8	63.8	63.8	
7-8 PM	911	0.0	1500	911	0	0.51	0	64.7	57.2	42.0	
8-9 PM	688	0.0	1500	688	0	0.49	0	65.1	57.8	42.8	
9-10 PM	641	0.0	1500	641	0	0.48	0	65.2	57.9	43.0	
10-11 PM	474	0.0	1500	474	0	0.47	0	65.5	58.4	43.6	
11PM-MID	266	0.0	1500	266	0	0.45	0	65.9	59.0	44.4	

"OFF" INDICATES NO ROAD WORK (ALL LANES OPEN TO TRAFFIC)

----- SITE BREAKDOWN DELAYS -----	
BREAKDOWN DURATION (MINS)	0
RANGE OF QUEUE DELAY - MIN (VEH-H) MAX	0.0
AV BREAKDOWNS PER DAY	0.00
AV QUEUE DELAY/DAY (VEH-H)	0.0
AV TOTAL DELAY/DAY (VEH-H)	0.0

----- SITE ACCIDENT DELAYS -----	
BREAKDOWN DURATION (MINS)	0
RANGE OF QUEUE DELAY - MIN (VEH-H) MAX	0
AV BREAKDOWNS PER DAY	0
AV QUEUE DELAY/DAY (VEH-H)	0
AV TOTAL DELAY/DAY (VEH-H)	0

AVERAGE ACCIDENT NUMBERS (PIA/DAY)	
MAIN ROUTE WITHOUT WORKS	0.0210
MAIN ROUTE WITH WORKS	0.0207
'DIVERSION'	0.0000
<small>PIA: Personal Injury Accidents</small>	
IMPACTS ON ROAD USERS	
ROAD USER COSTS PER DAY	\$487
CONGESTED HOURS PER DAY*	0

*Delays Exceeding User-Specified Maximum

USH 41: STH 441 TO STH 55 (OUTAGMIE AND BROWN COUNTIES)
NIGHTTIME CLOSURE
NO DIVERSION ROUTE (MAX QUEUE METHOD)

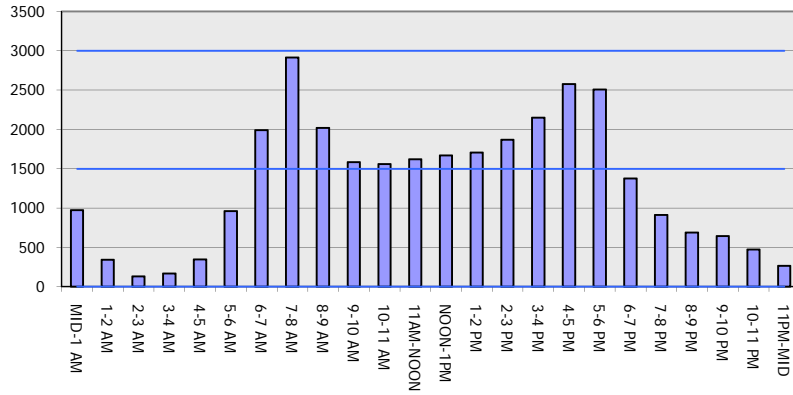
OCTOBER

Analyzed for 2009
 Construction Season

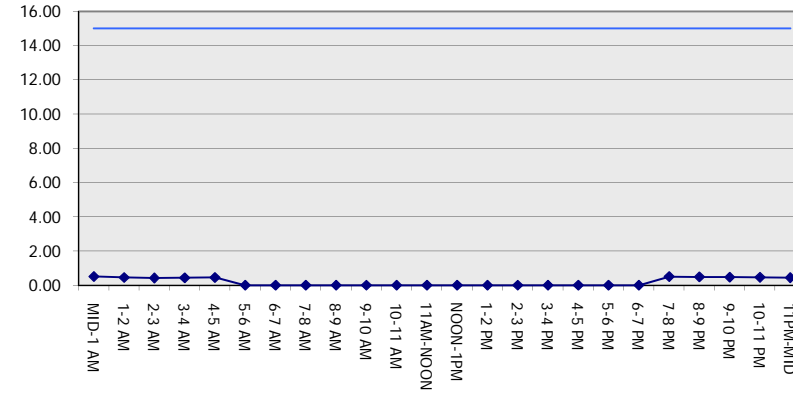
GRAPHICAL REPRESENTATION OF TRAFFIC MODEL INPUT AND OUTPUT

MON-THUR SOUTHBOUND DIRECTION

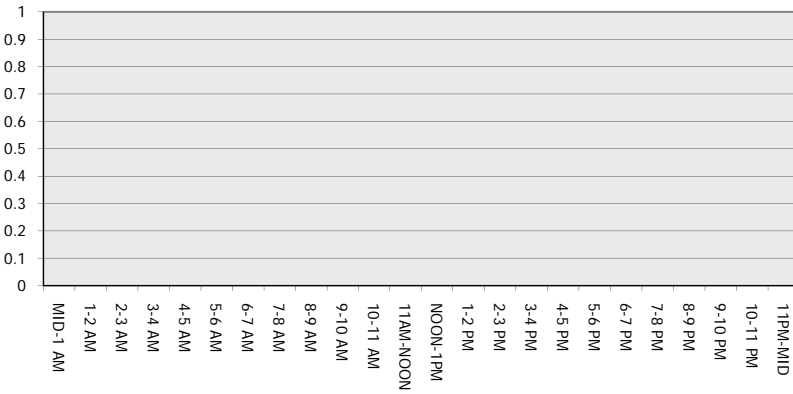
Main Route - Traffic Demand (Vehicles Per Hour)



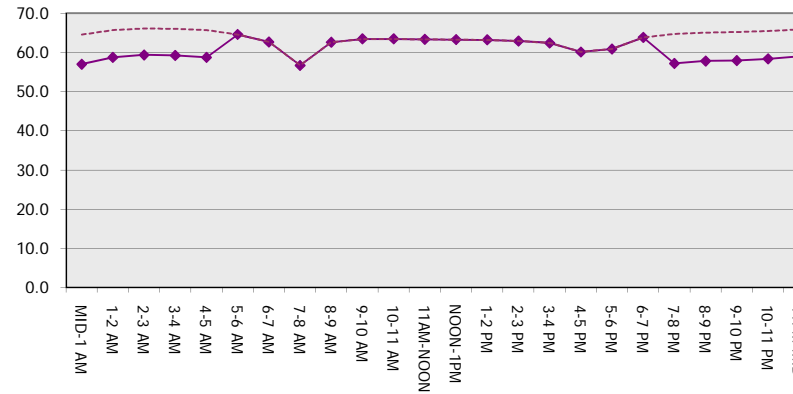
Main Route Average Delay Per Vehicle (Minutes)



Main Route - Average Queue Length (Vehicles)



Main Route - Average Speed (MPH)



USH 41: STH 441 TO STH 55 (OUTAGMIE AND BROWN COUNTIES) NIGHTTIME CLOSURE NO DIVERSION ROUTE (MAX QUEUE METHOD)	OCTOBER
	Analyzed for 2009 Construction Season

SUMMARY OF TRAFFIC MODEL OUTPUT

MON-THUR NORTHBOUND DIRECTION

TIME OF DAY	FLOWS AND CAPACITY IN VEH/HR						AVERAGE SPEEDS IN MPH			
	MAIN ROUTE		SITE CAPA CITY	FLOW		AV.DEL PER VEH (MINS)	AVERAGE QUEUE (VEH)	MAIN ROUTE		SITE
	DEMAND FLOW	PCT HEAVY		MAIN ROUTE	'DIVER TED'			WITHOUT WORK ZONE	WITH WORK ZONE	
MID-1 AM	165	0.0	1500	165	0	0.44	0	66.1	59.2	44.8
1-2 AM	113	0.0	1500	113	0	0.43	0	66.2	59.4	45.0
2-3 AM	129	0.0	1500	129	0	0.43	0	66.1	59.4	45.0
3-4 AM	111	0.0	1500	111	0	0.43	0	66.2	59.4	45.0
4-5 AM	273	0.0	1500	273	0	0.45	0	65.9	58.9	44.4
5-6 AM	808	0.0	OFF	808	0	0.00	0	64.9	64.9	64.9
6-7 AM	1657	0.0	OFF	1657	0	0.00	0	63.3	63.3	63.3
7-8 AM	2429	0.0	OFF	2429	0	0.00	0	61.6	61.6	61.6
8-9 AM	1721	0.0	OFF	1721	0	0.00	0	63.2	63.2	63.2
9-10 AM	1458	0.0	OFF	1458	0	0.00	0	63.7	63.7	63.7
10-11 AM	1443	0.0	OFF	1443	0	0.00	0	63.7	63.7	63.7
11AM-NOON	1518	0.0	OFF	1518	0	0.00	0	63.5	63.5	63.5
NOON-1PM	1566	0.0	OFF	1566	0	0.00	0	63.5	63.5	63.5
1-2 PM	1662	0.0	OFF	1662	0	0.00	0	63.3	63.3	63.3
2-3 PM	1933	0.0	OFF	1933	0	0.00	0	62.8	62.8	62.8
3-4 PM	2291	0.0	OFF	2291	0	0.00	0	62.1	62.1	62.1
4-5 PM	2817	0.0	OFF	2817	0	0.00	0	57.6	57.6	57.6
5-6 PM	2500	0.0	OFF	2500	0	0.00	0	60.9	60.9	60.9
6-7 PM	1450	0.0	OFF	1450	0	0.00	0	63.7	63.7	63.7
7-8 PM	1020	0.0	1500	1020	0	0.52	0	64.5	56.9	41.6
8-9 PM	910	0.0	1500	910	0	0.51	0	64.7	57.2	42.0
9-10 PM	733	0.0	1500	733	0	0.49	0	65.0	57.7	42.7
10-11 PM	425	0.0	1500	425	0	0.46	0	65.6	58.5	43.8
11PM-MID	271	0.0	1500	271	0	0.45	0	65.9	58.9	44.4

"OFF" INDICATES NO ROAD WORK (ALL LANES OPEN TO TRAFFIC)

----- SITE BREAKDOWN DELAYS -----	
BREAKDOWN DURATION (MINS)	0
RANGE OF QUEUE DELAY - MIN (VEH-H) MAX	0.0
AV BREAKDOWNS PER DAY	0.00
AV QUEUE DELAY/DAY (VEH-H)	0.0
AV TOTAL DELAY/DAY (VEH-H)	0.0

----- SITE ACCIDENT DELAYS -----	
BREAKDOWN DURATION (MINS)	0
RANGE OF QUEUE DELAY - MIN (VEH-H) MAX	0
AV BREAKDOWNS PER DAY	0
AV QUEUE DELAY/DAY (VEH-H)	0
AV TOTAL DELAY/DAY (VEH-H)	0

AVERAGE ACCIDENT NUMBERS (PIA/DAY)	
MAIN ROUTE WITHOUT WORKS	0.0197
MAIN ROUTE WITH WORKS	0.0194
'DIVERSION'	0.0000

PIA: Personal Injury Accidents

ECONOMIC IMPACT ON ROAD USERS	
ROAD USER COSTS PER DAY	\$409
CONGESTED HOURS PER DAY*	0

*Delays Exceeding User-Specified Maximum

USH 41: STH 441 TO STH 55 (OUTAGMIE AND BROWN COUNTIES)
NIGHTTIME CLOSURE
NO DIVERSION ROUTE (MAX QUEUE METHOD)

OCTOBER

Analyzed for 2009
 Construction Season

GRAPHICAL REPRESENTATION OF TRAFFIC MODEL INPUT AND OUTPUT
MON-THUR NORTHBOUND DIRECTION

