

**USH 41: STH 441 TO STH 55 (OUTAGMIE AND BROWN COUNTIES)
NIGHTTIME CLOSURE
NO DIVERSION ROUTE (MAX QUEUE METHOD)**

OCTOBER
Analyzed for 2009
Construction Season

SUMMARY OF TRAFFIC MODEL OUTPUT
FRIDAY SOUTHBOUND DIRECTION

TIME OF DAY	FLOWS AND CAPACITY IN VEH/HR						AVERAGE SPEEDS IN MPH				
	MAIN ROUTE		SITE CAPA CITY	FLOW		AV.DEL PER VEH (MINS)	AVERAGE QUEUE (VEH)	MAIN ROUTE		SITE	
	DEMAND FLOW	PCT HEAVY		MAIN ROUTE	'DIVER TED'			WITHOUT WORK ZONE	WITH WORK ZONE		
MID-1 AM	187	0.0	1500	187	0	0.44	0	66.0	59.2	44.7	
1-2 AM	149	0.0	1500	149	0	0.44	0	66.1	59.3	44.9	
2-3 AM	131	0.0	1500	131	0	0.44	0	66.1	59.4	45.0	
3-4 AM	150	0.0	1500	150	0	0.44	0	66.1	59.3	44.9	
4-5 AM	371	0.0	1500	371	0	0.46	0	65.7	58.7	44.0	
5-6 AM	813	0.0	OFF	813	0	0.00	0	64.9	64.9	64.9	
6-7 AM	1707	0.0	OFF	1707	0	0.00	0	63.2	63.2	63.2	
7-8 AM	2689	0.0	OFF	2689	0	0.00	0	58.9	58.9	58.9	
8-9 AM	1814	0.0	OFF	1814	0	0.00	0	63.0	63.0	63.0	
9-10 AM	1546	0.0	OFF	1546	0	0.00	0	63.5	63.5	63.5	
10-11 AM	1630	0.0	OFF	1630	0	0.00	0	63.3	63.3	63.3	
11AM-NOON	1795	0.0	OFF	1795	0	0.00	0	63.0	63.0	63.0	
NOON-1PM	1847	0.0	OFF	1847	0	0.00	0	63.0	63.0	63.0	
1-2 PM	1828	0.0	OFF	1828	0	0.00	0	63.0	63.0	63.0	
2-3 PM	2099	0.0	OFF	2099	0	0.00	0	62.5	62.5	62.5	
3-4 PM	2423	0.0	OFF	2423	0	0.00	0	61.7	61.7	61.7	
4-5 PM	2625	0.0	OFF	2625	0	0.00	0	59.6	59.6	59.6	
5-6 PM	2527	0.0	OFF	2527	0	0.00	0	60.6	60.6	60.6	
6-7 PM	1578	0.0	OFF	1578	0	0.00	0	63.5	63.5	63.5	
7-8 PM	950	0.0	1500	950	0	0.51	0	64.6	57.1	41.9	
8-9 PM	792	0.0	1500	792	0	0.50	0	64.9	57.5	42.4	
9-10 PM	816	0.0	1500	816	0	0.50	0	64.9	57.4	42.4	
10-11 PM	680	0.0	1500	680	0	0.49	0	65.1	57.8	42.8	
11PM-MID	466	0.0	1500	466	0	0.47	0	65.5	58.4	43.7	

"OFF" INDICATES NO ROAD WORK (ALL LANES OPEN TO TRAFFIC)

----- SITE BREAKDOWN DELAYS -----	
BREAKDOWN DURATION (MINS)	0
RANGE OF QUEUE DELAY - MIN (VEH-H) MAX	0.0
AV BREAKDOWNS PER DAY	0.00
AV QUEUE DELAY/DAY (VEH-H)	0.0
AV TOTAL DELAY/DAY (VEH-H)	0.0

----- SITE ACCIDENT DELAYS -----	
BREAKDOWN DURATION (MINS)	0
RANGE OF QUEUE DELAY - MIN (VEH-H) MAX	0
AV BREAKDOWNS PER DAY	0
AV QUEUE DELAY/DAY (VEH-H)	0
AV TOTAL DELAY/DAY (VEH-H)	0

AVERAGE ACCIDENT NUMBERS (PIA/DAY)	
MAIN ROUTE WITHOUT WORKS	0.0211
MAIN ROUTE WITH WORKS	0.0208
'DIVERSION'	0.0000
PIA: Personal Injury Accidents	
IMPACTS ON ROAD USERS	
ROAD USER COSTS PER DAY	\$491
CONGESTED HOURS PER DAY*	0

*Delays Exceeding User-Specified Maximum

USH 41: STH 441 TO STH 55 (OUTAGMIE AND BROWN COUNTIES)
NIGHTTIME CLOSURE
NO DIVERSION ROUTE (MAX QUEUE METHOD)

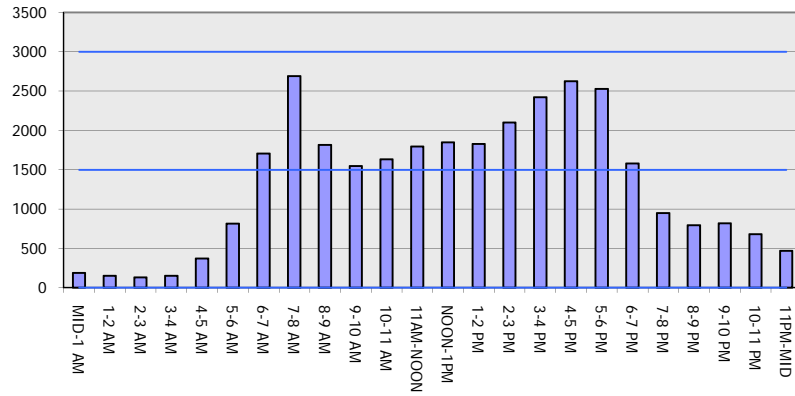
OCTOBER

Analyzed for 2009
 Construction Season

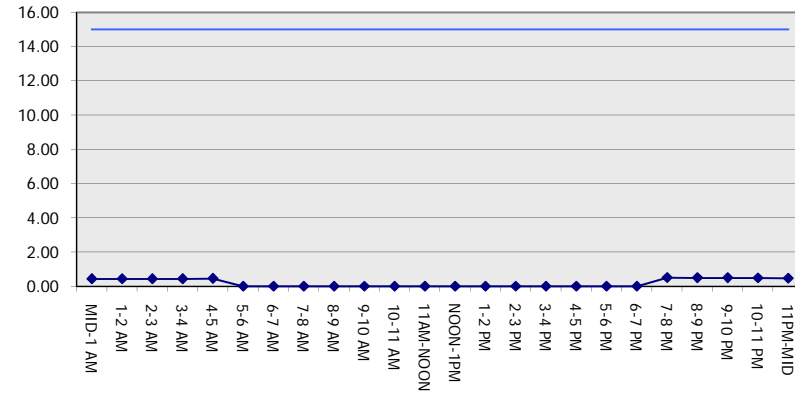
GRAPHICAL REPRESENTATION OF TRAFFIC MODEL INPUT AND OUTPUT

FRIDAY SOUTHBOUND DIRECTION

Main Route - Traffic Demand (Vehicles Per Hour)



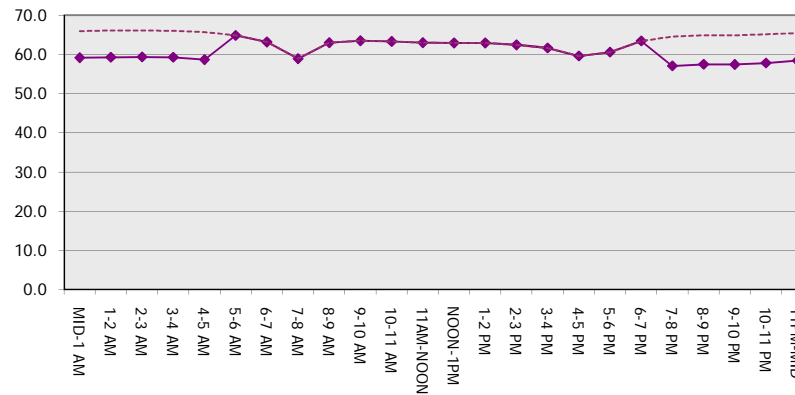
Main Route Average Delay Per Vehicle (Minutes)



Main Route - Average Queue Length (Vehicles)



Main Route - Average Speed (MPH)



USH 41: STH 441 TO STH 55 (OUTAGMIE AND BROWN COUNTIES) NIGHTTIME CLOSURE NO DIVERSION ROUTE (MAX QUEUE METHOD)	OCTOBER
	Analyzed for 2009 Construction Season

SUMMARY OF TRAFFIC MODEL OUTPUT

FRIDAY NORTHBOUND DIRECTION

TIME OF DAY	FLOWS AND CAPACITY IN VEH/HR							AVERAGE SPEEDS IN MPH		
	MAIN ROUTE		SITE CAPA CITY	FLOW		AV.DEL PER VEH (MINS)	AVERAGE QUEUE (VEH)	MAIN ROUTE		SITE
	DEMAND FLOW	PCT HEAVY		MAIN ROUTE	'DIVER TED'			WITHOUT WORK ZONE	WITH WORK ZONE	
MID-1 AM	216	0.0	1500	216	0	0.44	0	66.0	59.1	44.6
1-2 AM	137	0.0	1500	137	0	0.44	0	66.1	59.4	45.0
2-3 AM	154	0.0	1500	154	0	0.44	0	66.1	59.3	44.8
3-4 AM	124	0.0	1500	124	0	0.43	0	66.1	59.4	45.0
4-5 AM	284	0.0	1500	284	0	0.45	0	65.8	58.9	44.3
5-6 AM	759	0.0	OFF	759	0	0.00	0	65.0	65.0	65.0
6-7 AM	1516	0.0	OFF	1516	0	0.00	0	63.6	63.6	63.6
7-8 AM	2468	0.0	OFF	2468	0	0.00	0	61.2	61.2	61.2
8-9 AM	1743	0.0	OFF	1743	0	0.00	0	63.2	63.2	63.2
9-10 AM	1547	0.0	OFF	1547	0	0.00	0	63.5	63.5	63.5
10-11 AM	1760	0.0	OFF	1760	0	0.00	0	63.1	63.1	63.1
11AM-NOON	1825	0.0	OFF	1825	0	0.00	0	63.0	63.0	63.0
NOON-1PM	2112	0.0	OFF	2112	0	0.00	0	62.5	62.5	62.5
1-2 PM	2176	0.0	OFF	2176	0	0.00	0	62.3	62.3	62.3
2-3 PM	2433	0.0	OFF	2433	0	0.00	0	61.5	61.5	61.5
3-4 PM	2759	0.0	OFF	2759	0	0.00	0	58.2	58.2	58.2
4-5 PM	2989	0.0	OFF	2989	0	0.00	0	55.9	55.9	55.9
5-6 PM	2813	0.0	OFF	2813	0	0.00	0	57.7	57.7	57.7
6-7 PM	2021	0.0	OFF	2021	0	0.00	0	62.6	62.6	62.6
7-8 PM	1452	0.0	1499	1452	0	1.33	11	63.7	47.7	32.5
8-9 PM	1116	0.0	1500	1116	0	0.53	0	64.3	56.6	41.3
9-10 PM	997	0.0	1500	997	0	0.52	0	64.5	56.9	41.7
10-11 PM	696	0.0	1500	696	0	0.49	0	65.1	57.8	42.8
11PM-MID	440	0.0	1500	440	0	0.47	0	65.6	58.5	43.7

"OFF" INDICATES NO ROAD WORK (ALL LANES OPEN TO TRAFFIC)

----- SITE BREAKDOWN DELAYS -----	
BREAKDOWN DURATION (MINS)	0
RANGE OF QUEUE DELAY - MIN (VEH-H) MAX	0.0
AV BREAKDOWNS PER DAY	0.00
AV QUEUE DELAY/DAY (VEH-H)	0.0
AV TOTAL DELAY/DAY (VEH-H)	0.0

----- SITE ACCIDENT DELAYS -----	
BREAKDOWN DURATION (MINS)	0
RANGE OF QUEUE DELAY - MIN (VEH-H) MAX	0
AV BREAKDOWNS PER DAY	0
AV QUEUE DELAY/DAY (VEH-H)	0
AV TOTAL DELAY/DAY (VEH-H)	0

AVERAGE ACCIDENT NUMBERS (PIA/DAY)	
MAIN ROUTE WITHOUT WORKS	0.0231
MAIN ROUTE WITH WORKS	0.0227
'DIVERSION'	0.0000

PIA: Personal Injury Accidents

ECONOMIC IMPACT ON ROAD USERS	
ROAD USER COSTS PER DAY	\$859
CONGESTED HOURS PER DAY*	0

*Delays Exceeding User-Specified Maximum

**USH 41: STH 441 TO STH 55 (OUTAGMIE AND BROWN COUNTIES)
NIGHTTIME CLOSURE
NO DIVERSION ROUTE (MAX QUEUE METHOD)**

OCTOBER

Analyzed for 2009
Construction Season

**GRAPHICAL REPRESENTATION OF TRAFFIC MODEL INPUT AND OUTPUT
FRIDAY NORTHBOUND DIRECTION**

