

<b>USH 41: USH 141 TO CTH B (BROWN AND OCONTO COUNTIES)</b> <b>NIGHTTIME CLOSURE</b> <b>NO DIVERSION ROUTE (MAX QUEUE METHOD)</b>	<b>OCTOBER</b>
	Analyzed for 2009 Construction Season

**SUMMARY OF TRAFFIC MODEL OUTPUT**

FRIDAY      SOUTHBOUND DIRECTION

TIME OF DAY	FLOWS AND CAPACITY IN VEH/HR						AVERAGE SPEEDS IN MPH			
	MAIN ROUTE		SITE CAPA CITY	FLOW		AV.DEL PER VEH (MINS)	AVERAGE QUEUE (VEH)	MAIN ROUTE		SITE
	DEMAND FLOW	PCT HEAVY		MAIN ROUTE	'DIVER TED'			WITHOUT WORK ZONE	WITH WORK ZONE	
MID-1 AM	53	0.0	1500	53	0	0.43	0	66.3	63.5	45.3
1-2 AM	38	0.0	1500	38	0	0.43	0	66.3	63.5	45.3
2-3 AM	75	0.0	1500	75	0	0.43	0	66.3	63.4	45.2
3-4 AM	84	0.0	1500	84	0	0.43	0	66.2	63.4	45.1
4-5 AM	295	0.0	1500	295	0	0.45	0	65.8	62.9	44.3
5-6 AM	825	0.0	OFF	825	0	0.00	0	64.8	64.8	64.8
6-7 AM	1497	0.0	OFF	1497	0	0.00	0	63.6	63.6	63.6
7-8 AM	1748	0.0	OFF	1748	0	0.00	0	63.2	63.2	63.2
8-9 AM	1097	0.0	OFF	1097	0	0.00	0	64.3	64.3	64.3
9-10 AM	949	0.0	OFF	949	0	0.00	0	64.6	64.6	64.6
10-11 AM	961	0.0	OFF	961	0	0.00	0	64.6	64.6	64.6
11AM-NOON	836	0.0	OFF	836	0	0.00	0	64.8	64.8	64.8
NOON-1PM	861	0.0	OFF	861	0	0.00	0	64.8	64.8	64.8
1-2 PM	922	0.0	OFF	922	0	0.00	0	64.6	64.6	64.6
2-3 PM	944	0.0	OFF	944	0	0.00	0	64.6	64.6	64.6
3-4 PM	975	0.0	OFF	975	0	0.00	0	64.6	64.6	64.6
4-5 PM	1156	0.0	OFF	1156	0	0.00	0	64.2	64.2	64.2
5-6 PM	1109	0.0	OFF	1109	0	0.00	0	64.3	64.3	64.3
6-7 PM	780	0.0	OFF	780	0	0.00	0	65.0	65.0	65.0
7-8 PM	674	0.0	1500	674	0	0.49	0	65.1	62.0	42.8
8-9 PM	449	0.0	1500	449	0	0.47	0	65.6	62.5	43.7
9-10 PM	358	0.0	1500	358	0	0.46	0	65.7	62.7	44.0
10-11 PM	227	0.0	1500	227	0	0.44	0	66.0	63.0	44.6
11PM-MID	126	0.0	1500	126	0	0.43	0	66.1	63.3	45.0

"OFF" INDICATES NO ROAD WORK (ALL LANES OPEN TO TRAFFIC)

*----- SITE BREAKDOWN DELAYS -----*	
BREAKDOWN DURATION (MINS)	0
RANGE OF QUEUE DELAY - MIN (VEH-H) MAX	0.0
AV BREAKDOWNS PER DAY	0.00
AV QUEUE DELAY/DAY (VEH-H)	0.0
AV TOTAL DELAY/DAY (VEH-H)	0.0

*----- SITE ACCIDENT DELAYS -----*	
BREAKDOWN DURATION (MINS)	0
RANGE OF QUEUE DELAY - MIN (VEH-H) MAX	0
AV BREAKDOWNS PER DAY	0
AV QUEUE DELAY/DAY (VEH-H)	0
AV TOTAL DELAY/DAY (VEH-H)	0

AVERAGE ACCIDENT NUMBERS (PIA/DAY)	
MAIN ROUTE WITHOUT WORKS	0.0287
MAIN ROUTE WITH WORKS	0.0286
'DIVERSION'	0.0000
<small>PIA: Personal Injury Accidents</small>	
IMPACTS ON ROAD USERS	
ROAD USER COSTS PER DAY	\$237
CONGESTED HOURS PER DAY*	0

\*Delays Exceeding User-Specified Maximum

**USH 41: USH 141 TO CTH B (BROWN AND OCONTO COUNTIES)  
NIGHTTIME CLOSURE  
NO DIVERSION ROUTE (MAX QUEUE METHOD)**

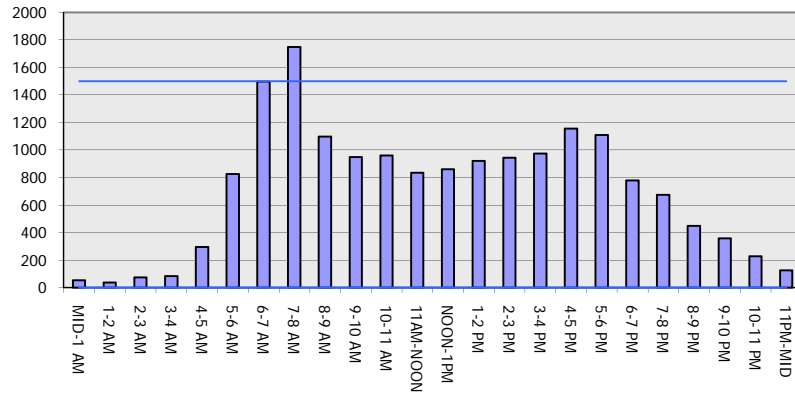
**OCTOBER**

Analyzed for 2009  
Construction Season

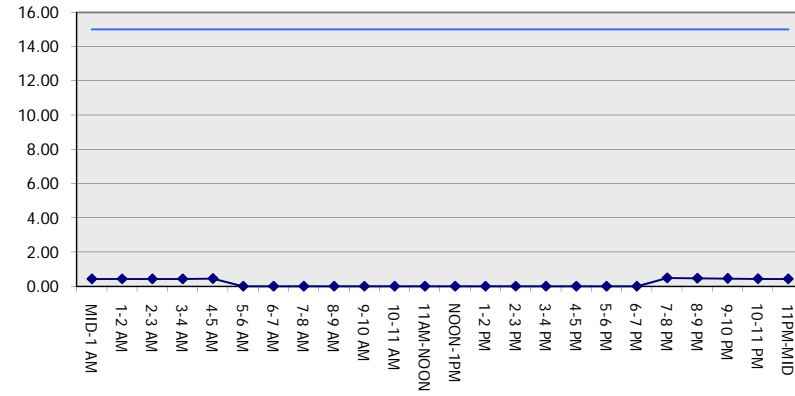
**GRAPHICAL REPRESENTATION OF TRAFFIC MODEL INPUT AND OUTPUT**

**FRIDAY SOUTHBOUND DIRECTION**

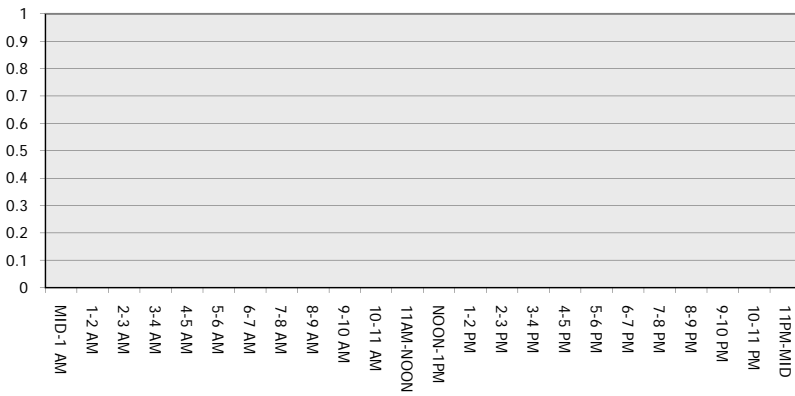
**Main Route - Traffic Demand (Vehicles Per Hour)**



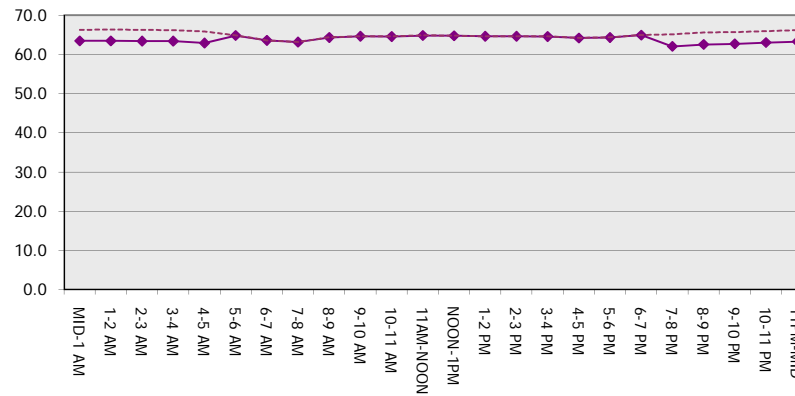
**Main Route Average Delay Per Vehicle (Minutes)**



**Main Route - Average Queue Length (Vehicles)**



**Main Route - Average Speed (MPH)**



<b>USH 41: USH 141 TO CTH B (BROWN AND OCONTO COUNTIES)</b> <b>NIGHTTIME CLOSURE</b> <b>NO DIVERSION ROUTE (MAX QUEUE METHOD)</b>	<b>OCTOBER</b>
	Analyzed for 2009 Construction Season

**SUMMARY OF TRAFFIC MODEL OUTPUT**

FRIDAY NORTHBOUND DIRECTION

TIME OF DAY	FLOWS AND CAPACITY IN VEH/HR						AVERAGE SPEEDS IN MPH			
	MAIN ROUTE		SITE CAPA CITY	FLOW		AV.DEL PER VEH (MINS)	AVERAGE QUEUE (VEH)	MAIN ROUTE		SITE
	DEMAND FLOW	PCT HEAVY		MAIN ROUTE	'DIVER TED'			WITHOUT WORK ZONE	WITH WORK ZONE	
MID-1 AM	115	0.0	1500	115	0	0.43	0	66.2	63.3	45.0
1-2 AM	104	0.0	1500	104	0	0.43	0	66.2	63.3	45.1
2-3 AM	91	0.0	1500	91	0	0.43	0	66.2	63.3	45.1
3-4 AM	82	0.0	1500	82	0	0.43	0	66.3	63.4	45.1
4-5 AM	111	0.0	1500	111	0	0.43	0	66.2	63.3	45.0
5-6 AM	269	0.0	OFF	269	0	0.00	0	65.9	65.9	65.9
6-7 AM	512	0.0	OFF	512	0	0.00	0	65.5	65.5	65.5
7-8 AM	612	0.0	OFF	612	0	0.00	0	65.3	65.3	65.3
8-9 AM	633	0.0	OFF	633	0	0.00	0	65.2	65.2	65.2
9-10 AM	701	0.0	OFF	701	0	0.00	0	65.1	65.1	65.1
10-11 AM	854	0.0	OFF	854	0	0.00	0	64.8	64.8	64.8
11AM-NOON	914	0.0	OFF	914	0	0.00	0	64.7	64.7	64.7
NOON-1PM	1049	0.0	OFF	1049	0	0.00	0	64.5	64.5	64.5
1-2 PM	1302	0.0	OFF	1302	0	0.00	0	64.0	64.0	64.0
2-3 PM	1546	0.0	OFF	1546	0	0.00	0	63.5	63.5	63.5
3-4 PM	1957	0.0	OFF	1957	0	0.00	0	62.7	62.7	62.7
4-5 PM	2295	0.0	OFF	2295	0	0.00	0	62.1	62.1	62.1
5-6 PM	2313	0.0	OFF	2313	0	0.00	0	62.1	62.1	62.1
6-7 PM	1652	0.0	OFF	1652	0	0.00	0	63.3	63.3	63.3
7-8 PM	1123	0.0	1500	1123	0	0.54	0	64.3	61.0	41.1
8-9 PM	858	0.0	1500	858	0	0.51	0	64.8	61.6	42.2
9-10 PM	746	0.0	1500	746	0	0.49	0	65.0	61.9	42.6
10-11 PM	532	0.0	1500	532	0	0.47	0	65.4	62.3	43.4
11PM-MID	334	0.0	1500	334	0	0.45	0	65.8	62.8	44.2

"OFF" INDICATES NO ROAD WORK (ALL LANES OPEN TO TRAFFIC)

*----- SITE BREAKDOWN DELAYS -----*	
BREAKDOWN DURATION (MINS)	0
RANGE OF QUEUE DELAY - MIN (VEH-H) MAX	0.0
AV BREAKDOWNS PER DAY	0.00
AV QUEUE DELAY/DAY (VEH-H)	0.0
AV TOTAL DELAY/DAY (VEH-H)	0.0

*----- SITE ACCIDENT DELAYS -----*	
BREAKDOWN DURATION (MINS)	0
RANGE OF QUEUE DELAY - MIN (VEH-H) MAX	0
AV BREAKDOWNS PER DAY	0
AV QUEUE DELAY/DAY (VEH-H)	0
AV TOTAL DELAY/DAY (VEH-H)	0

AVERAGE ACCIDENT NUMBERS (PIA/DAY)	
MAIN ROUTE WITHOUT WORKS	0.0349
MAIN ROUTE WITH WORKS	0.0347
'DIVERSION'	0.0000

PIA: Personal Injury Accidents

ECONOMIC IMPACT ON ROAD USERS	
ROAD USER COSTS PER DAY	\$436
CONGESTED HOURS PER DAY*	0

\*Delays Exceeding User-Specified Maximum

**USH 41: USH 141 TO CTH B (BROWN AND OCONTO COUNTIES)  
NIGHTTIME CLOSURE  
NO DIVERSION ROUTE (MAX QUEUE METHOD)**

**OCTOBER**

Analyzed for 2009  
Construction Season

**GRAPHICAL REPRESENTATION OF TRAFFIC MODEL INPUT AND OUTPUT  
FRIDAY NORTHBOUND DIRECTION**

