

USH 41: CTH B TO CTH M (BROWN COUNTY) NIGHTTIME CLOSURE NO DIVERSION ROUTE (MAX QUEUE METHOD)	OCTOBER
	Analyzed for 2009 Construction Season

SUMMARY OF TRAFFIC MODEL OUTPUT

SUNDAY SOUTHBOUND DIRECTION

TIME OF DAY	FLOWS AND CAPACITY IN VEH/HR							AVERAGE SPEEDS IN MPH			
	MAIN ROUTE		SITE CAPA CITY	FLOW		AV.DEL PER VEH (MINS)	AVERAGE QUEUE (VEH)	MAIN ROUTE		SITE	
	DEMAND FLOW	PCT HEAVY		MAIN ROUTE	'DIVER TED'			WITHOUT WORK ZONE	WITH WORK ZONE		
MID-1 AM	137	0.0	1500	137	0	0.44	0	66.1	57.3	45.0	
1-2 AM	78	0.0	1500	78	0	0.43	0	66.3	57.4	45.2	
2-3 AM	62	0.0	1500	62	0	0.43	0	66.3	57.5	45.3	
3-4 AM	57	0.0	1500	57	0	0.43	0	66.3	57.5	45.3	
4-5 AM	120	0.0	1500	120	0	0.43	0	66.1	57.3	45.0	
5-6 AM	304	0.0	1500	304	0	0.45	0	65.8	56.8	44.3	
6-7 AM	299	0.0	1500	299	0	0.45	0	65.8	56.8	44.3	
7-8 AM	565	0.0	1500	565	0	0.48	0	65.3	56.0	43.3	
8-9 AM	1100	0.0	1499	1100	0	0.61	0	64.3	53.1	39.2	
9-10 AM	1855	0.0	OFF	1855	0	0.00	0	62.9	62.9	62.9	
10-11 AM	2130	0.0	OFF	2130	0	0.00	0	62.4	62.4	62.4	
11AM-NOON	1952	0.0	OFF	1952	0	0.00	0	62.7	62.7	62.7	
NOON-1PM	1744	0.0	OFF	1744	0	0.00	0	63.2	63.2	63.2	
1-2 PM	1835	0.0	OFF	1835	0	0.00	0	63.0	63.0	63.0	
2-3 PM	1832	0.0	OFF	1832	0	0.00	0	63.0	63.0	63.0	
3-4 PM	1456	0.0	OFF	1456	0	0.00	0	63.7	63.7	63.7	
4-5 PM	1620	0.0	OFF	1620	0	0.00	0	63.3	63.3	63.3	
5-6 PM	1551	0.0	OFF	1551	0	0.00	0	63.5	63.5	63.5	
6-7 PM	1259	0.0	OFF	1259	0	0.00	0	64.0	64.0	64.0	
7-8 PM	997	0.0	1500	997	0	0.52	0	64.5	54.7	41.7	
8-9 PM	664	0.0	1500	664	0	0.49	0	65.1	55.6	42.9	
9-10 PM	383	0.0	1500	383	0	0.46	0	65.7	56.5	44.0	
10-11 PM	234	0.0	1500	234	0	0.45	0	66.0	56.9	44.5	
11PM-MID	109	0.0	1500	109	0	0.43	0	66.2	57.3	45.0	

"OFF" INDICATES NO ROAD WORK (ALL LANES OPEN TO TRAFFIC)

----- SITE BREAKDOWN DELAYS -----	
BREAKDOWN DURATION (MINS)	0
RANGE OF QUEUE DELAY - MIN (VEH-H) MAX	0.0
AV BREAKDOWNS PER DAY	0.00
AV QUEUE DELAY/DAY (VEH-H)	0.0
AV TOTAL DELAY/DAY (VEH-H)	0.0

----- SITE ACCIDENT DELAYS -----	
BREAKDOWN DURATION (MINS)	0
RANGE OF QUEUE DELAY - MIN (VEH-H) MAX	0
AV BREAKDOWNS PER DAY	0
AV QUEUE DELAY/DAY (VEH-H)	0
AV TOTAL DELAY/DAY (VEH-H)	0

AVERAGE ACCIDENT NUMBERS (PIA/DAY)	
MAIN ROUTE WITHOUT WORKS	0.0110
MAIN ROUTE WITH WORKS	0.0107
'DIVERSION'	0.0000
PIA: Personal Injury Accidents	
IMPACTS ON ROAD USERS	
ROAD USER COSTS PER DAY	\$602
CONGESTED HOURS PER DAY*	0

*Delays Exceeding User-Specified Maximum

**USH 41: CTH B TO CTH M (BROWN COUNTY)
NIGHTTIME CLOSURE
NO DIVERSION ROUTE (MAX QUEUE METHOD)**

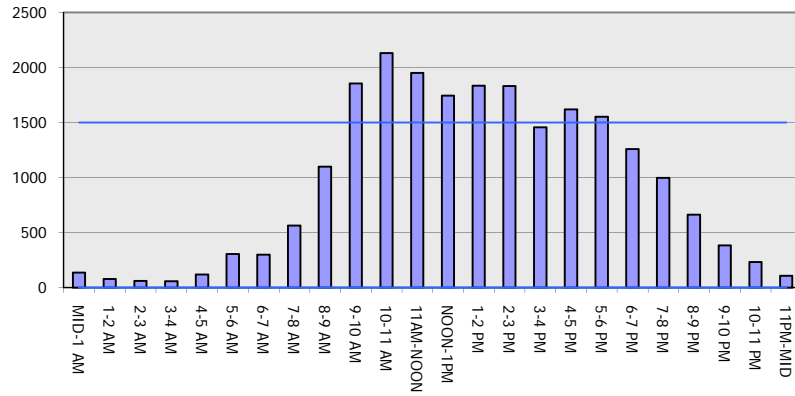
OCTOBER

Analyzed for 2009
Construction Season

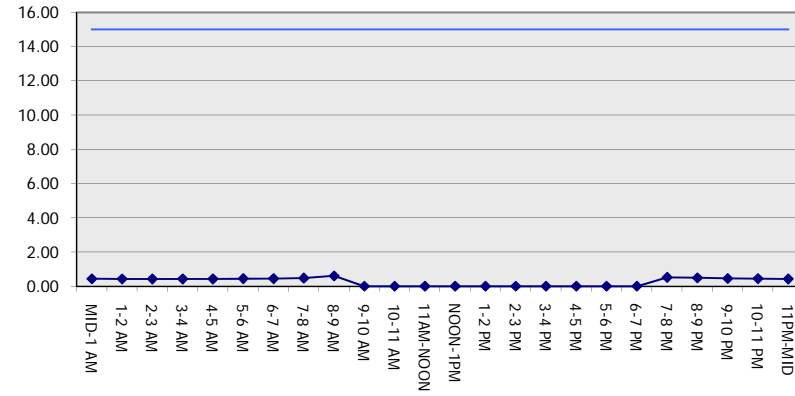
GRAPHICAL REPRESENTATION OF TRAFFIC MODEL INPUT AND OUTPUT

SUNDAY SOUTHBOUND DIRECTION

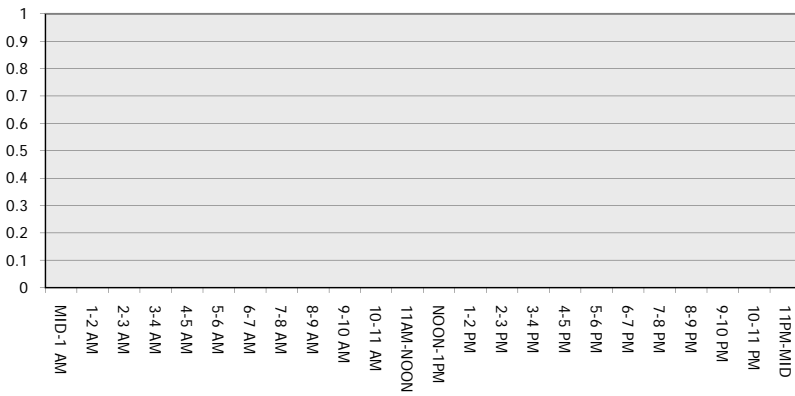
Main Route - Traffic Demand (Vehicles Per Hour)



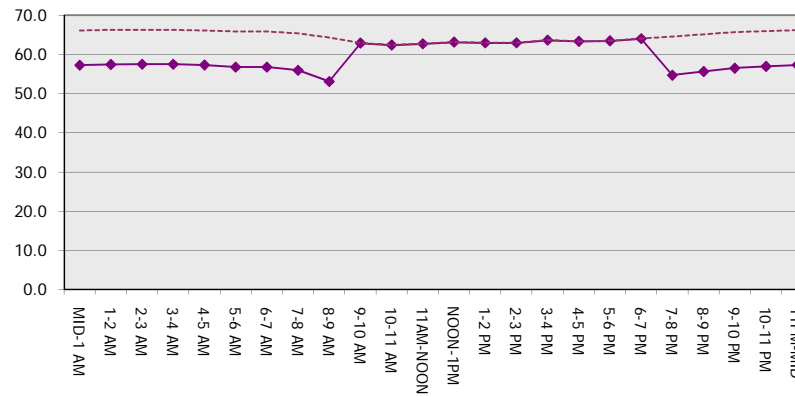
Main Route Average Delay Per Vehicle (Minutes)



Main Route - Average Queue Length (Vehicles)



Main Route - Average Speed (MPH)



USH 41: CTH B TO CTH M (BROWN COUNTY) NIGHTTIME CLOSURE NO DIVERSION ROUTE (MAX QUEUE METHOD)	OCTOBER
	Analyzed for 2009 Construction Season

SUMMARY OF TRAFFIC MODEL OUTPUT

SUNDAY NORTHBOUND DIRECTION

TIME OF DAY	FLOWS AND CAPACITY IN VEH/HR						AVERAGE SPEEDS IN MPH			
	MAIN ROUTE		SITE CAPA CITY	FLOW		AV.DEL PER VEH (MINS)	AVERAGE QUEUE (VEH)	MAIN ROUTE		SITE
	DEMAND FLOW	PCT HEAVY		MAIN ROUTE	'DIVER TED'			WITHOUT WORK ZONE	WITH WORK ZONE	
MID-1 AM	259	0.0	1500	259	0	0.45	0	65.9	56.9	44.5
1-2 AM	144	0.0	1500	144	0	0.44	0	66.1	57.3	44.9
2-3 AM	122	0.0	1500	122	0	0.43	0	66.1	57.3	45.0
3-4 AM	73	0.0	1500	73	0	0.43	0	66.3	57.4	45.2
4-5 AM	94	0.0	1500	94	0	0.43	0	66.2	57.4	45.1
5-6 AM	151	0.0	1500	151	0	0.44	0	66.1	57.2	44.9
6-7 AM	254	0.0	1500	254	0	0.45	0	65.9	56.9	44.5
7-8 AM	309	0.0	1500	309	0	0.45	0	65.8	56.7	44.3
8-9 AM	406	0.0	1500	406	0	0.46	0	65.6	56.4	43.8
9-10 AM	595	0.0	OFF	595	0	0.00	0	65.3	65.3	65.3
10-11 AM	818	0.0	OFF	818	0	0.00	0	64.8	64.8	64.8
11AM-NOON	1016	0.0	OFF	1016	0	0.00	0	64.5	64.5	64.5
NOON-1PM	979	0.0	OFF	979	0	0.00	0	64.6	64.6	64.6
1-2 PM	986	0.0	OFF	986	0	0.00	0	64.5	64.5	64.5
2-3 PM	1058	0.0	OFF	1058	0	0.00	0	64.4	64.4	64.4
3-4 PM	1312	0.0	OFF	1312	0	0.00	0	64.0	64.0	64.0
4-5 PM	1529	0.0	OFF	1529	0	0.00	0	63.5	63.5	63.5
5-6 PM	1316	0.0	OFF	1316	0	0.00	0	64.0	64.0	64.0
6-7 PM	1005	0.0	OFF	1005	0	0.00	0	64.5	64.5	64.5
7-8 PM	696	0.0	1500	696	0	0.49	0	65.1	55.6	42.8
8-9 PM	473	0.0	1500	473	0	0.47	0	65.5	56.2	43.6
9-10 PM	277	0.0	1500	277	0	0.45	0	65.9	56.8	44.4
10-11 PM	216	0.0	1500	216	0	0.44	0	66.0	57.0	44.6
11PM-MID	141	0.0	1500	141	0	0.44	0	66.1	57.3	44.9

"OFF" INDICATES NO ROAD WORK (ALL LANES OPEN TO TRAFFIC)

----- SITE BREAKDOWN DELAYS -----	
BREAKDOWN DURATION (MINS)	0
RANGE OF QUEUE DELAY - MIN (VEH-H) MAX	0.0
AV BREAKDOWNS PER DAY	0.00
AV QUEUE DELAY/DAY (VEH-H)	0.0
AV TOTAL DELAY/DAY (VEH-H)	0.0

----- SITE ACCIDENT DELAYS -----	
BREAKDOWN DURATION (MINS)	0
RANGE OF QUEUE DELAY - MIN (VEH-H) MAX	0
AV BREAKDOWNS PER DAY	0
AV QUEUE DELAY/DAY (VEH-H)	0
AV TOTAL DELAY/DAY (VEH-H)	0

AVERAGE ACCIDENT NUMBERS (PIA/DAY)	
MAIN ROUTE WITHOUT WORKS	0.0070
MAIN ROUTE WITH WORKS	0.0068
'DIVERSION'	0.0000

PIA: Personal Injury Accidents

ECONOMIC IMPACT ON ROAD USERS	
ROAD USER COSTS PER DAY	\$386
CONGESTED HOURS PER DAY*	0

*Delays Exceeding User-Specified Maximum

**USH 41: CTH B TO CTH M (BROWN COUNTY)
NIGHTTIME CLOSURE
NO DIVERSION ROUTE (MAX QUEUE METHOD)**

OCTOBER

Analyzed for 2009
Construction Season

GRAPHICAL REPRESENTATION OF TRAFFIC MODEL INPUT AND OUTPUT
SUNDAY NORTHBOUND DIRECTION

