

USH 41: CTH B TO CTH M (BROWN COUNTY) NIGHTTIME CLOSURE NO DIVERSION ROUTE (MAX QUEUE METHOD)	OCTOBER
	Analyzed for 2009 Construction Season

SUMMARY OF TRAFFIC MODEL OUTPUT

FRIDAY SOUTHBOUND DIRECTION

TIME OF DAY	FLOWS AND CAPACITY IN VEH/HR						AVERAGE SPEEDS IN MPH			
	MAIN ROUTE		SITE CAPA CITY	FLOW		AV.DEL PER VEH (MINS)	AVERAGE QUEUE (VEH)	MAIN ROUTE		SITE
	DEMAND FLOW	PCT HEAVY		MAIN ROUTE	'DIVER TED'			WITHOUT WORK ZONE	WITH WORK ZONE	
MID-1 AM	75	0.0	1500	75	0	0.43	0	66.3	57.4	45.2
1-2 AM	54	0.0	1500	54	0	0.43	0	66.3	57.5	45.3
2-3 AM	106	0.0	1500	106	0	0.43	0	66.2	57.4	45.1
3-4 AM	118	0.0	1500	118	0	0.43	0	66.1	57.3	45.0
4-5 AM	416	0.0	1500	416	0	0.46	0	65.6	56.4	43.8
5-6 AM	1160	0.0	OFF	1160	0	0.00	0	64.2	64.2	64.2
6-7 AM	2106	0.0	OFF	2106	0	0.00	0	62.5	62.5	62.5
7-8 AM	2458	0.0	OFF	2458	0	0.00	0	61.3	61.3	61.3
8-9 AM	1543	0.0	OFF	1543	0	0.00	0	63.5	63.5	63.5
9-10 AM	1335	0.0	OFF	1335	0	0.00	0	63.9	63.9	63.9
10-11 AM	1351	0.0	OFF	1351	0	0.00	0	63.8	63.8	63.8
11AM-NOON	1177	0.0	OFF	1177	0	0.00	0	64.2	64.2	64.2
NOON-1PM	1212	0.0	OFF	1212	0	0.00	0	64.1	64.1	64.1
1-2 PM	1297	0.0	OFF	1297	0	0.00	0	64.0	64.0	64.0
2-3 PM	1328	0.0	OFF	1328	0	0.00	0	63.9	63.9	63.9
3-4 PM	1372	0.0	OFF	1372	0	0.00	0	63.8	63.8	63.8
4-5 PM	1626	0.0	OFF	1626	0	0.00	0	63.3	63.3	63.3
5-6 PM	1560	0.0	OFF	1560	0	0.00	0	63.5	63.5	63.5
6-7 PM	1097	0.0	OFF	1097	0	0.00	0	64.3	64.3	64.3
7-8 PM	948	0.0	1500	948	0	0.51	0	64.6	54.8	41.9
8-9 PM	631	0.0	1500	631	0	0.48	0	65.2	55.8	43.0
9-10 PM	503	0.0	1500	503	0	0.47	0	65.5	56.1	43.5
10-11 PM	319	0.0	1500	319	0	0.45	0	65.8	56.7	44.2
11PM-MID	177	0.0	1500	177	0	0.44	0	66.1	57.1	44.8

"OFF" INDICATES NO ROAD WORK (ALL LANES OPEN TO TRAFFIC)

----- SITE BREAKDOWN DELAYS -----	
BREAKDOWN DURATION (MINS)	0
RANGE OF QUEUE DELAY - MIN (VEH-H) MAX	0.0
AV BREAKDOWNS PER DAY	0.00
AV QUEUE DELAY/DAY (VEH-H)	0.0
AV TOTAL DELAY/DAY (VEH-H)	0.0

----- SITE ACCIDENT DELAYS -----	
BREAKDOWN DURATION (MINS)	0
RANGE OF QUEUE DELAY - MIN (VEH-H) MAX	0
AV BREAKDOWNS PER DAY	0
AV QUEUE DELAY/DAY (VEH-H)	0
AV TOTAL DELAY/DAY (VEH-H)	0

AVERAGE ACCIDENT NUMBERS (PIA/DAY)	
MAIN ROUTE WITHOUT WORKS	0.0118
MAIN ROUTE WITH WORKS	0.0116
'DIVERSION'	0.0000
PIA: Personal Injury Accidents	
IMPACTS ON ROAD USERS	
ROAD USER COSTS PER DAY	\$363
CONGESTED HOURS PER DAY*	0

*Delays Exceeding User-Specified Maximum

**USH 41: CTH B TO CTH M (BROWN COUNTY)
NIGHTTIME CLOSURE
NO DIVERSION ROUTE (MAX QUEUE METHOD)**

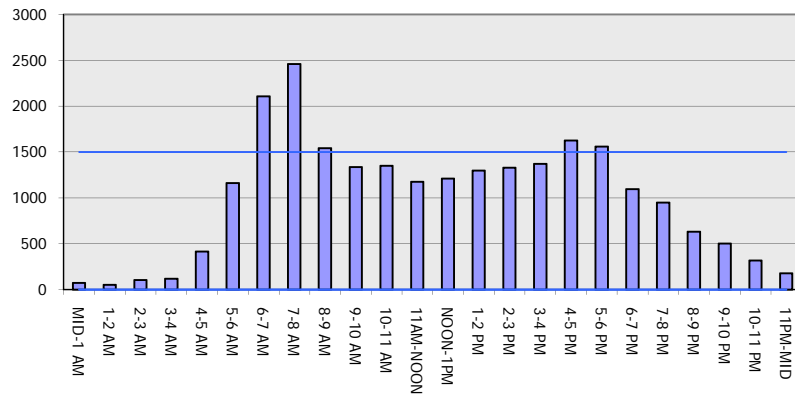
OCTOBER

Analyzed for 2009
Construction Season

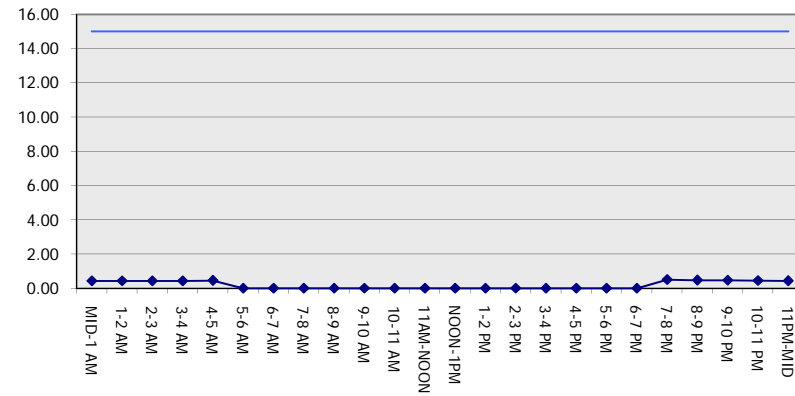
GRAPHICAL REPRESENTATION OF TRAFFIC MODEL INPUT AND OUTPUT

FRIDAY SOUTHBOUND DIRECTION

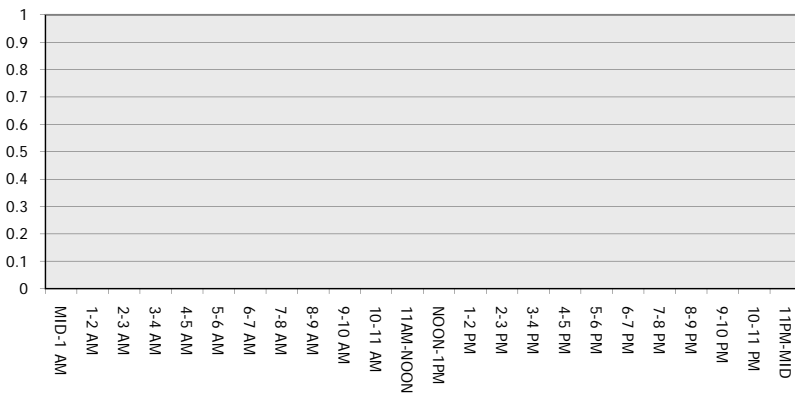
Main Route - Traffic Demand (Vehicles Per Hour)



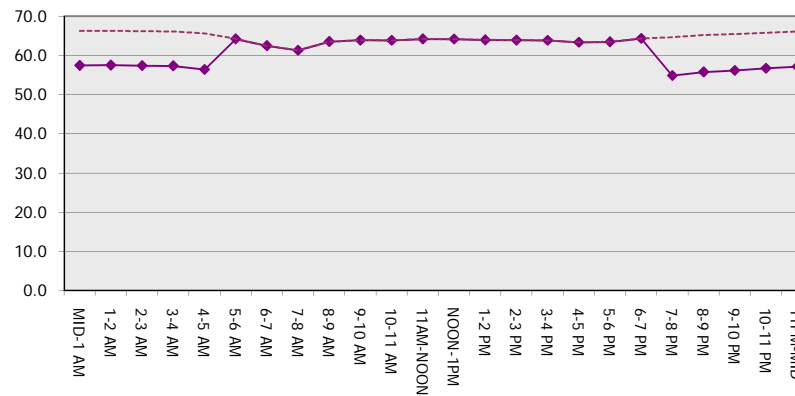
Main Route Average Delay Per Vehicle (Minutes)



Main Route - Average Queue Length (Vehicles)



Main Route - Average Speed (MPH)



USH 41: CTH B TO CTH M (BROWN COUNTY) NIGHTTIME CLOSURE NO DIVERSION ROUTE (MAX QUEUE METHOD)	OCTOBER
	Analyzed for 2009 Construction Season

SUMMARY OF TRAFFIC MODEL OUTPUT

FRIDAY NORTHBOUND DIRECTION

TIME OF DAY	FLOWS AND CAPACITY IN VEH/HR							AVERAGE SPEEDS IN MPH		
	MAIN ROUTE		SITE CAPA CITY	FLOW		AV.DEL PER VEH (MINS)	AVERAGE QUEUE (VEH)	MAIN ROUTE		SITE
	DEMAND FLOW	PCT HEAVY		MAIN ROUTE	'DIVER TED'			WITHOUT WORK ZONE	WITH WORK ZONE	
MID-1 AM	163	0.0	1500	163	0	0.44	0	66.1	57.2	44.8
1-2 AM	146	0.0	1500	146	0	0.44	0	66.1	57.3	44.9
2-3 AM	128	0.0	1500	128	0	0.43	0	66.1	57.3	45.0
3-4 AM	115	0.0	1500	115	0	0.43	0	66.2	57.3	45.0
4-5 AM	156	0.0	1500	156	0	0.44	0	66.1	57.2	44.8
5-6 AM	378	0.0	OFF	378	0	0.00	0	65.7	65.7	65.7
6-7 AM	719	0.0	OFF	719	0	0.00	0	65.0	65.0	65.0
7-8 AM	862	0.0	OFF	862	0	0.00	0	64.8	64.8	64.8
8-9 AM	890	0.0	OFF	890	0	0.00	0	64.7	64.7	64.7
9-10 AM	986	0.0	OFF	986	0	0.00	0	64.5	64.5	64.5
10-11 AM	1201	0.0	OFF	1201	0	0.00	0	64.1	64.1	64.1
11AM-NOON	1286	0.0	OFF	1286	0	0.00	0	64.0	64.0	64.0
NOON-1PM	1475	0.0	OFF	1475	0	0.00	0	63.7	63.7	63.7
1-2 PM	1831	0.0	OFF	1831	0	0.00	0	63.0	63.0	63.0
2-3 PM	2175	0.0	OFF	2175	0	0.00	0	62.3	62.3	62.3
3-4 PM	2753	0.0	OFF	2753	0	0.00	0	58.3	58.3	58.3
4-5 PM	3228	0.0	OFF	3228	0	0.00	0	53.4	53.4	53.4
5-6 PM	3253	0.0	OFF	3253	0	0.00	0	53.2	53.2	53.2
6-7 PM	2324	0.0	OFF	2324	0	0.00	0	62.0	62.0	62.0
7-8 PM	1580	0.0	1499	1580	0	3.71	74	63.5	28.0	30.8
8-9 PM	1207	0.0	1500	1207	0	1.05	14	64.1	47.1	37.7
9-10 PM	1049	0.0	1500	1049	0	0.52	0	64.5	54.5	41.5
10-11 PM	747	0.0	1500	747	0	0.49	0	65.0	55.4	42.6
11PM-MID	469	0.0	1500	469	0	0.47	0	65.5	56.3	43.6

"OFF" INDICATES NO ROAD WORK (ALL LANES OPEN TO TRAFFIC)

----- SITE BREAKDOWN DELAYS -----	
BREAKDOWN DURATION (MINS)	0
RANGE OF QUEUE DELAY - MIN (VEH-H) MAX	0.0
AV BREAKDOWNS PER DAY	0.00
AV QUEUE DELAY/DAY (VEH-H)	0.0
AV TOTAL DELAY/DAY (VEH-H)	0.0

----- SITE ACCIDENT DELAYS -----	
BREAKDOWN DURATION (MINS)	0
RANGE OF QUEUE DELAY - MIN (VEH-H) MAX	0
AV BREAKDOWNS PER DAY	0
AV QUEUE DELAY/DAY (VEH-H)	0
AV TOTAL DELAY/DAY (VEH-H)	0

AVERAGE ACCIDENT NUMBERS (PIA/DAY)	
MAIN ROUTE WITHOUT WORKS	0.0144
MAIN ROUTE WITH WORKS	0.0140
'DIVERSION'	0.0000

PIA: Personal Injury Accidents

ECONOMIC IMPACT ON ROAD USERS	
ROAD USER COSTS PER DAY	\$1,962
CONGESTED HOURS PER DAY*	0

*Delays Exceeding User-Specified Maximum

**USH 41: CTH B TO CTH M (BROWN COUNTY)
NIGHTTIME CLOSURE
NO DIVERSION ROUTE (MAX QUEUE METHOD)**

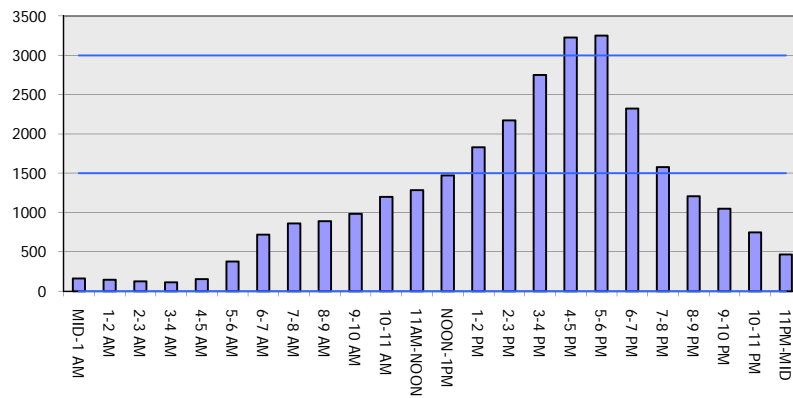
OCTOBER

Analyzed for 2009
Construction Season

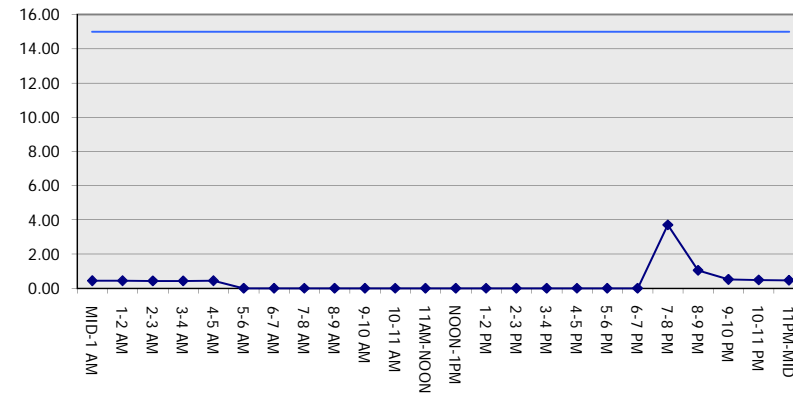
GRAPHICAL REPRESENTATION OF TRAFFIC MODEL INPUT AND OUTPUT

FRIDAY NORTHBOUND DIRECTION

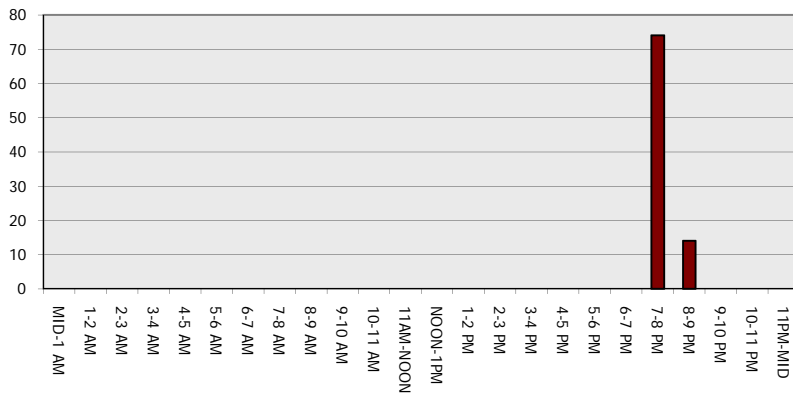
Main Route - Traffic Demand (Vehicles Per Hour)



Main Route Average Delay Per Vehicle (Minutes)



Main Route - Average Queue Length (Vehicles)



Main Route - Average Speed (MPH)

