

STH 172: STH 57 TO IH 43 (BROWN COUNTY) NIGHTTIME CLOSURE NO DIVERSION ROUTE (MAX QUEUE METHOD)	OCTOBER
	Analyzed for 2009 Construction Season

SUMMARY OF TRAFFIC MODEL OUTPUT

SUNDAY WESTBOUND DIRECTION

TIME OF DAY	FLOWS AND CAPACITY IN VEH/HR						AVERAGE SPEEDS IN MPH			
	MAIN ROUTE		SITE CAPA CITY	FLOW		AV.DEL PER VEH (MINS)	AVERAGE QUEUE (VEH)	MAIN ROUTE		SITE
	DEMAND FLOW	PCT HEAVY		MAIN ROUTE	'DIVER TED'			WITHOUT WORK ZONE	WITH WORK ZONE	
MID-1 AM	208	0.0	1500	208	0	0.44	0	66.0	57.9	44.6
1-2 AM	135	0.0	1500	135	0	0.44	0	66.1	58.1	45.0
2-3 AM	109	0.0	1500	109	0	0.43	0	66.2	58.2	45.0
3-4 AM	90	0.0	1500	90	0	0.43	0	66.2	58.3	45.1
4-5 AM	125	0.0	1500	125	0	0.43	0	66.1	58.2	45.0
5-6 AM	258	0.0	1500	258	0	0.45	0	65.9	57.8	44.5
6-7 AM	320	0.0	1500	320	0	0.45	0	65.8	57.6	44.2
7-8 AM	568	0.0	1500	568	0	0.48	0	65.3	56.9	43.2
8-9 AM	1054	0.0	1499	1054	0	0.58	0	64.4	54.7	40.1
9-10 AM	1810	0.0	OFF	1810	0	0.00	0	63.0	63.0	63.0
10-11 AM	2008	0.0	OFF	2008	0	0.00	0	62.7	62.7	62.7
11AM-NOON	1653	0.0	OFF	1653	0	0.00	0	63.3	63.3	63.3
NOON-1PM	1653	0.0	OFF	1653	0	0.00	0	63.3	63.3	63.3
1-2 PM	1527	0.0	OFF	1527	0	0.00	0	63.5	63.5	63.5
2-3 PM	1729	0.0	OFF	1729	0	0.00	0	63.2	63.2	63.2
3-4 PM	1764	0.0	OFF	1764	0	0.00	0	63.1	63.1	63.1
4-5 PM	1848	0.0	OFF	1848	0	0.00	0	63.0	63.0	63.0
5-6 PM	1615	0.0	OFF	1615	0	0.00	0	63.4	63.4	63.4
6-7 PM	1062	0.0	OFF	1062	0	0.00	0	64.4	64.4	64.4
7-8 PM	687	0.0	1500	687	0	0.49	0	65.1	56.5	42.8
8-9 PM	415	0.0	1500	415	0	0.46	0	65.6	57.3	43.8
9-10 PM	374	0.0	1500	374	0	0.46	0	65.7	57.4	44.0
10-11 PM	277	0.0	1500	277	0	0.45	0	65.9	57.8	44.4
11PM-MID	194	0.0	1500	194	0	0.44	0	66.0	58.0	44.7

"OFF" INDICATES NO ROAD WORK (ALL LANES OPEN TO TRAFFIC)

----- SITE BREAKDOWN DELAYS -----	
BREAKDOWN DURATION (MINS)	0
RANGE OF QUEUE DELAY - MIN (VEH-H) MAX	0.0
AV BREAKDOWNS PER DAY	0.00
AV QUEUE DELAY/DAY (VEH-H)	0.0
AV TOTAL DELAY/DAY (VEH-H)	0.0

----- SITE ACCIDENT DELAYS -----	
BREAKDOWN DURATION (MINS)	0
RANGE OF QUEUE DELAY - MIN (VEH-H) MAX	0
AV BREAKDOWNS PER DAY	0
AV QUEUE DELAY/DAY (VEH-H)	0
AV TOTAL DELAY/DAY (VEH-H)	0

AVERAGE ACCIDENT NUMBERS (PIA/DAY)	
MAIN ROUTE WITHOUT WORKS	0.0120
MAIN ROUTE WITH WORKS	0.0116
'DIVERSION'	0.0000
<small>PIA: Personal Injury Accidents</small>	
IMPACTS ON ROAD USERS	
ROAD USER COSTS PER DAY	\$507
CONGESTED HOURS PER DAY*	0

*Delays Exceeding User-Specified Maximum

**STH 172: STH 57 TO IH 43 (BROWN COUNTY)
NIGHTTIME CLOSURE
NO DIVERSION ROUTE (MAX QUEUE METHOD)**

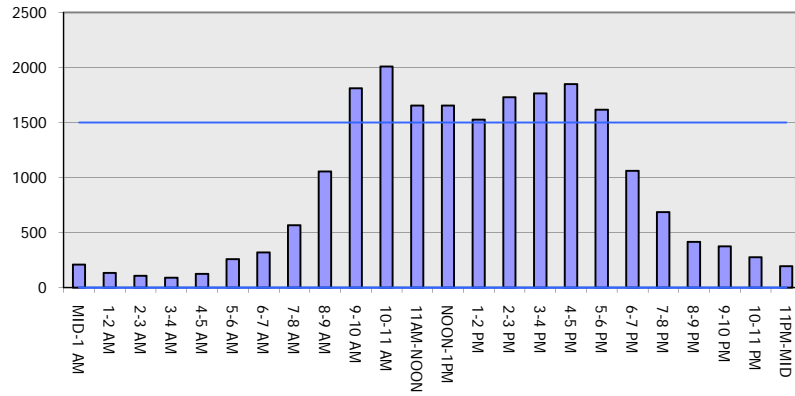
OCTOBER

Analyzed for 2009
Construction Season

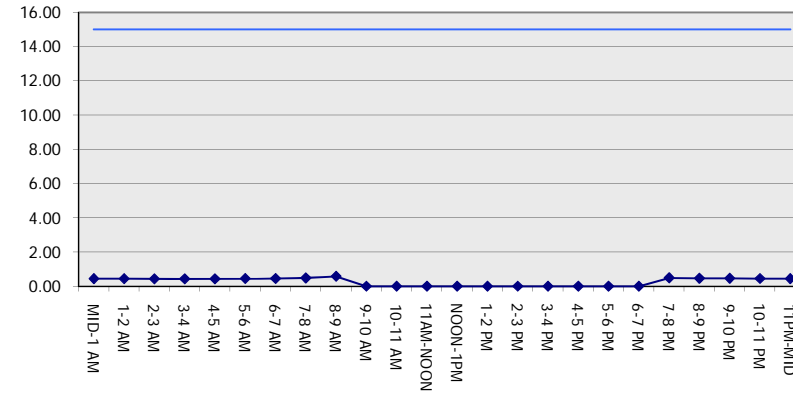
GRAPHICAL REPRESENTATION OF TRAFFIC MODEL INPUT AND OUTPUT

SUNDAY WESTBOUND DIRECTION

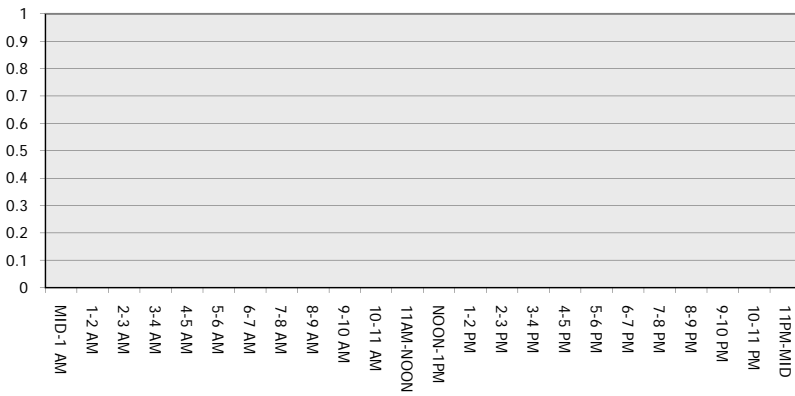
Main Route - Traffic Demand (Vehicles Per Hour)



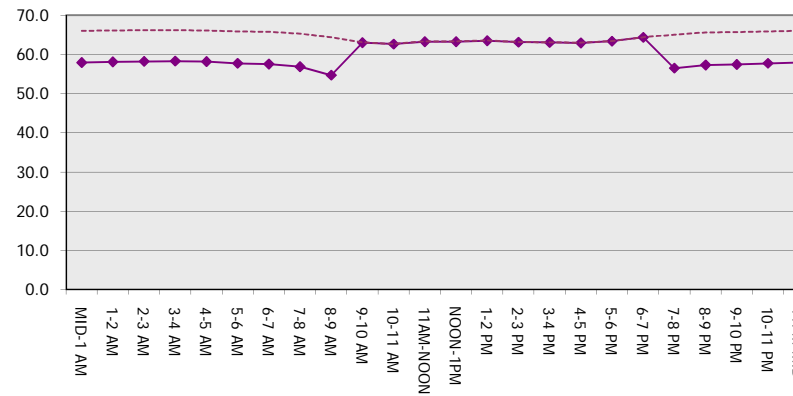
Main Route Average Delay Per Vehicle (Minutes)



Main Route - Average Queue Length (Vehicles)



Main Route - Average Speed (MPH)



STH 172: STH 57 TO IH 43 (BROWN COUNTY) NIGHTTIME CLOSURE NO DIVERSION ROUTE (MAX QUEUE METHOD)	OCTOBER
	Analyzed for 2009 Construction Season

SUMMARY OF TRAFFIC MODEL OUTPUT

SUNDAY EASTBOUND DIRECTION

TIME OF DAY	FLOWS AND CAPACITY IN VEH/HR							AVERAGE SPEEDS IN MPH		
	MAIN ROUTE		SITE CAPA CITY	FLOW		AV.DEL PER VEH (MINS)	AVERAGE QUEUE (VEH)	MAIN ROUTE		SITE
	DEMAND FLOW	PCT HEAVY		MAIN ROUTE	'DIVER TED'			WITHOUT WORK ZONE	WITH WORK ZONE	
MID-1 AM	475	0.0	1500	475	0	0.47	0	65.5	57.1	43.6
1-2 AM	236	0.0	1500	236	0	0.45	0	66.0	57.9	44.5
2-3 AM	224	0.0	1500	224	0	0.44	0	66.0	57.9	44.6
3-4 AM	171	0.0	1500	171	0	0.44	0	66.1	58.1	44.8
4-5 AM	126	0.0	1500	126	0	0.43	0	66.1	58.2	45.0
5-6 AM	188	0.0	1500	188	0	0.44	0	66.0	58.0	44.7
6-7 AM	378	0.0	1500	378	0	0.46	0	65.7	57.4	44.0
7-8 AM	451	0.0	1500	451	0	0.47	0	65.5	57.2	43.7
8-9 AM	1678	0.0	1499	1678	0	2.40	49	63.3	36.6	30.8
9-10 AM	1707	0.0	OFF	1707	0	0.12	6	63.2	61.0	61.0
10-11 AM	1742	0.0	OFF	1742	0	0.00	0	63.2	63.2	63.2
11AM-NOON	1664	0.0	OFF	1664	0	0.00	0	63.3	63.3	63.3
NOON-1PM	1449	0.0	OFF	1449	0	0.00	0	63.7	63.7	63.7
1-2 PM	1403	0.0	OFF	1403	0	0.00	0	63.8	63.8	63.8
2-3 PM	1518	0.0	OFF	1518	0	0.00	0	63.5	63.5	63.5
3-4 PM	2171	0.0	OFF	2171	0	0.00	0	62.3	62.3	62.3
4-5 PM	2469	0.0	OFF	2469	0	0.00	0	61.2	61.2	61.2
5-6 PM	2537	0.0	OFF	2537	0	0.00	0	60.5	60.5	60.5
6-7 PM	1618	0.0	OFF	1618	0	0.00	0	63.3	63.3	63.3
7-8 PM	1066	0.0	1500	1066	0	0.53	0	64.4	55.5	41.4
8-9 PM	772	0.0	1500	772	0	0.50	0	65.0	56.3	42.5
9-10 PM	588	0.0	1500	588	0	0.48	0	65.3	56.8	43.2
10-11 PM	621	0.0	1500	621	0	0.48	0	65.2	56.7	43.0
11PM-MID	1273	0.0	1500	1273	0	0.73	0	64.0	52.4	36.3

"OFF" INDICATES NO ROAD WORK (ALL LANES OPEN TO TRAFFIC)

----- SITE BREAKDOWN DELAYS -----	
BREAKDOWN DURATION (MINS)	0
RANGE OF QUEUE DELAY - MIN (VEH-H) MAX	0.0
AV BREAKDOWNS PER DAY	0.00
AV QUEUE DELAY/DAY (VEH-H)	0.0
AV TOTAL DELAY/DAY (VEH-H)	0.0

----- SITE ACCIDENT DELAYS -----	
BREAKDOWN DURATION (MINS)	0
RANGE OF QUEUE DELAY - MIN (VEH-H) MAX	0
AV BREAKDOWNS PER DAY	0
AV QUEUE DELAY/DAY (VEH-H)	0
AV TOTAL DELAY/DAY (VEH-H)	0

AVERAGE ACCIDENT NUMBERS (PIA/DAY)	
MAIN ROUTE WITHOUT WORKS	0.0148
MAIN ROUTE WITH WORKS	0.0142
'DIVERSION'	0.0000

PIA: Personal Injury Accidents

ECONOMIC IMPACT ON ROAD USERS	
ROAD USER COSTS PER DAY	\$1,671
CONGESTED HOURS PER DAY*	0

*Delays Exceeding User-Specified Maximum

**STH 172: STH 57 TO IH 43 (BROWN COUNTY)
NIGHTTIME CLOSURE
NO DIVERSION ROUTE (MAX QUEUE METHOD)**

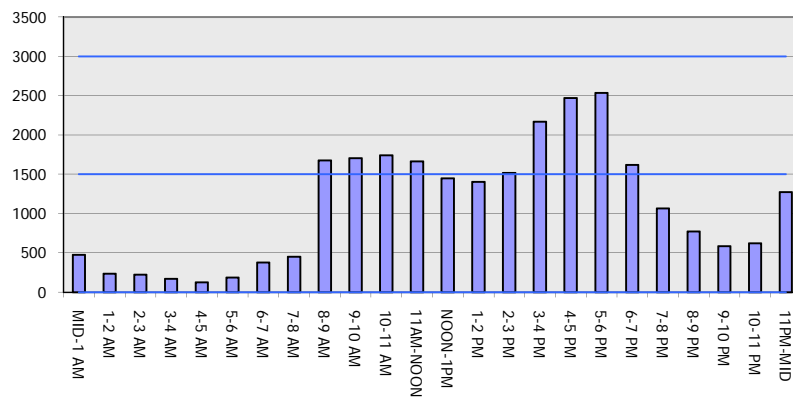
OCTOBER

Analyzed for 2009
Construction Season

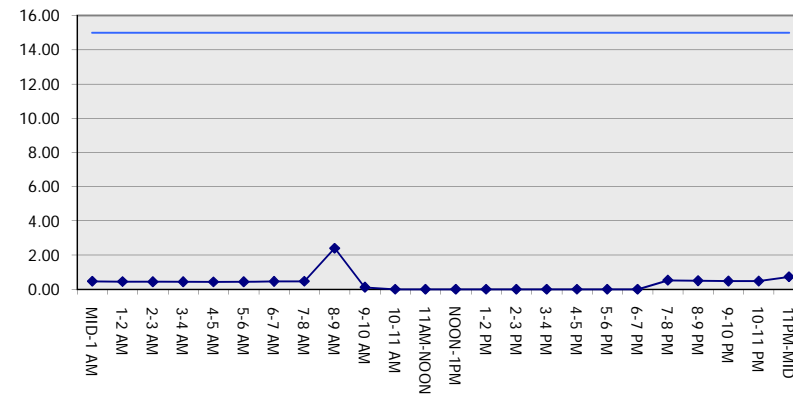
GRAPHICAL REPRESENTATION OF TRAFFIC MODEL INPUT AND OUTPUT

SUNDAY EASTBOUND DIRECTION

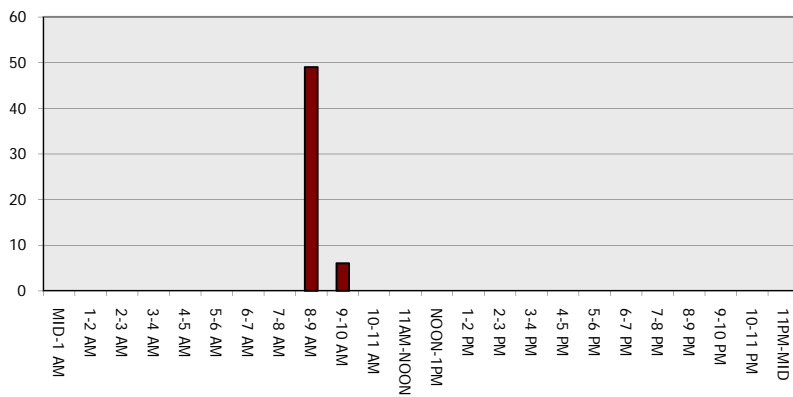
Main Route - Traffic Demand (Vehicles Per Hour)



Main Route Average Delay Per Vehicle (Minutes)



Main Route - Average Queue Length (Vehicles)



Main Route - Average Speed (MPH)

