

<b>STH 172: STH 57 TO IH 43 (BROWN COUNTY)</b> <b>NIGHTTIME CLOSURE</b> <b>NO DIVERSION ROUTE (MAX QUEUE METHOD)</b>	<b>OCTOBER</b>
	Analyzed for 2009 Construction Season

**SUMMARY OF TRAFFIC MODEL OUTPUT**

SATURDAY WESTBOUND DIRECTION

TIME OF DAY	FLOWS AND CAPACITY IN VEH/HR						AVERAGE SPEEDS IN MPH			
	MAIN ROUTE		SITE CAPA CITY	FLOW		AV.DEL PER VEH (MINS)	AVERAGE QUEUE (VEH)	MAIN ROUTE		SITE
	DEMAND FLOW	PCT HEAVY		MAIN ROUTE	'DIVER TED'			WITHOUT WORK ZONE	WITH WORK ZONE	
MID-1 AM	223	0.0	1500	223	0	0.44	0	66.0	57.9	44.6
1-2 AM	132	0.0	1500	132	0	0.44	0	66.1	58.2	45.0
2-3 AM	114	0.0	1500	114	0	0.43	0	66.2	58.2	45.0
3-4 AM	101	0.0	1500	101	0	0.43	0	66.2	58.2	45.1
4-5 AM	178	0.0	1500	178	0	0.44	0	66.1	58.0	44.8
5-6 AM	336	0.0	1500	336	0	0.46	0	65.8	57.6	44.2
6-7 AM	580	0.0	1500	580	0	0.48	0	65.3	56.8	43.2
7-8 AM	874	0.0	1500	874	0	0.51	0	64.8	56.0	42.1
8-9 AM	1341	0.0	OFF	1341	0	0.00	0	63.9	63.9	63.9
9-10 AM	1600	0.0	OFF	1600	0	0.00	0	63.4	63.4	63.4
10-11 AM	1732	0.0	OFF	1732	0	0.00	0	63.2	63.2	63.2
11AM-NOON	1882	0.0	OFF	1882	0	0.00	0	62.9	62.9	62.9
NOON-1PM	1902	0.0	OFF	1902	0	0.00	0	62.8	62.8	62.8
1-2 PM	1794	0.0	OFF	1794	0	0.00	0	63.0	63.0	63.0
2-3 PM	1743	0.0	OFF	1743	0	0.00	0	63.2	63.2	63.2
3-4 PM	1682	0.0	OFF	1682	0	0.00	0	63.3	63.3	63.3
4-5 PM	1674	0.0	OFF	1674	0	0.00	0	63.3	63.3	63.3
5-6 PM	1637	0.0	OFF	1637	0	0.00	0	63.3	63.3	63.3
6-7 PM	1498	0.0	1499	1498	0	1.55	14	63.6	43.3	31.2
7-8 PM	1124	0.0	1500	1124	0	0.54	0	64.3	55.2	41.0
8-9 PM	921	0.0	1500	921	0	0.51	0	64.6	55.9	42.0
9-10 PM	743	0.0	1500	743	0	0.49	0	65.0	56.4	42.6
10-11 PM	530	0.0	1500	530	0	0.47	0	65.4	57.0	43.4
11PM-MID	365	0.0	1500	365	0	0.46	0	65.7	57.4	44.0

"OFF" INDICATES NO ROAD WORK (ALL LANES OPEN TO TRAFFIC)

*----- SITE BREAKDOWN DELAYS -----*	
BREAKDOWN DURATION (MINS)	0
RANGE OF QUEUE DELAY - MIN (VEH-H) MAX	0.0
AV BREAKDOWNS PER DAY	0.00
AV QUEUE DELAY/DAY (VEH-H)	0.0
AV TOTAL DELAY/DAY (VEH-H)	0.0

*----- SITE ACCIDENT DELAYS -----*	
BREAKDOWN DURATION (MINS)	0
RANGE OF QUEUE DELAY - MIN (VEH-H) MAX	0
AV BREAKDOWNS PER DAY	0
AV QUEUE DELAY/DAY (VEH-H)	0
AV TOTAL DELAY/DAY (VEH-H)	0

AVERAGE ACCIDENT NUMBERS (PIA/DAY)	
MAIN ROUTE WITHOUT WORKS	0.0138
MAIN ROUTE WITH WORKS	0.0132
'DIVERSION'	0.0000
PIA: Personal Injury Accidents	
IMPACTS ON ROAD USERS	
ROAD USER COSTS PER DAY	\$1,319
CONGESTED HOURS PER DAY*	0

\*Delays Exceeding User-Specified Maximum

**STH 172: STH 57 TO IH 43 (BROWN COUNTY)  
NIGHTTIME CLOSURE  
NO DIVERSION ROUTE (MAX QUEUE METHOD)**

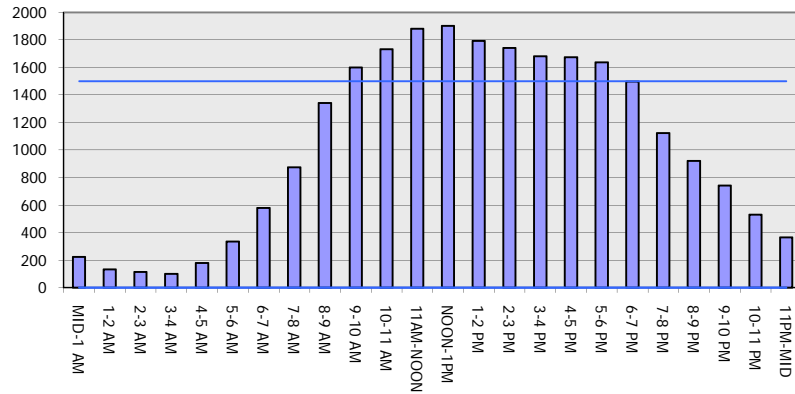
**OCTOBER**

Analyzed for 2009  
Construction Season

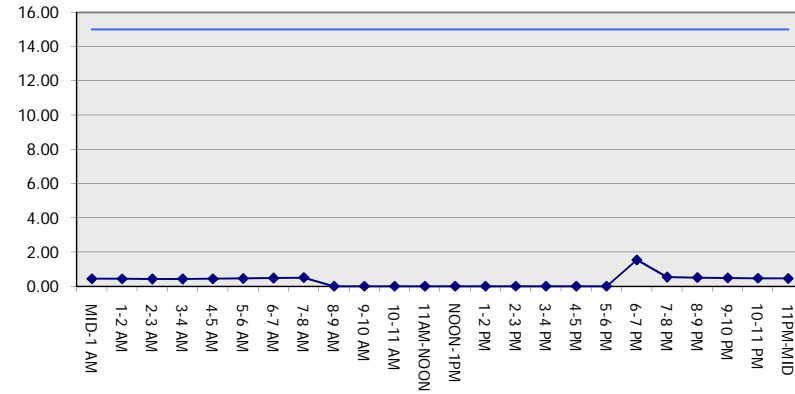
**GRAPHICAL REPRESENTATION OF TRAFFIC MODEL INPUT AND OUTPUT**

**SATURDAY WESTBOUND DIRECTION**

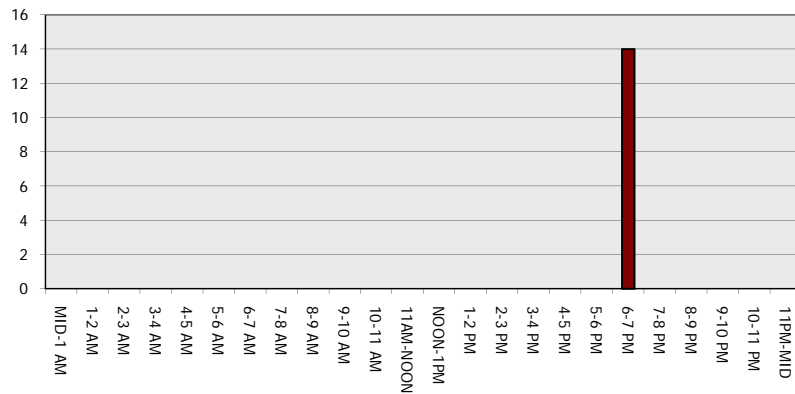
**Main Route - Traffic Demand (Vehicles Per Hour)**



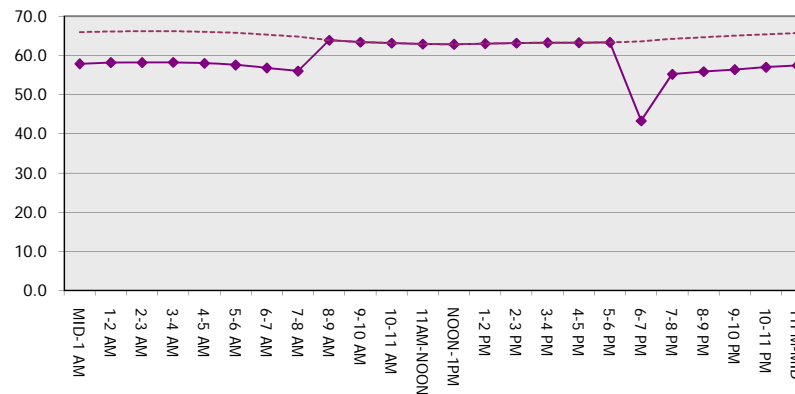
**Main Route Average Delay Per Vehicle (Minutes)**



**Main Route - Average Queue Length (Vehicles)**



**Main Route - Average Speed (MPH)**



<b>STH 172: STH 57 TO IH 43 (BROWN COUNTY)                  NIGHTTIME CLOSURE                  NO DIVERSION ROUTE (MAX QUEUE METHOD)</b>	<b>OCTOBER</b>
	Analyzed for 2009 Construction Season

**SUMMARY OF TRAFFIC MODEL OUTPUT**

SATURDAY EASTBOUND DIRECTION

TIME OF DAY	FLOWS AND CAPACITY IN VEH/HR							AVERAGE SPEEDS IN MPH		
	MAIN ROUTE		SITE CAPA CITY	FLOW		AV.DEL PER VEH (MINS)	AVERAGE QUEUE (VEH)	MAIN ROUTE		SITE
	DEMAND FLOW	PCT HEAVY		MAIN ROUTE	'DIVER TED'			WITHOUT WORK ZONE	WITH WORK ZONE	
MID-1 AM	364	0.0	1500	364	0	0.46	0	65.7	57.4	44.0
1-2 AM	197	0.0	1500	197	0	0.44	0	66.0	57.9	44.7
2-3 AM	188	0.0	1500	188	0	0.44	0	66.0	58.0	44.7
3-4 AM	259	0.0	1500	259	0	0.45	0	65.9	57.8	44.5
4-5 AM	256	0.0	1500	256	0	0.45	0	65.9	57.8	44.5
5-6 AM	311	0.0	1500	311	0	0.45	0	65.8	57.6	44.2
6-7 AM	370	0.0	1500	370	0	0.46	0	65.7	57.4	44.0
7-8 AM	523	0.0	1500	523	0	0.47	0	65.4	57.0	43.4
8-9 AM	869	0.0	OFF	869	0	0.00	0	64.8	64.8	64.8
9-10 AM	1028	0.0	OFF	1028	0	0.00	0	64.5	64.5	64.5
10-11 AM	1595	0.0	OFF	1595	0	0.00	0	63.4	63.4	63.4
11AM-NOON	1723	0.0	OFF	1723	0	0.00	0	63.2	63.2	63.2
NOON-1PM	1640	0.0	OFF	1640	0	0.00	0	63.3	63.3	63.3
1-2 PM	1576	0.0	OFF	1576	0	0.00	0	63.5	63.5	63.5
2-3 PM	1619	0.0	OFF	1619	0	0.00	0	63.3	63.3	63.3
3-4 PM	1608	0.0	OFF	1608	0	0.00	0	63.4	63.4	63.4
4-5 PM	1580	0.0	OFF	1580	0	0.00	0	63.5	63.5	63.5
5-6 PM	1549	0.0	OFF	1549	0	0.00	0	63.5	63.5	63.5
6-7 PM	1530	0.0	1499	1530	0	2.01	27	63.5	39.4	30.8
7-8 PM	1156	0.0	1500	1156	0	0.65	1	64.2	53.6	39.5
8-9 PM	993	0.0	1500	993	0	0.52	0	64.5	55.6	41.7
9-10 PM	963	0.0	1500	963	0	0.52	0	64.6	55.8	41.8
10-11 PM	697	0.0	1500	697	0	0.49	0	65.1	56.5	42.8
11PM-MID	637	0.0	1500	637	0	0.48	0	65.2	56.7	43.0

"OFF" INDICATES NO ROAD WORK (ALL LANES OPEN TO TRAFFIC)

*----- SITE BREAKDOWN DELAYS -----*	
BREAKDOWN DURATION (MINS)	0
RANGE OF QUEUE DELAY - MIN (VEH-H) MAX	0.0
AV BREAKDOWNS PER DAY	0.00
AV QUEUE DELAY/DAY (VEH-H)	0.0
AV TOTAL DELAY/DAY (VEH-H)	0.0

*----- SITE ACCIDENT DELAYS -----*	
BREAKDOWN DURATION (MINS)	0
RANGE OF QUEUE DELAY - MIN (VEH-H) MAX	0
AV BREAKDOWNS PER DAY	0
AV QUEUE DELAY/DAY (VEH-H)	0
AV TOTAL DELAY/DAY (VEH-H)	0

AVERAGE ACCIDENT NUMBERS (PIA/DAY)	
MAIN ROUTE WITHOUT WORKS	0.0129
MAIN ROUTE WITH WORKS	0.0124
'DIVERSION'	0.0000

PIA: Personal Injury Accidents

ECONOMIC IMPACT ON ROAD USERS	
ROAD USER COSTS PER DAY	\$1,620
CONGESTED HOURS PER DAY*	0

\*Delays Exceeding User-Specified Maximum

**STH 172: STH 57 TO IH 43 (BROWN COUNTY)  
NIGHTTIME CLOSURE  
NO DIVERSION ROUTE (MAX QUEUE METHOD)**

**OCTOBER**

Analyzed for 2009  
Construction Season

**GRAPHICAL REPRESENTATION OF TRAFFIC MODEL INPUT AND OUTPUT**  
**SATURDAY EASTBOUND DIRECTION**

