

STH 172: STH 57 TO IH 43 (BROWN COUNTY) NIGHTTIME CLOSURE NO DIVERSION ROUTE (MAX QUEUE METHOD)	OCTOBER
	Analyzed for 2009 Construction Season

SUMMARY OF TRAFFIC MODEL OUTPUT

MON-THUR WESTBOUND DIRECTION

TIME OF DAY	FLOWS AND CAPACITY IN VEH/HR						AVERAGE SPEEDS IN MPH			
	MAIN ROUTE		SITE CAPA CITY	FLOW		AV.DEL PER VEH (MINS)	AVERAGE QUEUE (VEH)	MAIN ROUTE		SITE
	DEMAND FLOW	PCT HEAVY		MAIN ROUTE	'DIVER TED'			WITHOUT WORK ZONE	WITH WORK ZONE	
MID-1 AM	109	0.0	1500	109	0	0.43	0	66.2	58.2	45.0
1-2 AM	71	0.0	1500	71	0	0.43	0	66.3	58.3	45.2
2-3 AM	72	0.0	1500	72	0	0.43	0	66.3	58.3	45.2
3-4 AM	108	0.0	1500	108	0	0.43	0	66.2	58.2	45.1
4-5 AM	352	0.0	1500	352	0	0.46	0	65.7	57.5	44.1
5-6 AM	1127	0.0	OFF	1127	0	0.00	0	64.3	64.3	64.3
6-7 AM	2309	0.0	OFF	2309	0	0.00	0	62.1	62.1	62.1
7-8 AM	3345	0.0	OFF	3345	0	0.00	0	52.2	52.2	52.2
8-9 AM	1981	0.0	OFF	1981	0	0.00	0	62.7	62.7	62.7
9-10 AM	1545	0.0	OFF	1545	0	0.00	0	63.5	63.5	63.5
10-11 AM	1563	0.0	OFF	1563	0	0.00	0	63.5	63.5	63.5
11AM-NOON	1607	0.0	OFF	1607	0	0.00	0	63.4	63.4	63.4
NOON-1PM	1727	0.0	OFF	1727	0	0.00	0	63.2	63.2	63.2
1-2 PM	1727	0.0	OFF	1727	0	0.00	0	63.2	63.2	63.2
2-3 PM	1851	0.0	OFF	1851	0	0.00	0	62.9	62.9	62.9
3-4 PM	2007	0.0	OFF	2007	0	0.00	0	62.7	62.7	62.7
4-5 PM	2214	0.0	OFF	2214	0	0.00	0	62.3	62.3	62.3
5-6 PM	2180	0.0	OFF	2180	0	0.00	0	62.3	62.3	62.3
6-7 PM	1439	0.0	OFF	1439	0	0.00	0	63.7	63.7	63.7
7-8 PM	883	0.0	1500	883	0	0.51	0	64.8	56.0	42.1
8-9 PM	671	0.0	1500	671	0	0.49	0	65.1	56.6	42.8
9-10 PM	530	0.0	1500	530	0	0.47	0	65.4	57.0	43.4
10-11 PM	367	0.0	1500	367	0	0.46	0	65.7	57.4	44.0
11PM-MID	208	0.0	1500	208	0	0.44	0	66.0	57.9	44.6

"OFF" INDICATES NO ROAD WORK (ALL LANES OPEN TO TRAFFIC)

----- SITE BREAKDOWN DELAYS -----	
BREAKDOWN DURATION (MINS)	0
RANGE OF QUEUE DELAY - MIN (VEH-H) MAX	0.0
AV BREAKDOWNS PER DAY	0.00
AV QUEUE DELAY/DAY (VEH-H)	0.0
AV TOTAL DELAY/DAY (VEH-H)	0.0

----- SITE ACCIDENT DELAYS -----	
BREAKDOWN DURATION (MINS)	0
RANGE OF QUEUE DELAY - MIN (VEH-H) MAX	0
AV BREAKDOWNS PER DAY	0
AV QUEUE DELAY/DAY (VEH-H)	0
AV TOTAL DELAY/DAY (VEH-H)	0

AVERAGE ACCIDENT NUMBERS (PIA/DAY)	
MAIN ROUTE WITHOUT WORKS	0.0167
MAIN ROUTE WITH WORKS	0.0165
'DIVERSION'	0.0000
<small>PIA: Personal Injury Accidents</small>	
IMPACTS ON ROAD USERS	
ROAD USER COSTS PER DAY	\$336
CONGESTED HOURS PER DAY*	0

*Delays Exceeding User-Specified Maximum

**STH 172: STH 57 TO IH 43 (BROWN COUNTY)
NIGHTTIME CLOSURE
NO DIVERSION ROUTE (MAX QUEUE METHOD)**

OCTOBER

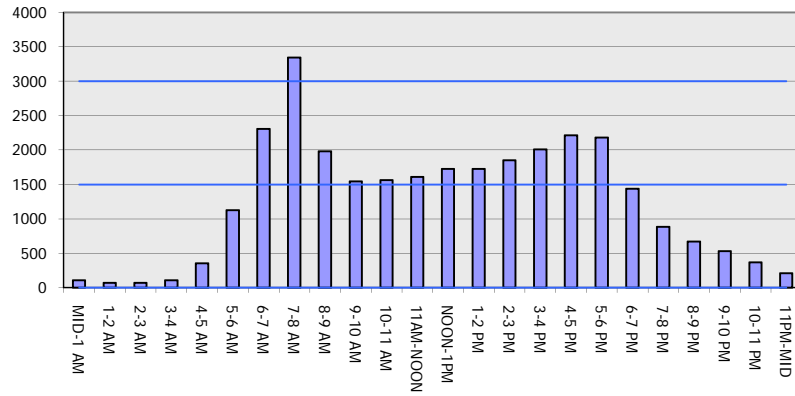
Analyzed for 2009
Construction Season

GRAPHICAL REPRESENTATION OF TRAFFIC MODEL INPUT AND OUTPUT

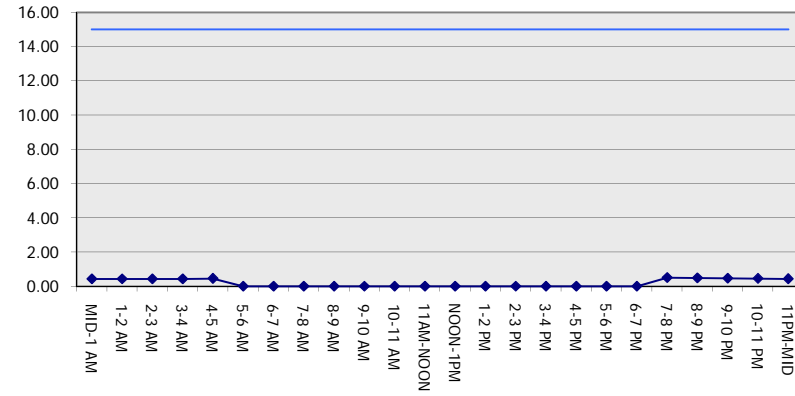
MON-THUR

WESTBOUND DIRECTION

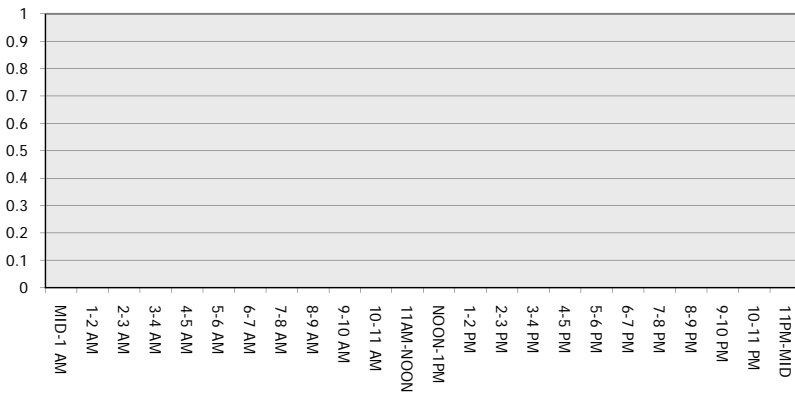
Main Route - Traffic Demand (Vehicles Per Hour)



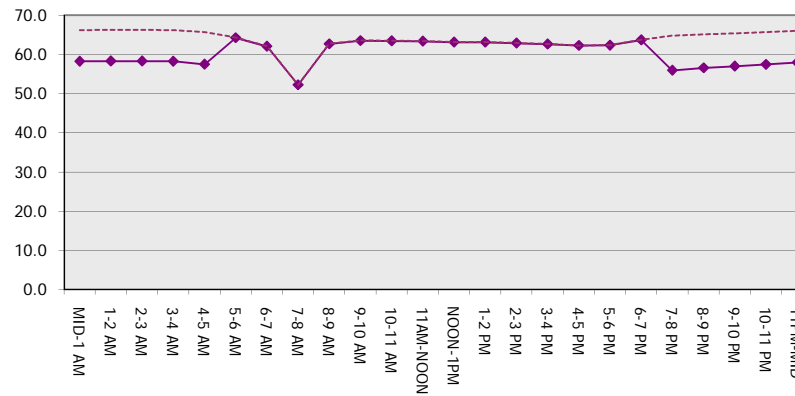
Main Route Average Delay Per Vehicle (Minutes)



Main Route - Average Queue Length (Vehicles)



Main Route - Average Speed (MPH)



STH 172: STH 57 TO IH 43 (BROWN COUNTY) NIGHTTIME CLOSURE NO DIVERSION ROUTE (MAX QUEUE METHOD)	OCTOBER
	Analyzed for 2009 Construction Season

SUMMARY OF TRAFFIC MODEL OUTPUT

MON-THUR EASTBOUND DIRECTION

TIME OF DAY	FLOWS AND CAPACITY IN VEH/HR						AVERAGE SPEEDS IN MPH			
	MAIN ROUTE		SITE CAPA CITY	FLOW		AV.DEL PER VEH (MINS)	AVERAGE QUEUE (VEH)	MAIN ROUTE		SITE
	DEMAND FLOW	PCT HEAVY		MAIN ROUTE	'DIVER TED'			WITHOUT WORK ZONE	WITH WORK ZONE	
MID-1 AM	179	0.0	1500	179	0	0.44	0	66.1	58.0	44.8
1-2 AM	113	0.0	1500	113	0	0.43	0	66.2	58.2	45.0
2-3 AM	111	0.0	1500	111	0	0.43	0	66.2	58.2	45.0
3-4 AM	122	0.0	1500	122	0	0.43	0	66.1	58.2	45.0
4-5 AM	210	0.0	1500	210	0	0.44	0	66.0	57.9	44.6
5-6 AM	538	0.0	OFF	538	0	0.00	0	65.4	65.4	65.4
6-7 AM	1141	0.0	OFF	1141	0	0.00	0	64.3	64.3	64.3
7-8 AM	1591	0.0	OFF	1591	0	0.00	0	63.4	63.4	63.4
8-9 AM	1470	0.0	OFF	1470	0	0.00	0	63.7	63.7	63.7
9-10 AM	1277	0.0	OFF	1277	0	0.00	0	64.0	64.0	64.0
10-11 AM	1297	0.0	OFF	1297	0	0.00	0	64.0	64.0	64.0
11AM-NOON	1445	0.0	OFF	1445	0	0.00	0	63.7	63.7	63.7
NOON-1PM	1618	0.0	OFF	1618	0	0.00	0	63.3	63.3	63.3
1-2 PM	1673	0.0	OFF	1673	0	0.00	0	63.3	63.3	63.3
2-3 PM	1924	0.0	OFF	1924	0	0.00	0	62.8	62.8	62.8
3-4 PM	2652	0.0	OFF	2652	0	0.00	0	59.3	59.3	59.3
4-5 PM	3265	0.0	OFF	3265	0	0.00	0	53.0	53.0	53.0
5-6 PM	2845	0.0	OFF	2845	0	0.00	0	57.4	57.4	57.4
6-7 PM	1745	0.0	OFF	1745	0	0.00	0	63.2	63.2	63.2
7-8 PM	1234	0.0	1500	1234	0	0.68	0	64.1	53.0	37.4
8-9 PM	1036	0.0	1500	1036	0	0.52	0	64.5	55.5	41.5
9-10 PM	969	0.0	1500	969	0	0.52	0	64.6	55.7	41.8
10-11 PM	578	0.0	1500	578	0	0.48	0	65.3	56.8	43.2
11PM-MID	400	0.0	1500	400	0	0.46	0	65.6	57.4	43.9

"OFF" INDICATES NO ROAD WORK (ALL LANES OPEN TO TRAFFIC)

----- SITE BREAKDOWN DELAYS -----	
BREAKDOWN DURATION (MINS)	0
RANGE OF QUEUE DELAY - MIN (VEH-H) MAX	0.0
AV BREAKDOWNS PER DAY	0.00
AV QUEUE DELAY/DAY (VEH-H)	0.0
AV TOTAL DELAY/DAY (VEH-H)	0.0

----- SITE ACCIDENT DELAYS -----	
BREAKDOWN DURATION (MINS)	0
RANGE OF QUEUE DELAY - MIN (VEH-H) MAX	0
AV BREAKDOWNS PER DAY	0
AV QUEUE DELAY/DAY (VEH-H)	0
AV TOTAL DELAY/DAY (VEH-H)	0

AVERAGE ACCIDENT NUMBERS (PIA/DAY)	
MAIN ROUTE WITHOUT WORKS	0.0164
MAIN ROUTE WITH WORKS	0.0161
'DIVERSION'	0.0000

PIA: Personal Injury Accidents

ECONOMIC IMPACT ON ROAD USERS	
ROAD USER COSTS PER DAY	\$558
CONGESTED HOURS PER DAY*	0

*Delays Exceeding User-Specified Maximum

**STH 172: STH 57 TO IH 43 (BROWN COUNTY)
NIGHTTIME CLOSURE
NO DIVERSION ROUTE (MAX QUEUE METHOD)**

OCTOBER

Analyzed for 2009
Construction Season

**GRAPHICAL REPRESENTATION OF TRAFFIC MODEL INPUT AND OUTPUT
MON-THUR EASTBOUND DIRECTION**

