

<b>STH 172: STH 57 TO IH 43 (BROWN COUNTY)</b> <b>NIGHTTIME CLOSURE</b> <b>NO DIVERSION ROUTE (MAX QUEUE METHOD)</b>	<b>AUGUST</b>
	Analyzed for 2009 Construction Season

**SUMMARY OF TRAFFIC MODEL OUTPUT**

SUNDAY WESTBOUND DIRECTION

TIME OF DAY	FLOWS AND CAPACITY IN VEH/HR						AVERAGE SPEEDS IN MPH			
	MAIN ROUTE		SITE CAPA CITY	FLOW		AV.DEL PER VEH (MINS)	AVERAGE QUEUE (VEH)	MAIN ROUTE		SITE
	DEMAND FLOW	PCT HEAVY		MAIN ROUTE	'DIVER TED'			WITHOUT WORK ZONE	WITH WORK ZONE	
MID-1 AM	239	0.0	1500	239	0	0.45	0	66.0	57.8	44.5
1-2 AM	119	0.0	1500	119	0	0.43	0	66.1	58.2	45.0
2-3 AM	97	0.0	1500	97	0	0.43	0	66.2	58.2	45.1
3-4 AM	78	0.0	1500	78	0	0.43	0	66.3	58.3	45.2
4-5 AM	112	0.0	1500	112	0	0.43	0	66.2	58.2	45.0
5-6 AM	241	0.0	1500	241	0	0.45	0	66.0	57.8	44.5
6-7 AM	303	0.0	1500	303	0	0.45	0	65.8	57.6	44.3
7-8 AM	409	0.0	1500	409	0	0.46	0	65.6	57.3	43.8
8-9 AM	637	0.0	1500	637	0	0.48	0	65.2	56.7	43.0
9-10 AM	958	0.0	OFF	958	0	0.00	0	64.6	64.6	64.6
10-11 AM	1423	0.0	OFF	1423	0	0.00	0	63.7	63.7	63.7
11AM-NOON	1524	0.0	OFF	1524	0	0.00	0	63.5	63.5	63.5
NOON-1PM	1811	0.0	OFF	1811	0	0.00	0	63.0	63.0	63.0
1-2 PM	1636	0.0	OFF	1636	0	0.00	0	63.3	63.3	63.3
2-3 PM	1532	0.0	OFF	1532	0	0.00	0	63.5	63.5	63.5
3-4 PM	1449	0.0	OFF	1449	0	0.00	0	63.7	63.7	63.7
4-5 PM	1464	0.0	OFF	1464	0	0.00	0	63.7	63.7	63.7
5-6 PM	1424	0.0	OFF	1424	0	0.00	0	63.7	63.7	63.7
6-7 PM	1096	0.0	OFF	1096	0	0.00	0	64.3	64.3	64.3
7-8 PM	901	0.0	1500	901	0	0.51	0	64.7	55.9	42.0
8-9 PM	818	0.0	1500	818	0	0.50	0	64.8	56.1	42.4
9-10 PM	463	0.0	1500	463	0	0.47	0	65.5	57.2	43.7
10-11 PM	399	0.0	1500	399	0	0.46	0	65.6	57.4	43.9
11PM-MID	218	0.0	1500	218	0	0.44	0	66.0	57.9	44.6

"OFF" INDICATES NO ROAD WORK (ALL LANES OPEN TO TRAFFIC)

*----- SITE BREAKDOWN DELAYS -----*	
BREAKDOWN DURATION (MINS)	0
RANGE OF QUEUE DELAY - MIN (VEH-H) MAX	0.0
AV BREAKDOWNS PER DAY	0.00
AV QUEUE DELAY/DAY (VEH-H)	0.0
AV TOTAL DELAY/DAY (VEH-H)	0.0

*----- SITE ACCIDENT DELAYS -----*	
BREAKDOWN DURATION (MINS)	0
RANGE OF QUEUE DELAY - MIN (VEH-H) MAX	0
AV BREAKDOWNS PER DAY	0
AV QUEUE DELAY/DAY (VEH-H)	0
AV TOTAL DELAY/DAY (VEH-H)	0

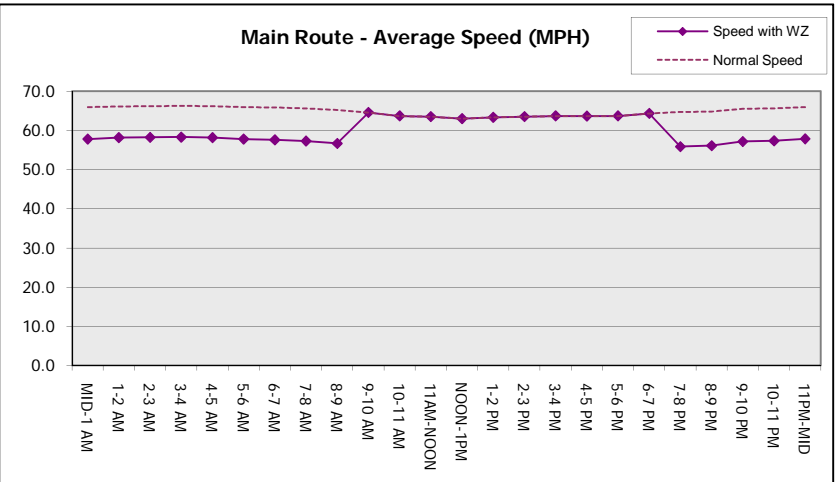
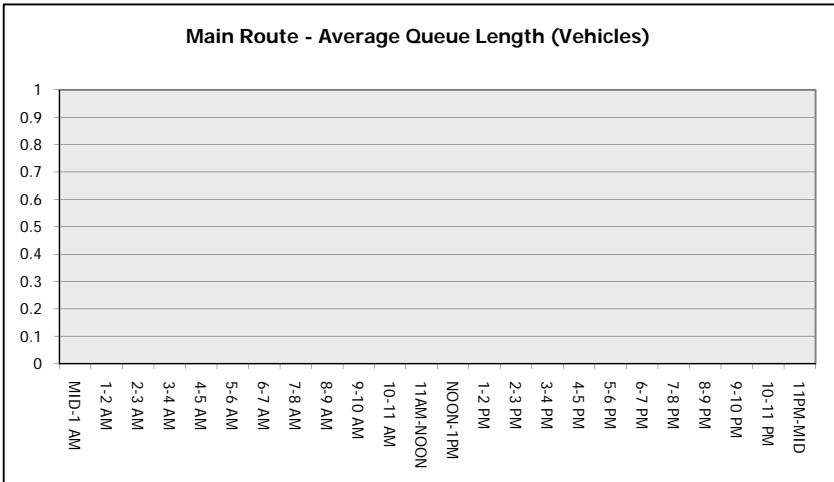
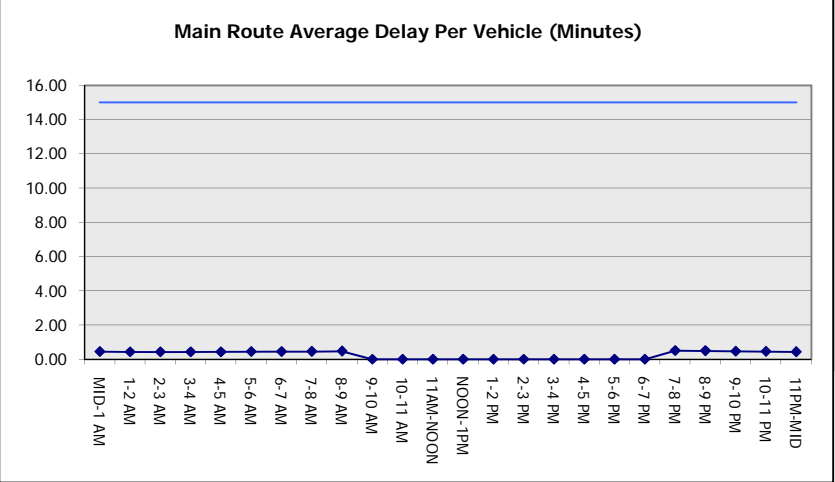
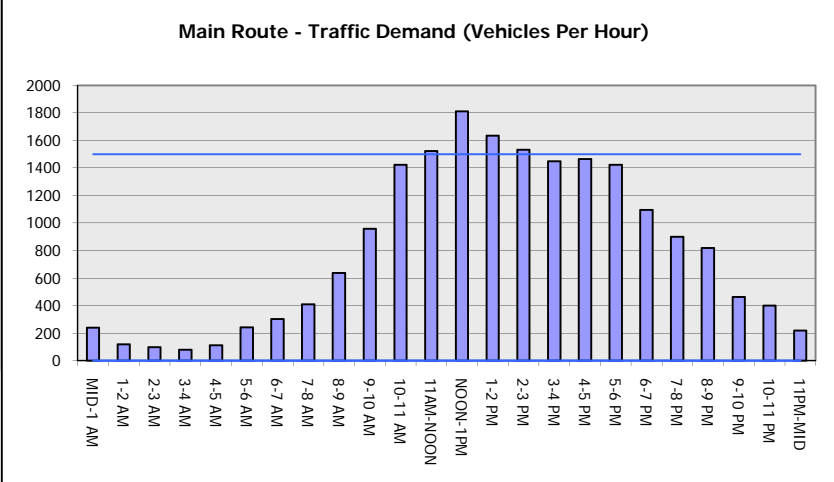
AVERAGE ACCIDENT NUMBERS (PIA/DAY)	
MAIN ROUTE WITHOUT WORKS	0.0108
MAIN ROUTE WITH WORKS	0.0104
'DIVERSION'	0.0000
<small>PIA: Personal Injury Accidents</small>	
IMPACTS ON ROAD USERS	
ROAD USER COSTS PER DAY	\$565
CONGESTED HOURS PER DAY*	0

\*Delays Exceeding User-Specified Maximum

**STH 172: STH 57 TO IH 43 (BROWN COUNTY)  
NIGHTTIME CLOSURE  
NO DIVERSION ROUTE (MAX QUEUE METHOD)**

**AUGUST**  
Analyzed for 2009  
Construction Season

**GRAPHICAL REPRESENTATION OF TRAFFIC MODEL INPUT AND OUTPUT**  
**SUNDAY WESTBOUND DIRECTION**



<b>STH 172: STH 57 TO IH 43 (BROWN COUNTY)                  NIGHTTIME CLOSURE                  NO DIVERSION ROUTE (MAX QUEUE METHOD)</b>	<b>AUGUST</b>
	Analyzed for 2009 Construction Season

**SUMMARY OF TRAFFIC MODEL OUTPUT**

SUNDAY EASTBOUND DIRECTION

TIME OF DAY	FLOWS AND CAPACITY IN VEH/HR						AVERAGE SPEEDS IN MPH			
	MAIN ROUTE		SITE CAPA CITY	FLOW		AV.DEL PER VEH (MINS)	AVERAGE QUEUE (VEH)	MAIN ROUTE		SITE
	DEMAND FLOW	PCT HEAVY		MAIN ROUTE	'DIVER TED'			WITHOUT WORK ZONE	WITH WORK ZONE	
MID-1 AM	328	0.0	1500	328	0	0.45	0	65.8	57.6	44.2
1-2 AM	189	0.0	1500	189	0	0.44	0	66.0	58.0	44.7
2-3 AM	181	0.0	1500	181	0	0.44	0	66.1	58.0	44.8
3-4 AM	137	0.0	1500	137	0	0.44	0	66.1	58.1	45.0
4-5 AM	92	0.0	1500	92	0	0.43	0	66.2	58.2	45.1
5-6 AM	149	0.0	1500	149	0	0.44	0	66.1	58.1	44.9
6-7 AM	239	0.0	1500	239	0	0.45	0	66.0	57.8	44.5
7-8 AM	402	0.0	1500	402	0	0.46	0	65.6	57.4	43.9
8-9 AM	561	0.0	1500	561	0	0.48	0	65.3	56.9	43.3
9-10 AM	813	0.0	OFF	813	0	0.00	0	64.9	64.9	64.9
10-11 AM	1219	0.0	OFF	1219	0	0.00	0	64.1	64.1	64.1
11AM-NOON	1460	0.0	OFF	1460	0	0.00	0	63.7	63.7	63.7
NOON-1PM	1734	0.0	OFF	1734	0	0.00	0	63.2	63.2	63.2
1-2 PM	1657	0.0	OFF	1657	0	0.00	0	63.3	63.3	63.3
2-3 PM	1704	0.0	OFF	1704	0	0.00	0	63.2	63.2	63.2
3-4 PM	1796	0.0	OFF	1796	0	0.00	0	63.0	63.0	63.0
4-5 PM	1782	0.0	OFF	1782	0	0.00	0	63.1	63.1	63.1
5-6 PM	1588	0.0	OFF	1588	0	0.00	0	63.4	63.4	63.4
6-7 PM	1499	0.0	OFF	1499	0	0.00	0	63.6	63.6	63.6
7-8 PM	1121	0.0	1500	1121	0	0.53	0	64.3	55.3	41.2
8-9 PM	956	0.0	1500	956	0	0.51	0	64.6	55.8	41.9
9-10 PM	756	0.0	1500	756	0	0.50	0	65.0	56.3	42.5
10-11 PM	464	0.0	1500	464	0	0.47	0	65.5	57.2	43.7
11PM-MID	348	0.0	1500	348	0	0.46	0	65.8	57.5	44.1

"OFF" INDICATES NO ROAD WORK (ALL LANES OPEN TO TRAFFIC)

*----- SITE BREAKDOWN DELAYS -----*	
BREAKDOWN DURATION (MINS)	0
RANGE OF QUEUE DELAY - MIN	0.0
(VEH-H) MAX	0.0
AV BREAKDOWNS PER DAY	0.00
AV QUEUE DELAY/DAY (VEH-H)	0.0
AV TOTAL DELAY/DAY (VEH-H)	0.0

*----- SITE ACCIDENT DELAYS -----*	
BREAKDOWN DURATION (MINS)	0
RANGE OF QUEUE DELAY - MIN	0
(VEH-H) MAX	0
AV BREAKDOWNS PER DAY	0
AV QUEUE DELAY/DAY (VEH-H)	0
AV TOTAL DELAY/DAY (VEH-H)	0

AVERAGE ACCIDENT NUMBERS (PIA/DAY)	
MAIN ROUTE WITHOUT WORKS	0.0118
MAIN ROUTE WITH WORKS	0.0114
'DIVERSION'	0.0000

PIA: Personal Injury Accidents

ECONOMIC IMPACT ON ROAD USERS	
ROAD USER COSTS PER DAY	\$681
CONGESTED HOURS PER DAY*	0

\*Delays Exceeding User-Specified Maximum

**STH 172: STH 57 TO IH 43 (BROWN COUNTY)  
NIGHTTIME CLOSURE  
NO DIVERSION ROUTE (MAX QUEUE METHOD)**

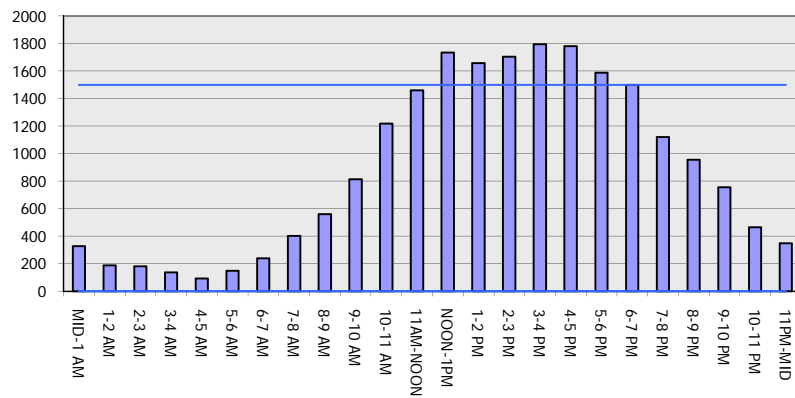
**AUGUST**

Analyzed for 2009  
Construction Season

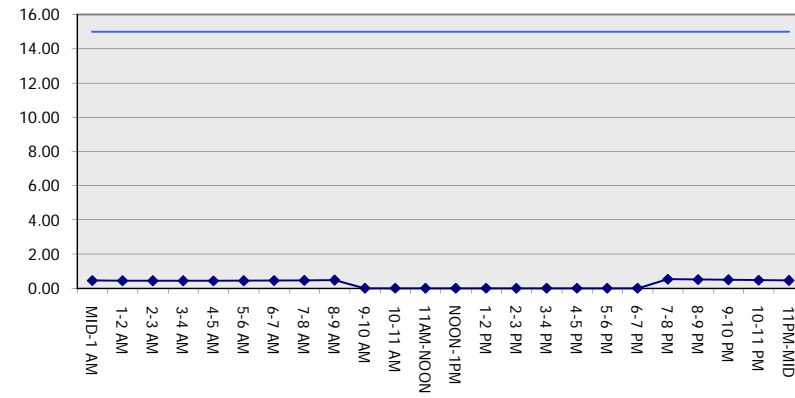
**GRAPHICAL REPRESENTATION OF TRAFFIC MODEL INPUT AND OUTPUT**

**SUNDAY EASTBOUND DIRECTION**

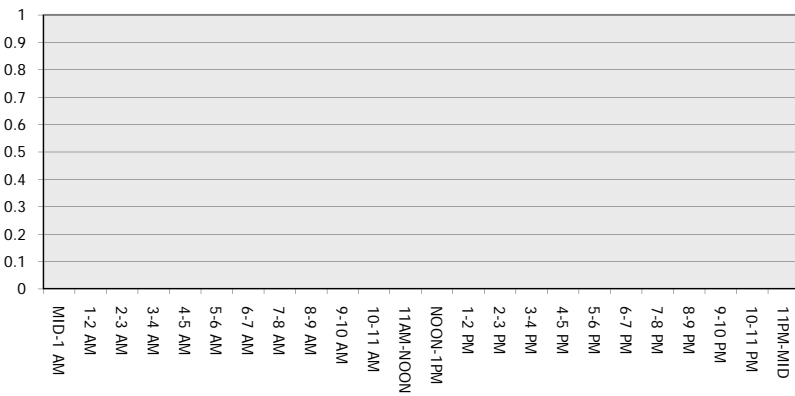
**Main Route - Traffic Demand (Vehicles Per Hour)**



**Main Route Average Delay Per Vehicle (Minutes)**



**Main Route - Average Queue Length (Vehicles)**



**Main Route - Average Speed (MPH)**

