

IH 43: STH 54/57 TO STH 172 (BROWN COUNTY) NIGHTTIME CLOSURE NO DIVERSION ROUTE (MAX QUEUE METHOD)	OCTOBER
	Analyzed for 2009 Construction Season

SUMMARY OF TRAFFIC MODEL OUTPUT

SUNDAY SOUTHBOUND DIRECTION

TIME OF DAY	FLOWS AND CAPACITY IN VEH/HR						AVERAGE SPEEDS IN MPH			
	MAIN ROUTE		SITE CAPA CITY	FLOW		AV.DEL PER VEH (MINS)	AVERAGE QUEUE (VEH)	MAIN ROUTE		SITE
	DEMAND FLOW	PCT HEAVY		MAIN ROUTE	'DIVER TED'			WITHOUT WORK ZONE	WITH WORK ZONE	
MID-1 AM	177	0.0	1500	177	0	0.44	0	66.1	60.3	44.8
1-2 AM	121	0.0	1500	121	0	0.43	0	66.1	60.5	45.0
2-3 AM	116	0.0	1500	116	0	0.43	0	66.2	60.5	45.0
3-4 AM	77	0.0	1500	77	0	0.43	0	66.3	60.6	45.2
4-5 AM	110	0.0	1500	110	0	0.43	0	66.2	60.5	45.0
5-6 AM	172	0.0	1500	172	0	0.44	0	66.1	60.4	44.8
6-7 AM	238	0.0	1500	238	0	0.45	0	66.0	60.2	44.5
7-8 AM	415	0.0	1500	415	0	0.46	0	65.6	59.7	43.8
8-9 AM	647	0.0	1500	647	0	0.49	0	65.2	59.1	43.0
9-10 AM	1107	0.0	OFF	1107	0	0.00	0	64.3	64.3	64.3
10-11 AM	1534	0.0	OFF	1534	0	0.00	0	63.5	63.5	63.5
11AM-NOON	1831	0.0	OFF	1831	0	0.00	0	63.0	63.0	63.0
NOON-1PM	1850	0.0	OFF	1850	0	0.00	0	63.0	63.0	63.0
1-2 PM	1878	0.0	OFF	1878	0	0.00	0	62.9	62.9	62.9
2-3 PM	1843	0.0	OFF	1843	0	0.00	0	63.0	63.0	63.0
3-4 PM	1885	0.0	OFF	1885	0	0.00	0	62.8	62.8	62.8
4-5 PM	1898	0.0	OFF	1898	0	0.00	0	62.8	62.8	62.8
5-6 PM	1672	0.0	OFF	1672	0	0.00	0	63.3	63.3	63.3
6-7 PM	1361	0.0	OFF	1361	0	0.00	0	63.8	63.8	63.8
7-8 PM	1044	0.0	1500	1044	0	0.52	0	64.5	58.1	41.5
8-9 PM	698	0.0	1500	698	0	0.49	0	65.1	58.9	42.8
9-10 PM	398	0.0	1500	398	0	0.46	0	65.6	59.7	43.9
10-11 PM	266	0.0	1500	266	0	0.45	0	65.9	60.1	44.4
11PM-MID	134	0.0	1500	134	0	0.44	0	66.1	60.4	45.0

"OFF" INDICATES NO ROAD WORK (ALL LANES OPEN TO TRAFFIC)

----- SITE BREAKDOWN DELAYS -----	
BREAKDOWN DURATION (MINS)	0
RANGE OF QUEUE DELAY - MIN (VEH-H) MAX	0.0
AV BREAKDOWNS PER DAY	0.00
AV QUEUE DELAY/DAY (VEH-H)	0.0
AV TOTAL DELAY/DAY (VEH-H)	0.0

----- SITE ACCIDENT DELAYS -----	
BREAKDOWN DURATION (MINS)	0
RANGE OF QUEUE DELAY - MIN (VEH-H) MAX	0
AV BREAKDOWNS PER DAY	0
AV QUEUE DELAY/DAY (VEH-H)	0
AV TOTAL DELAY/DAY (VEH-H)	0

AVERAGE ACCIDENT NUMBERS (PIA/DAY)	
MAIN ROUTE WITHOUT WORKS	0.0174
MAIN ROUTE WITH WORKS	0.0171
'DIVERSION'	0.0000
<small>PIA: Personal Injury Accidents</small>	
IMPACTS ON ROAD USERS	
ROAD USER COSTS PER DAY	\$519
CONGESTED HOURS PER DAY*	0

*Delays Exceeding User-Specified Maximum

**IH 43: STH 54/57 TO STH 172 (BROWN COUNTY)
NIGHTTIME CLOSURE
NO DIVERSION ROUTE (MAX QUEUE METHOD)**

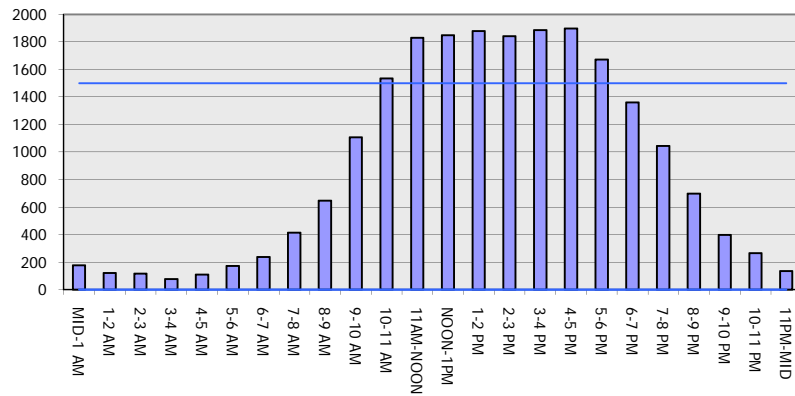
OCTOBER

Analyzed for 2009
Construction Season

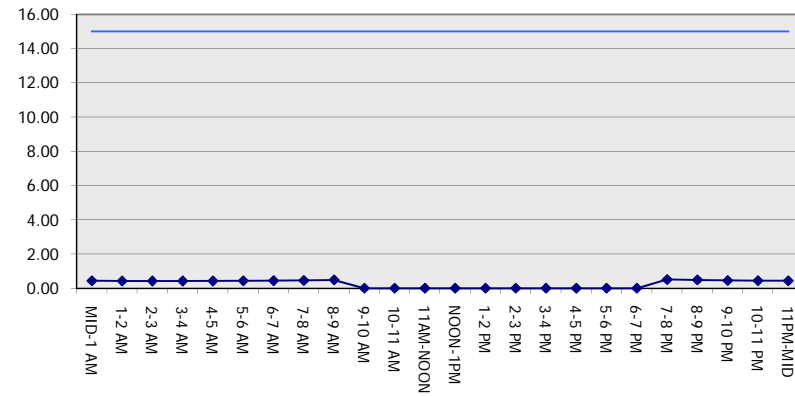
GRAPHICAL REPRESENTATION OF TRAFFIC MODEL INPUT AND OUTPUT

SUNDAY SOUTHBOUND DIRECTION

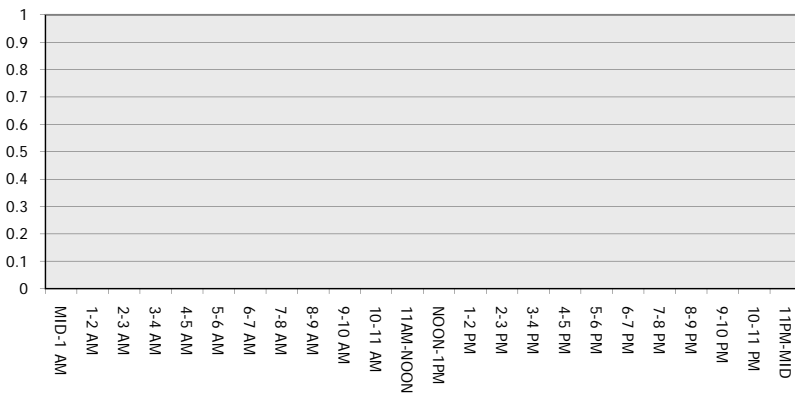
Main Route - Traffic Demand (Vehicles Per Hour)



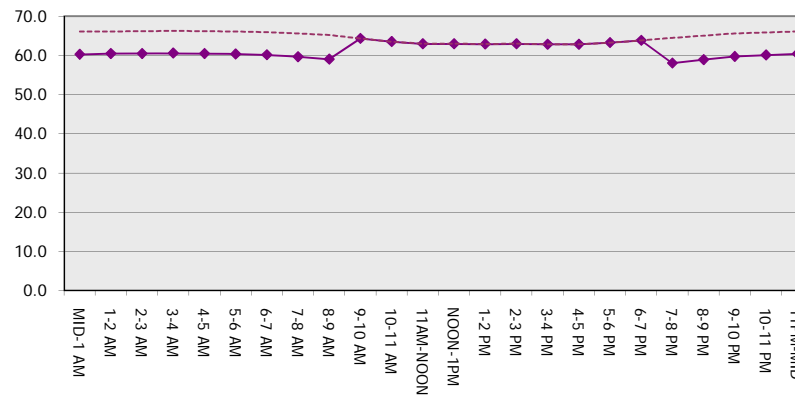
Main Route Average Delay Per Vehicle (Minutes)



Main Route - Average Queue Length (Vehicles)



Main Route - Average Speed (MPH)



IH 43: STH 54/57 TO STH 172 (BROWN COUNTY) NIGHTTIME CLOSURE NO DIVERSION ROUTE (MAX QUEUE METHOD)	OCTOBER
	Analyzed for 2009 Construction Season

SUMMARY OF TRAFFIC MODEL OUTPUT

SUNDAY NORTHBOUND DIRECTION

TIME OF DAY	FLOWS AND CAPACITY IN VEH/HR						AVERAGE SPEEDS IN MPH			
	MAIN ROUTE		SITE CAPA CITY	FLOW		AV.DEL PER VEH (MINS)	AVERAGE QUEUE (VEH)	MAIN ROUTE		SITE
	DEMAND FLOW	PCT HEAVY		MAIN ROUTE	'DIVER TED'			WITHOUT WORK ZONE	WITH WORK ZONE	
MID-1 AM	272	0.0	1500	272	0	0.45	0	65.9	60.1	44.4
1-2 AM	168	0.0	1500	168	0	0.44	0	66.1	60.4	44.8
2-3 AM	128	0.0	1500	128	0	0.43	0	66.1	60.5	45.0
3-4 AM	83	0.0	1500	83	0	0.43	0	66.3	60.6	45.1
4-5 AM	81	0.0	1500	81	0	0.43	0	66.3	60.6	45.1
5-6 AM	116	0.0	1500	116	0	0.43	0	66.2	60.5	45.0
6-7 AM	176	0.0	1500	176	0	0.44	0	66.1	60.4	44.8
7-8 AM	262	0.0	1500	262	0	0.45	0	65.9	60.1	44.5
8-9 AM	444	0.0	1500	444	0	0.47	0	65.6	59.6	43.7
9-10 AM	707	0.0	OFF	707	0	0.00	0	65.1	65.1	65.1
10-11 AM	1032	0.0	OFF	1032	0	0.00	0	64.5	64.5	64.5
11AM-NOON	1166	0.0	OFF	1166	0	0.00	0	64.2	64.2	64.2
NOON-1PM	1151	0.0	OFF	1151	0	0.00	0	64.2	64.2	64.2
1-2 PM	1105	0.0	OFF	1105	0	0.00	0	64.3	64.3	64.3
2-3 PM	1108	0.0	OFF	1108	0	0.00	0	64.3	64.3	64.3
3-4 PM	1170	0.0	OFF	1170	0	0.00	0	64.2	64.2	64.2
4-5 PM	1203	0.0	OFF	1203	0	0.00	0	64.1	64.1	64.1
5-6 PM	1142	0.0	OFF	1142	0	0.00	0	64.3	64.3	64.3
6-7 PM	1054	0.0	OFF	1054	0	0.00	0	64.4	64.4	64.4
7-8 PM	827	0.0	1500	827	0	0.50	0	64.8	58.6	42.3
8-9 PM	600	0.0	1500	600	0	0.48	0	65.3	59.2	43.2
9-10 PM	449	0.0	1500	449	0	0.47	0	65.6	59.6	43.7
10-11 PM	321	0.0	1500	321	0	0.45	0	65.8	59.9	44.2
11PM-MID	213	0.0	1500	213	0	0.44	0	66.0	60.2	44.6

"OFF" INDICATES NO ROAD WORK (ALL LANES OPEN TO TRAFFIC)

----- SITE BREAKDOWN DELAYS -----	
BREAKDOWN DURATION (MINS)	0
RANGE OF QUEUE DELAY - MIN (VEH-H) MAX	0.0
AV BREAKDOWNS PER DAY	0.00
AV QUEUE DELAY/DAY (VEH-H)	0.0
AV TOTAL DELAY/DAY (VEH-H)	0.0

----- SITE ACCIDENT DELAYS -----	
BREAKDOWN DURATION (MINS)	0
RANGE OF QUEUE DELAY - MIN (VEH-H) MAX	0
AV BREAKDOWNS PER DAY	0
AV QUEUE DELAY/DAY (VEH-H)	0
AV TOTAL DELAY/DAY (VEH-H)	0

AVERAGE ACCIDENT NUMBERS (PIA/DAY)	
MAIN ROUTE WITHOUT WORKS	0.0122
MAIN ROUTE WITH WORKS	0.0119
'DIVERSION'	0.0000

PIA: Personal Injury Accidents

ECONOMIC IMPACT ON ROAD USERS	
ROAD USER COSTS PER DAY	\$455
CONGESTED HOURS PER DAY*	0

*Delays Exceeding User-Specified Maximum

**IH 43: STH 54/57 TO STH 172 (BROWN COUNTY)
NIGHTTIME CLOSURE
NO DIVERSION ROUTE (MAX QUEUE METHOD)**

OCTOBER

Analyzed for 2009
Construction Season

GRAPHICAL REPRESENTATION OF TRAFFIC MODEL INPUT AND OUTPUT
SUNDAY NORTHBOUND DIRECTION

