

<b>IH 43: STH 54/57 TO STH 172 (BROWN COUNTY)                  NIGHTTIME CLOSURE                  NO DIVERSION ROUTE (MAX QUEUE METHOD)</b>	<b>OCTOBER</b>
	Analyzed for 2009 Construction Season

**SUMMARY OF TRAFFIC MODEL OUTPUT**

MON-THUR                  SOUTHBOUND DIRECTION

TIME OF DAY	FLOWS AND CAPACITY IN VEH/HR						AVERAGE SPEEDS IN MPH			
	MAIN ROUTE		SITE CAPA CITY	FLOW		AV.DEL PER VEH (MINS)	AVERAGE QUEUE (VEH)	MAIN ROUTE		SITE
	DEMAND FLOW	PCT HEAVY		MAIN ROUTE	'DIVER TED'			WITHOUT WORK ZONE	WITH WORK ZONE	
MID-1 AM	91	0.0	1500	91	0	0.43	0	66.2	60.5	45.1
1-2 AM	62	0.0	1500	62	0	0.43	0	66.3	60.7	45.3
2-3 AM	71	0.0	1500	71	0	0.43	0	66.3	60.6	45.2
3-4 AM	107	0.0	1500	107	0	0.43	0	66.2	60.5	45.1
4-5 AM	269	0.0	1500	269	0	0.45	0	65.9	60.1	44.4
5-6 AM	789	0.0	OFF	789	0	0.00	0	64.9	64.9	64.9
6-7 AM	1612	0.0	OFF	1612	0	0.00	0	63.4	63.4	63.4
7-8 AM	2202	0.0	OFF	2202	0	0.00	0	62.3	62.3	62.3
8-9 AM	1527	0.0	OFF	1527	0	0.00	0	63.5	63.5	63.5
9-10 AM	1251	0.0	OFF	1251	0	0.00	0	64.0	64.0	64.0
10-11 AM	1309	0.0	OFF	1309	0	0.00	0	64.0	64.0	64.0
11AM-NOON	1383	0.0	OFF	1383	0	0.00	0	63.8	63.8	63.8
NOON-1PM	1465	0.0	OFF	1465	0	0.00	0	63.7	63.7	63.7
1-2 PM	1440	0.0	OFF	1440	0	0.00	0	63.7	63.7	63.7
2-3 PM	1583	0.0	OFF	1583	0	0.00	0	63.5	63.5	63.5
3-4 PM	1797	0.0	OFF	1797	0	0.00	0	63.0	63.0	63.0
4-5 PM	2068	0.0	OFF	2068	0	0.00	0	62.5	62.5	62.5
5-6 PM	1898	0.0	OFF	1898	0	0.00	0	62.8	62.8	62.8
6-7 PM	1308	0.0	OFF	1308	0	0.00	0	64.0	64.0	64.0
7-8 PM	908	0.0	1500	908	0	0.51	0	64.7	58.4	42.0
8-9 PM	677	0.0	1500	677	0	0.49	0	65.1	59.0	42.8
9-10 PM	498	0.0	1500	498	0	0.47	0	65.5	59.5	43.5
10-11 PM	322	0.0	1500	322	0	0.45	0	65.8	59.9	44.2
11PM-MID	183	0.0	1500	183	0	0.44	0	66.1	60.3	44.8

"OFF" INDICATES NO ROAD WORK (ALL LANES OPEN TO TRAFFIC)

*----- SITE BREAKDOWN DELAYS -----*	
BREAKDOWN DURATION (MINS)	0
RANGE OF QUEUE DELAY - MIN (VEH-H) MAX	0.0
AV BREAKDOWNS PER DAY	0.00
AV QUEUE DELAY/DAY (VEH-H)	0.0
AV TOTAL DELAY/DAY (VEH-H)	0.0

*----- SITE ACCIDENT DELAYS -----*	
BREAKDOWN DURATION (MINS)	0
RANGE OF QUEUE DELAY - MIN (VEH-H) MAX	0
AV BREAKDOWNS PER DAY	0
AV QUEUE DELAY/DAY (VEH-H)	0
AV TOTAL DELAY/DAY (VEH-H)	0

AVERAGE ACCIDENT NUMBERS (PIA/DAY)	
MAIN ROUTE WITHOUT WORKS	0.0202
MAIN ROUTE WITH WORKS	0.0199
'DIVERSION'	0.0000
PIA: Personal Injury Accidents	
IMPACTS ON ROAD USERS	
ROAD USER COSTS PER DAY	\$316
CONGESTED HOURS PER DAY*	0

\*Delays Exceeding User-Specified Maximum

**IH 43: STH 54/57 TO STH 172 (BROWN COUNTY)  
NIGHTTIME CLOSURE  
NO DIVERSION ROUTE (MAX QUEUE METHOD)**

**OCTOBER**

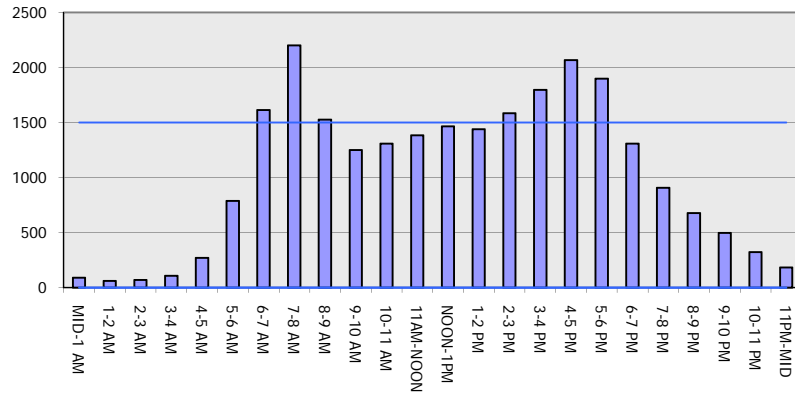
Analyzed for 2009  
Construction Season

**GRAPHICAL REPRESENTATION OF TRAFFIC MODEL INPUT AND OUTPUT**

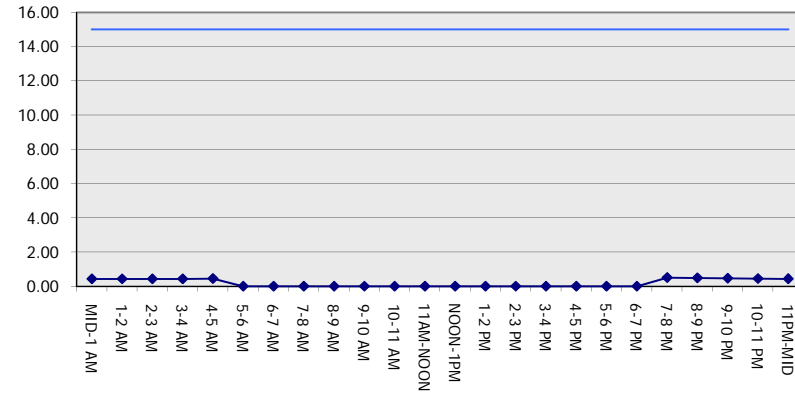
**MON-THUR**

**SOUTHBOUND DIRECTION**

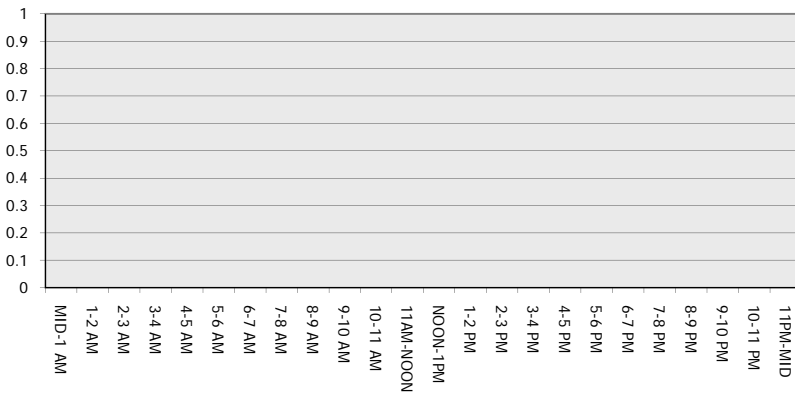
**Main Route - Traffic Demand (Vehicles Per Hour)**



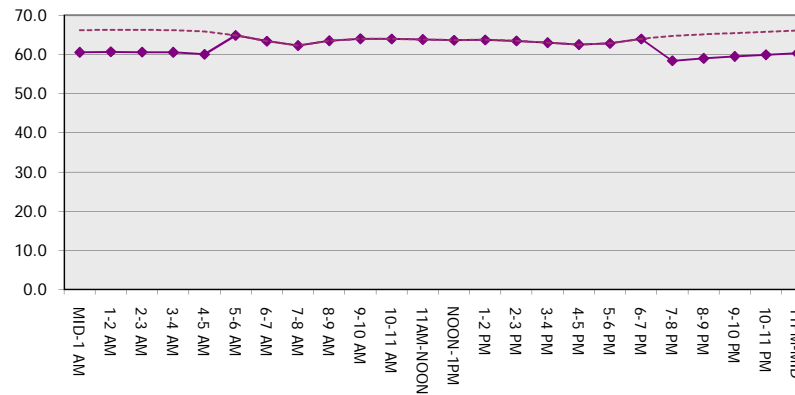
**Main Route Average Delay Per Vehicle (Minutes)**



**Main Route - Average Queue Length (Vehicles)**



**Main Route - Average Speed (MPH)**



<b>IH 43: STH 54/57 TO STH 172 (BROWN COUNTY)                  NIGHTTIME CLOSURE                  NO DIVERSION ROUTE (MAX QUEUE METHOD)</b>	<b>OCTOBER</b>
	Analyzed for 2009 Construction Season

**SUMMARY OF TRAFFIC MODEL OUTPUT**

MON-THUR                      NORTHBOUND DIRECTION

TIME OF DAY	FLOWS AND CAPACITY IN VEH/HR							AVERAGE SPEEDS IN MPH		
	MAIN ROUTE		SITE CAPA CITY	FLOW		AV.DEL PER VEH (MINS)	AVERAGE QUEUE (VEH)	MAIN ROUTE		SITE
	DEMAND FLOW	PCT HEAVY		MAIN ROUTE	'DIVER TED'			WITHOUT WORK ZONE	WITH WORK ZONE	
MID-1 AM	143	0.0	1500	143	0	0.44	0	66.1	60.4	44.9
1-2 AM	89	0.0	1500	89	0	0.43	0	66.2	60.5	45.1
2-3 AM	70	0.0	1500	70	0	0.43	0	66.3	60.6	45.2
3-4 AM	67	0.0	1500	67	0	0.43	0	66.3	60.6	45.2
4-5 AM	138	0.0	1500	138	0	0.44	0	66.1	60.4	45.0
5-6 AM	373	0.0	OFF	373	0	0.00	0	65.7	65.7	65.7
6-7 AM	880	0.0	OFF	880	0	0.00	0	64.8	64.8	64.8
7-8 AM	1477	0.0	OFF	1477	0	0.00	0	63.7	63.7	63.7
8-9 AM	1282	0.0	OFF	1282	0	0.00	0	64.0	64.0	64.0
9-10 AM	1084	0.0	OFF	1084	0	0.00	0	64.3	64.3	64.3
10-11 AM	1087	0.0	OFF	1087	0	0.00	0	64.3	64.3	64.3
11AM-NOON	1110	0.0	OFF	1110	0	0.00	0	64.3	64.3	64.3
NOON-1PM	1215	0.0	OFF	1215	0	0.00	0	64.1	64.1	64.1
1-2 PM	1279	0.0	OFF	1279	0	0.00	0	64.0	64.0	64.0
2-3 PM	1427	0.0	OFF	1427	0	0.00	0	63.7	63.7	63.7
3-4 PM	1876	0.0	OFF	1876	0	0.00	0	62.9	62.9	62.9
4-5 PM	2322	0.0	OFF	2322	0	0.00	0	62.0	62.0	62.0
5-6 PM	2242	0.0	OFF	2242	0	0.00	0	62.2	62.2	62.2
6-7 PM	1452	0.0	OFF	1452	0	0.00	0	63.7	63.7	63.7
7-8 PM	935	0.0	1500	935	0	0.51	0	64.6	58.3	41.9
8-9 PM	774	0.0	1500	774	0	0.50	0	65.0	58.7	42.5
9-10 PM	670	0.0	1500	670	0	0.49	0	65.1	59.0	42.8
10-11 PM	448	0.0	1500	448	0	0.47	0	65.6	59.6	43.7
11PM-MID	293	0.0	1500	293	0	0.45	0	65.8	60.0	44.3

"OFF" INDICATES NO ROAD WORK (ALL LANES OPEN TO TRAFFIC)

*----- SITE BREAKDOWN DELAYS -----*	
BREAKDOWN DURATION (MINS)	0
RANGE OF QUEUE DELAY - MIN (VEH-H) MAX	0.0
AV BREAKDOWNS PER DAY	0.00
AV QUEUE DELAY/DAY (VEH-H)	0.0
AV TOTAL DELAY/DAY (VEH-H)	0.0

*----- SITE ACCIDENT DELAYS -----*	
BREAKDOWN DURATION (MINS)	0
RANGE OF QUEUE DELAY - MIN (VEH-H) MAX	0
AV BREAKDOWNS PER DAY	0
AV QUEUE DELAY/DAY (VEH-H)	0
AV TOTAL DELAY/DAY (VEH-H)	0

AVERAGE ACCIDENT NUMBERS (PIA/DAY)	
MAIN ROUTE WITHOUT WORKS	0.0185
MAIN ROUTE WITH WORKS	0.0182
'DIVERSION'	0.0000

PIA: Personal Injury Accidents

ECONOMIC IMPACT ON ROAD USERS	
ROAD USER COSTS PER DAY	\$365
CONGESTED HOURS PER DAY*	0

\*Delays Exceeding User-Specified Maximum

**IH 43: STH 54/57 TO STH 172 (BROWN COUNTY)  
NIGHTTIME CLOSURE  
NO DIVERSION ROUTE (MAX QUEUE METHOD)**

**OCTOBER**

Analyzed for 2009  
Construction Season

**GRAPHICAL REPRESENTATION OF TRAFFIC MODEL INPUT AND OUTPUT  
MON-THUR NORTHBOUND DIRECTION**

