

IH 43: USH 41 TO STH 54/57 (BROWN COUNTY) NIGHTTIME CLOSURE NO DIVERSION ROUTE (MAX QUEUE METHOD)	AUGUST
	Analyzed for 2009 Construction Season

SUMMARY OF TRAFFIC MODEL OUTPUT

FRIDAY SOUTHBOUND DIRECTION

TIME OF DAY	FLOWS AND CAPACITY IN VEH/HR						AVERAGE SPEEDS IN MPH			
	MAIN ROUTE		SITE CAPA CITY	FLOW		AV.DEL PER VEH (MINS)	AVERAGE QUEUE (VEH)	MAIN ROUTE		SITE
	DEMAND FLOW	PCT HEAVY		MAIN ROUTE	'DIVER TED'			WITHOUT WORK ZONE	WITH WORK ZONE	
MID-1 AM	146	0.0	1500	146	0	0.44	0	66.1	61.1	44.9
1-2 AM	95	0.0	1500	95	0	0.43	0	66.2	61.3	45.1
2-3 AM	101	0.0	1500	101	0	0.43	0	66.2	61.2	45.1
3-4 AM	106	0.0	1500	106	0	0.43	0	66.2	61.2	45.1
4-5 AM	271	0.0	1500	271	0	0.45	0	65.9	60.8	44.4
5-6 AM	724	0.0	OFF	724	0	0.00	0	65.0	65.0	65.0
6-7 AM	1174	0.0	OFF	1174	0	0.00	0	64.2	64.2	64.2
7-8 AM	1466	0.0	OFF	1466	0	0.00	0	63.7	63.7	63.7
8-9 AM	1151	0.0	OFF	1151	0	0.00	0	64.2	64.2	64.2
9-10 AM	1072	0.0	OFF	1072	0	0.00	0	64.4	64.4	64.4
10-11 AM	1229	0.0	OFF	1229	0	0.00	0	64.1	64.1	64.1
11AM-NOON	1332	0.0	OFF	1332	0	0.00	0	63.9	63.9	63.9
NOON-1PM	1359	0.0	OFF	1359	0	0.00	0	63.8	63.8	63.8
1-2 PM	1482	0.0	OFF	1482	0	0.00	0	63.7	63.7	63.7
2-3 PM	1563	0.0	OFF	1563	0	0.00	0	63.5	63.5	63.5
3-4 PM	1690	0.0	OFF	1690	0	0.00	0	63.2	63.2	63.2
4-5 PM	1760	0.0	OFF	1760	0	0.00	0	63.1	63.1	63.1
5-6 PM	1730	0.0	OFF	1730	0	0.00	0	63.2	63.2	63.2
6-7 PM	1272	0.0	OFF	1272	0	0.00	0	64.0	64.0	64.0
7-8 PM	809	0.0	1500	809	0	0.50	0	64.9	59.4	42.4
8-9 PM	698	0.0	1500	698	0	0.49	0	65.1	59.7	42.8
9-10 PM	548	0.0	1500	548	0	0.48	0	65.4	60.1	43.3
10-11 PM	440	0.0	1500	440	0	0.47	0	65.6	60.4	43.7
11PM-MID	282	0.0	1500	282	0	0.45	0	65.9	60.8	44.3

"OFF" INDICATES NO ROAD WORK (ALL LANES OPEN TO TRAFFIC)

----- SITE BREAKDOWN DELAYS -----	
BREAKDOWN DURATION (MINS)	0
RANGE OF QUEUE DELAY - MIN (VEH-H) MAX	0.0
AV BREAKDOWNS PER DAY	0.00
AV QUEUE DELAY/DAY (VEH-H)	0.0
AV TOTAL DELAY/DAY (VEH-H)	0.0

----- SITE ACCIDENT DELAYS -----	
BREAKDOWN DURATION (MINS)	0
RANGE OF QUEUE DELAY - MIN (VEH-H) MAX	0
AV BREAKDOWNS PER DAY	0
AV QUEUE DELAY/DAY (VEH-H)	0
AV TOTAL DELAY/DAY (VEH-H)	0

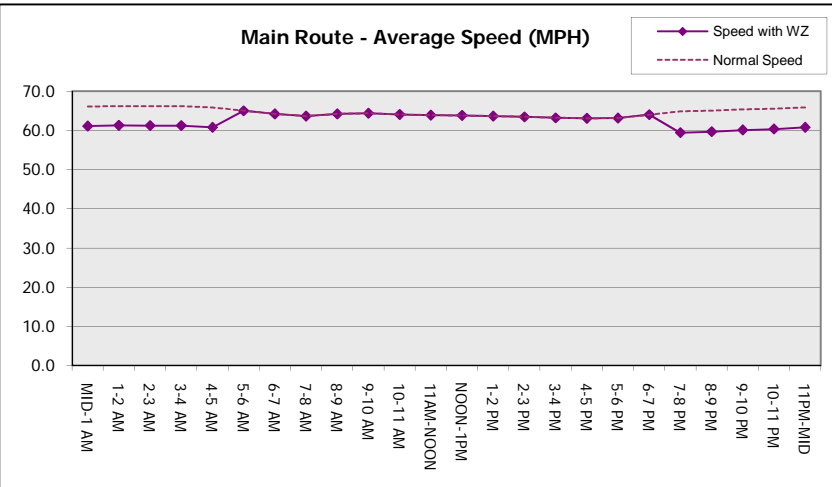
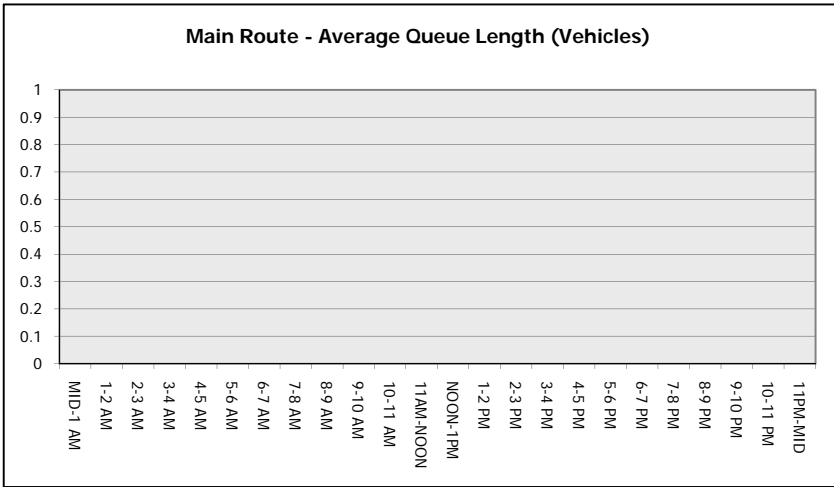
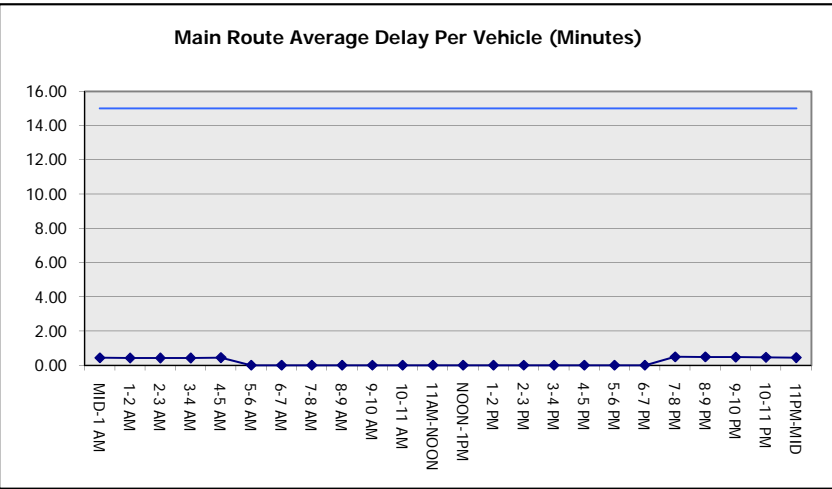
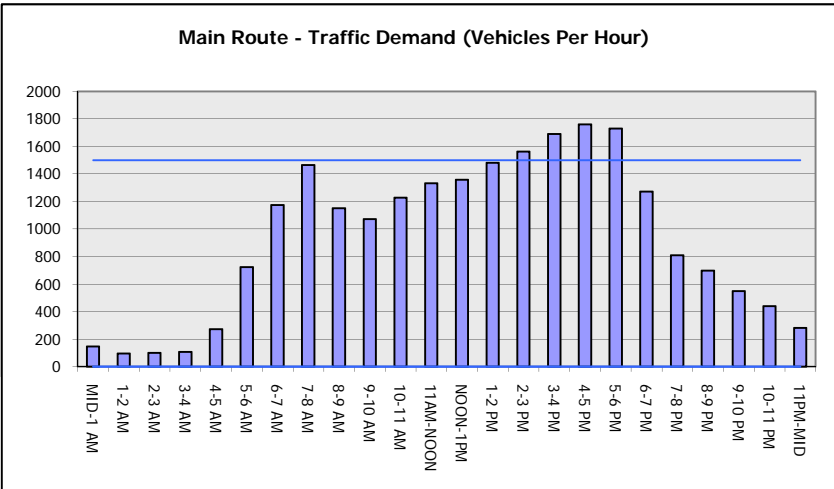
AVERAGE ACCIDENT NUMBERS (PIA/DAY)	
MAIN ROUTE WITHOUT WORKS	0.0211
MAIN ROUTE WITH WORKS	0.0209
'DIVERSION'	0.0000
<small>PIA: Personal Injury Accidents</small>	
IMPACTS ON ROAD USERS	
ROAD USER COSTS PER DAY	\$356
CONGESTED HOURS PER DAY*	0

*Delays Exceeding User-Specified Maximum

**IH 43: USH 41 TO STH 54/57 (BROWN COUNTY)
NIGHTTIME CLOSURE
NO DIVERSION ROUTE (MAX QUEUE METHOD)**

AUGUST
Analyzed for 2009
Construction Season

GRAPHICAL REPRESENTATION OF TRAFFIC MODEL INPUT AND OUTPUT
FRIDAY SOUTHBOUND DIRECTION



IH 43: USH 41 TO STH 54/57 (BROWN COUNTY) NIGHTTIME CLOSURE NO DIVERSION ROUTE (MAX QUEUE METHOD)	AUGUST
	Analyzed for 2009 Construction Season

SUMMARY OF TRAFFIC MODEL OUTPUT

FRIDAY NORTHBOUND DIRECTION

TIME OF DAY	FLOWS AND CAPACITY IN VEH/HR						AVERAGE SPEEDS IN MPH			
	MAIN ROUTE		SITE CAPA CITY	FLOW		AV.DEL PER VEH (MINS)	AVERAGE QUEUE (VEH)	MAIN ROUTE		SITE
	DEMAND FLOW	PCT HEAVY		MAIN ROUTE	'DIVER TED'			WITHOUT WORK ZONE	WITH WORK ZONE	
MID-1 AM	160	0.0	1500	160	0	0.44	0	66.1	61.1	44.8
1-2 AM	118	0.0	1500	118	0	0.43	0	66.1	61.2	45.0
2-3 AM	101	0.0	1500	101	0	0.43	0	66.2	61.2	45.1
3-4 AM	117	0.0	1500	117	0	0.43	0	66.1	61.2	45.0
4-5 AM	229	0.0	1500	229	0	0.44	0	66.0	60.9	44.6
5-6 AM	546	0.0	OFF	546	0	0.00	0	65.4	65.4	65.4
6-7 AM	1126	0.0	OFF	1126	0	0.00	0	64.3	64.3	64.3
7-8 AM	1369	0.0	OFF	1369	0	0.00	0	63.8	63.8	63.8
8-9 AM	1124	0.0	OFF	1124	0	0.00	0	64.3	64.3	64.3
9-10 AM	1119	0.0	OFF	1119	0	0.00	0	64.3	64.3	64.3
10-11 AM	1288	0.0	OFF	1288	0	0.00	0	64.0	64.0	64.0
11AM-NOON	1398	0.0	OFF	1398	0	0.00	0	63.8	63.8	63.8
NOON-1PM	1546	0.0	OFF	1546	0	0.00	0	63.5	63.5	63.5
1-2 PM	1702	0.0	OFF	1702	0	0.00	0	63.2	63.2	63.2
2-3 PM	1951	0.0	OFF	1951	0	0.00	0	62.7	62.7	62.7
3-4 PM	2145	0.0	OFF	2145	0	0.00	0	62.4	62.4	62.4
4-5 PM	2302	0.0	OFF	2302	0	0.00	0	62.1	62.1	62.1
5-6 PM	2174	0.0	OFF	2174	0	0.00	0	62.3	62.3	62.3
6-7 PM	1575	0.0	OFF	1575	0	0.00	0	63.5	63.5	63.5
7-8 PM	1121	0.0	1500	1121	0	0.53	0	64.3	58.6	41.2
8-9 PM	874	0.0	1500	874	0	0.51	0	64.8	59.2	42.1
9-10 PM	729	0.0	1500	729	0	0.49	0	65.0	59.6	42.7
10-11 PM	615	0.0	1500	615	0	0.48	0	65.3	59.9	43.1
11PM-MID	428	0.0	1500	428	0	0.46	0	65.6	60.4	43.8

"OFF" INDICATES NO ROAD WORK (ALL LANES OPEN TO TRAFFIC)

----- SITE BREAKDOWN DELAYS -----	
BREAKDOWN DURATION (MINS)	0
RANGE OF QUEUE DELAY - MIN (VEH-H) MAX	0.0
AV BREAKDOWNS PER DAY	0.00
AV QUEUE DELAY/DAY (VEH-H)	0.0
AV TOTAL DELAY/DAY (VEH-H)	0.0

----- SITE ACCIDENT DELAYS -----	
BREAKDOWN DURATION (MINS)	0
RANGE OF QUEUE DELAY - MIN (VEH-H) MAX	0
AV BREAKDOWNS PER DAY	0
AV QUEUE DELAY/DAY (VEH-H)	0
AV TOTAL DELAY/DAY (VEH-H)	0

AVERAGE ACCIDENT NUMBERS (PIA/DAY)	
MAIN ROUTE WITHOUT WORKS	0.0243
MAIN ROUTE WITH WORKS	0.0240
'DIVERSION'	0.0000

PIA: Personal Injury Accidents

ECONOMIC IMPACT ON ROAD USERS	
ROAD USER COSTS PER DAY	\$473
CONGESTED HOURS PER DAY*	0

*Delays Exceeding User-Specified Maximum

**IH 43: USH 41 TO STH 54/57 (BROWN COUNTY)
NIGHTTIME CLOSURE
NO DIVERSION ROUTE (MAX QUEUE METHOD)**

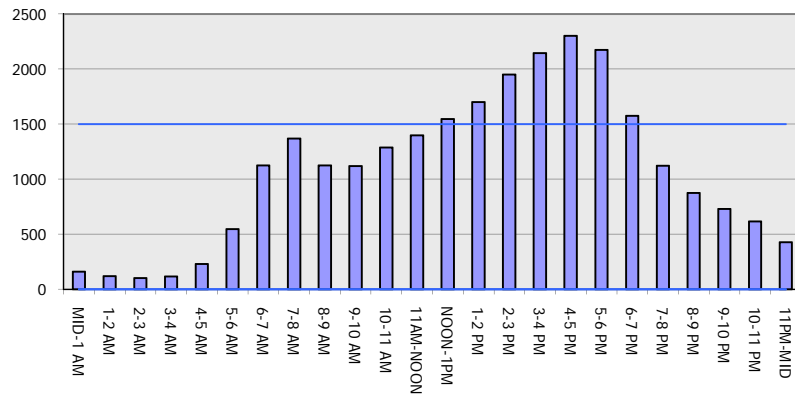
AUGUST

Analyzed for 2009
Construction Season

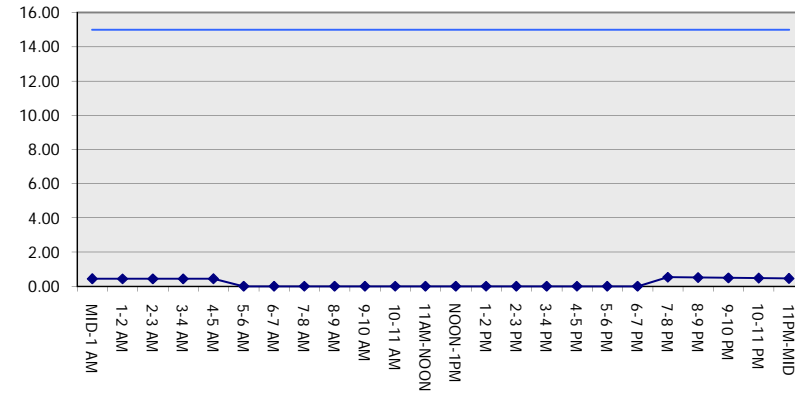
GRAPHICAL REPRESENTATION OF TRAFFIC MODEL INPUT AND OUTPUT

FRIDAY NORTHBOUND DIRECTION

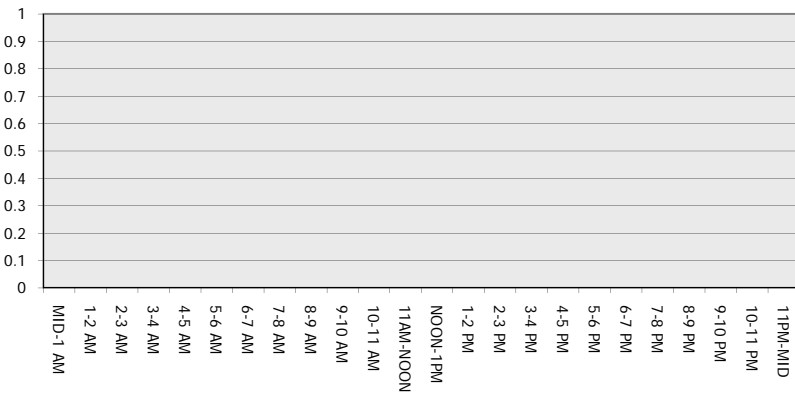
Main Route - Traffic Demand (Vehicles Per Hour)



Main Route Average Delay Per Vehicle (Minutes)



Main Route - Average Queue Length (Vehicles)



Main Route - Average Speed (MPH)

