

USH 41: IH 43 TO STH 29 (BROWN COUNTY) NIGHTTIME CLOSURE NO DIVERSION ROUTE (MAX QUEUE METHOD)	OCTOBER
	Analyzed for 2009 Construction Season

SUMMARY OF TRAFFIC MODEL OUTPUT

SATURDAY SOUTHBOUND DIRECTION

TIME OF DAY	FLOWS AND CAPACITY IN VEH/HR							AVERAGE SPEEDS IN MPH			
	MAIN ROUTE		SITE CAPA CITY	FLOW		AV.DEL PER VEH (MINS)	AVERAGE QUEUE (VEH)	MAIN ROUTE		SITE	
	DEMAND FLOW	PCT HEAVY		MAIN ROUTE	'DIVER TED'			WITHOUT WORK ZONE	WITH WORK ZONE		
MID-1 AM	222	0.0	1500	222	0	0.44	0	66.0	53.0	44.6	
1-2 AM	144	0.0	1500	144	0	0.44	0	66.1	53.3	44.9	
2-3 AM	152	0.0	1500	152	0	0.44	0	66.1	53.3	44.9	
3-4 AM	111	0.0	1500	111	0	0.43	0	66.2	53.4	45.0	
4-5 AM	206	0.0	1500	206	0	0.44	0	66.0	53.1	44.6	
5-6 AM	426	0.0	1500	426	0	0.46	0	65.6	52.4	43.8	
6-7 AM	599	0.0	1500	599	0	0.48	0	65.3	51.7	43.2	
7-8 AM	993	0.0	1499	993	0	0.52	0	64.5	50.5	41.7	
8-9 AM	1505	0.0	OFF	1505	0	0.00	0	63.6	63.6	63.6	
9-10 AM	1784	0.0	OFF	1784	0	0.00	0	63.0	63.0	63.0	
10-11 AM	2078	0.0	OFF	2078	0	0.00	0	62.5	62.5	62.5	
11AM-NOON	2061	0.0	OFF	2061	0	0.00	0	62.5	62.5	62.5	
NOON-1PM	1996	0.0	OFF	1996	0	0.00	0	62.7	62.7	62.7	
1-2 PM	1902	0.0	OFF	1902	0	0.00	0	62.8	62.8	62.8	
2-3 PM	1864	0.0	OFF	1864	0	0.00	0	62.9	62.9	62.9	
3-4 PM	1802	0.0	OFF	1802	0	0.00	0	63.0	63.0	63.0	
4-5 PM	1928	0.0	OFF	1928	0	0.00	0	62.8	62.8	62.8	
5-6 PM	1909	0.0	OFF	1909	0	0.00	0	62.8	62.8	62.8	
6-7 PM	1600	0.0	1499	1600	0	3.34	66	63.4	22.9	30.8	
7-8 PM	1376	0.0	1499	1376	0	2.62	56	63.8	26.6	32.4	
8-9 PM	1076	0.0	1500	1076	0	0.53	0	64.4	50.2	41.4	
9-10 PM	758	0.0	1500	758	0	0.50	0	65.0	51.2	42.5	
10-11 PM	580	0.0	1500	580	0	0.48	0	65.3	51.8	43.2	
11PM-MID	368	0.0	1500	368	0	0.46	0	65.7	52.5	44.0	

"OFF" INDICATES NO ROAD WORK (ALL LANES OPEN TO TRAFFIC)

----- SITE BREAKDOWN DELAYS -----	
BREAKDOWN DURATION (MINS)	0
RANGE OF QUEUE DELAY - MIN (VEH-H) MAX	0.0
AV BREAKDOWNS PER DAY	0.00
AV QUEUE DELAY/DAY (VEH-H)	0.0
AV TOTAL DELAY/DAY (VEH-H)	0.0

----- SITE ACCIDENT DELAYS -----	
BREAKDOWN DURATION (MINS)	0
RANGE OF QUEUE DELAY - MIN (VEH-H) MAX	0
AV BREAKDOWNS PER DAY	0
AV QUEUE DELAY/DAY (VEH-H)	0
AV TOTAL DELAY/DAY (VEH-H)	0

AVERAGE ACCIDENT NUMBERS (PIA/DAY)	
MAIN ROUTE WITHOUT WORKS	0.0087
MAIN ROUTE WITH WORKS	0.0082
'DIVERSION'	0.0000
PIA: Personal Injury Accidents	
IMPACTS ON ROAD USERS	
ROAD USER COSTS PER DAY	\$3,178
CONGESTED HOURS PER DAY*	0

*Delays Exceeding User-Specified Maximum

**USH 41: IH 43 TO STH 29 (BROWN COUNTY)
NIGHTTIME CLOSURE
NO DIVERSION ROUTE (MAX QUEUE METHOD)**

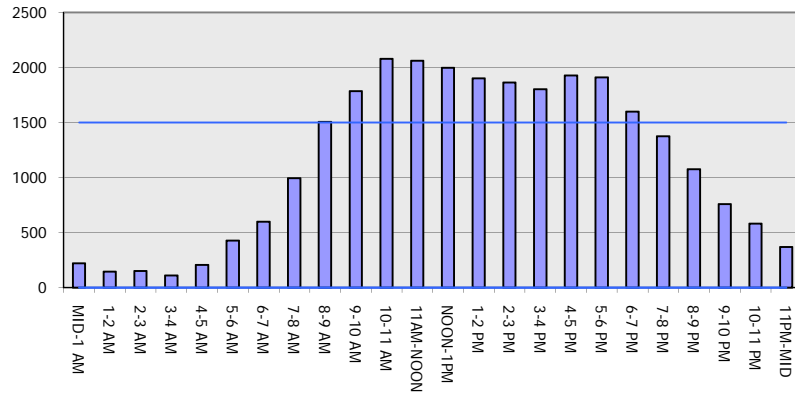
OCTOBER

Analyzed for 2009
Construction Season

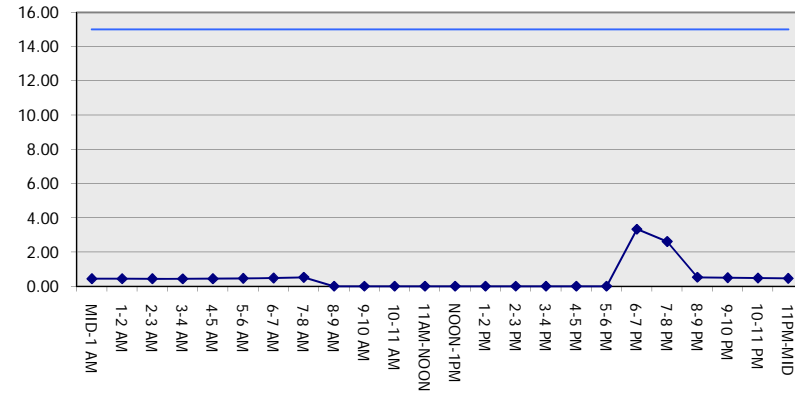
GRAPHICAL REPRESENTATION OF TRAFFIC MODEL INPUT AND OUTPUT

SATURDAY SOUTHBOUND DIRECTION

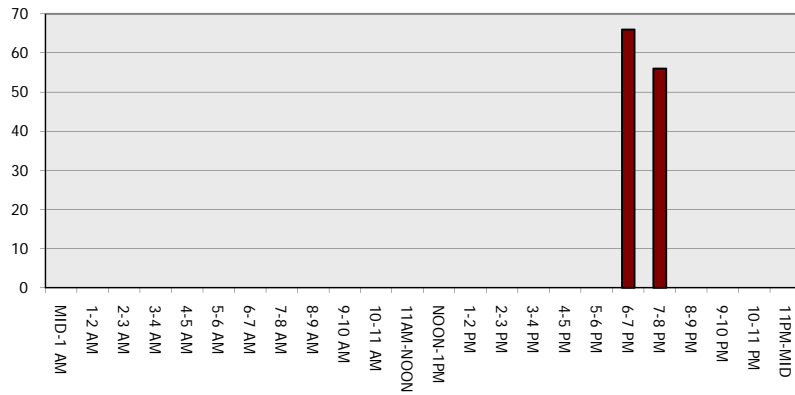
Main Route - Traffic Demand (Vehicles Per Hour)



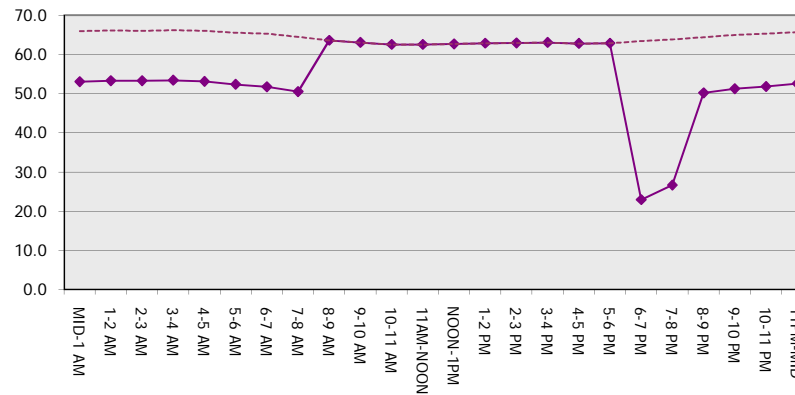
Main Route Average Delay Per Vehicle (Minutes)



Main Route - Average Queue Length (Vehicles)



Main Route - Average Speed (MPH)



USH 41: IH 43 TO STH 29 (BROWN COUNTY) NIGHTTIME CLOSURE NO DIVERSION ROUTE (MAX QUEUE METHOD)	OCTOBER
	Analyzed for 2009 Construction Season

SUMMARY OF TRAFFIC MODEL OUTPUT

SATURDAY NORTHBOUND DIRECTION

TIME OF DAY	FLOWS AND CAPACITY IN VEH/HR							AVERAGE SPEEDS IN MPH		
	MAIN ROUTE		SITE CAPA CITY	FLOW		AV.DEL PER VEH (MINS)	AVERAGE QUEUE (VEH)	MAIN ROUTE		SITE
	DEMAND FLOW	PCT HEAVY		MAIN ROUTE	'DIVER TED'			WITHOUT WORK ZONE	WITH WORK ZONE	
MID-1 AM	351	0.0	1500	351	0	0.46	0	65.7	52.6	44.1
1-2 AM	204	0.0	1500	204	0	0.44	0	66.0	53.1	44.6
2-3 AM	182	0.0	1500	182	0	0.44	0	66.1	53.2	44.8
3-4 AM	142	0.0	1500	142	0	0.44	0	66.1	53.3	44.9
4-5 AM	214	0.0	1500	214	0	0.44	0	66.0	53.0	44.6
5-6 AM	362	0.0	1500	362	0	0.46	0	65.7	52.5	44.0
6-7 AM	556	0.0	1500	556	0	0.48	0	65.3	51.9	43.3
7-8 AM	824	0.0	1500	824	0	0.50	0	64.8	51.0	42.3
8-9 AM	1225	0.0	OFF	1225	0	0.00	0	64.1	64.1	64.1
9-10 AM	1527	0.0	OFF	1527	0	0.00	0	63.5	63.5	63.5
10-11 AM	1866	0.0	OFF	1866	0	0.00	0	62.9	62.9	62.9
11AM-NOON	2107	0.0	OFF	2107	0	0.00	0	62.5	62.5	62.5
NOON-1PM	2122	0.0	OFF	2122	0	0.00	0	62.4	62.4	62.4
1-2 PM	2109	0.0	OFF	2109	0	0.00	0	62.5	62.5	62.5
2-3 PM	2100	0.0	OFF	2100	0	0.00	0	62.5	62.5	62.5
3-4 PM	2024	0.0	OFF	2024	0	0.00	0	62.6	62.6	62.6
4-5 PM	1962	0.0	OFF	1962	0	0.00	0	62.7	62.7	62.7
5-6 PM	1803	0.0	OFF	1803	0	0.00	0	63.0	63.0	63.0
6-7 PM	1570	0.0	1499	1570	0	2.77	49	63.5	25.7	30.8
7-8 PM	1329	0.0	1499	1329	0	1.38	19	63.9	36.9	34.0
8-9 PM	1170	0.0	1500	1170	0	0.60	0	64.2	48.6	39.4
9-10 PM	967	0.0	1500	967	0	0.52	0	64.6	50.5	41.8
10-11 PM	693	0.0	1500	693	0	0.49	0	65.1	51.4	42.8
11PM-MID	547	0.0	1500	547	0	0.48	0	65.4	51.9	43.3

"OFF" INDICATES NO ROAD WORK (ALL LANES OPEN TO TRAFFIC)

----- SITE BREAKDOWN DELAYS -----	
BREAKDOWN DURATION (MINS)	0
RANGE OF QUEUE DELAY - MIN (VEH-H) MAX	0.0
AV BREAKDOWNS PER DAY	0.00
AV QUEUE DELAY/DAY (VEH-H)	0.0
AV TOTAL DELAY/DAY (VEH-H)	0.0

----- SITE ACCIDENT DELAYS -----	
BREAKDOWN DURATION (MINS)	0
RANGE OF QUEUE DELAY - MIN (VEH-H) MAX	0
AV BREAKDOWNS PER DAY	0
AV QUEUE DELAY/DAY (VEH-H)	0
AV TOTAL DELAY/DAY (VEH-H)	0

AVERAGE ACCIDENT NUMBERS (PIA/DAY)	
MAIN ROUTE WITHOUT WORKS	0.0089
MAIN ROUTE WITH WORKS	0.0083
'DIVERSION'	0.0000

PIA: Personal Injury Accidents

ECONOMIC IMPACT ON ROAD USERS	
ROAD USER COSTS PER DAY	\$2,530
CONGESTED HOURS PER DAY*	0

*Delays Exceeding User-Specified Maximum

**USH 41: IH 43 TO STH 29 (BROWN COUNTY)
NIGHTTIME CLOSURE
NO DIVERSION ROUTE (MAX QUEUE METHOD)**

OCTOBER

Analyzed for 2009
Construction Season

**GRAPHICAL REPRESENTATION OF TRAFFIC MODEL INPUT AND OUTPUT
SATURDAY NORTHBOUND DIRECTION**

