

USH 41: IH 43 TO STH 29 (BROWN COUNTY) NIGHTTIME CLOSURE NO DIVERSION ROUTE (MAX QUEUE METHOD)	OCTOBER
	Analyzed for 2009 Construction Season

SUMMARY OF TRAFFIC MODEL OUTPUT

FRIDAY SOUTHBOUND DIRECTION

TIME OF DAY	FLOWS AND CAPACITY IN VEH/HR						AVERAGE SPEEDS IN MPH				
	MAIN ROUTE		SITE CAPA CITY	FLOW		AV.DEL PER VEH (MINS)	AVERAGE QUEUE (VEH)	MAIN ROUTE		SITE	
	DEMAND FLOW	PCT HEAVY		MAIN ROUTE	'DIVER TED'			WITHOUT WORK ZONE	WITH WORK ZONE		
MID-1 AM	147	0.0	1500	147	0	0.44	0	66.1	53.3	44.9	
1-2 AM	119	0.0	1500	119	0	0.43	0	66.1	53.4	45.0	
2-3 AM	131	0.0	1500	131	0	0.44	0	66.1	53.3	45.0	
3-4 AM	153	0.0	1500	153	0	0.44	0	66.1	53.3	44.9	
4-5 AM	459	0.0	1500	459	0	0.47	0	65.5	52.2	43.7	
5-6 AM	1291	0.0	OFF	1291	0	0.00	0	64.0	64.0	64.0	
6-7 AM	2432	0.0	OFF	2432	0	0.00	0	61.6	61.6	61.6	
7-8 AM	3294	0.0	OFF	3294	0	0.00	0	52.8	52.8	52.8	
8-9 AM	2163	0.0	OFF	2163	0	0.00	0	62.3	62.3	62.3	
9-10 AM	1964	0.0	OFF	1964	0	0.00	0	62.7	62.7	62.7	
10-11 AM	1970	0.0	OFF	1970	0	0.00	0	62.7	62.7	62.7	
11AM-NOON	1951	0.0	OFF	1951	0	0.00	0	62.7	62.7	62.7	
NOON-1PM	2063	0.0	OFF	2063	0	0.00	0	62.5	62.5	62.5	
1-2 PM	2038	0.0	OFF	2038	0	0.00	0	62.6	62.6	62.6	
2-3 PM	2294	0.0	OFF	2294	0	0.00	0	62.1	62.1	62.1	
3-4 PM	2450	0.0	OFF	2450	0	0.00	0	61.4	61.4	61.4	
4-5 PM	2436	0.0	OFF	2436	0	0.00	0	61.5	61.5	61.5	
5-6 PM	2333	0.0	OFF	2333	0	0.00	0	62.0	62.0	62.0	
6-7 PM	1844	0.0	OFF	1844	0	0.00	0	63.0	63.0	63.0	
7-8 PM	1172	0.0	1500	1172	0	0.60	0	64.2	48.6	39.4	
8-9 PM	847	0.0	1500	847	0	0.50	0	64.8	50.9	42.2	
9-10 PM	699	0.0	1500	699	0	0.49	0	65.1	51.4	42.8	
10-11 PM	531	0.0	1500	531	0	0.47	0	65.4	52.0	43.4	
11PM-MID	336	0.0	1500	336	0	0.46	0	65.8	52.7	44.2	

"OFF" INDICATES NO ROAD WORK (ALL LANES OPEN TO TRAFFIC)

----- SITE BREAKDOWN DELAYS -----	
BREAKDOWN DURATION (MINS)	0
RANGE OF QUEUE DELAY - MIN (VEH-H) MAX	0.0
AV BREAKDOWNS PER DAY	0.00
AV QUEUE DELAY/DAY (VEH-H)	0.0
AV TOTAL DELAY/DAY (VEH-H)	0.0

----- SITE ACCIDENT DELAYS -----	
BREAKDOWN DURATION (MINS)	0
RANGE OF QUEUE DELAY - MIN (VEH-H) MAX	0
AV BREAKDOWNS PER DAY	0
AV QUEUE DELAY/DAY (VEH-H)	0
AV TOTAL DELAY/DAY (VEH-H)	0

AVERAGE ACCIDENT NUMBERS (PIA/DAY)	
MAIN ROUTE WITHOUT WORKS	0.0112
MAIN ROUTE WITH WORKS	0.0109
'DIVERSION'	0.0000
<small>PIA: Personal Injury Accidents</small>	
IMPACTS ON ROAD USERS	
ROAD USER COSTS PER DAY	\$579
CONGESTED HOURS PER DAY*	0

*Delays Exceeding User-Specified Maximum

**USH 41: IH 43 TO STH 29 (BROWN COUNTY)
NIGHTTIME CLOSURE
NO DIVERSION ROUTE (MAX QUEUE METHOD)**

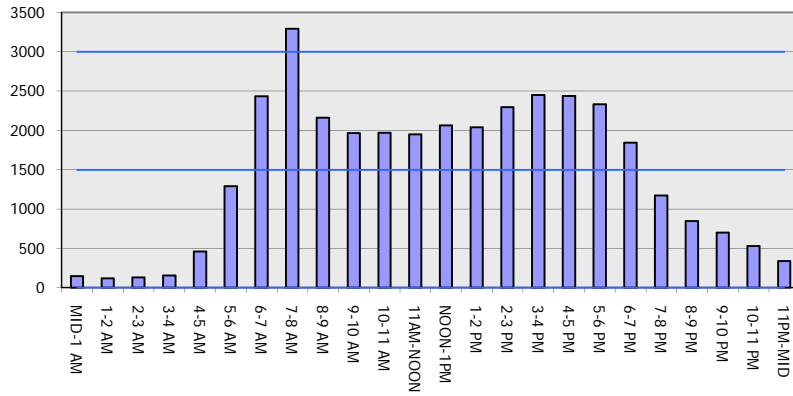
OCTOBER

Analyzed for 2009
Construction Season

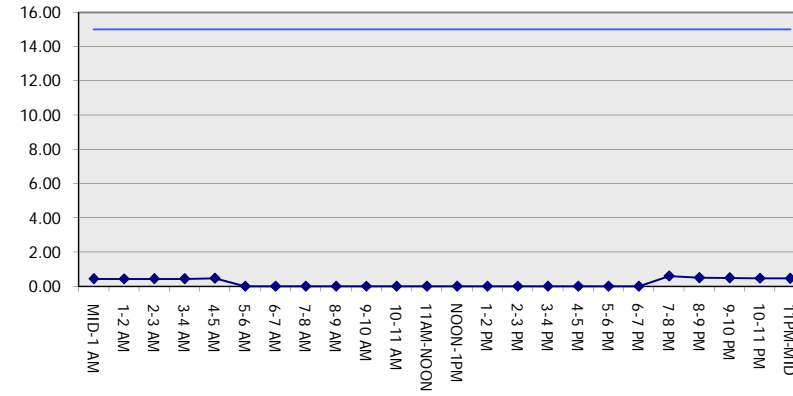
GRAPHICAL REPRESENTATION OF TRAFFIC MODEL INPUT AND OUTPUT

FRIDAY SOUTHBOUND DIRECTION

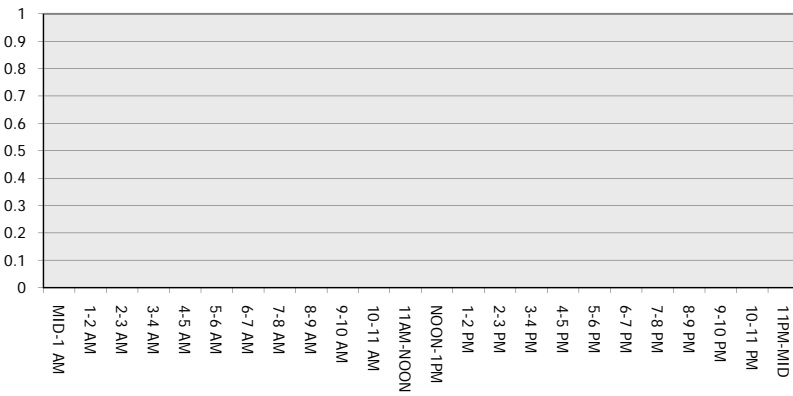
Main Route - Traffic Demand (Vehicles Per Hour)



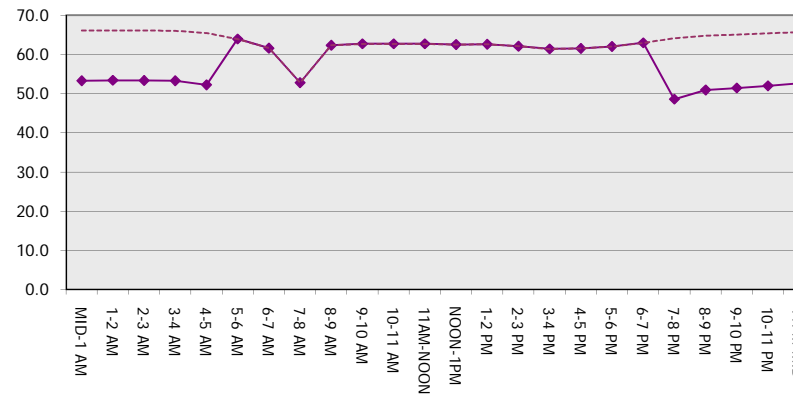
Main Route Average Delay Per Vehicle (Minutes)



Main Route - Average Queue Length (Vehicles)



Main Route - Average Speed (MPH)



USH 41: IH 43 TO STH 29 (BROWN COUNTY) NIGHTTIME CLOSURE NO DIVERSION ROUTE (MAX QUEUE METHOD)	OCTOBER
	Analyzed for 2009 Construction Season

SUMMARY OF TRAFFIC MODEL OUTPUT

FRIDAY NORTHBOUND DIRECTION

TIME OF DAY	FLOWS AND CAPACITY IN VEH/HR						AVERAGE SPEEDS IN MPH			
	MAIN ROUTE		SITE CAPA CITY	FLOW		AV.DEL PER VEH (MINS)	AVERAGE QUEUE (VEH)	MAIN ROUTE		SITE
	DEMAND FLOW	PCT HEAVY		MAIN ROUTE	'DIVER TED'			WITHOUT WORK ZONE	WITH WORK ZONE	
MID-1 AM	231	0.0	1500	231	0	0.44	0	66.0	53.0	44.6
1-2 AM	151	0.0	1500	151	0	0.44	0	66.1	53.3	44.9
2-3 AM	161	0.0	1500	161	0	0.44	0	66.1	53.2	44.8
3-4 AM	146	0.0	1500	146	0	0.44	0	66.1	53.3	44.9
4-5 AM	255	0.0	1500	255	0	0.45	0	65.9	52.9	44.5
5-6 AM	613	0.0	OFF	613	0	0.00	0	65.3	65.3	65.3
6-7 AM	1255	0.0	OFF	1255	0	0.00	0	64.0	64.0	64.0
7-8 AM	1597	0.0	OFF	1597	0	0.00	0	63.4	63.4	63.4
8-9 AM	1459	0.0	OFF	1459	0	0.00	0	63.7	63.7	63.7
9-10 AM	1506	0.0	OFF	1506	0	0.00	0	63.6	63.6	63.6
10-11 AM	1740	0.0	OFF	1740	0	0.00	0	63.2	63.2	63.2
11AM-NOON	1969	0.0	OFF	1969	0	0.00	0	62.7	62.7	62.7
NOON-1PM	2225	0.0	OFF	2225	0	0.00	0	62.2	62.2	62.2
1-2 PM	2426	0.0	OFF	2426	0	0.00	0	61.7	61.7	61.7
2-3 PM	2718	0.0	OFF	2718	0	0.00	0	58.6	58.6	58.6
3-4 PM	3393	0.0	OFF	3393	0	0.00	0	51.7	51.7	51.7
4-5 PM	3625	0.0	OFF	3625	0	0.00	0	49.4	49.4	49.4
5-6 PM	3486	0.0	OFF	3486	0	0.00	0	50.8	50.8	50.8
6-7 PM	2523	0.0	OFF	2523	0	0.00	0	60.7	60.7	60.7
7-8 PM	1739	0.0	1499	1739	0	6.24	155	63.2	15.2	30.8
8-9 PM	1393	0.0	1499	1393	0	8.36	200	63.8	12.4	30.8
9-10 PM	1280	0.0	1500	1280	0	2.01	50	64.0	30.9	34.5
10-11 PM	925	0.0	1500	925	0	0.51	0	64.6	50.7	41.9
11PM-MID	601	0.0	1500	601	0	0.48	0	65.3	51.7	43.1

"OFF" INDICATES NO ROAD WORK (ALL LANES OPEN TO TRAFFIC)

----- SITE BREAKDOWN DELAYS -----	
BREAKDOWN DURATION (MINS)	0
RANGE OF QUEUE DELAY - MIN (VEH-H) MAX	0.0
AV BREAKDOWNS PER DAY	0.00
AV QUEUE DELAY/DAY (VEH-H)	0.0
AV TOTAL DELAY/DAY (VEH-H)	0.0

----- SITE ACCIDENT DELAYS -----	
BREAKDOWN DURATION (MINS)	0
RANGE OF QUEUE DELAY - MIN (VEH-H) MAX	0
AV BREAKDOWNS PER DAY	0
AV QUEUE DELAY/DAY (VEH-H)	0
AV TOTAL DELAY/DAY (VEH-H)	0

AVERAGE ACCIDENT NUMBERS (PIA/DAY)	
MAIN ROUTE WITHOUT WORKS	0.0119
MAIN ROUTE WITH WORKS	0.0115
'DIVERSION'	0.0000

PIA: Personal Injury Accidents

ECONOMIC IMPACT ON ROAD USERS	
ROAD USER COSTS PER DAY	\$6,525
CONGESTED HOURS PER DAY*	0

*Delays Exceeding User-Specified Maximum

**USH 41: IH 43 TO STH 29 (BROWN COUNTY)
NIGHTTIME CLOSURE
NO DIVERSION ROUTE (MAX QUEUE METHOD)**

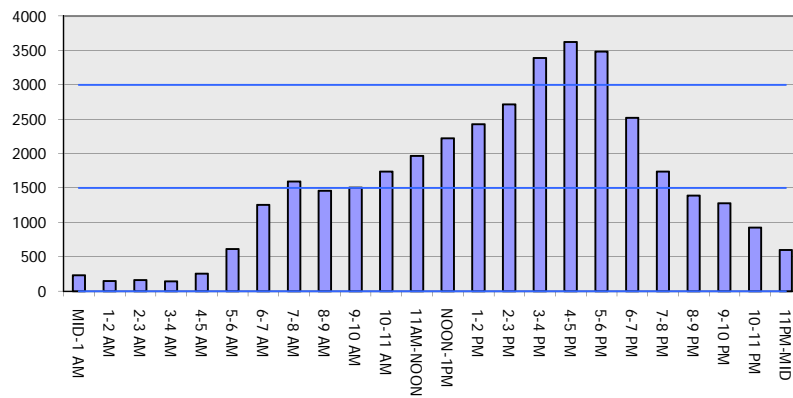
OCTOBER

Analyzed for 2009
Construction Season

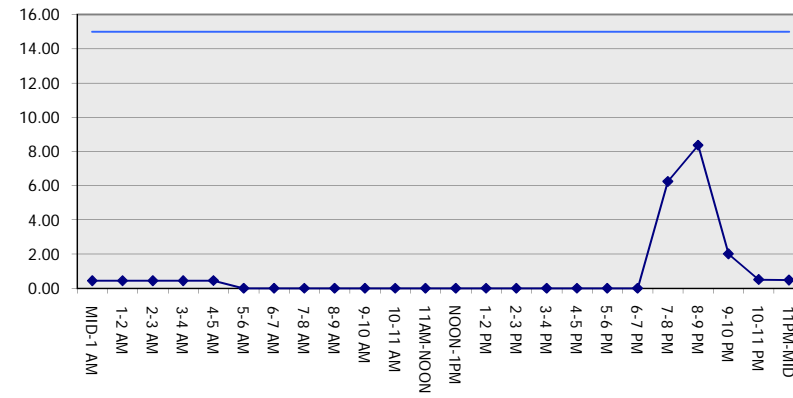
GRAPHICAL REPRESENTATION OF TRAFFIC MODEL INPUT AND OUTPUT

FRIDAY NORTHBOUND DIRECTION

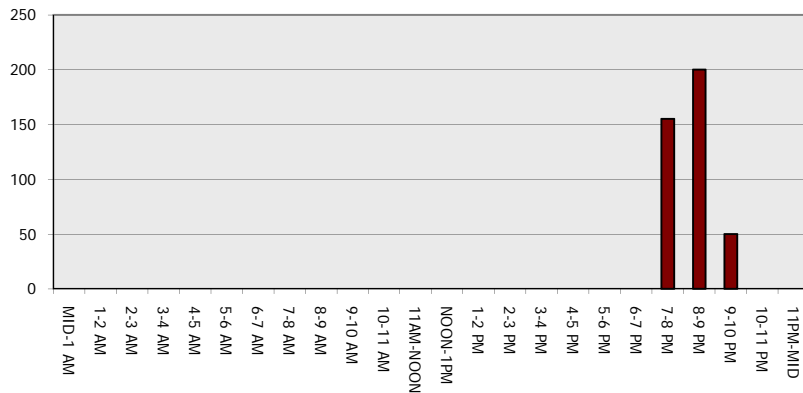
Main Route - Traffic Demand (Vehicles Per Hour)



Main Route Average Delay Per Vehicle (Minutes)



Main Route - Average Queue Length (Vehicles)



Main Route - Average Speed (MPH)

