

<b>USH 41: IH 43 TO STH 29 (BROWN COUNTY)                  NIGHTTIME CLOSURE                  NO DIVERSION ROUTE (MAX QUEUE METHOD)</b>	<b>AUGUST</b>
	Analyzed for 2009 Construction Season

**SUMMARY OF TRAFFIC MODEL OUTPUT**

SATURDAY SOUTHBOUND DIRECTION

TIME OF DAY	FLOWS AND CAPACITY IN VEH/HR						AVERAGE SPEEDS IN MPH			
	MAIN ROUTE		SITE CAPA CITY	FLOW		AV.DEL PER VEH (MINS)	AVERAGE QUEUE (VEH)	MAIN ROUTE		SITE
	DEMAND FLOW	PCT HEAVY		MAIN ROUTE	'DIVER TED'			WITHOUT WORK ZONE	WITH WORK ZONE	
MID-1 AM	265	0.0	1500	265	0	0.45	0	65.9	52.8	44.4
1-2 AM	157	0.0	1500	157	0	0.44	0	66.1	53.2	44.8
2-3 AM	169	0.0	1500	169	0	0.44	0	66.1	53.2	44.8
3-4 AM	119	0.0	1500	119	0	0.43	0	66.1	53.4	45.0
4-5 AM	212	0.0	1500	212	0	0.44	0	66.0	53.0	44.6
5-6 AM	419	0.0	1500	419	0	0.46	0	65.6	52.4	43.8
6-7 AM	598	0.0	1500	598	0	0.48	0	65.3	51.7	43.2
7-8 AM	927	0.0	1500	927	0	0.51	0	64.6	50.7	41.9
8-9 AM	1260	0.0	OFF	1260	0	0.00	0	64.0	64.0	64.0
9-10 AM	1611	0.0	OFF	1611	0	0.00	0	63.4	63.4	63.4
10-11 AM	1932	0.0	OFF	1932	0	0.00	0	62.8	62.8	62.8
11AM-NOON	2035	0.0	OFF	2035	0	0.00	0	62.6	62.6	62.6
NOON-1PM	2057	0.0	OFF	2057	0	0.00	0	62.5	62.5	62.5
1-2 PM	1951	0.0	OFF	1951	0	0.00	0	62.7	62.7	62.7
2-3 PM	1922	0.0	OFF	1922	0	0.00	0	62.8	62.8	62.8
3-4 PM	1900	0.0	OFF	1900	0	0.00	0	62.8	62.8	62.8
4-5 PM	1859	0.0	OFF	1859	0	0.00	0	62.9	62.9	62.9
5-6 PM	1708	0.0	OFF	1708	0	0.00	0	63.2	63.2	63.2
6-7 PM	1294	0.0	1500	1294	0	0.76	0	64.0	45.6	35.6
7-8 PM	985	0.0	1500	985	0	0.52	0	64.5	50.5	41.7
8-9 PM	900	0.0	1500	900	0	0.51	0	64.7	50.7	42.0
9-10 PM	742	0.0	1500	742	0	0.49	0	65.0	51.3	42.6
10-11 PM	604	0.0	1500	604	0	0.48	0	65.3	51.7	43.1
11PM-MID	408	0.0	1500	408	0	0.46	0	65.6	52.4	43.8

"OFF" INDICATES NO ROAD WORK (ALL LANES OPEN TO TRAFFIC)

*----- SITE BREAKDOWN DELAYS -----*	
BREAKDOWN DURATION (MINS)	0
RANGE OF QUEUE DELAY - MIN (VEH-H) MAX	0.0
AV BREAKDOWNS PER DAY	0.00
AV QUEUE DELAY/DAY (VEH-H)	0.0
AV TOTAL DELAY/DAY (VEH-H)	0.0

*----- SITE ACCIDENT DELAYS -----*	
BREAKDOWN DURATION (MINS)	0
RANGE OF QUEUE DELAY - MIN (VEH-H) MAX	0
AV BREAKDOWNS PER DAY	0
AV QUEUE DELAY/DAY (VEH-H)	0
AV TOTAL DELAY/DAY (VEH-H)	0

AVERAGE ACCIDENT NUMBERS (PIA/DAY)	
MAIN ROUTE WITHOUT WORKS	0.0083
MAIN ROUTE WITH WORKS	0.0078
'DIVERSION'	0.0000
PIA: Personal Injury Accidents	
IMPACTS ON ROAD USERS	
ROAD USER COSTS PER DAY	\$990
CONGESTED HOURS PER DAY*	0

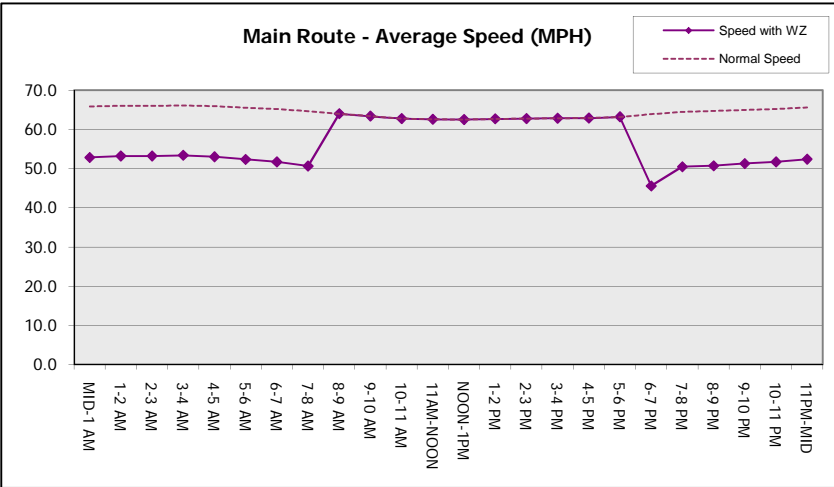
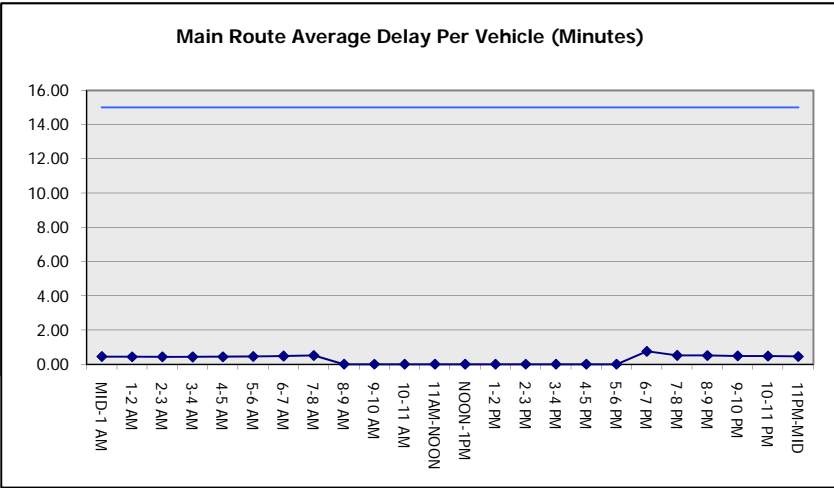
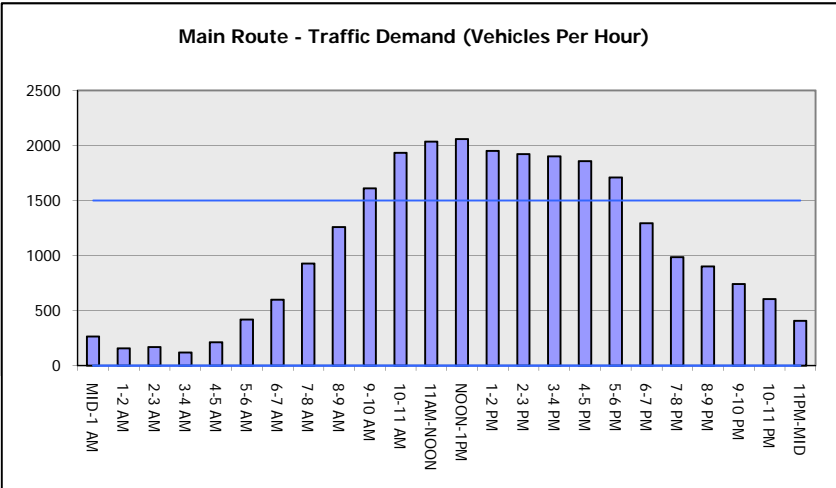
\*Delays Exceeding User-Specified Maximum

**USH 41: IH 43 TO STH 29 (BROWN COUNTY)  
NIGHTTIME CLOSURE  
NO DIVERSION ROUTE (MAX QUEUE METHOD)**

**AUGUST**  
Analyzed for 2009  
Construction Season

**GRAPHICAL REPRESENTATION OF TRAFFIC MODEL INPUT AND OUTPUT**

**SATURDAY SOUTHBOUND DIRECTION**



<b>USH 41: IH 43 TO STH 29 (BROWN COUNTY)                  NIGHTTIME CLOSURE                  NO DIVERSION ROUTE (MAX QUEUE METHOD)</b>	<b>AUGUST</b>
	Analyzed for 2009 Construction Season

**SUMMARY OF TRAFFIC MODEL OUTPUT**

SATURDAY NORTHBOUND DIRECTION

TIME OF DAY	FLOWS AND CAPACITY IN VEH/HR						AVERAGE SPEEDS IN MPH			
	MAIN ROUTE		SITE CAPA CITY	FLOW		AV.DEL PER VEH (MINS)	AVERAGE QUEUE (VEH)	MAIN ROUTE		SITE
	DEMAND FLOW	PCT HEAVY		MAIN ROUTE	'DIVER TED'			WITHOUT WORK ZONE	WITH WORK ZONE	
MID-1 AM	351	0.0	1500	351	0	0.46	0	65.7	52.6	44.1
1-2 AM	221	0.0	1500	221	0	0.44	0	66.0	53.0	44.6
2-3 AM	192	0.0	1500	192	0	0.44	0	66.0	53.2	44.7
3-4 AM	161	0.0	1500	161	0	0.44	0	66.1	53.2	44.8
4-5 AM	175	0.0	1500	175	0	0.44	0	66.1	53.2	44.8
5-6 AM	312	0.0	1500	312	0	0.45	0	65.8	52.7	44.2
6-7 AM	530	0.0	1500	530	0	0.47	0	65.4	52.0	43.4
7-8 AM	750	0.0	1500	750	0	0.50	0	65.0	51.2	42.6
8-9 AM	1071	0.0	OFF	1071	0	0.00	0	64.4	64.4	64.4
9-10 AM	1512	0.0	OFF	1512	0	0.00	0	63.6	63.6	63.6
10-11 AM	1916	0.0	OFF	1916	0	0.00	0	62.8	62.8	62.8
11AM-NOON	2125	0.0	OFF	2125	0	0.00	0	62.4	62.4	62.4
NOON-1PM	2059	0.0	OFF	2059	0	0.00	0	62.5	62.5	62.5
1-2 PM	1973	0.0	OFF	1973	0	0.00	0	62.7	62.7	62.7
2-3 PM	1933	0.0	OFF	1933	0	0.00	0	62.8	62.8	62.8
3-4 PM	1832	0.0	OFF	1832	0	0.00	0	63.0	63.0	63.0
4-5 PM	1706	0.0	OFF	1706	0	0.00	0	63.2	63.2	63.2
5-6 PM	1504	0.0	OFF	1504	0	0.00	0	63.6	63.6	63.6
6-7 PM	1325	0.0	1500	1325	0	0.80	0	63.9	44.8	34.8
7-8 PM	1037	0.0	1500	1037	0	0.52	0	64.5	50.3	41.5
8-9 PM	1009	0.0	1500	1009	0	0.52	0	64.5	50.4	41.7
9-10 PM	898	0.0	1500	898	0	0.51	0	64.7	50.8	42.0
10-11 PM	1115	0.0	1500	1115	0	0.53	0	64.3	50.1	41.3
11PM-MID	647	0.0	1500	647	0	0.49	0	65.2	51.6	43.0

"OFF" INDICATES NO ROAD WORK (ALL LANES OPEN TO TRAFFIC)

*----- SITE BREAKDOWN DELAYS -----*	
BREAKDOWN DURATION (MINS)	0
RANGE OF QUEUE DELAY - MIN	0.0
(VEH-H) MAX	0.0
AV BREAKDOWNS PER DAY	0.00
AV QUEUE DELAY/DAY (VEH-H)	0.0
AV TOTAL DELAY/DAY (VEH-H)	0.0

*----- SITE ACCIDENT DELAYS -----*	
BREAKDOWN DURATION (MINS)	0
RANGE OF QUEUE DELAY - MIN	0
(VEH-H) MAX	0
AV BREAKDOWNS PER DAY	0
AV QUEUE DELAY/DAY (VEH-H)	0
AV TOTAL DELAY/DAY (VEH-H)	0

AVERAGE ACCIDENT NUMBERS (PIA/DAY)	
MAIN ROUTE WITHOUT WORKS	0.0084
MAIN ROUTE WITH WORKS	0.0078
'DIVERSION'	0.0000

PIA: Personal Injury Accidents

ECONOMIC IMPACT ON ROAD USERS	
ROAD USER COSTS PER DAY	\$1,131
CONGESTED HOURS PER DAY*	0

\*Delays Exceeding User-Specified Maximum

**USH 41: IH 43 TO STH 29 (BROWN COUNTY)  
NIGHTTIME CLOSURE  
NO DIVERSION ROUTE (MAX QUEUE METHOD)**

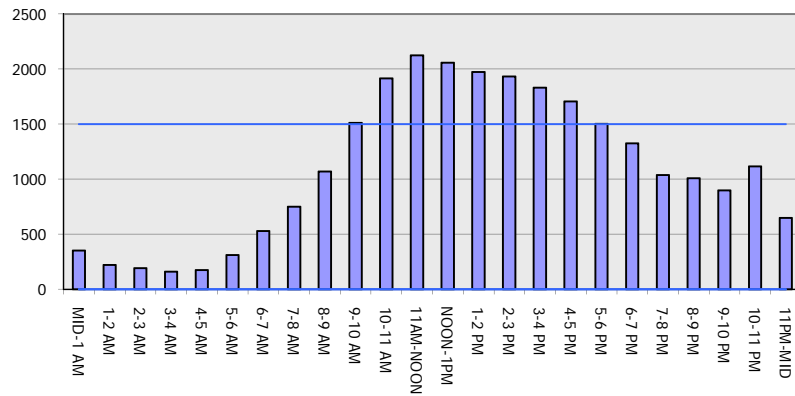
**AUGUST**

Analyzed for 2009  
Construction Season

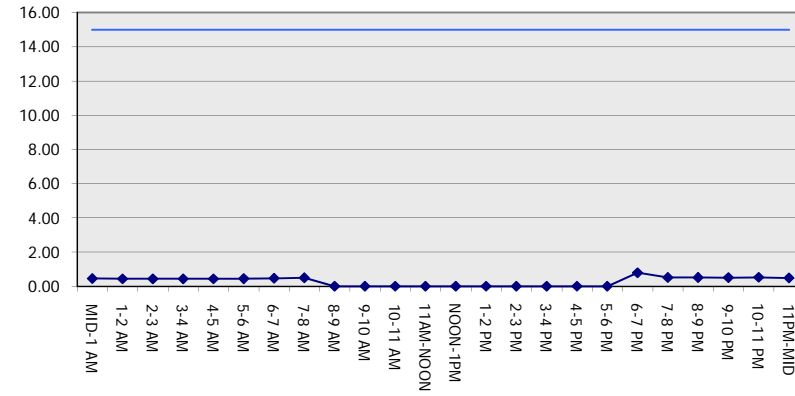
**GRAPHICAL REPRESENTATION OF TRAFFIC MODEL INPUT AND OUTPUT**

**SATURDAY NORTHBOUND DIRECTION**

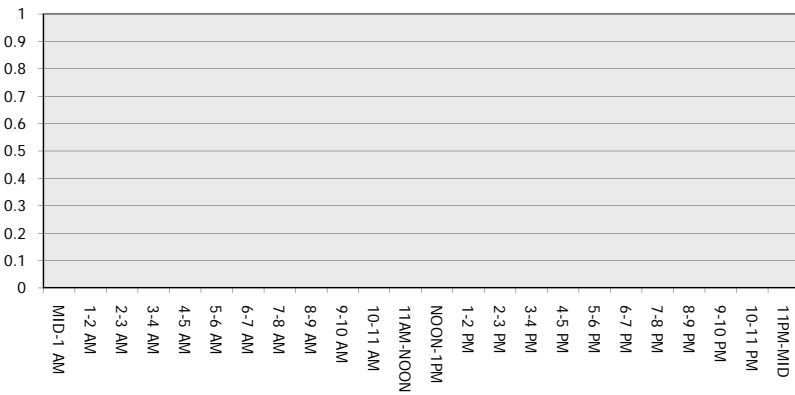
**Main Route - Traffic Demand (Vehicles Per Hour)**



**Main Route Average Delay Per Vehicle (Minutes)**



**Main Route - Average Queue Length (Vehicles)**



**Main Route - Average Speed (MPH)**

