

USH 41: CTH M TO IH 43 (BROWN COUNTY) NIGHTTIME CLOSURE NO DIVERSION ROUTE (MAX QUEUE METHOD)	OCTOBER
	Analyzed for 2009 Construction Season

SUMMARY OF TRAFFIC MODEL OUTPUT

SUNDAY SOUTHBOUND DIRECTION

TIME OF DAY	FLOWS AND CAPACITY IN VEH/HR						AVERAGE SPEEDS IN MPH			
	MAIN ROUTE		SITE CAPA CITY	FLOW		AV.DEL PER VEH (MINS)	AVERAGE QUEUE (VEH)	MAIN ROUTE		SITE
	DEMAND FLOW	PCT HEAVY		MAIN ROUTE	'DIVER TED'			WITHOUT WORK ZONE	WITH WORK ZONE	
MID-1 AM	165	0.0	1500	165	0	0.44	0	66.1	54.2	44.8
1-2 AM	94	0.0	1500	94	0	0.43	0	66.2	54.4	45.1
2-3 AM	74	0.0	1500	74	0	0.43	0	66.3	54.5	45.2
3-4 AM	68	0.0	1500	68	0	0.43	0	66.3	54.5	45.2
4-5 AM	145	0.0	1500	145	0	0.44	0	66.1	54.2	44.9
5-6 AM	366	0.0	1500	366	0	0.46	0	65.7	53.5	44.0
6-7 AM	360	0.0	1500	360	0	0.46	0	65.7	53.5	44.0
7-8 AM	682	0.0	1500	682	0	0.49	0	65.1	52.5	42.8
8-9 AM	1328	0.0	1499	1328	0	0.85	2	63.9	45.3	35.8
9-10 AM	2238	0.0	OFF	2238	0	0.00	0	62.2	62.2	62.2
10-11 AM	2570	0.0	OFF	2570	0	0.00	0	60.2	60.2	60.2
11AM-NOON	2355	0.0	OFF	2355	0	0.00	0	62.0	62.0	62.0
NOON-1PM	2104	0.0	OFF	2104	0	0.00	0	62.5	62.5	62.5
1-2 PM	2215	0.0	OFF	2215	0	0.00	0	62.3	62.3	62.3
2-3 PM	2211	0.0	OFF	2211	0	0.00	0	62.3	62.3	62.3
3-4 PM	1758	0.0	OFF	1758	0	0.00	0	63.1	63.1	63.1
4-5 PM	1955	0.0	OFF	1955	0	0.00	0	62.7	62.7	62.7
5-6 PM	1872	0.0	OFF	1872	0	0.00	0	62.9	62.9	62.9
6-7 PM	1519	0.0	OFF	1519	0	0.00	0	63.5	63.5	63.5
7-8 PM	1203	0.0	1500	1203	0	0.64	0	64.1	48.9	38.3
8-9 PM	802	0.0	1500	802	0	0.50	0	64.9	52.1	42.4
9-10 PM	462	0.0	1500	462	0	0.47	0	65.5	53.2	43.7
10-11 PM	281	0.0	1500	281	0	0.45	0	65.9	53.8	44.3
11PM-MID	132	0.0	1500	132	0	0.44	0	66.1	54.3	45.0

"OFF" INDICATES NO ROAD WORK (ALL LANES OPEN TO TRAFFIC)

----- SITE BREAKDOWN DELAYS -----	
BREAKDOWN DURATION (MINS)	0
RANGE OF QUEUE DELAY - MIN (VEH-H) MAX	0.0
AV BREAKDOWNS PER DAY	0.00
AV QUEUE DELAY/DAY (VEH-H)	0.0
AV TOTAL DELAY/DAY (VEH-H)	0.0

----- SITE ACCIDENT DELAYS -----	
BREAKDOWN DURATION (MINS)	0
RANGE OF QUEUE DELAY - MIN (VEH-H) MAX	0
AV BREAKDOWNS PER DAY	0
AV QUEUE DELAY/DAY (VEH-H)	0
AV TOTAL DELAY/DAY (VEH-H)	0

AVERAGE ACCIDENT NUMBERS (PIA/DAY)	
MAIN ROUTE WITHOUT WORKS	0.0094
MAIN ROUTE WITH WORKS	0.0090
'DIVERSION'	0.0000
PIA: Personal Injury Accidents	
IMPACTS ON ROAD USERS	
ROAD USER COSTS PER DAY	\$848
CONGESTED HOURS PER DAY*	0

*Delays Exceeding User-Specified Maximum

**USH 41: CTH M TO IH 43 (BROWN COUNTY)
NIGHTTIME CLOSURE
NO DIVERSION ROUTE (MAX QUEUE METHOD)**

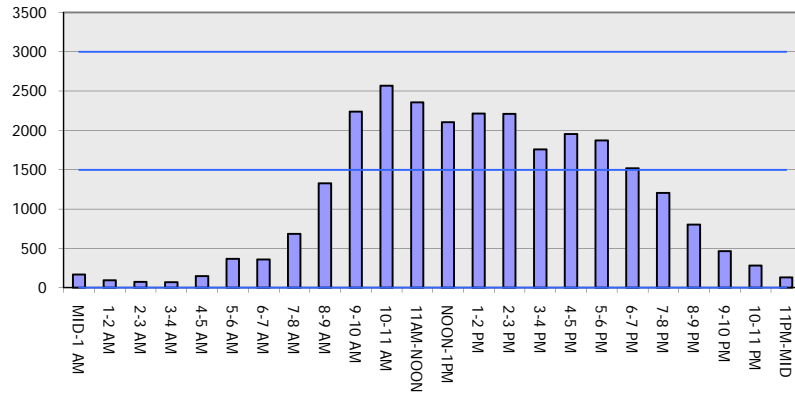
OCTOBER

Analyzed for 2009
Construction Season

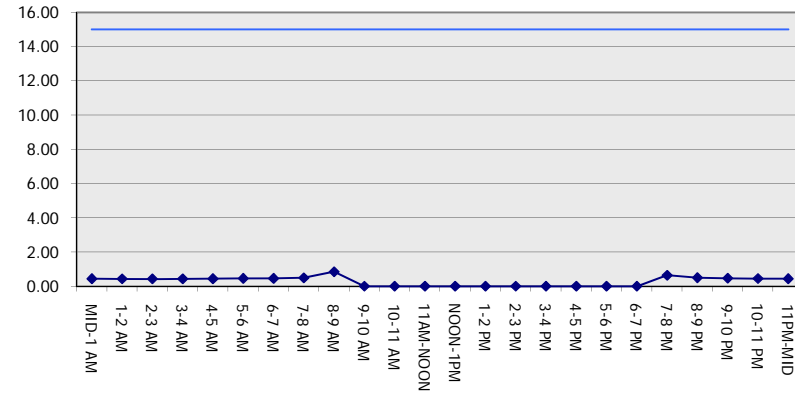
GRAPHICAL REPRESENTATION OF TRAFFIC MODEL INPUT AND OUTPUT

SUNDAY SOUTHBOUND DIRECTION

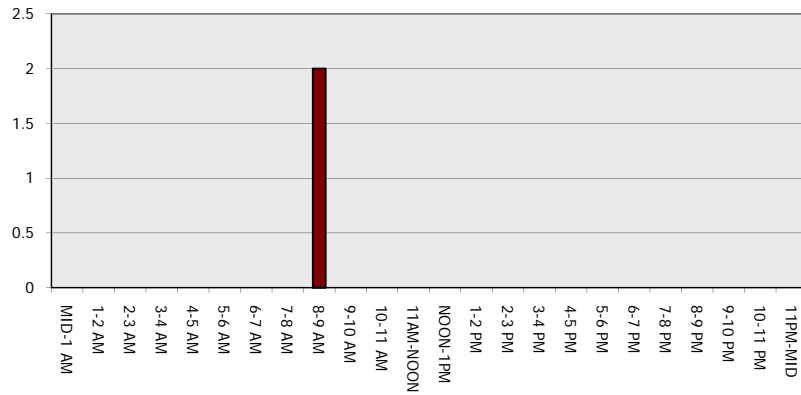
Main Route - Traffic Demand (Vehicles Per Hour)



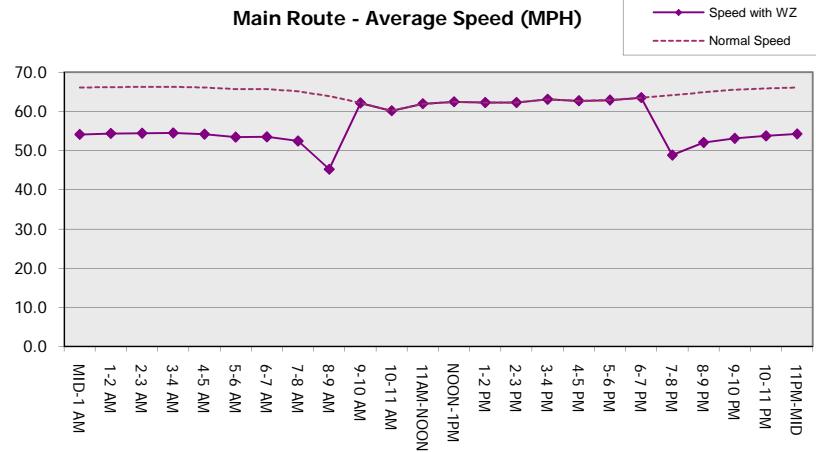
Main Route Average Delay Per Vehicle (Minutes)



Main Route - Average Queue Length (Vehicles)



Main Route - Average Speed (MPH)



USH 41: CTH M TO IH 43 (BROWN COUNTY) NIGHTTIME CLOSURE NO DIVERSION ROUTE (MAX QUEUE METHOD)	OCTOBER
	Analyzed for 2009 Construction Season

SUMMARY OF TRAFFIC MODEL OUTPUT

SUNDAY NORTHBOUND DIRECTION

TIME OF DAY	FLOWS AND CAPACITY IN VEH/HR						AVERAGE SPEEDS IN MPH			
	MAIN ROUTE		SITE CAPA CITY	FLOW		AV.DEL PER VEH (MINS)	AVERAGE QUEUE (VEH)	MAIN ROUTE		SITE
	DEMAND FLOW	PCT HEAVY		MAIN ROUTE	'DIVER TED'			WITHOUT WORK ZONE	WITH WORK ZONE	
MID-1 AM	313	0.0	1500	313	0	0.45	0	65.8	53.7	44.2
1-2 AM	174	0.0	1500	174	0	0.44	0	66.1	54.2	44.8
2-3 AM	148	0.0	1500	148	0	0.44	0	66.1	54.2	44.9
3-4 AM	88	0.0	1500	88	0	0.43	0	66.2	54.5	45.1
4-5 AM	113	0.0	1500	113	0	0.43	0	66.2	54.3	45.0
5-6 AM	182	0.0	1500	182	0	0.44	0	66.1	54.1	44.8
6-7 AM	307	0.0	1500	307	0	0.45	0	65.8	53.7	44.3
7-8 AM	373	0.0	1500	373	0	0.46	0	65.7	53.5	44.0
8-9 AM	490	0.0	1500	490	0	0.47	0	65.5	53.1	43.5
9-10 AM	718	0.0	OFF	718	0	0.00	0	65.0	65.0	65.0
10-11 AM	988	0.0	OFF	988	0	0.00	0	64.5	64.5	64.5
11AM-NOON	1226	0.0	OFF	1226	0	0.00	0	64.1	64.1	64.1
NOON-1PM	1181	0.0	OFF	1181	0	0.00	0	64.2	64.2	64.2
1-2 PM	1190	0.0	OFF	1190	0	0.00	0	64.1	64.1	64.1
2-3 PM	1277	0.0	OFF	1277	0	0.00	0	64.0	64.0	64.0
3-4 PM	1583	0.0	OFF	1583	0	0.00	0	63.5	63.5	63.5
4-5 PM	1845	0.0	OFF	1845	0	0.00	0	63.0	63.0	63.0
5-6 PM	1588	0.0	OFF	1588	0	0.00	0	63.4	63.4	63.4
6-7 PM	1213	0.0	OFF	1213	0	0.00	0	64.1	64.1	64.1
7-8 PM	839	0.0	1500	839	0	0.50	0	64.8	52.0	42.2
8-9 PM	571	0.0	1500	571	0	0.48	0	65.3	52.8	43.2
9-10 PM	334	0.0	1500	334	0	0.45	0	65.8	53.6	44.2
10-11 PM	261	0.0	1500	261	0	0.45	0	65.9	53.8	44.5
11PM-MID	171	0.0	1500	171	0	0.44	0	66.1	54.2	44.8

"OFF" INDICATES NO ROAD WORK (ALL LANES OPEN TO TRAFFIC)

----- SITE BREAKDOWN DELAYS -----	
BREAKDOWN DURATION (MINS)	0
RANGE OF QUEUE DELAY - MIN (VEH-H) MAX	0.0
AV BREAKDOWNS PER DAY	0.00
AV QUEUE DELAY/DAY (VEH-H)	0.0
AV TOTAL DELAY/DAY (VEH-H)	0.0

----- SITE ACCIDENT DELAYS -----	
BREAKDOWN DURATION (MINS)	0
RANGE OF QUEUE DELAY - MIN (VEH-H) MAX	0
AV BREAKDOWNS PER DAY	0
AV QUEUE DELAY/DAY (VEH-H)	0
AV TOTAL DELAY/DAY (VEH-H)	0

AVERAGE ACCIDENT NUMBERS (PIA/DAY)	
MAIN ROUTE WITHOUT WORKS	0.0060
MAIN ROUTE WITH WORKS	0.0057
'DIVERSION'	0.0000

PIA: Personal Injury Accidents

ECONOMIC IMPACT ON ROAD USERS	
ROAD USER COSTS PER DAY	\$476
CONGESTED HOURS PER DAY*	0

*Delays Exceeding User-Specified Maximum

**USH 41: CTH M TO IH 43 (BROWN COUNTY)
NIGHTTIME CLOSURE
NO DIVERSION ROUTE (MAX QUEUE METHOD)**

OCTOBER

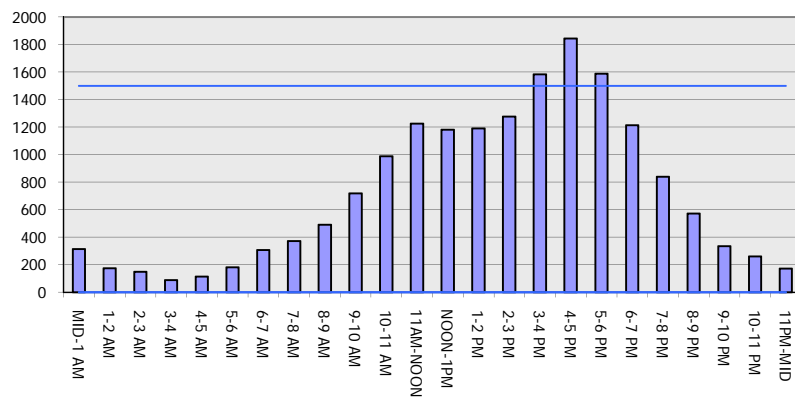
Analyzed for 2009
Construction Season

GRAPHICAL REPRESENTATION OF TRAFFIC MODEL INPUT AND OUTPUT

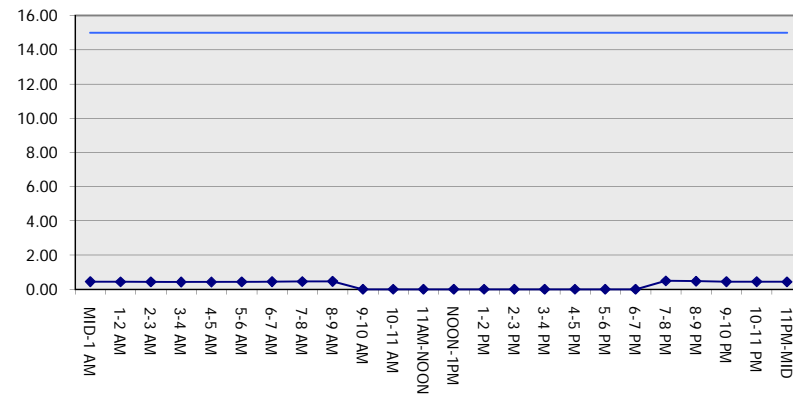
SUNDAY

NORTHBOUND DIRECTION

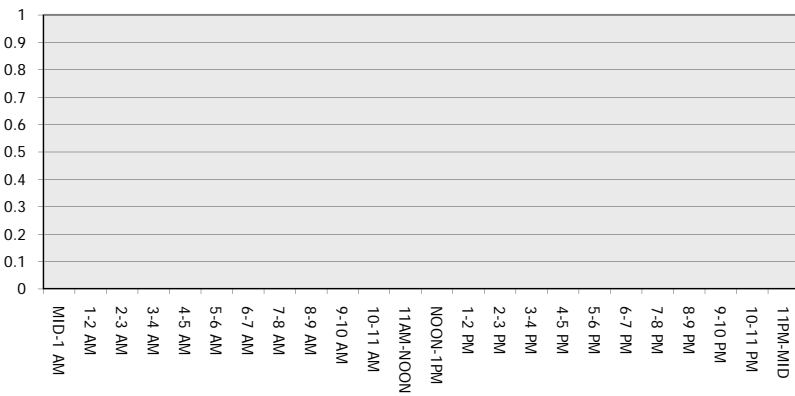
Main Route - Traffic Demand (Vehicles Per Hour)



Main Route Average Delay Per Vehicle (Minutes)



Main Route - Average Queue Length (Vehicles)



Main Route - Average Speed (MPH)

