

USH 41: CTH M TO IH 43 (BROWN COUNTY) NIGHTTIME CLOSURE NO DIVERSION ROUTE (MAX QUEUE METHOD)	OCTOBER
	Analyzed for 2009 Construction Season

SUMMARY OF TRAFFIC MODEL OUTPUT

FRIDAY SOUTHBOUND DIRECTION

TIME OF DAY	FLOWS AND CAPACITY IN VEH/HR						AVERAGE SPEEDS IN MPH				
	MAIN ROUTE		SITE CAPA CITY	FLOW		AV.DEL PER VEH (MINS)	AVERAGE QUEUE (VEH)	MAIN ROUTE		SITE	
	DEMAND FLOW	PCT HEAVY		MAIN ROUTE	'DIVER TED'			WITHOUT WORK ZONE	WITH WORK ZONE		
MID-1 AM	91	0.0	1500	91	0	0.43	0	66.2	54.4	45.1	
1-2 AM	65	0.0	1500	65	0	0.43	0	66.3	54.5	45.2	
2-3 AM	128	0.0	1500	128	0	0.43	0	66.1	54.3	45.0	
3-4 AM	143	0.0	1500	143	0	0.44	0	66.1	54.3	44.9	
4-5 AM	502	0.0	1500	502	0	0.47	0	65.5	53.0	43.5	
5-6 AM	1400	0.0	OFF	1400	0	0.00	0	63.8	63.8	63.8	
6-7 AM	2542	0.0	OFF	2542	0	0.00	0	60.5	60.5	60.5	
7-8 AM	2966	0.0	OFF	2966	0	0.00	0	56.1	56.1	56.1	
8-9 AM	1861	0.0	OFF	1861	0	0.00	0	62.9	62.9	62.9	
9-10 AM	1611	0.0	OFF	1611	0	0.00	0	63.4	63.4	63.4	
10-11 AM	1631	0.0	OFF	1631	0	0.00	0	63.3	63.3	63.3	
11AM-NOON	1420	0.0	OFF	1420	0	0.00	0	63.7	63.7	63.7	
NOON-1PM	1462	0.0	OFF	1462	0	0.00	0	63.7	63.7	63.7	
1-2 PM	1565	0.0	OFF	1565	0	0.00	0	63.5	63.5	63.5	
2-3 PM	1602	0.0	OFF	1602	0	0.00	0	63.4	63.4	63.4	
3-4 PM	1655	0.0	OFF	1655	0	0.00	0	63.3	63.3	63.3	
4-5 PM	1963	0.0	OFF	1963	0	0.00	0	62.7	62.7	62.7	
5-6 PM	1883	0.0	OFF	1883	0	0.00	0	62.8	62.8	62.8	
6-7 PM	1324	0.0	OFF	1324	0	0.00	0	63.9	63.9	63.9	
7-8 PM	1144	0.0	1500	1144	0	0.56	0	64.3	50.4	40.4	
8-9 PM	762	0.0	1500	762	0	0.50	0	65.0	52.2	42.5	
9-10 PM	607	0.0	1500	607	0	0.48	0	65.3	52.7	43.1	
10-11 PM	385	0.0	1500	385	0	0.46	0	65.6	53.4	44.0	
11PM-MID	213	0.0	1500	213	0	0.44	0	66.0	54.0	44.6	

"OFF" INDICATES NO ROAD WORK (ALL LANES OPEN TO TRAFFIC)

----- SITE BREAKDOWN DELAYS -----	
BREAKDOWN DURATION (MINS)	0
RANGE OF QUEUE DELAY - MIN (VEH-H) MAX	0.0
AV BREAKDOWNS PER DAY	0.00
AV QUEUE DELAY/DAY (VEH-H)	0.0
AV TOTAL DELAY/DAY (VEH-H)	0.0

----- SITE ACCIDENT DELAYS -----	
BREAKDOWN DURATION (MINS)	0
RANGE OF QUEUE DELAY - MIN (VEH-H) MAX	0
AV BREAKDOWNS PER DAY	0
AV QUEUE DELAY/DAY (VEH-H)	0
AV TOTAL DELAY/DAY (VEH-H)	0

AVERAGE ACCIDENT NUMBERS (PIA/DAY)	
MAIN ROUTE WITHOUT WORKS	0.0101
MAIN ROUTE WITH WORKS	0.0099
'DIVERSION'	0.0000
<small>PIA: Personal Injury Accidents</small>	
IMPACTS ON ROAD USERS	
ROAD USER COSTS PER DAY	\$492
CONGESTED HOURS PER DAY*	0

*Delays Exceeding User-Specified Maximum

**USH 41: CTH M TO IH 43 (BROWN COUNTY)
NIGHTTIME CLOSURE
NO DIVERSION ROUTE (MAX QUEUE METHOD)**

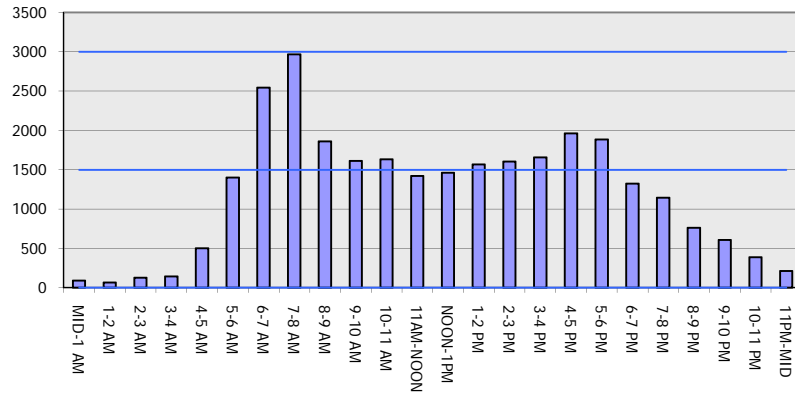
OCTOBER

Analyzed for 2009
Construction Season

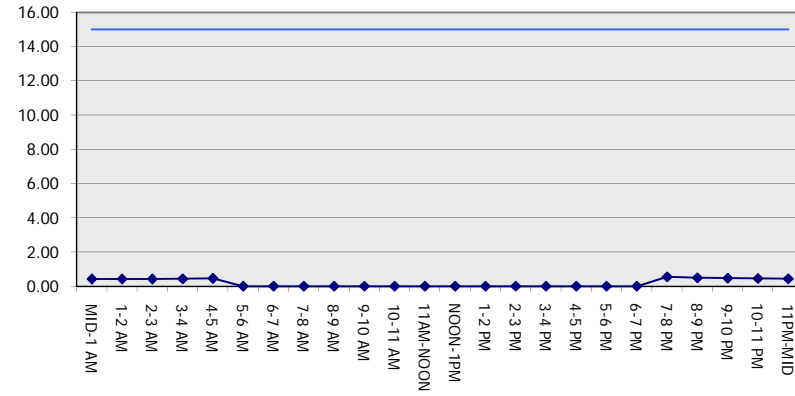
GRAPHICAL REPRESENTATION OF TRAFFIC MODEL INPUT AND OUTPUT

FRIDAY SOUTHBOUND DIRECTION

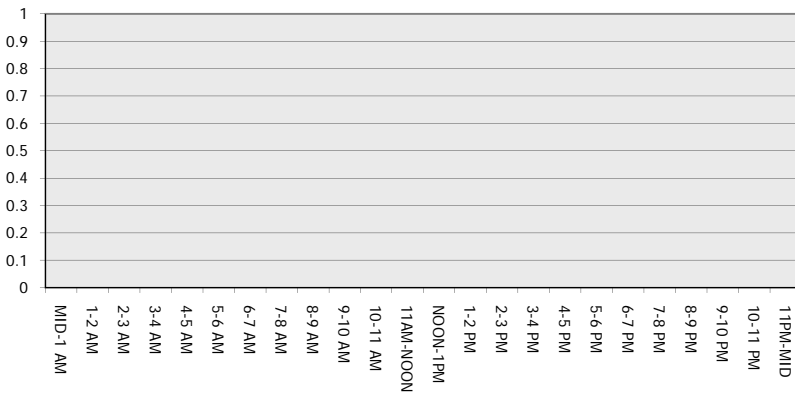
Main Route - Traffic Demand (Vehicles Per Hour)



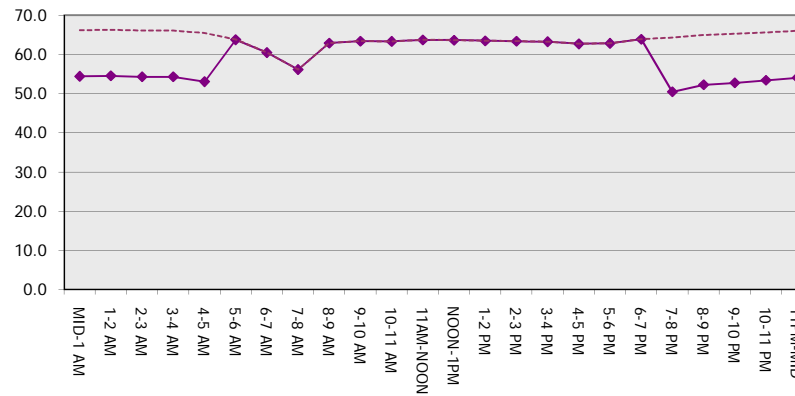
Main Route Average Delay Per Vehicle (Minutes)



Main Route - Average Queue Length (Vehicles)



Main Route - Average Speed (MPH)



USH 41: CTH M TO IH 43 (BROWN COUNTY) NIGHTTIME CLOSURE NO DIVERSION ROUTE (MAX QUEUE METHOD)	OCTOBER
	Analyzed for 2009 Construction Season

SUMMARY OF TRAFFIC MODEL OUTPUT

FRIDAY NORTHBOUND DIRECTION

TIME OF DAY	FLOWS AND CAPACITY IN VEH/HR						AVERAGE SPEEDS IN MPH			
	MAIN ROUTE		SITE CAPA CITY	FLOW		AV.DEL PER VEH (MINS)	AVERAGE QUEUE (VEH)	MAIN ROUTE		SITE
	DEMAND FLOW	PCT HEAVY		MAIN ROUTE	'DIVER TED'			WITHOUT WORK ZONE	WITH WORK ZONE	
MID-1 AM	197	0.0	1500	197	0	0.44	0	66.0	54.1	44.7
1-2 AM	177	0.0	1500	177	0	0.44	0	66.1	54.2	44.8
2-3 AM	154	0.0	1500	154	0	0.44	0	66.1	54.2	44.9
3-4 AM	139	0.0	1500	139	0	0.44	0	66.1	54.3	44.9
4-5 AM	188	0.0	1500	188	0	0.44	0	66.0	54.1	44.7
5-6 AM	456	0.0	OFF	456	0	0.00	0	65.5	65.5	65.5
6-7 AM	868	0.0	OFF	868	0	0.00	0	64.8	64.8	64.8
7-8 AM	1040	0.0	OFF	1040	0	0.00	0	64.5	64.5	64.5
8-9 AM	1075	0.0	OFF	1075	0	0.00	0	64.4	64.4	64.4
9-10 AM	1190	0.0	OFF	1190	0	0.00	0	64.1	64.1	64.1
10-11 AM	1449	0.0	OFF	1449	0	0.00	0	63.7	63.7	63.7
11AM-NOON	1552	0.0	OFF	1552	0	0.00	0	63.5	63.5	63.5
NOON-1PM	1780	0.0	OFF	1780	0	0.00	0	63.1	63.1	63.1
1-2 PM	2210	0.0	OFF	2210	0	0.00	0	62.3	62.3	62.3
2-3 PM	2624	0.0	OFF	2624	0	0.00	0	59.6	59.6	59.6
3-4 PM	3322	0.0	OFF	3322	0	0.00	0	52.5	52.5	52.5
4-5 PM	3896	0.0	OFF	3896	0	0.00	0	46.6	46.6	46.6
5-6 PM	3925	0.0	OFF	3925	0	0.00	0	46.3	46.3	46.3
6-7 PM	2804	0.0	OFF	2804	0	0.00	0	57.8	57.8	57.8
7-8 PM	1906	0.0	1499	1906	0	9.17	245	62.8	12.7	30.8
8-9 PM	1457	0.0	1499	1457	0	16.02+	404	63.7	9.2	30.8
9-10 PM	1266	0.0	1499	1266	0	10.40	263	64.0	11.6	31.4
10-11 PM	902	0.0	1500	902	0	0.84	16	64.7	45.8	41.9
11PM-MID	566	0.0	1500	566	0	0.48	0	65.3	52.8	43.3

"OFF" INDICATES NO ROAD WORK (ALL LANES OPEN TO TRAFFIC)

+ INDICATES QUEUEING EXCEEDS USER-SPECIFIED MAXIMUM LIMIT

----- SITE BREAKDOWN DELAYS -----	
BREAKDOWN DURATION (MINS)	0
RANGE OF QUEUE DELAY - MIN (VEH-H) MAX	0.0
AV BREAKDOWNS PER DAY	0.00
AV QUEUE DELAY/DAY (VEH-H)	0.0
AV TOTAL DELAY/DAY (VEH-H)	0.0

----- SITE ACCIDENT DELAYS -----	
BREAKDOWN DURATION (MINS)	0
RANGE OF QUEUE DELAY - MIN (VEH-H) MAX	0
AV BREAKDOWNS PER DAY	0
AV QUEUE DELAY/DAY (VEH-H)	0
AV TOTAL DELAY/DAY (VEH-H)	0

AVERAGE ACCIDENT NUMBERS (PIA/DAY)	
MAIN ROUTE WITHOUT WORKS	0.0123
MAIN ROUTE WITH WORKS	0.0118
'DIVERSION'	0.0000

PIA: Personal Injury Accidents

ECONOMIC IMPACT ON ROAD USERS	
ROAD USER COSTS PER DAY	\$13,584
CONGESTED HOURS PER DAY*	1

*Delays Exceeding User-Specified Maximum

**USH 41: CTH M TO IH 43 (BROWN COUNTY)
NIGHTTIME CLOSURE
NO DIVERSION ROUTE (MAX QUEUE METHOD)**

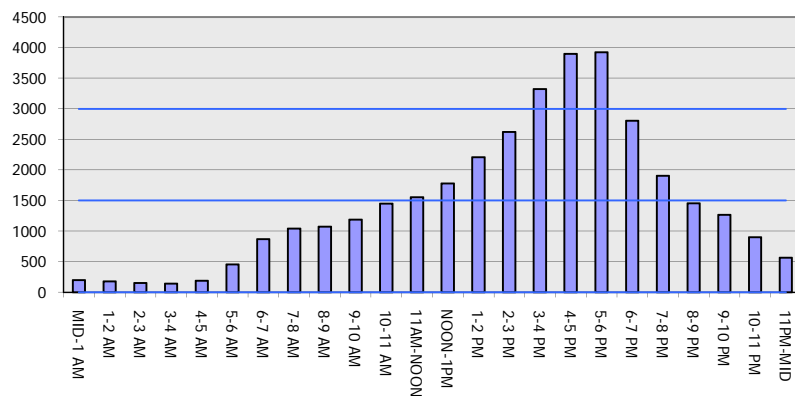
OCTOBER

Analyzed for 2009
Construction Season

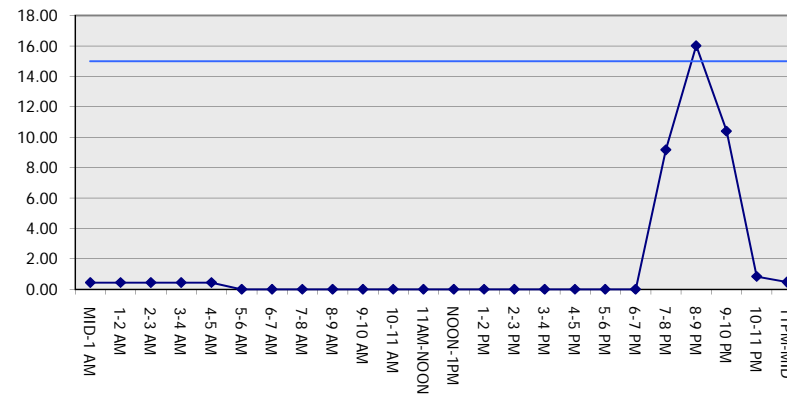
GRAPHICAL REPRESENTATION OF TRAFFIC MODEL INPUT AND OUTPUT

FRIDAY NORTHBOUND DIRECTION

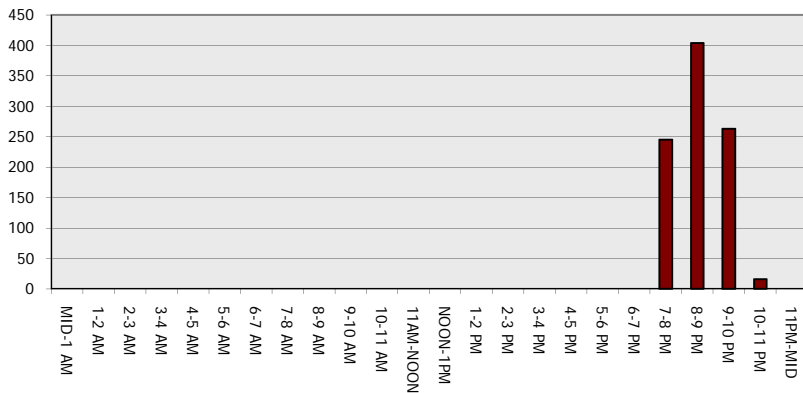
Main Route - Traffic Demand (Vehicles Per Hour)



Main Route Average Delay Per Vehicle (Minutes)



Main Route - Average Queue Length (Vehicles)



Main Route - Average Speed (MPH)

