

<b>USH 41: CTH M TO IH 43 (BROWN COUNTY)</b> <b>NIGHTTIME CLOSURE</b> <b>NO DIVERSION ROUTE (MAX QUEUE METHOD)</b>	<b>AUGUST</b>
	Analyzed for 2009 Construction Season

**SUMMARY OF TRAFFIC MODEL OUTPUT**

MON-THUR      SOUTHBOUND DIRECTION

TIME OF DAY	FLOWS AND CAPACITY IN VEH/HR						AVERAGE SPEEDS IN MPH			
	MAIN ROUTE		SITE CAPA CITY	FLOW		AV.DEL PER VEH (MINS)	AVERAGE QUEUE (VEH)	MAIN ROUTE		SITE
	DEMAND FLOW	PCT HEAVY		MAIN ROUTE	'DIVER TED'			WITHOUT WORK ZONE	WITH WORK ZONE	
MID-1 AM	109	0.0	1500	109	0	0.43	0	66.2	54.4	45.0
1-2 AM	80	0.0	1500	80	0	0.43	0	66.3	54.5	45.1
2-3 AM	114	0.0	1500	114	0	0.43	0	66.2	54.3	45.0
3-4 AM	166	0.0	1500	166	0	0.44	0	66.1	54.2	44.8
4-5 AM	563	0.0	1500	563	0	0.48	0	65.3	52.8	43.3
5-6 AM	1551	0.0	OFF	1551	0	0.00	0	63.5	63.5	63.5
6-7 AM	2596	0.0	OFF	2596	0	0.00	0	59.9	59.9	59.9
7-8 AM	2813	0.0	OFF	2813	0	0.00	0	57.7	57.7	57.7
8-9 AM	1821	0.0	OFF	1821	0	0.00	0	63.0	63.0	63.0
9-10 AM	1549	0.0	OFF	1549	0	0.00	0	63.5	63.5	63.5
10-11 AM	1600	0.0	OFF	1600	0	0.00	0	63.4	63.4	63.4
11AM-NOON	1562	0.0	OFF	1562	0	0.00	0	63.5	63.5	63.5
NOON-1PM	1550	0.0	OFF	1550	0	0.00	0	63.5	63.5	63.5
1-2 PM	1626	0.0	OFF	1626	0	0.00	0	63.3	63.3	63.3
2-3 PM	1633	0.0	OFF	1633	0	0.00	0	63.3	63.3	63.3
3-4 PM	1613	0.0	OFF	1613	0	0.00	0	63.4	63.4	63.4
4-5 PM	1671	0.0	OFF	1671	0	0.00	0	63.3	63.3	63.3
5-6 PM	1598	0.0	OFF	1598	0	0.00	0	63.4	63.4	63.4
6-7 PM	1078	0.0	OFF	1078	0	0.00	0	64.4	64.4	64.4
7-8 PM	764	0.0	1500	764	0	0.50	0	65.0	52.2	42.5
8-9 PM	647	0.0	1500	647	0	0.49	0	65.2	52.6	43.0
9-10 PM	508	0.0	1500	508	0	0.47	0	65.5	53.0	43.5
10-11 PM	352	0.0	1500	352	0	0.46	0	65.7	53.5	44.1
11PM-MID	166	0.0	1500	166	0	0.44	0	66.1	54.2	44.8

"OFF" INDICATES NO ROAD WORK (ALL LANES OPEN TO TRAFFIC)

*----- SITE BREAKDOWN DELAYS -----*	
BREAKDOWN DURATION (MINS)	0
RANGE OF QUEUE DELAY - MIN (VEH-H) MAX	0.0
AV BREAKDOWNS PER DAY	0.00
AV QUEUE DELAY/DAY (VEH-H)	0.0
AV TOTAL DELAY/DAY (VEH-H)	0.0

*----- SITE ACCIDENT DELAYS -----*	
BREAKDOWN DURATION (MINS)	0
RANGE OF QUEUE DELAY - MIN (VEH-H) MAX	0
AV BREAKDOWNS PER DAY	0
AV QUEUE DELAY/DAY (VEH-H)	0
AV TOTAL DELAY/DAY (VEH-H)	0

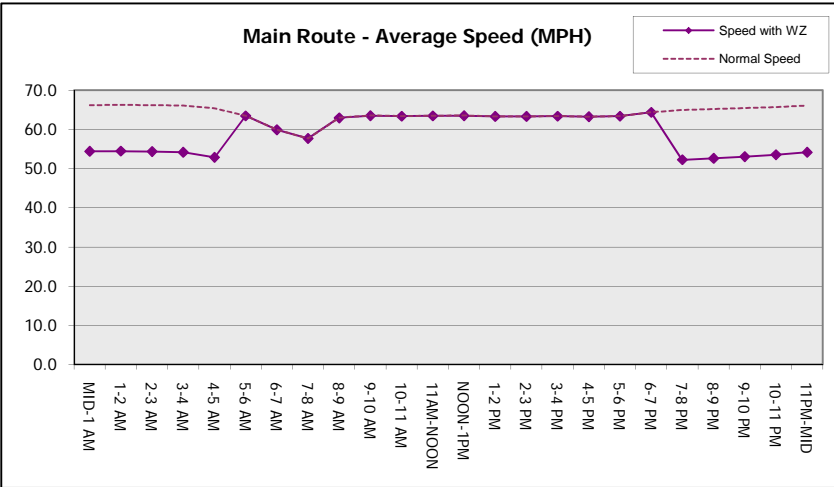
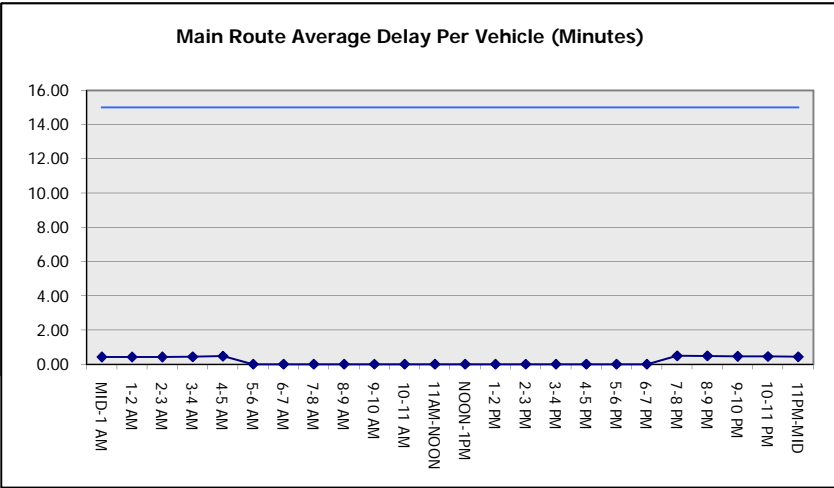
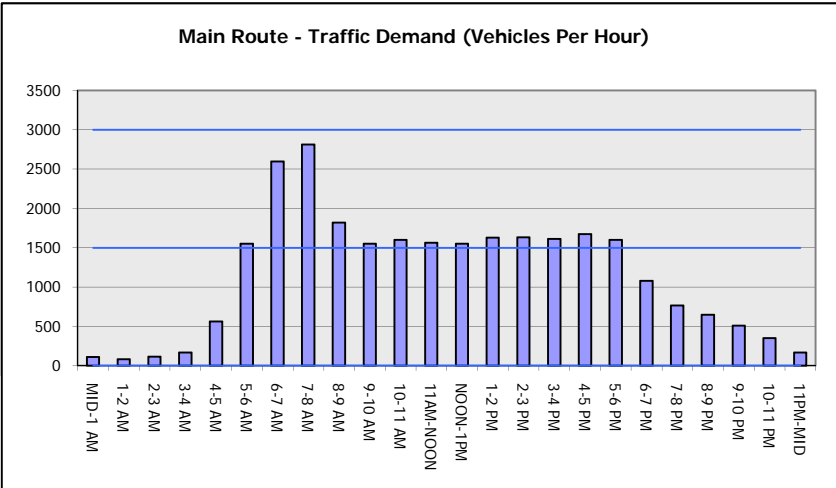
AVERAGE ACCIDENT NUMBERS (PIA/DAY)	
MAIN ROUTE WITHOUT WORKS	0.0097
MAIN ROUTE WITH WORKS	0.0095
'DIVERSION'	0.0000
<small>PIA: Personal Injury Accidents</small>	
IMPACTS ON ROAD USERS	
ROAD USER COSTS PER DAY	\$343
CONGESTED HOURS PER DAY*	0

\*Delays Exceeding User-Specified Maximum

**USH 41: CTH M TO IH 43 (BROWN COUNTY)  
NIGHTTIME CLOSURE  
NO DIVERSION ROUTE (MAX QUEUE METHOD)**

**AUGUST**  
Analyzed for 2009  
Construction Season

**GRAPHICAL REPRESENTATION OF TRAFFIC MODEL INPUT AND OUTPUT**  
**MON-THUR SOUTHBOUND DIRECTION**



<b>USH 41: CTH M TO IH 43 (BROWN COUNTY)                  NIGHTTIME CLOSURE                  NO DIVERSION ROUTE (MAX QUEUE METHOD)</b>	<b>AUGUST</b>
	Analyzed for 2009 Construction Season

**SUMMARY OF TRAFFIC MODEL OUTPUT**

MON-THUR                      NORTHBOUND DIRECTION

TIME OF DAY	FLOWS AND CAPACITY IN VEH/HR						AVERAGE SPEEDS IN MPH			
	MAIN ROUTE		SITE CAPA CITY	FLOW		AV.DEL PER VEH (MINS)	AVERAGE QUEUE (VEH)	MAIN ROUTE		SITE
	DEMAND FLOW	PCT HEAVY		MAIN ROUTE	'DIVER TED'			WITHOUT WORK ZONE	WITH WORK ZONE	
MID-1 AM	222	0.0	1500	222	0	0.44	0	66.0	54.0	44.6
1-2 AM	129	0.0	1500	129	0	0.43	0	66.1	54.3	45.0
2-3 AM	125	0.0	1500	125	0	0.43	0	66.1	54.3	45.0
3-4 AM	136	0.0	1500	136	0	0.44	0	66.1	54.3	45.0
4-5 AM	197	0.0	1500	197	0	0.44	0	66.0	54.1	44.7
5-6 AM	425	0.0	OFF	425	0	0.00	0	65.6	65.6	65.6
6-7 AM	888	0.0	OFF	888	0	0.00	0	64.7	64.7	64.7
7-8 AM	977	0.0	OFF	977	0	0.00	0	64.6	64.6	64.6
8-9 AM	997	0.0	OFF	997	0	0.00	0	64.5	64.5	64.5
9-10 AM	1047	0.0	OFF	1047	0	0.00	0	64.5	64.5	64.5
10-11 AM	1191	0.0	OFF	1191	0	0.00	0	64.1	64.1	64.1
11AM-NOON	1273	0.0	OFF	1273	0	0.00	0	64.0	64.0	64.0
NOON-1PM	1375	0.0	OFF	1375	0	0.00	0	63.8	63.8	63.8
1-2 PM	1554	0.0	OFF	1554	0	0.00	0	63.5	63.5	63.5
2-3 PM	1833	0.0	OFF	1833	0	0.00	0	63.0	63.0	63.0
3-4 PM	2431	0.0	OFF	2431	0	0.00	0	61.6	61.6	61.6
4-5 PM	3113	0.0	OFF	3113	0	0.00	0	54.6	54.6	54.6
5-6 PM	2972	0.0	OFF	2972	0	0.00	0	56.1	56.1	56.1
6-7 PM	1960	0.0	OFF	1960	0	0.00	0	62.7	62.7	62.7
7-8 PM	1333	0.0	1500	1333	0	0.81	0	63.9	45.9	34.7
8-9 PM	1124	0.0	1500	1124	0	0.54	0	64.3	50.9	41.0
9-10 PM	881	0.0	1500	881	0	0.51	0	64.8	51.9	42.1
10-11 PM	560	0.0	1500	560	0	0.48	0	65.3	52.8	43.3
11PM-MID	381	0.0	1500	381	0	0.46	0	65.7	53.5	44.0

"OFF" INDICATES NO ROAD WORK (ALL LANES OPEN TO TRAFFIC)

*----- SITE BREAKDOWN DELAYS -----*	
BREAKDOWN DURATION (MINS)	0
RANGE OF QUEUE DELAY - MIN (VEH-H) MAX	0.0
AV BREAKDOWNS PER DAY	0.00
AV QUEUE DELAY/DAY (VEH-H)	0.0
AV TOTAL DELAY/DAY (VEH-H)	0.0

*----- SITE ACCIDENT DELAYS -----*	
BREAKDOWN DURATION (MINS)	0
RANGE OF QUEUE DELAY - MIN (VEH-H) MAX	0
AV BREAKDOWNS PER DAY	0
AV QUEUE DELAY/DAY (VEH-H)	0
AV TOTAL DELAY/DAY (VEH-H)	0

AVERAGE ACCIDENT NUMBERS (PIA/DAY)	
MAIN ROUTE WITHOUT WORKS	0.0095
MAIN ROUTE WITH WORKS	0.0092
'DIVERSION'	0.0000

PIA: Personal Injury Accidents

ECONOMIC IMPACT ON ROAD USERS	
ROAD USER COSTS PER DAY	\$611
CONGESTED HOURS PER DAY*	0

\*Delays Exceeding User-Specified Maximum

**USH 41: CTH M TO IH 43 (BROWN COUNTY)  
NIGHTTIME CLOSURE  
NO DIVERSION ROUTE (MAX QUEUE METHOD)**

**AUGUST**

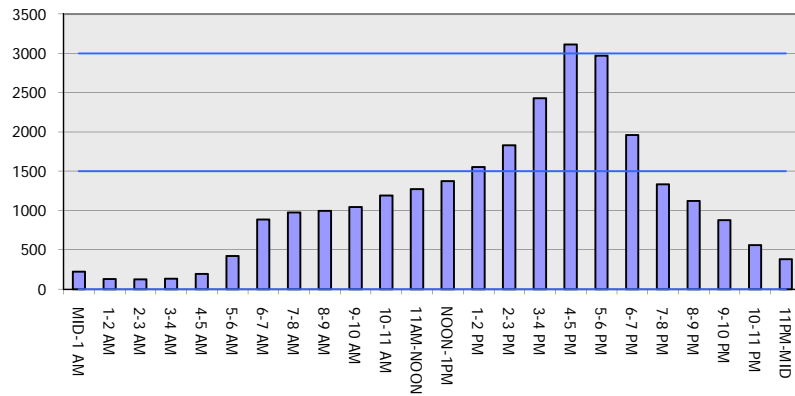
Analyzed for 2009  
Construction Season

**GRAPHICAL REPRESENTATION OF TRAFFIC MODEL INPUT AND OUTPUT**

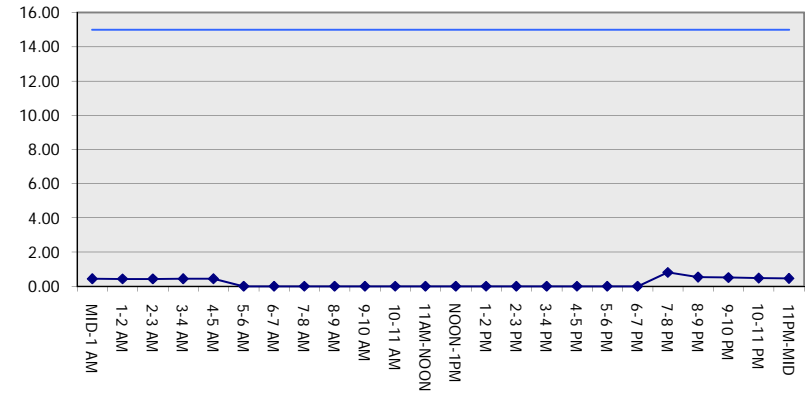
**MON-THUR**

**NORTHBOUND DIRECTION**

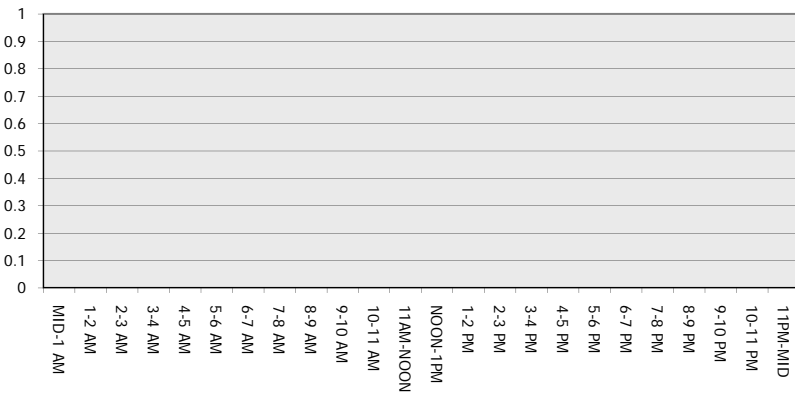
**Main Route - Traffic Demand (Vehicles Per Hour)**



**Main Route Average Delay Per Vehicle (Minutes)**



**Main Route - Average Queue Length (Vehicles)**



**Main Route - Average Speed (MPH)**

