

USH 41: CTH M TO IH 43 (BROWN COUNTY) NIGHTTIME CLOSURE NO DIVERSION ROUTE (MAX QUEUE METHOD)	MAY
	Analyzed for 2009 Construction Season

SUMMARY OF TRAFFIC MODEL OUTPUT

MON-THUR SOUTHBOUND DIRECTION

TIME OF DAY	FLOWS AND CAPACITY IN VEH/HR						AVERAGE SPEEDS IN MPH			
	MAIN ROUTE		SITE CAPA CITY	FLOW		AV.DEL PER VEH (MINS)	AVERAGE QUEUE (VEH)	MAIN ROUTE		SITE
	DEMAND FLOW	PCT HEAVY		MAIN ROUTE	'DIVER TED'			WITHOUT WORK ZONE	WITH WORK ZONE	
MID-1 AM	81	0.0	1500	81	0	0.43	0	66.3	54.5	45.1
1-2 AM	64	0.0	1500	64	0	0.43	0	66.3	54.5	45.2
2-3 AM	109	0.0	1500	109	0	0.43	0	66.2	54.4	45.0
3-4 AM	148	0.0	1500	148	0	0.44	0	66.1	54.2	44.9
4-5 AM	551	0.0	1500	551	0	0.48	0	65.3	52.9	43.3
5-6 AM	1580	0.0	OFF	1580	0	0.00	0	63.5	63.5	63.5
6-7 AM	2755	0.0	OFF	2755	0	0.00	0	58.2	58.2	58.2
7-8 AM	3051	0.0	OFF	3051	0	0.00	0	55.3	55.3	55.3
8-9 AM	1867	0.0	OFF	1867	0	0.00	0	62.9	62.9	62.9
9-10 AM	1440	0.0	OFF	1440	0	0.00	0	63.7	63.7	63.7
10-11 AM	1329	0.0	OFF	1329	0	0.00	0	63.9	63.9	63.9
11AM-NOON	1217	0.0	OFF	1217	0	0.00	0	64.1	64.1	64.1
NOON-1PM	1228	0.0	OFF	1228	0	0.00	0	64.1	64.1	64.1
1-2 PM	1291	0.0	OFF	1291	0	0.00	0	64.0	64.0	64.0
2-3 PM	1310	0.0	OFF	1310	0	0.00	0	64.0	64.0	64.0
3-4 PM	1413	0.0	OFF	1413	0	0.00	0	63.8	63.8	63.8
4-5 PM	1590	0.0	OFF	1590	0	0.00	0	63.4	63.4	63.4
5-6 PM	1384	0.0	OFF	1384	0	0.00	0	63.8	63.8	63.8
6-7 PM	951	0.0	OFF	951	0	0.00	0	64.6	64.6	64.6
7-8 PM	619	0.0	1500	619	0	0.48	0	65.2	52.7	43.0
8-9 PM	509	0.0	1500	509	0	0.47	0	65.5	53.0	43.5
9-10 PM	416	0.0	1500	416	0	0.46	0	65.6	53.3	43.8
10-11 PM	285	0.0	1500	285	0	0.45	0	65.8	53.8	44.3
11PM-MID	144	0.0	1500	144	0	0.44	0	66.1	54.3	44.9

"OFF" INDICATES NO ROAD WORK (ALL LANES OPEN TO TRAFFIC)

----- SITE BREAKDOWN DELAYS -----	
BREAKDOWN DURATION (MINS)	0
RANGE OF QUEUE DELAY - MIN (VEH-H) MAX	0.0
AV BREAKDOWNS PER DAY	0.00
AV QUEUE DELAY/DAY (VEH-H)	0.0
AV TOTAL DELAY/DAY (VEH-H)	0.0

----- SITE ACCIDENT DELAYS -----	
BREAKDOWN DURATION (MINS)	0
RANGE OF QUEUE DELAY - MIN (VEH-H) MAX	0
AV BREAKDOWNS PER DAY	0
AV QUEUE DELAY/DAY (VEH-H)	0
AV TOTAL DELAY/DAY (VEH-H)	0

AVERAGE ACCIDENT NUMBERS (PIA/DAY)	
MAIN ROUTE WITHOUT WORKS	0.0089
MAIN ROUTE WITH WORKS	0.0087
'DIVERSION'	0.0000
<small>PIA: Personal Injury Accidents</small>	
IMPACTS ON ROAD USERS	
ROAD USER COSTS PER DAY	\$283
CONGESTED HOURS PER DAY*	0

*Delays Exceeding User-Specified Maximum

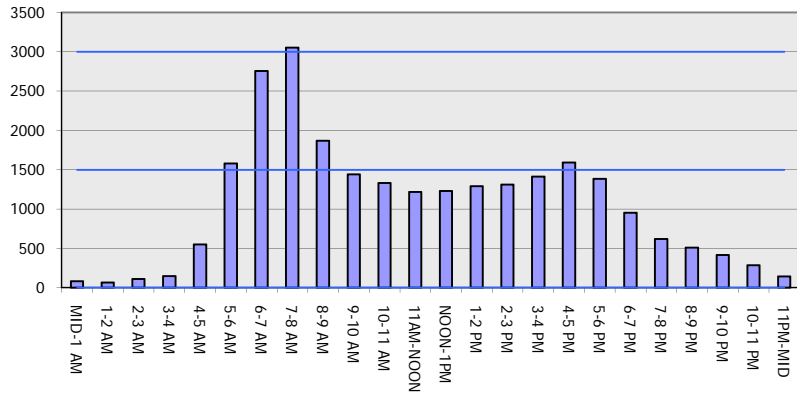
**USH 41: CTH M TO IH 43 (BROWN COUNTY)
NIGHTTIME CLOSURE
NO DIVERSION ROUTE (MAX QUEUE METHOD)**

MAY
Analyzed for 2009
Construction Season

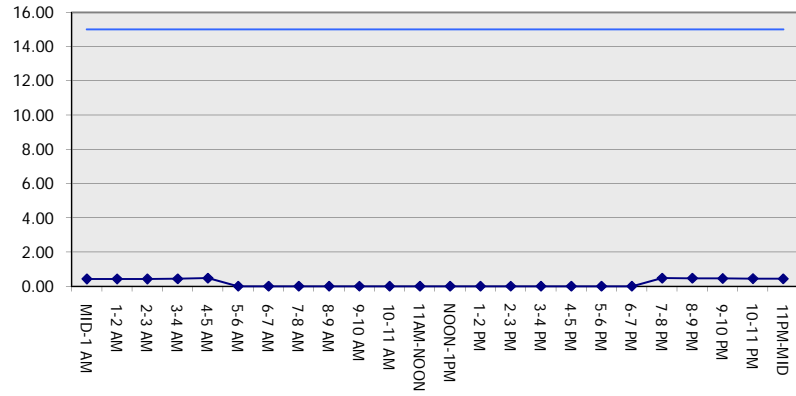
GRAPHICAL REPRESENTATION OF TRAFFIC MODEL INPUT AND OUTPUT

MON-THUR SOUTHBOUND DIRECTION

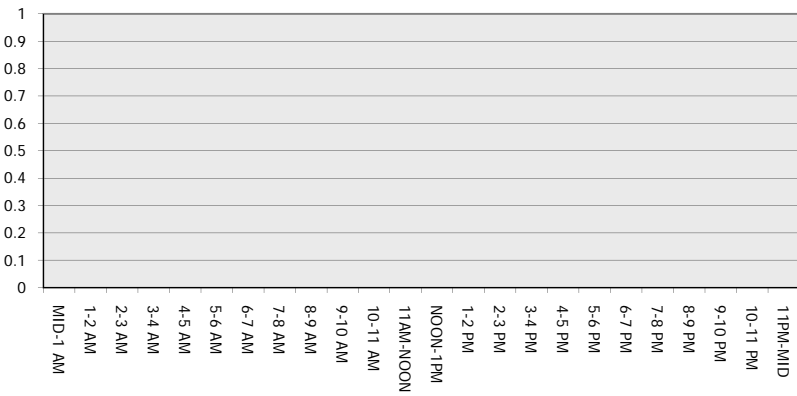
Main Route - Traffic Demand (Vehicles Per Hour)



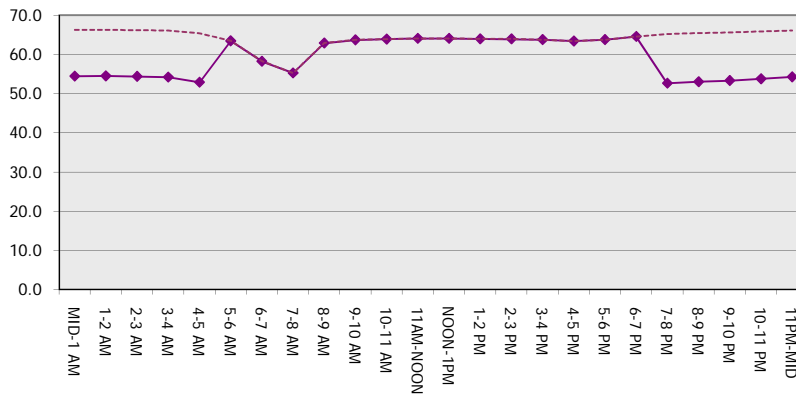
Main Route Average Delay Per Vehicle (Minutes)



Main Route - Average Queue Length (Vehicles)



Main Route - Average Speed (MPH)



USH 41: CTH M TO IH 43 (BROWN COUNTY) NIGHTTIME CLOSURE NO DIVERSION ROUTE (MAX QUEUE METHOD)	MAY
	Analyzed for 2009 Construction Season

SUMMARY OF TRAFFIC MODEL OUTPUT

MON-THUR NORTHBOUND DIRECTION

TIME OF DAY	FLOWS AND CAPACITY IN VEH/HR						AVERAGE SPEEDS IN MPH			
	MAIN ROUTE		SITE CAPA CITY	FLOW		AV.DEL PER VEH (MINS)	AVERAGE QUEUE (VEH)	MAIN ROUTE		SITE
	DEMAND FLOW	PCT HEAVY		MAIN ROUTE	'DIVER TED'			WITHOUT WORK ZONE	WITH WORK ZONE	
MID-1 AM	153	0.0	1500	153	0	0.44	0	66.1	54.2	44.9
1-2 AM	94	0.0	1500	94	0	0.43	0	66.2	54.4	45.1
2-3 AM	94	0.0	1500	94	0	0.43	0	66.2	54.4	45.1
3-4 AM	134	0.0	1500	134	0	0.44	0	66.1	54.3	45.0
4-5 AM	189	0.0	1500	189	0	0.44	0	66.0	54.1	44.7
5-6 AM	368	0.0	OFF	368	0	0.00	0	65.7	65.7	65.7
6-7 AM	863	0.0	OFF	863	0	0.00	0	64.8	64.8	64.8
7-8 AM	1000	0.0	OFF	1000	0	0.00	0	64.5	64.5	64.5
8-9 AM	934	0.0	OFF	934	0	0.00	0	64.6	64.6	64.6
9-10 AM	879	0.0	OFF	879	0	0.00	0	64.8	64.8	64.8
10-11 AM	979	0.0	OFF	979	0	0.00	0	64.6	64.6	64.6
11AM-NOON	1012	0.0	OFF	1012	0	0.00	0	64.5	64.5	64.5
NOON-1PM	1191	0.0	OFF	1191	0	0.00	0	64.1	64.1	64.1
1-2 PM	1328	0.0	OFF	1328	0	0.00	0	63.9	63.9	63.9
2-3 PM	1663	0.0	OFF	1663	0	0.00	0	63.3	63.3	63.3
3-4 PM	2357	0.0	OFF	2357	0	0.00	0	62.0	62.0	62.0
4-5 PM	2969	0.0	OFF	2969	0	0.00	0	56.1	56.1	56.1
5-6 PM	2803	0.0	OFF	2803	0	0.00	0	57.8	57.8	57.8
6-7 PM	1819	0.0	OFF	1819	0	0.00	0	63.0	63.0	63.0
7-8 PM	1260	0.0	1500	1260	0	0.71	0	64.0	47.6	36.6
8-9 PM	1011	0.0	1500	1011	0	0.52	0	64.5	51.4	41.7
9-10 PM	811	0.0	1500	811	0	0.50	0	64.9	52.0	42.4
10-11 PM	468	0.0	1500	468	0	0.47	0	65.5	53.2	43.7
11PM-MID	339	0.0	1500	339	0	0.46	0	65.8	53.6	44.2

"OFF" INDICATES NO ROAD WORK (ALL LANES OPEN TO TRAFFIC)

----- SITE BREAKDOWN DELAYS -----	
BREAKDOWN DURATION (MINS)	0
RANGE OF QUEUE DELAY - MIN (VEH-H) MAX	0.0
AV BREAKDOWNS PER DAY	0.00
AV QUEUE DELAY/DAY (VEH-H)	0.0
AV TOTAL DELAY/DAY (VEH-H)	0.0

----- SITE ACCIDENT DELAYS -----	
BREAKDOWN DURATION (MINS)	0
RANGE OF QUEUE DELAY - MIN (VEH-H) MAX	0
AV BREAKDOWNS PER DAY	0
AV QUEUE DELAY/DAY (VEH-H)	0
AV TOTAL DELAY/DAY (VEH-H)	0

AVERAGE ACCIDENT NUMBERS (PIA/DAY)	
MAIN ROUTE WITHOUT WORKS	0.0087
MAIN ROUTE WITH WORKS	0.0084
'DIVERSION'	0.0000

PIA: Personal Injury Accidents

ECONOMIC IMPACT ON ROAD USERS	
ROAD USER COSTS PER DAY	\$519
CONGESTED HOURS PER DAY*	0

*Delays Exceeding User-Specified Maximum

**USH 41: CTH M TO IH 43 (BROWN COUNTY)
NIGHTTIME CLOSURE
NO DIVERSION ROUTE (MAX QUEUE METHOD)**

MAY
Analyzed for 2009
Construction Season

GRAPHICAL REPRESENTATION OF TRAFFIC MODEL INPUT AND OUTPUT
MON-THUR NORTHBOUND DIRECTION

