

<b>USH 41: CTH AAA TO CTH G (BROWN COUNTY)                  NIGHTTIME CLOSURE                  NO DIVERSION ROUTE (MAX QUEUE METHOD)</b>	<b>OCTOBER</b>
	Analyzed for 2009 Construction Season

**SUMMARY OF TRAFFIC MODEL OUTPUT**

SUNDAY SOUTHBOUND DIRECTION

TIME OF DAY	FLOWS AND CAPACITY IN VEH/HR						AVERAGE SPEEDS IN MPH			
	MAIN ROUTE		SITE CAPA CITY	FLOW		AV.DEL PER VEH (MINS)	AVERAGE QUEUE (VEH)	MAIN ROUTE		SITE
	DEMAND FLOW	PCT HEAVY		MAIN ROUTE	'DIVER TED'			WITHOUT WORK ZONE	WITH WORK ZONE	
MID-1 AM	482	0.0	1500	482	0	0.47	0	65.5	46.9	43.6
1-2 AM	305	0.0	1500	305	0	0.45	0	65.8	47.6	44.3
2-3 AM	294	0.0	1500	294	0	0.45	0	65.8	47.7	44.3
3-4 AM	190	0.0	1500	190	0	0.44	0	66.0	48.1	44.7
4-5 AM	162	0.0	1500	162	0	0.44	0	66.1	48.2	44.8
5-6 AM	208	0.0	1500	208	0	0.44	0	66.0	48.0	44.6
6-7 AM	333	0.0	1500	333	0	0.45	0	65.8	47.5	44.2
7-8 AM	406	0.0	1500	406	0	0.46	0	65.6	47.3	43.8
8-9 AM	724	0.0	1500	724	0	0.49	0	65.0	46.1	42.7
9-10 AM	1109	0.0	OFF	1109	0	0.00	0	64.3	64.3	64.3
10-11 AM	1637	0.0	OFF	1637	0	0.00	0	63.3	63.3	63.3
11AM-NOON	1894	0.0	OFF	1894	0	0.00	0	62.8	62.8	62.8
NOON-1PM	2076	0.0	OFF	2076	0	0.00	0	62.5	62.5	62.5
1-2 PM	2131	0.0	OFF	2131	0	0.00	0	62.4	62.4	62.4
2-3 PM	2251	0.0	OFF	2251	0	0.00	0	62.2	62.2	62.2
3-4 PM	2572	0.0	OFF	2572	0	0.00	0	60.2	60.2	60.2
4-5 PM	2445	0.0	OFF	2445	0	0.00	0	61.5	61.5	61.5
5-6 PM	2249	0.0	OFF	2249	0	0.00	0	62.2	62.2	62.2
6-7 PM	1695	0.0	OFF	1695	0	0.00	0	63.2	63.2	63.2
7-8 PM	1250	0.0	1500	1250	0	0.70	0	64.1	40.6	36.9
8-9 PM	909	0.0	1500	909	0	0.51	0	64.7	45.5	42.0
9-10 PM	675	0.0	1500	675	0	0.49	0	65.1	46.3	42.8
10-11 PM	670	0.0	1500	670	0	0.49	0	65.1	46.3	42.8
11PM-MID	1265	0.0	1500	1265	0	0.72	0	64.0	40.2	36.5

"OFF" INDICATES NO ROAD WORK (ALL LANES OPEN TO TRAFFIC)

*----- SITE BREAKDOWN DELAYS -----*	
BREAKDOWN DURATION (MINS)	0
RANGE OF QUEUE DELAY - MIN (VEH-H) MAX	0.0
AV BREAKDOWNS PER DAY	0.00
AV QUEUE DELAY/DAY (VEH-H)	0.0
AV TOTAL DELAY/DAY (VEH-H)	0.0

*----- SITE ACCIDENT DELAYS -----*	
BREAKDOWN DURATION (MINS)	0
RANGE OF QUEUE DELAY - MIN (VEH-H) MAX	0
AV BREAKDOWNS PER DAY	0
AV QUEUE DELAY/DAY (VEH-H)	0
AV TOTAL DELAY/DAY (VEH-H)	0

AVERAGE ACCIDENT NUMBERS (PIA/DAY)	
MAIN ROUTE WITHOUT WORKS	0.0058
MAIN ROUTE WITH WORKS	0.0053
'DIVERSION'	0.0000
PIA: Personal Injury Accidents	
IMPACTS ON ROAD USERS	
ROAD USER COSTS PER DAY	\$1,027
CONGESTED HOURS PER DAY*	0

\*Delays Exceeding User-Specified Maximum

**USH 41: CTH AAA TO CTH G (BROWN COUNTY)  
NIGHTTIME CLOSURE  
NO DIVERSION ROUTE (MAX QUEUE METHOD)**

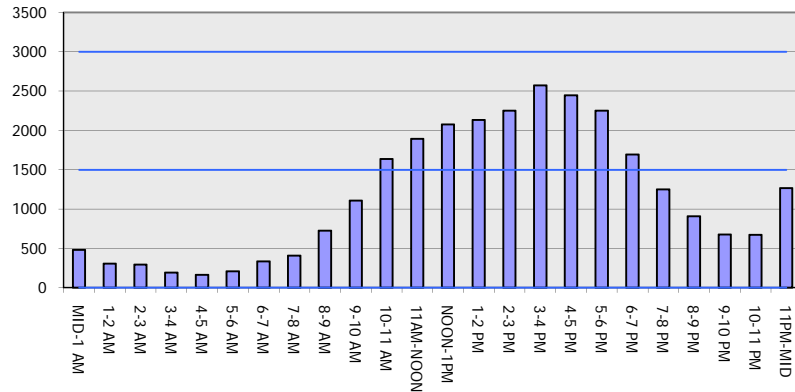
**OCTOBER**

Analyzed for 2009  
Construction Season

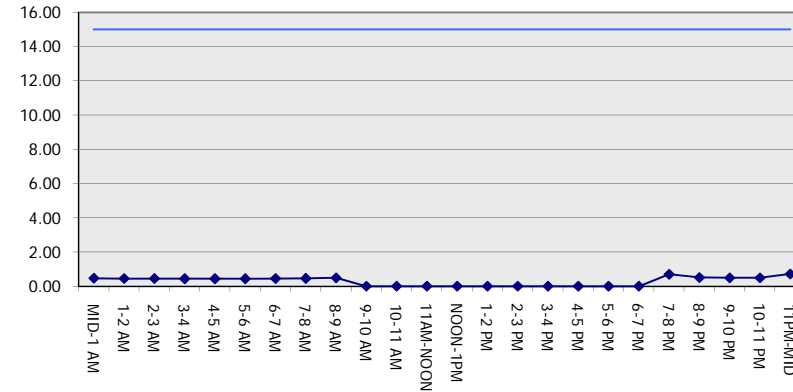
**GRAPHICAL REPRESENTATION OF TRAFFIC MODEL INPUT AND OUTPUT**

**SUNDAY SOUTHBOUND DIRECTION**

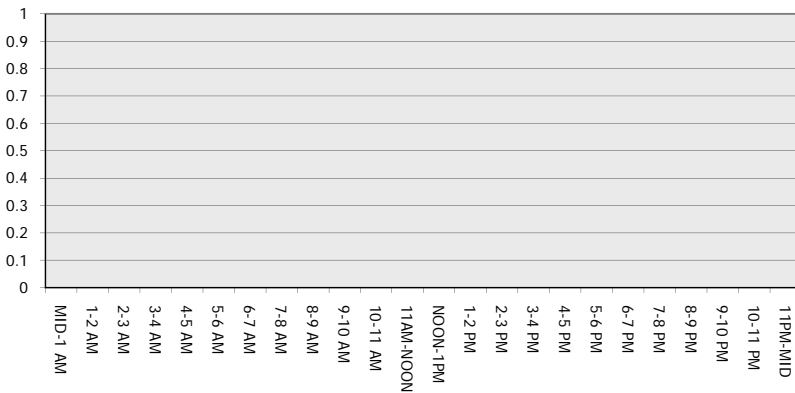
**Main Route - Traffic Demand (Vehicles Per Hour)**



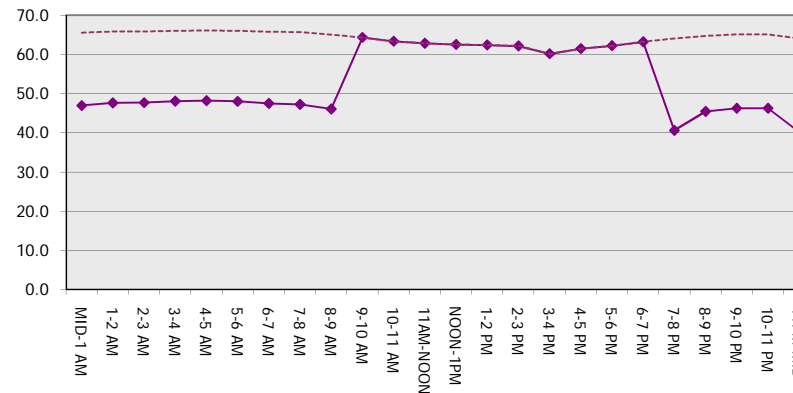
**Main Route Average Delay Per Vehicle (Minutes)**



**Main Route - Average Queue Length (Vehicles)**



**Main Route - Average Speed (MPH)**



<b>USH 41: CTH AAA TO CTH G (BROWN COUNTY)                  NIGHTTIME CLOSURE                  NO DIVERSION ROUTE (MAX QUEUE METHOD)</b>	<b>OCTOBER</b>
	Analyzed for 2009 Construction Season

**SUMMARY OF TRAFFIC MODEL OUTPUT**

SUNDAY NORTHBOUND DIRECTION

TIME OF DAY	FLOWS AND CAPACITY IN VEH/HR						AVERAGE SPEEDS IN MPH			
	MAIN ROUTE		SITE CAPA CITY	FLOW		AV.DEL PER VEH (MINS)	AVERAGE QUEUE (VEH)	MAIN ROUTE		SITE
	DEMAND FLOW	PCT HEAVY		MAIN ROUTE	'DIVER TED'			WITHOUT WORK ZONE	WITH WORK ZONE	
MID-1 AM	331	0.0	1500	331	0	0.45	0	65.8	47.5	44.2
1-2 AM	198	0.0	1500	198	0	0.44	0	66.0	48.0	44.7
2-3 AM	212	0.0	1500	212	0	0.44	0	66.0	48.0	44.6
3-4 AM	154	0.0	1500	154	0	0.44	0	66.1	48.2	44.9
4-5 AM	127	0.0	1500	127	0	0.43	0	66.1	48.3	45.0
5-6 AM	244	0.0	1500	244	0	0.45	0	66.0	47.9	44.5
6-7 AM	340	0.0	1500	340	0	0.46	0	65.8	47.5	44.2
7-8 AM	606	0.0	1500	606	0	0.48	0	65.3	46.5	43.1
8-9 AM	1152	0.0	1499	1152	0	0.63	0	64.2	42.2	38.6
9-10 AM	1768	0.0	OFF	1768	0	0.00	0	63.1	63.1	63.1
10-11 AM	1967	0.0	OFF	1967	0	0.00	0	62.7	62.7	62.7
11AM-NOON	1846	0.0	OFF	1846	0	0.00	0	63.0	63.0	63.0
NOON-1PM	1644	0.0	OFF	1644	0	0.00	0	63.3	63.3	63.3
1-2 PM	1678	0.0	OFF	1678	0	0.00	0	63.3	63.3	63.3
2-3 PM	1881	0.0	OFF	1881	0	0.00	0	62.9	62.9	62.9
3-4 PM	2095	0.0	OFF	2095	0	0.00	0	62.5	62.5	62.5
4-5 PM	2138	0.0	OFF	2138	0	0.00	0	62.4	62.4	62.4
5-6 PM	1780	0.0	OFF	1780	0	0.00	0	63.1	63.1	63.1
6-7 PM	1411	0.0	OFF	1411	0	0.00	0	63.8	63.8	63.8
7-8 PM	1041	0.0	1500	1041	0	0.52	0	64.5	45.0	41.5
8-9 PM	760	0.0	1500	760	0	0.50	0	65.0	46.0	42.5
9-10 PM	504	0.0	1500	504	0	0.47	0	65.5	46.9	43.5
10-11 PM	364	0.0	1500	364	0	0.46	0	65.7	47.4	44.0
11PM-MID	261	0.0	1500	261	0	0.45	0	65.9	47.8	44.5

"OFF" INDICATES NO ROAD WORK (ALL LANES OPEN TO TRAFFIC)

*----- SITE BREAKDOWN DELAYS -----*	
BREAKDOWN DURATION (MINS)	0
RANGE OF QUEUE DELAY - MIN (VEH-H) MAX	0.0
AV BREAKDOWNS PER DAY	0.00
AV QUEUE DELAY/DAY (VEH-H)	0.0
AV TOTAL DELAY/DAY (VEH-H)	0.0

*----- SITE ACCIDENT DELAYS -----*	
BREAKDOWN DURATION (MINS)	0
RANGE OF QUEUE DELAY - MIN (VEH-H) MAX	0
AV BREAKDOWNS PER DAY	0
AV QUEUE DELAY/DAY (VEH-H)	0
AV TOTAL DELAY/DAY (VEH-H)	0

AVERAGE ACCIDENT NUMBERS (PIA/DAY)	
MAIN ROUTE WITHOUT WORKS	0.0051
MAIN ROUTE WITH WORKS	0.0046
'DIVERSION'	0.0000

PIA: Personal Injury Accidents

ECONOMIC IMPACT ON ROAD USERS	
ROAD USER COSTS PER DAY	\$752
CONGESTED HOURS PER DAY*	0

\*Delays Exceeding User-Specified Maximum

**USH 41: CTH AAA TO CTH G (BROWN COUNTY)  
NIGHTTIME CLOSURE  
NO DIVERSION ROUTE (MAX QUEUE METHOD)**

**OCTOBER**

Analyzed for 2009  
Construction Season

**GRAPHICAL REPRESENTATION OF TRAFFIC MODEL INPUT AND OUTPUT**  
**SUNDAY NORTHBOUND DIRECTION**

